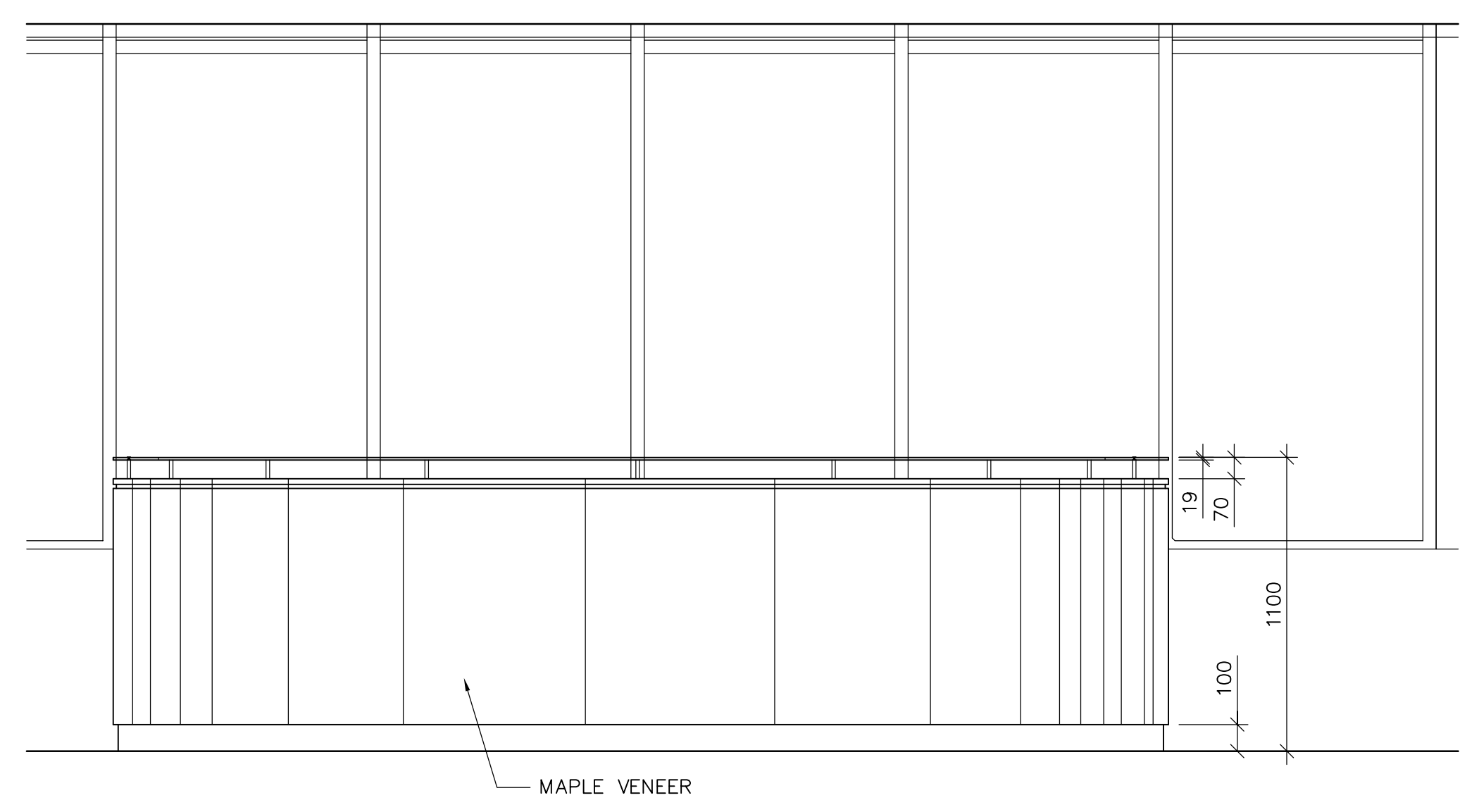
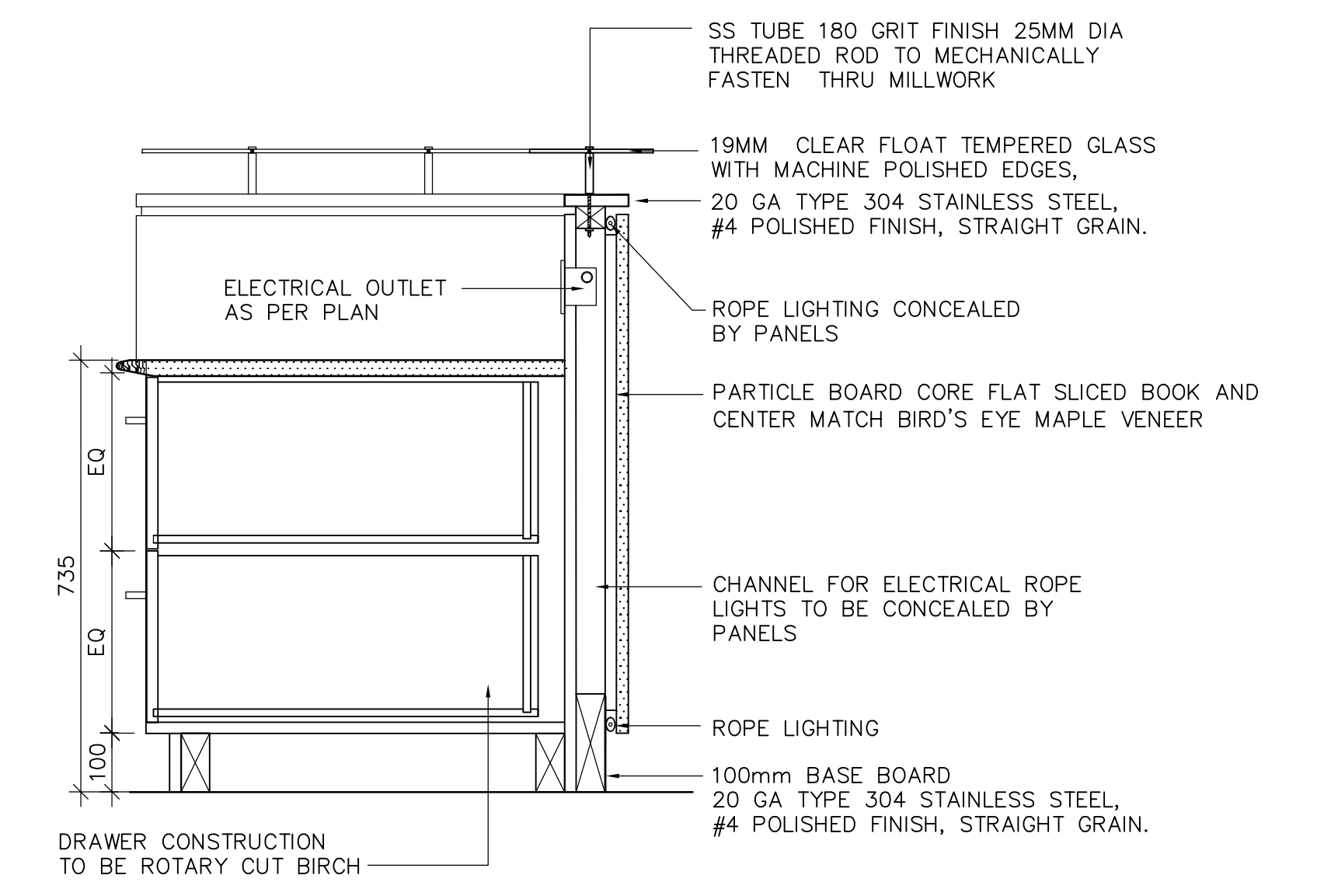


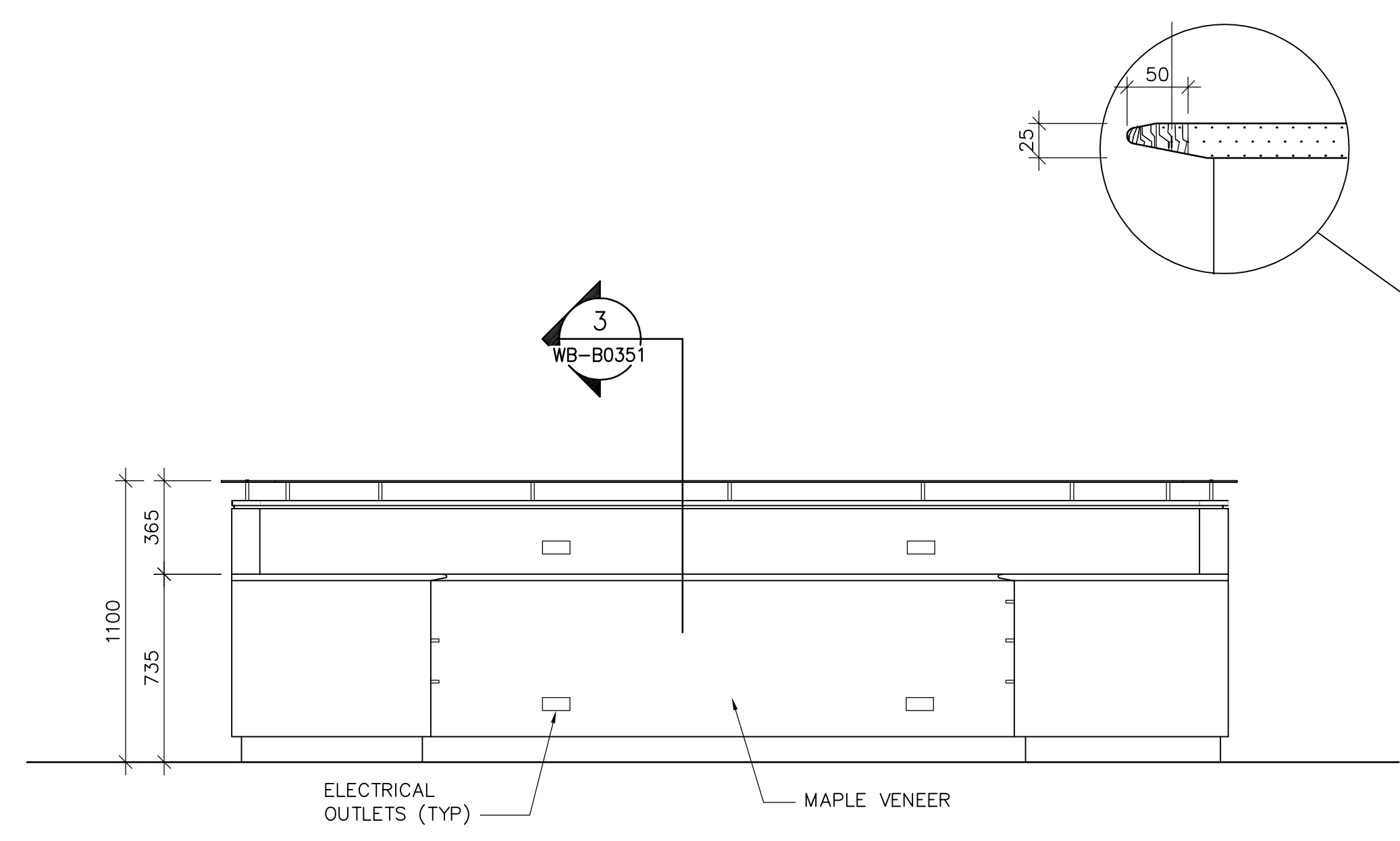
1 PARTIAL PLAN-RECEPTION DESK (SECOND FLOOR LEVEL)
WB-B0129 1 : 20



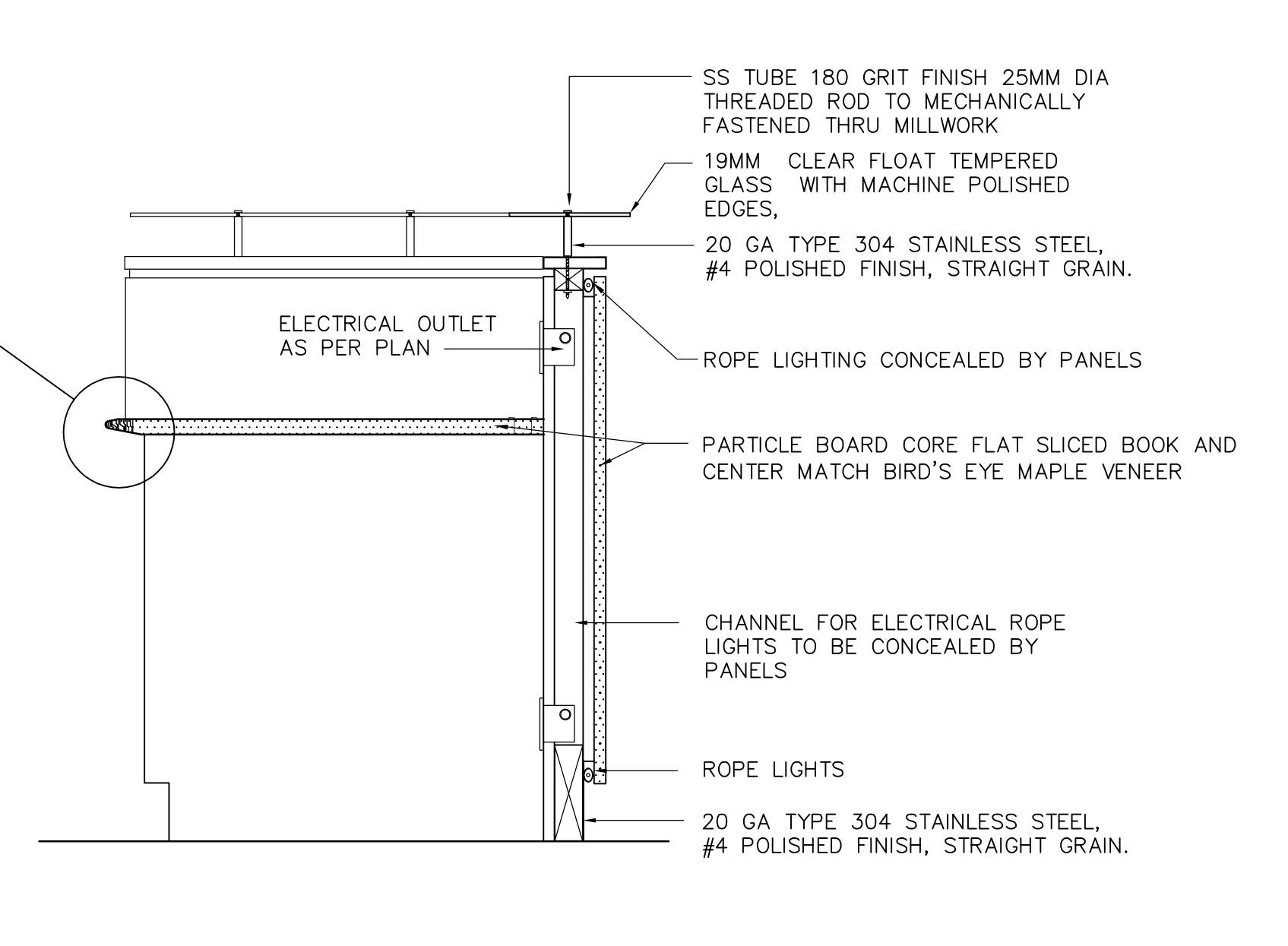
4 RECEPTION DESK ELEVATION ROOM 221
WB-B0351 1 : 20



5 RECEPTION DESK SECTION
WB-B0351 1 : 10



2 RECEPTION DESK ELEVATION
WB-B0351 1 : 20



3 RECEPTION DESK SECTION
WB-B0351 1 : 10

MILLWORK NOTES:

1. CONSTRUCTION

- A) DRAWER SIDES, BACKS, AND BOTTOMS TO BE 1/2" ROTARY CUT BIRCH
- B) ALL EXTERIOR SURFACES (INCLUDING TOPS, GABLES, BOTH SIDES OF DRAWER AND DOOR FRONTS AND SELF EDGING, ETC.) TO BE FINISHED AS NOTED FOR SPECIFIC MILLWORK.
- C) ALL SUPPORT BLOCKING WITHIN MILLWORK TO BE CONCEALED FROM VIEW.
- D) ALL CONSTRUCTION TO BE 3/4" PLYWOOD OR PARTIAL BOARD AS SPECIFIED.

2. MILLWORK HARDWARE

DRAWER GLIDES	KNAPP & VOGT 1483 (UP TO 150 LB. LOAD RATING. HEAVY DUTY FULL EXTENSION) DRAWERS OVER 6" HIGH & PRINTER SHELF DRAWERS 1248 (UP TO 50 LB. LOAD RATING, DRAWERS UNDER 6" HIGH
GROMMET	HAFELE - 429.94.212 (56MM) CHROME POL. ZINC DIE CAST
PENCIL TRAY	PENCIL TRAY TO BE PROVIDED FOR ONE BOX DRAWER IN EACH PEDESTAL.
FILE BARS	SUSPENSION FRAME HARDWARE FOR LETTER SIZE FILES FOR EACH FILE DRAWER
HINGES	HETTICK - CONCEALED HINGES, NO 790 NICKEL FINISH 170 DEGREES.

TOUCH LATCH IVES

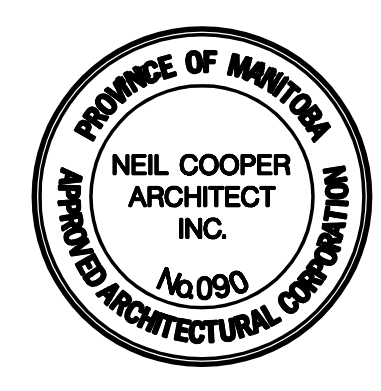
STAINLESS STEEL HANDLE	HAFELE	MODEL: 117.05.650
STAINLESS STEEL HANDLE	HAFELE	MODEL: 102.71959
METAL SHELF SUPPORT AND STANDARDS	HAFELE	MODEL: 283.12.905 SILVER ANODIZED
SHELF SUPPORT	MODEL: 283.68.907 SILVER ANODIZED	
GLIDES FOR GABLE ENDS		
GLIDES FOR GABLE ENDS IN LAB	HAFELE	MODEL: 650.194.324
		COLOR: BLACK

KEYING TO BE REVIEWED WITH CLIENT

CYLINDER MODULE SYSTEM - CENTRAL LOCKING SINGLE PEDESTAL FRONT MOUNT	MFG: HAFELE
ITEM: CYLINDER ROSETTE, 210.04.070	COLOR: MATT NICKEL
ITEM: LOCK BODY WITH LIFTING PIN	MODEL: 234.85.001
ITEM: LOCKBAR CLIP	MODEL: 234.87.998
ITEM: PROTECTIVE CAP	MODEL: 210.02.095
ITEM: LOCKBAR	MODEL: 234.87.818 (457MM)
ITEM: ARRESTING PINS	MODEL: 237.22.723
ITEM: BAR RETAINING BRACKET	MODEL: 234.87.989
ITEM: DRAWER LOCKING WEDGE	MODEL: 234.91.090

CANLYTE 8037CL/712642B 1 42WATT 120V RECESSED COMPACT FLUORESCENT LIGHT FIXTURE WITH WIDE BEAM DISTRIBUTION AND 55" CUTOFF CLEAR REFLECTOR AND WHITE TRIM RING

CONTINUES UNDER COUNTER FLUORESCENT LIGHTS MFG: HAFELE
MINI FLUORESCENT UNDER CABINET LIGHTS SURFACE MOUNTED
MODEL: 820.53.674
COLOR: GREY METAL
CONTRACTOR TO HARDWIRE FOR SWITCH



B.M. ELEV.			
DESIGNED BY	MG	CHECKED BY	BJS
DRAWN BY	MG	APPROVED BY	AHL
SCALE:	AS NOTED	RELEASED FOR CONSTRUCTION BY:	R. SOROKOWSKI
00 ISSUED FOR TENDER	07/06/05	LK	
NO. REVISIONS	DATE	BY	DATE 2005/08/05

CH2MHILL
Frederickson Cooper ARCHITECTS

EarthTech
A Tyco International Ltd. Company

DESIGNED BY MG CHECKED BY BJS
DRAWN BY MG APPROVED BY AHL
SCALE: AS NOTED RELEASED FOR CONSTRUCTION BY: R. SOROKOWSKI

DATE 2005/08/05 DATE 2007/06/05

ENGINEER'S SEAL	
ORIGINAL SIGNED BY	NEIL COOPER
	2007/06/05
CONSULTANT DRAWING NO.	WB-B0351

THE CITY OF WINNIPEG
WATER AND WASTE DEPARTMENT
ENGINEERING DIVISION

WATER TREATMENT PLANT
MAIN BUILDING
OFFICE AND PLANT INTERIOR FINISHES

ARCHITECTURAL
MILLWORK PLANS, ELEVATIONS, AND SECTIONS

CITY FILE NUMBER
SHEET OF
CITY DRAWING NUMBER
1-0601B-A-B0351-001-00D