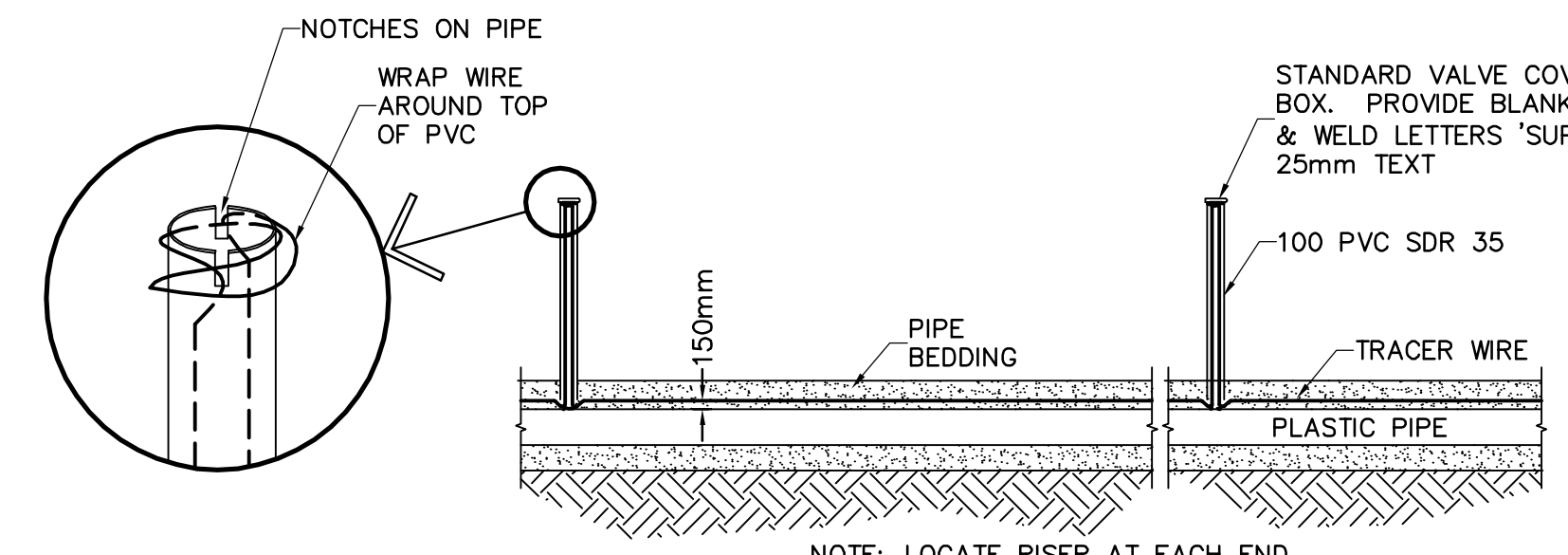


GENERAL NOTES:
 A. BASE LINE IS CENTERLINE OF 750 SUPERNATANT LINE
 B. LOCATION OF UNDERGROUND STRUCTURES AS SHOWN ARE BASED ON THE BEST INFORMATION AVAILABLE, BUT NO GUARANTEE IS GIVEN THAT ALL EXISTING UTILITIES ARE SHOWN OR THAT THE GIVEN LOCATIONS ARE EXACT. CONFIRMATION OF EXISTENCE AND EXACT LOCATION OF ALL SERVICES MUST BE OBTAINED FROM THE INDIVIDUAL UTILITIES BEFORE PROCEEDING WITH CONSTRUCTION.

BENCHMARK NOTES:
 DRAWING COORDINATES ARE UTM NAD83 - SCALE FACTOR 0.99983

| B.M. No. | NORTHING | EASTING | ELEVATION |
|----------|-------------|------------|-----------|
| PILE 136 | 5523873.734 | 647764.406 | 236.242 |
| PILE 133 | 5523256.606 | 647782.387 | 236.056 |



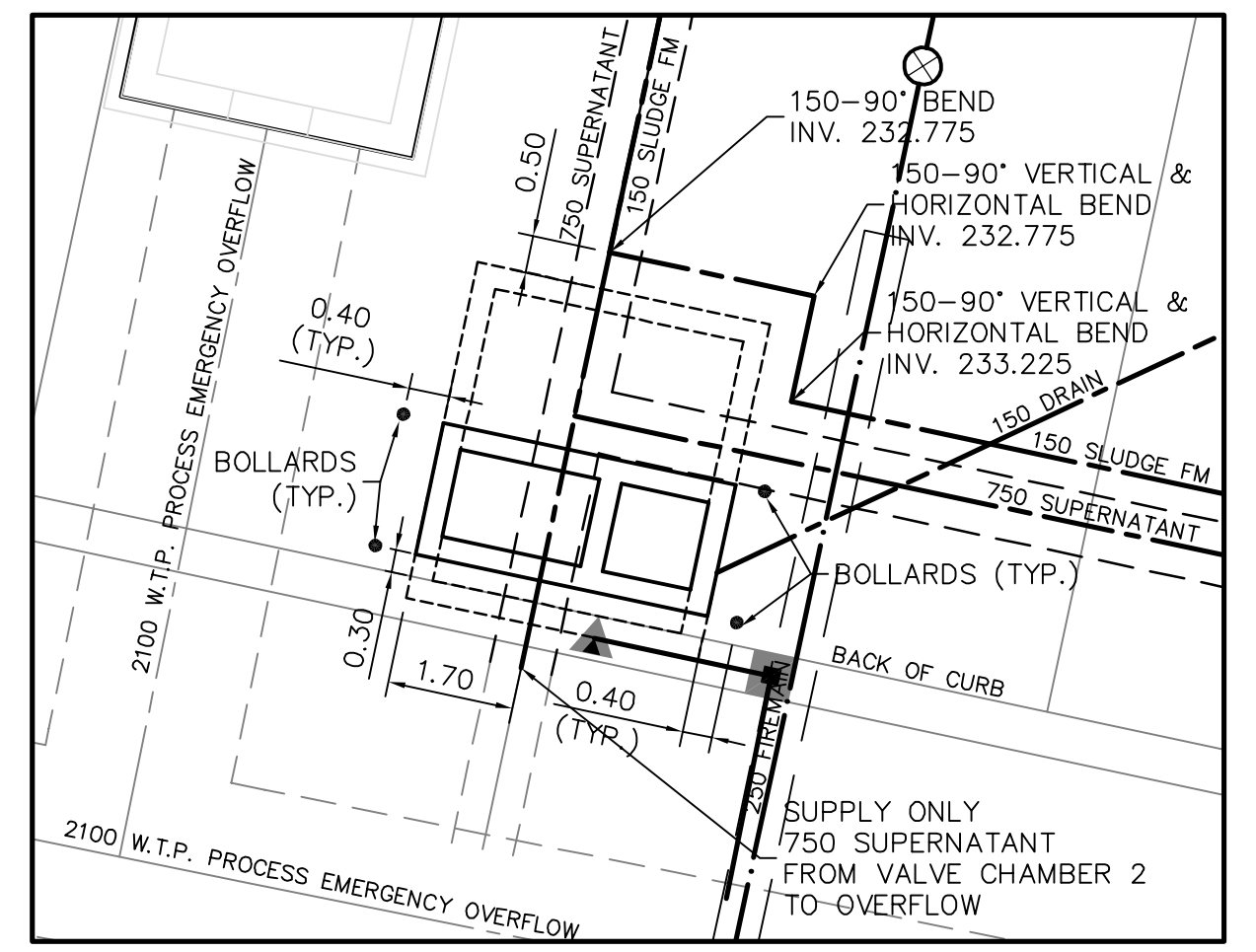
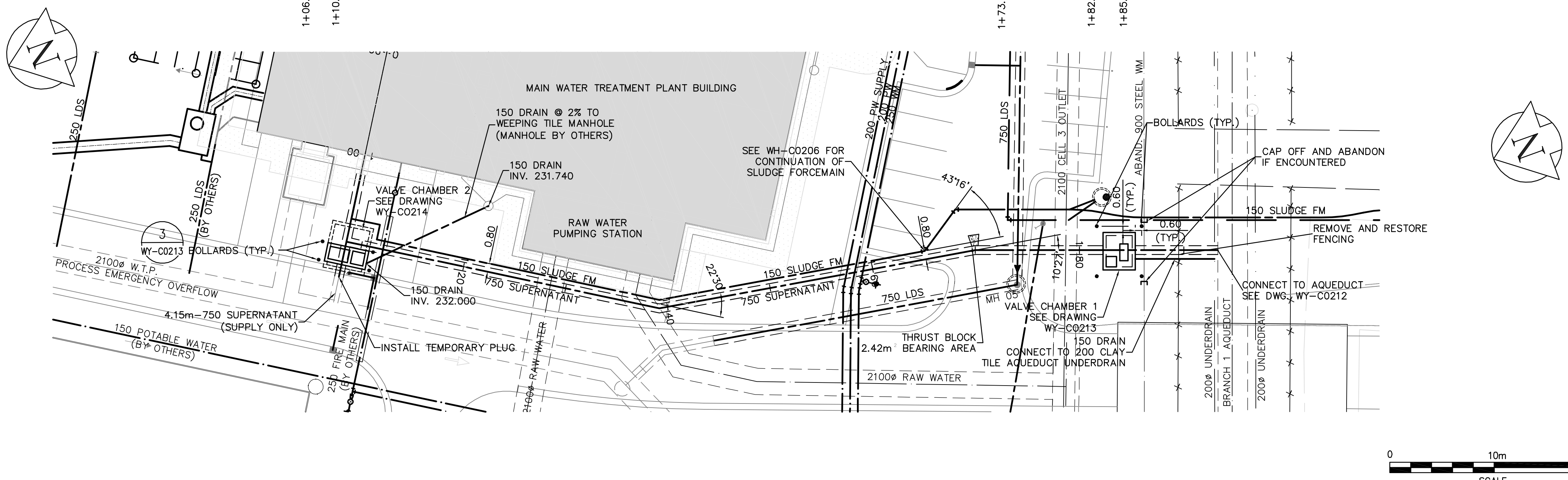
NOTE: LOCATE RISER AT EACH END OF PIPE AND AT 120m INTERVALS.
1 TRACER WIRE DETAIL
 SCALE: NTS

COORDINATE TABLE

| DESCRIPTION | NORTHING | EASTING |
|------------------------------------|-------------|------------|
| 750 CONNECTION STA. 1+02.104 | 5524054.091 | 647844.571 |
| 750x750x750 TEE STA. 1+08.524 | 5524057.486 | 647839.124 |
| 750-22.5" BEND STA. 1+39.200 | 5524031.455 | 647822.896 |
| 750-22.5" BEND STA. 1+69.994 | 5524001.078 | 647817.846 |
| 750-22.5" VERT. BEND STA. 1+73.676 | 5523997.613 | 647816.592 |
| 750 CONNECTION STA. 1+94.635 | 5523977.905 | 647809.460 |
| 750 CONNECTION TO 2100 OVERFLOW | 5524061.189 | 647833.185 |
| 150 SLUDGE FM. 45" BEND | 5524005.652 | 647819.417 |
| CONNECTION TO AQUEDUCT | 5523979.197 | 647809.928 |

JOINT RESTRAINTS
 ALL JOINTS WITHIN THE FOLLOWING AREAS SHALL BE RESTRAINED WITH JOINTS RESTRAINT HARNESSSES

| PIPE | FROM STA. | TO STA. |
|----------------------|-----------|----------|
| 150 SLUDGE FORCEMAIN | 1+06.276 | 1+15.585 |
| | 1+37.041 | 1+41.041 |
| | 1+63.218 | 1+67.218 |
| 750 SUPERNATANT | 1+35.200 | 1+43.200 |
| | 1+65.994 | 1+82.256 |



VALVE CHAMBER 2 SITE DETAIL
 SCALE: 1:100

| 150 mm W.M. | 150 mm W.M. | HYDRO | HYDRO | LIGHT STANDARD |
|---------------------|---------------|-------------------|-------------------|-------------------|
| HYDRANT | HYDRANT | M.T.S. | M.T.S. | ANCHOR |
| VALVE | VALVE | CONCRETE | CONCRETE | POLE |
| LAND DRAINAGE SEWER | 300mm L.D.S. | ASPHALT | ASPHALT | CONTOURS |
| WASTEWATER SEWER | 250mm W.W.S. | PROPERTY LINE | PROPERTY LINE | RAIL X-ING SIGNAL |
| MANHOLE | MANHOLE | SURVEY BAR | SURVEY BAR | RAILWAY TRACK |
| CATCH BASIN | CATCH BASIN | ELEVATION | ELEVATION | DITCH |
| CURB INLET | CURB INLET | TREE | TREE | |
| JUNCTIONS | JUNCTIONS | ANODE | ANODE | |
| CULVERT | CULVERT | CONCRETE SIDEWALK | CONCRETE SIDEWALK | |
| GAS | GAS | FENCE | FENCE | |
| EXISTING | LEGEND - PLAN | PROPOSED | EXISTING | LEGEND - PLAN |
| | | | PROPOSED | |

APECA
 Certificate of Authorization
 Earth Tech Canada Inc.
 No. 730 Expiry: April 30, 2007

| B.M. ELEV. | CH2M HILL | EarthTech | ENGINEER'S SEAL |
|---|--------------------------------|---|-------------------------------------|
| | Frederickson Cooper ARCHITECTS | A Type International Ltd. Company | ORIGINAL SIGNED BY K.W. FITCHETT |
| | DESIGNED BY: GSK | CHECKED BY: KWF | 2007/01/26 |
| | DRAWN BY: JBC | APPROVED BY: AHL | CONSULTANT DRAWING NO. WY-C0211 |
| | SCALE: 1:250 HOR 1:50 VER | RELEASED FOR CONSTRUCTION BY: R. SOROKOWSKI | CITY FILE NUMBER |
| 01 ISSUED FOR TENDER (94-2007) 07/04/05 GSK | DATE: 2005/11/21 | DATE: 2006/01/26 | SHEET OF |
| 00 ISSUED FOR TENDER 07/01/26 GSK | | | CITY DRAWING NUMBER |

THE CITY OF WINNIPEG
 WATER AND WASTE DEPARTMENT
 Winnipeg ENGINEERING DIVISION

WATER TREATMENT PLANT SITE UTILITIES

CIVIL
 SUPERNATANT LINE/ 150 SLUDGE FORCEMAIN
 WTP MAIN BUILDING TO AQUEDUCT

1-06011-C-0211-001-01D