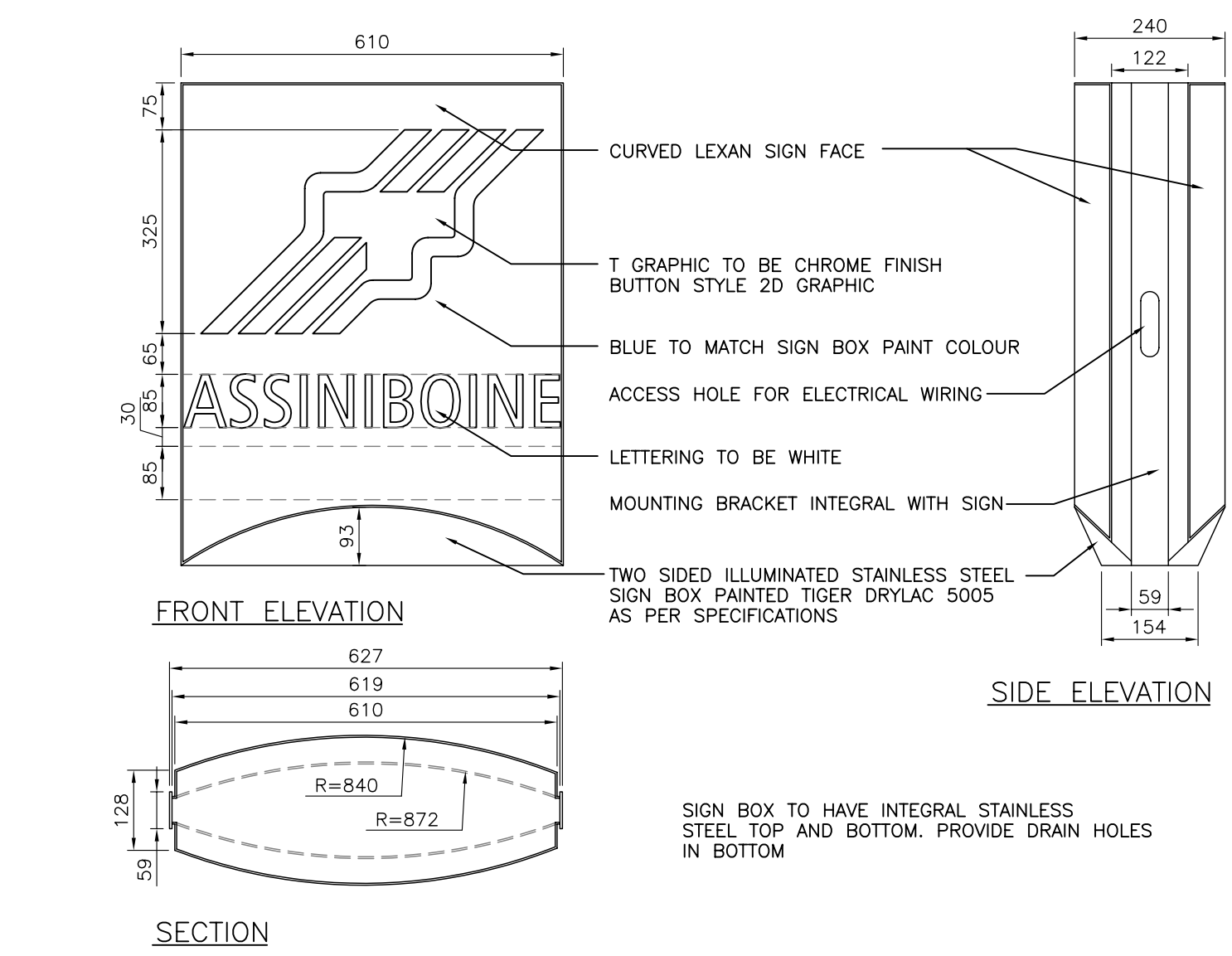


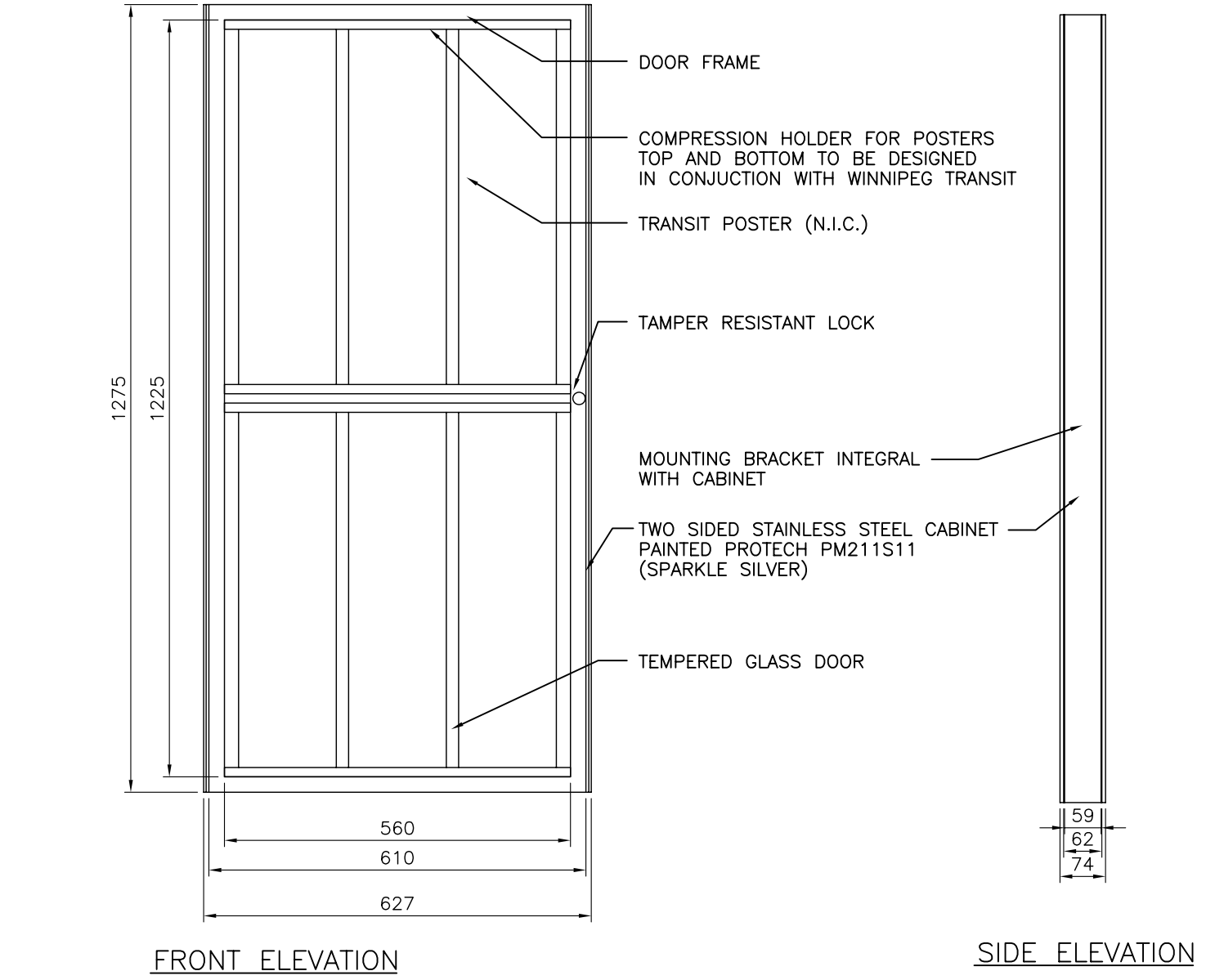
PLAN

FRONT ELEVATION

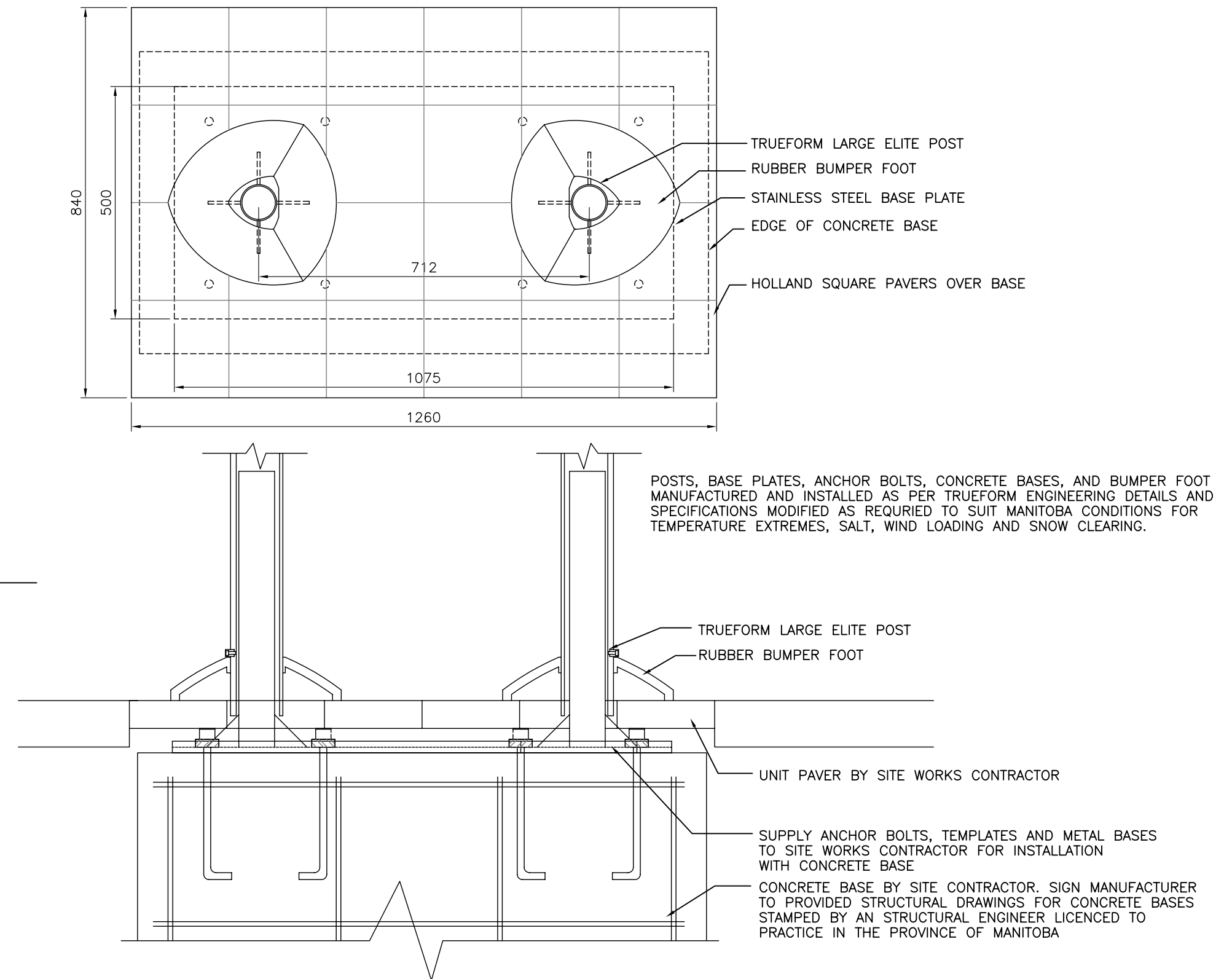
SIDE ELEVATION



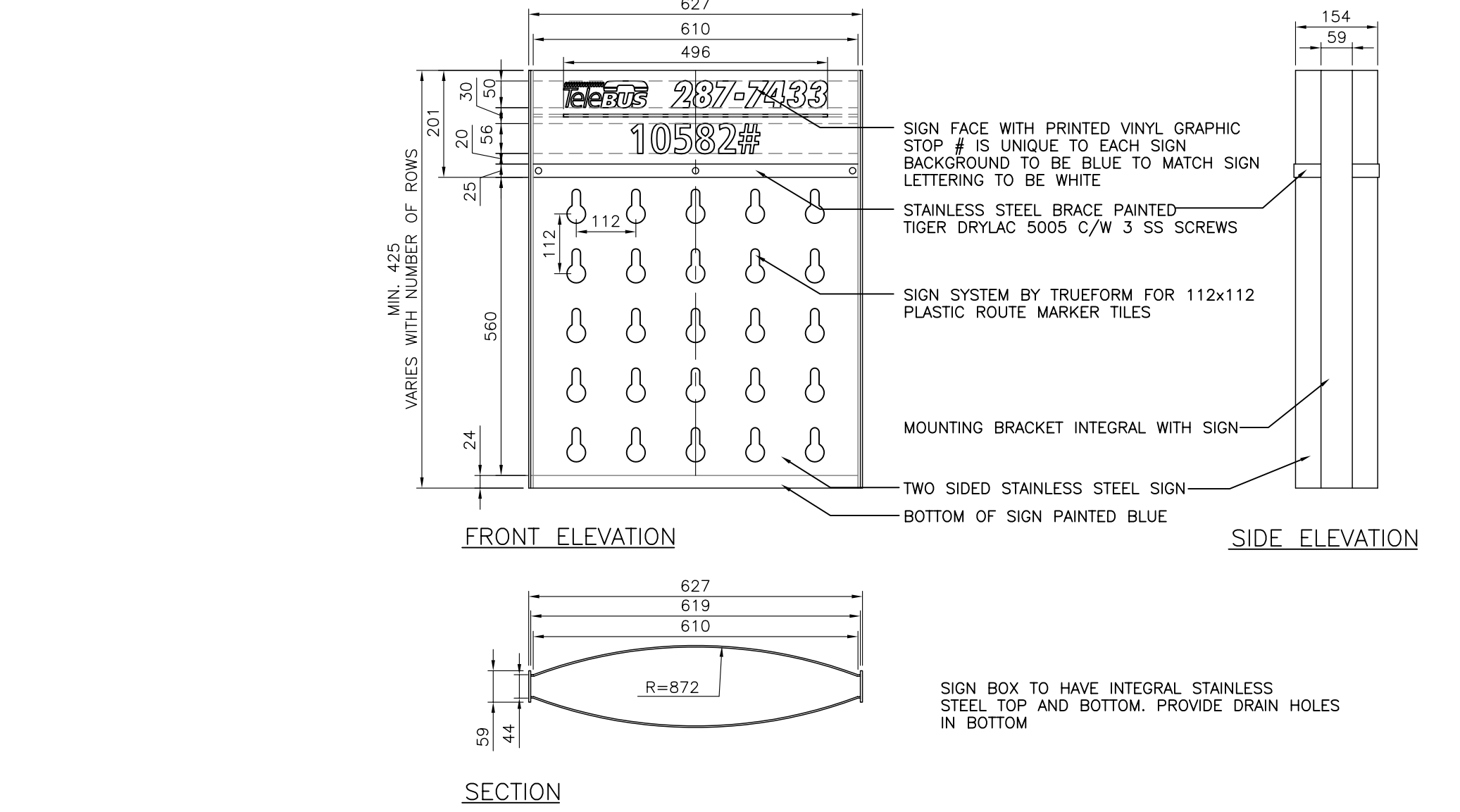
DETAIL 5 - ILLUMINATED SIGN BOX



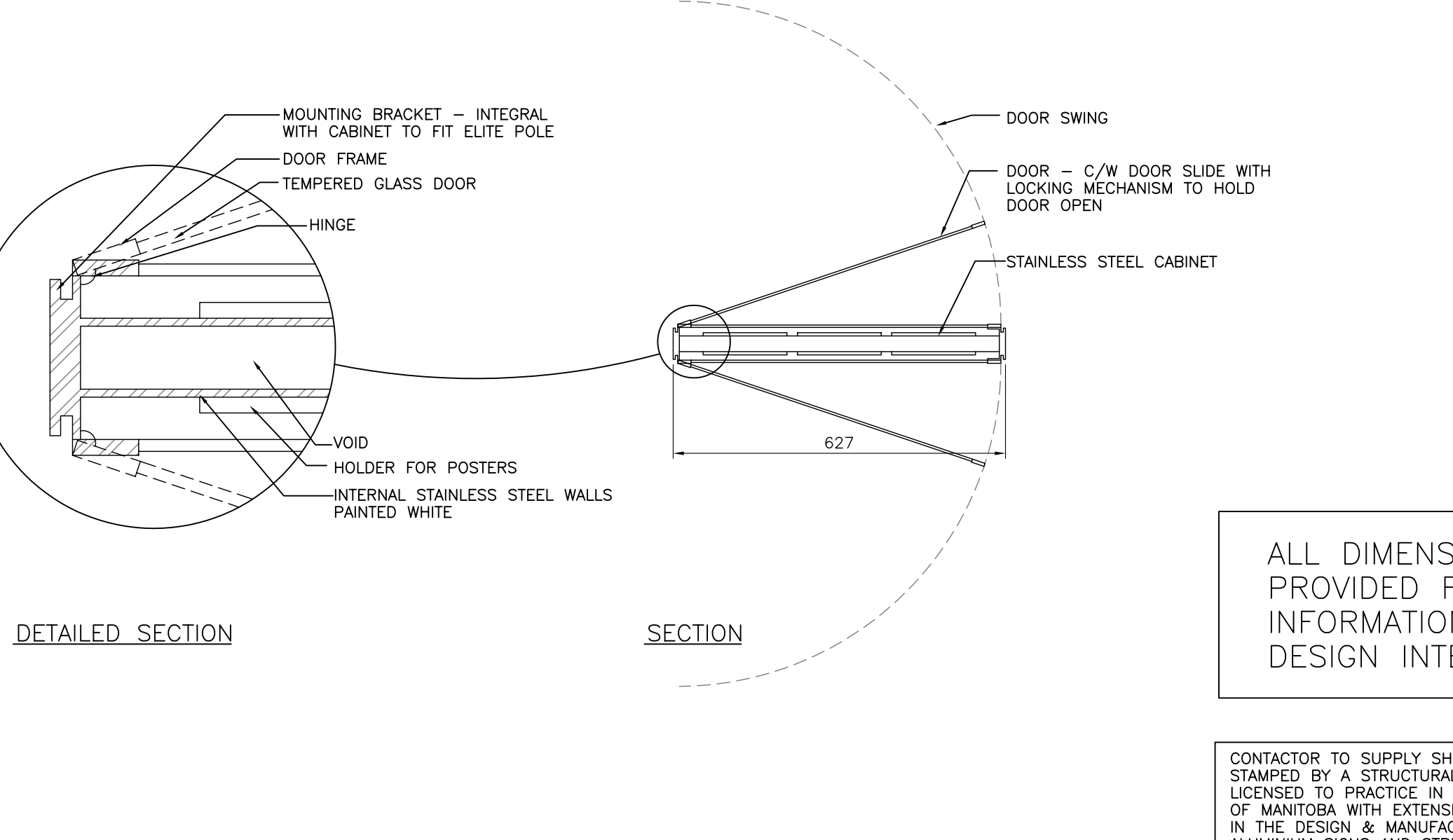
DETAIL 7 - TIP DISPLAY BOX



DETAIL 8 - BASE CONNECTION

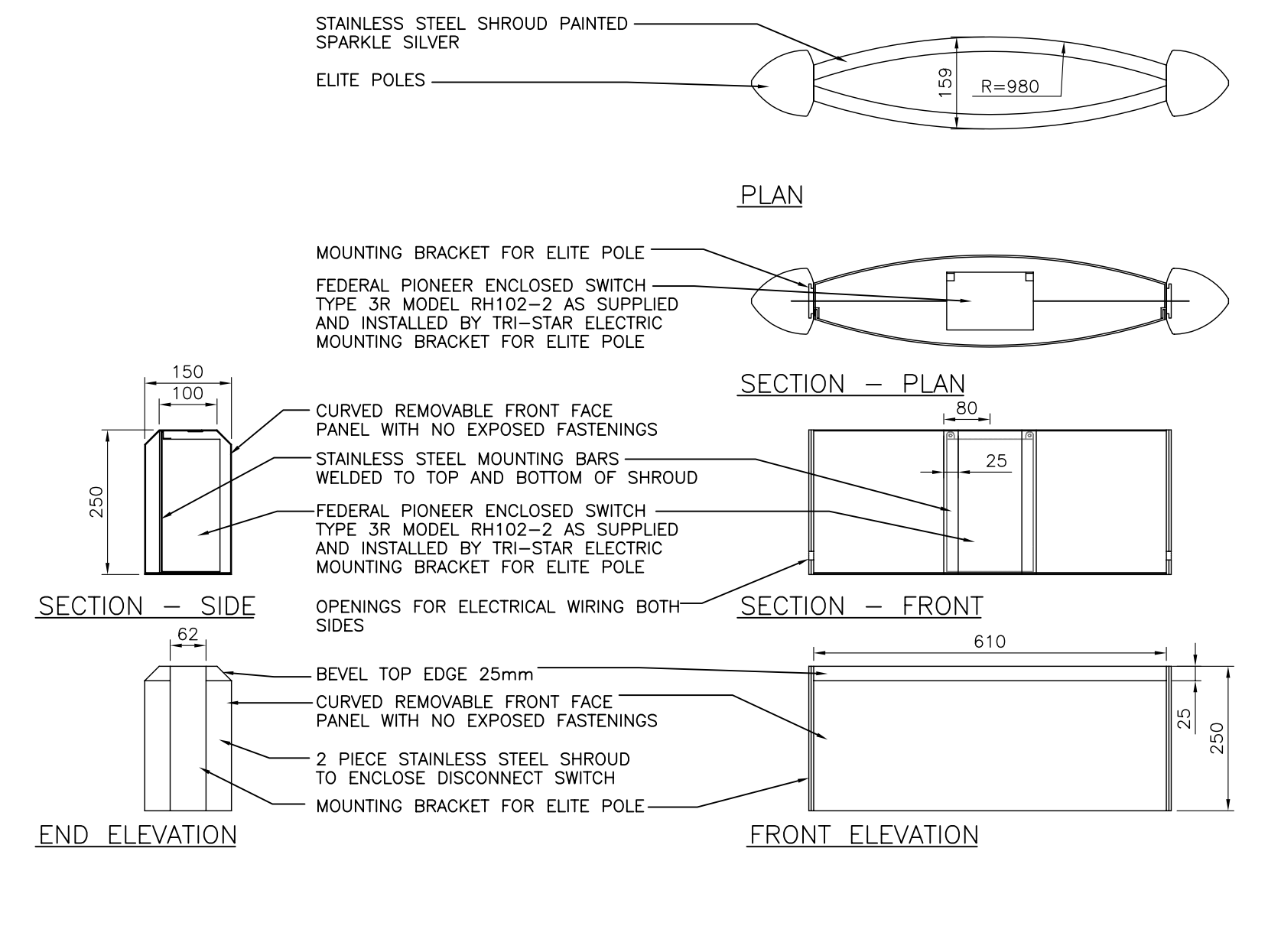


DETAIL 6 - STAINLESS STEEL SIGN



DETAILED SECTION

SECTION



DETAIL 9 - SHROUD FOR DISCONNECT

ALL DIMENSIONS PROVIDED FOR INFORMATION ON DESIGN INTENT.

CONTRACTOR TO SUPPLY SHOP DRAWINGS STAMPED BY A STRUCTURAL ENGINEER LICENSED TO PRACTICE IN THE PROVINCE OF MANITOBA WITH EXTENSIVE EXPERIENCE IN THE DESIGN & MANUFACTURING OF ALUMINUM SIGNS AND STRUCTURES FOR PUBLIC TRANSIT. SHOP DRAWINGS TO INCLUDE WALL THICKNESSES, MATERIALS ETC. AS LISTED IN THE SPECIFICATIONS.

No.	Revisions	Date	By
17-12-07	1:10		

Designed By: JW/SR
 Drawn By: JW
 Checked By: BM/AR



WINNIPEG TRANSIT
WINNIPEG TRANSIT BUS STOP SIGNAGE SYSTEM - PHASE 2