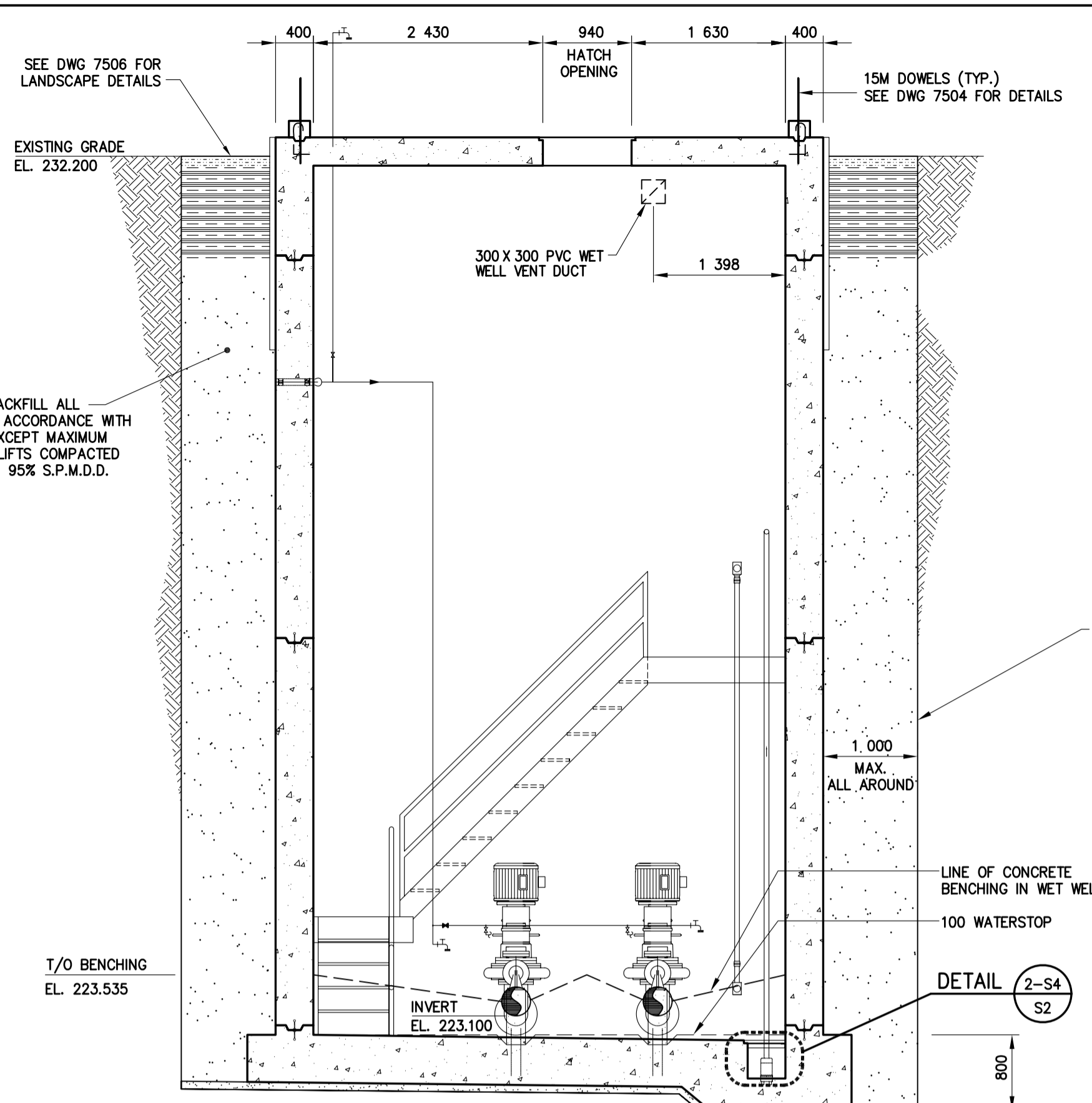
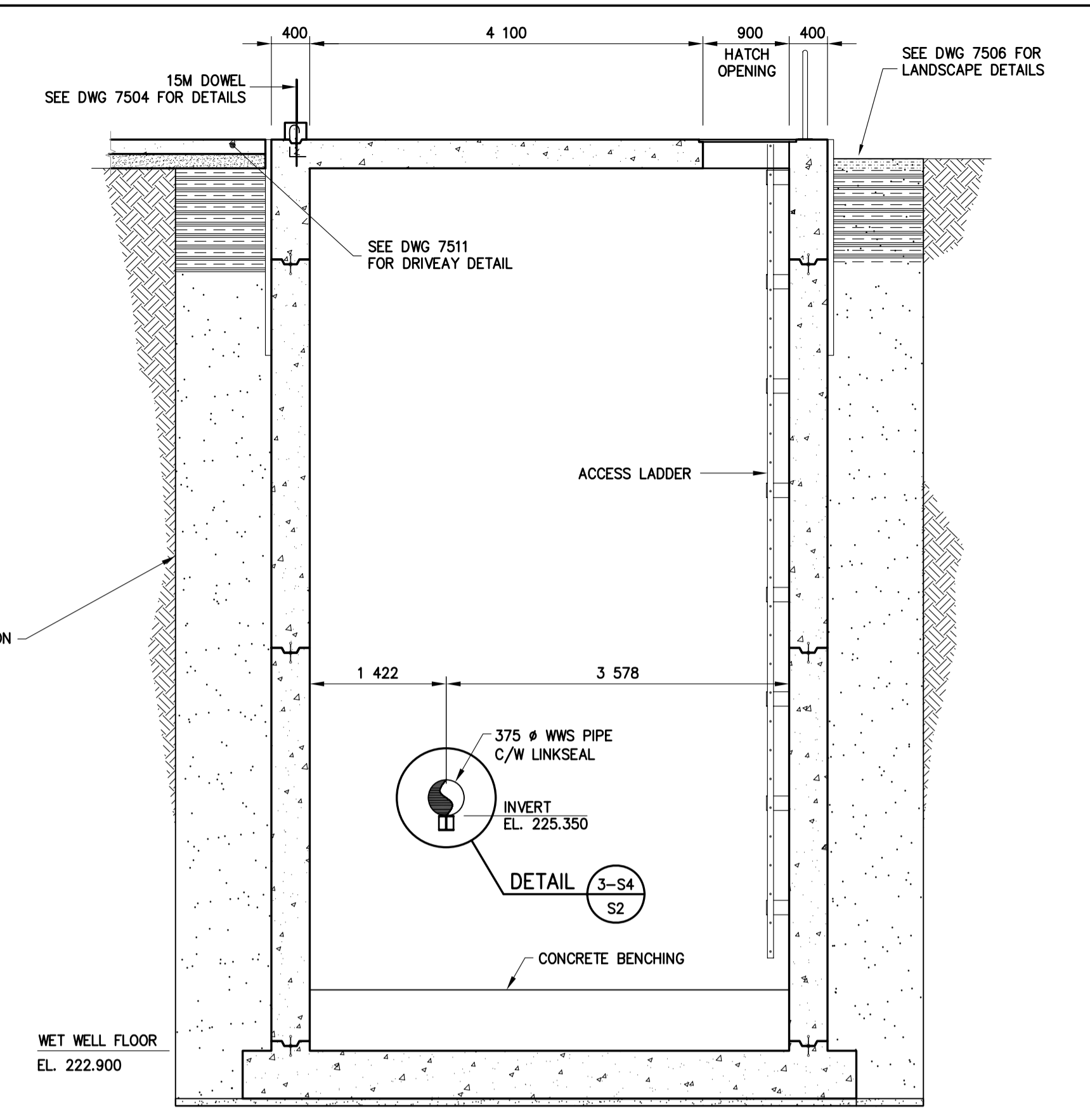


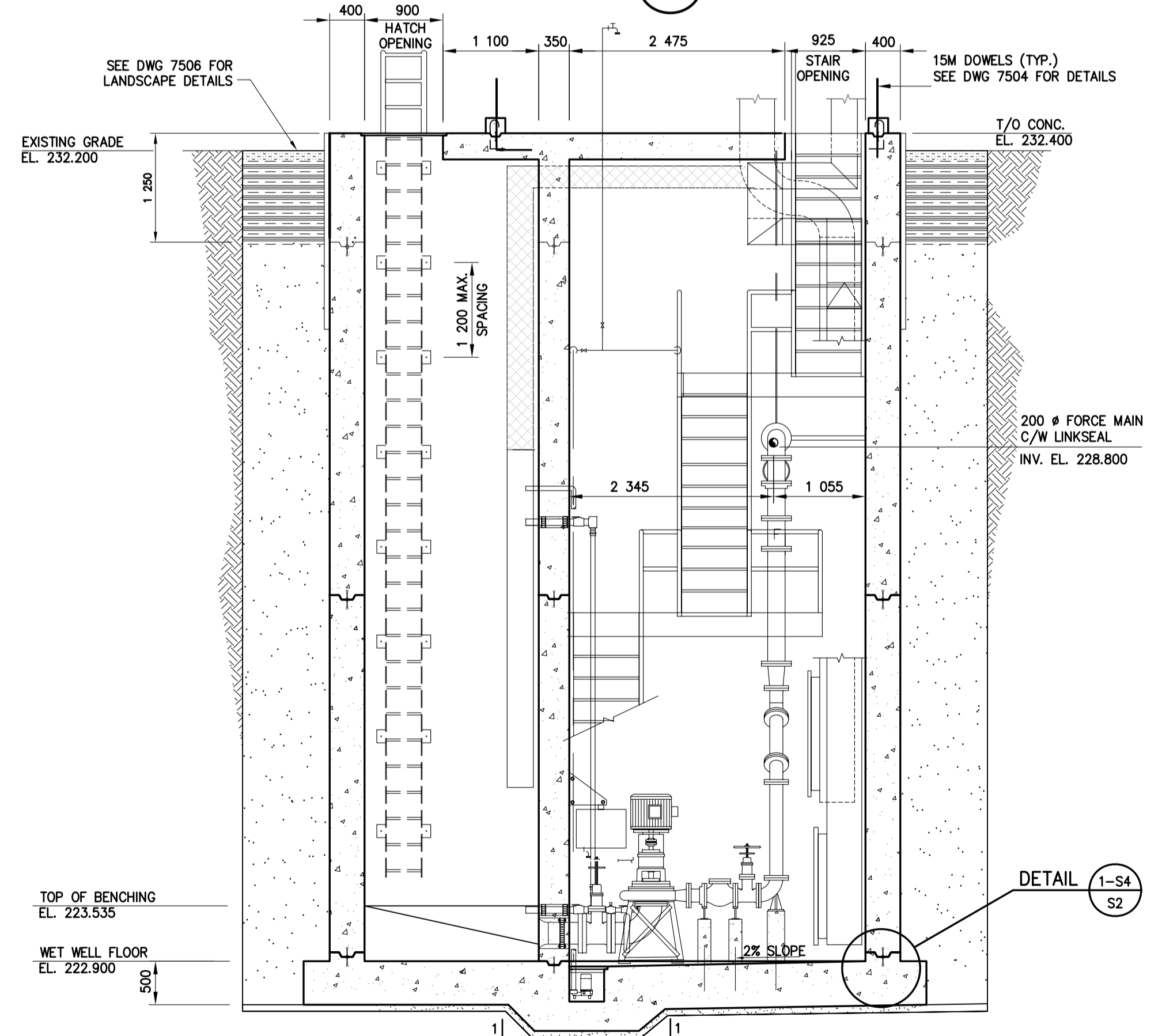
SECTION A-S1
1:50



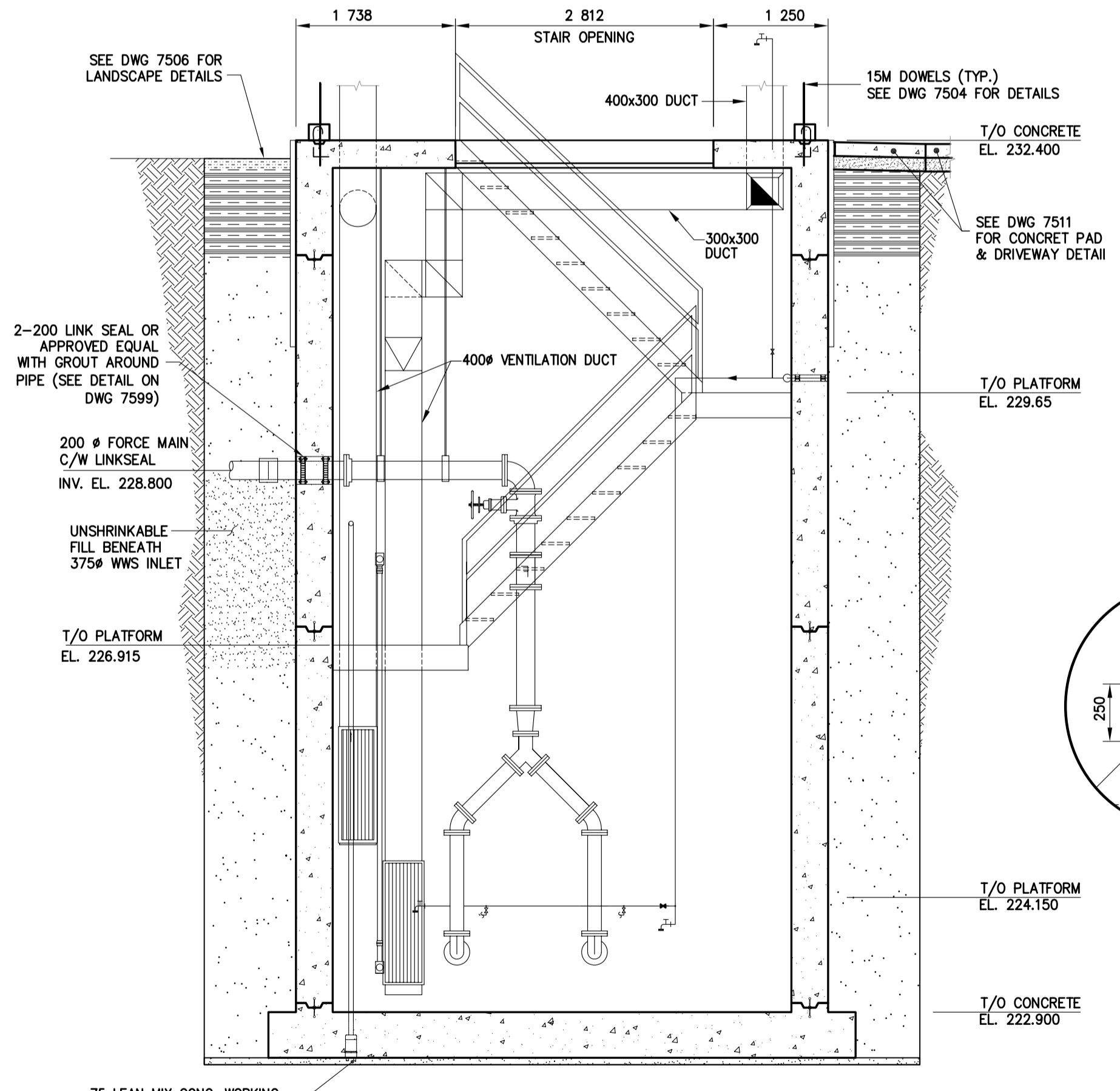
WALL BETWEEN PUMP ROOM AND WET WELL (DRY SIDE SHOWN)
1:50



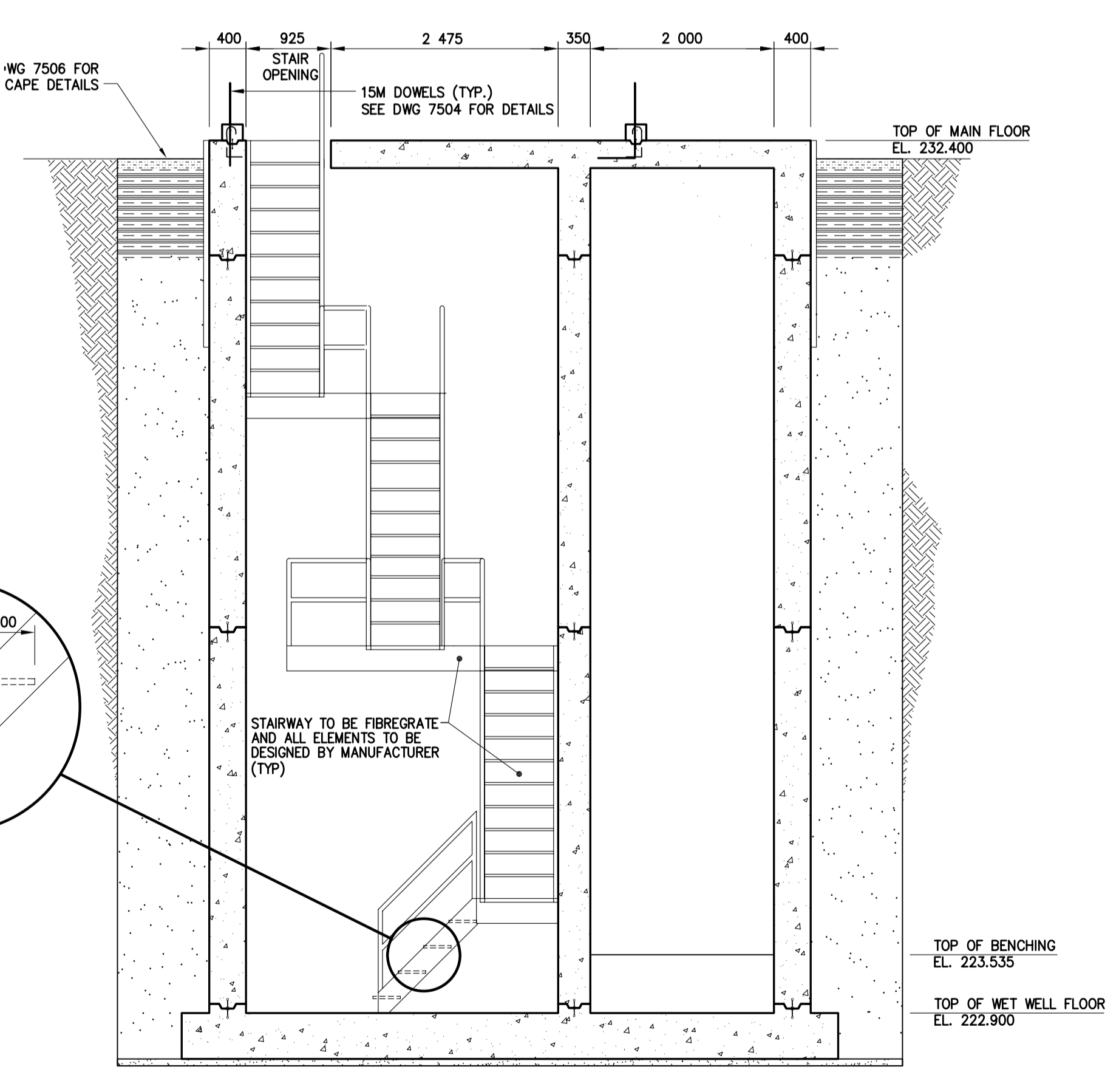
NORTH WALL IN WET WELL
1:50



EAST WALL
1:50



SOUTH WALL
1:50



WEST WALL
1:50



METRIC
WHOLE NUMBERS INDICATE MILLIMETRES
DECIMALIZED NUMBERS INDICATE METRES

A-B
C

A = DETAIL/SECTION No.
B = DRAWING WHERE SHOWN
C = DRAWING WHERE TAKEN

| | | | |
|------------------------------|-----------|--|----|
| DESIGNED BY GK | | CHECKED BY JPL | |
| DRAWN BY TR | | APPROVED BY - | |
| HOR. SCALE VERTICAL AS SHOWN | | RELEASED FOR CONSTRUCTION SIGNED BY K. ZUREK | |
| DATE 2008 02 11 | | DATE 08/02/13 | |
| NO. | REVISIONS | DATE | BY |
| 1 | - | - | - |

ENGINEER'S SEAL
ORIGINAL SIGNED BY G.M. KING 08/02/11
BID OPPORTUNITY 892-2007
PLOT DATE: 2008 02 11

THE CITY OF WINNIPEG
WATER AND WASTE DEPARTMENT

Winnipeg

DUGALD ROAD WASTEWATER PUMPING STATION
STRUCTURAL WALL ELEVATIONS

CONSULTANT DRAWING NUMBER S2
SHEET 10 OF 14
CITY DRAWING NUMBER 7509

Feb 13, 2008 - 2:08pm P: 41800 - 41899 V1846 Dugald Road Pumping Station Drawings V1846 Dugald Pumping Station 080213.dwg -tbc-CONCRETE