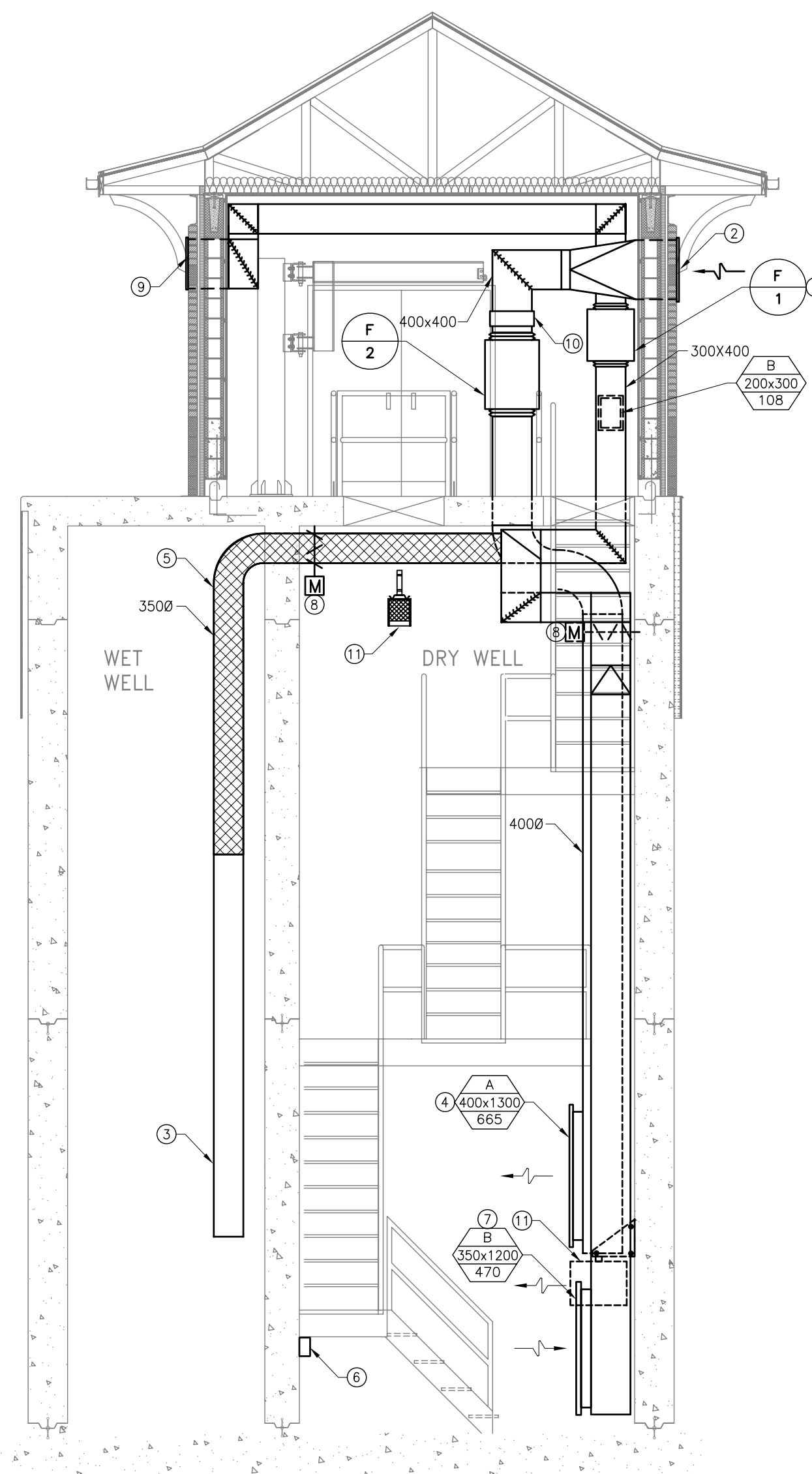
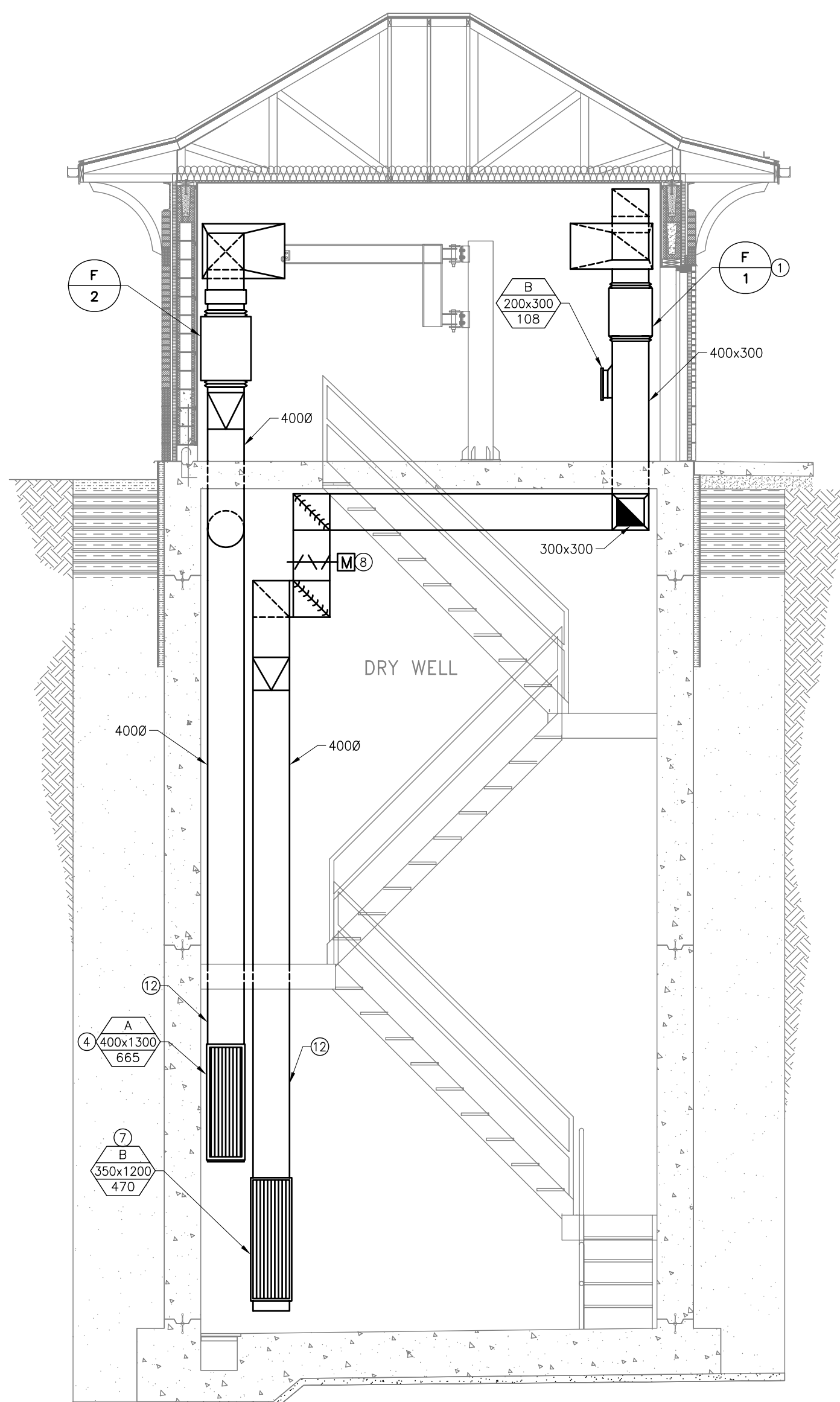


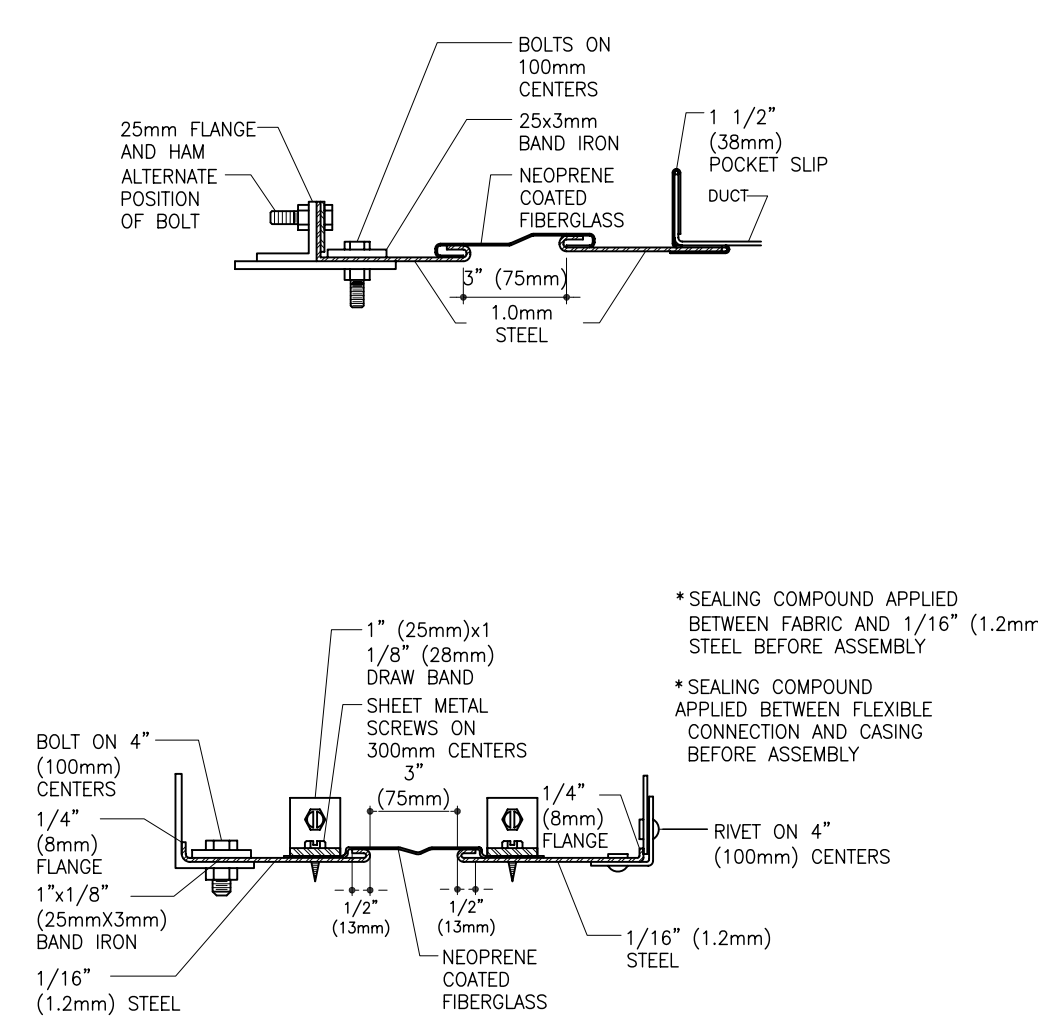
A MAIN FLOOR PLAN
M01 1:50



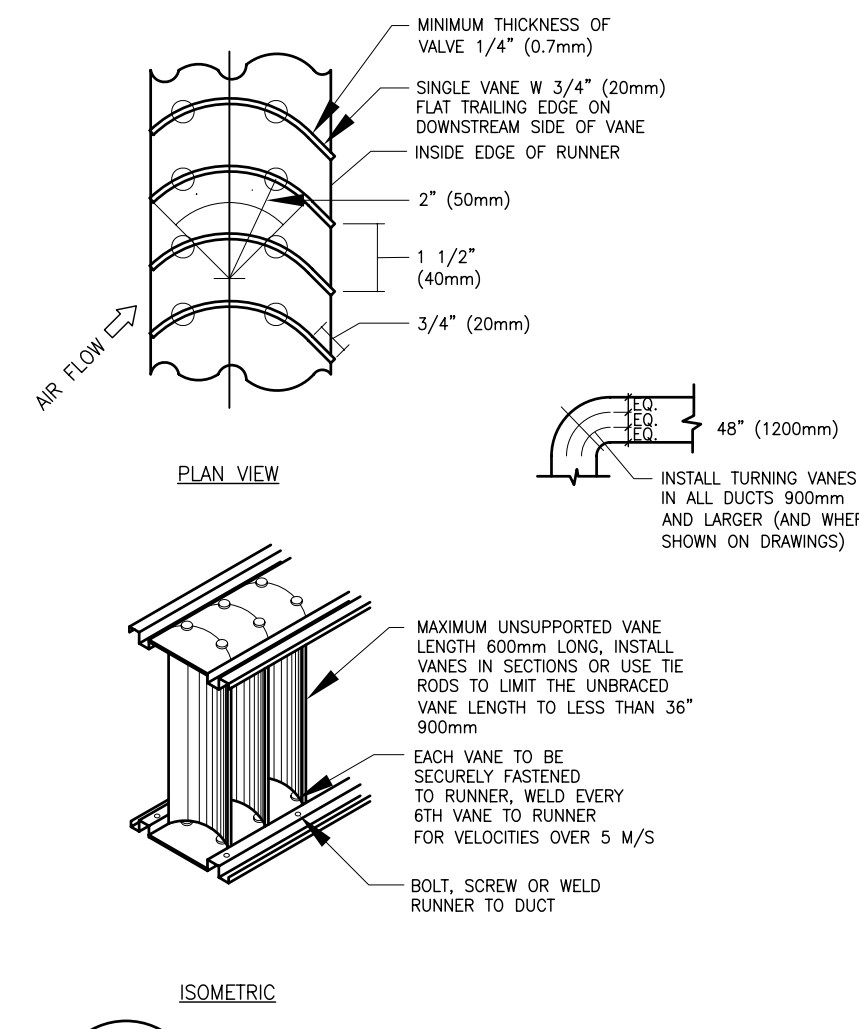
1 BUILDING SECTION
M01 1:50



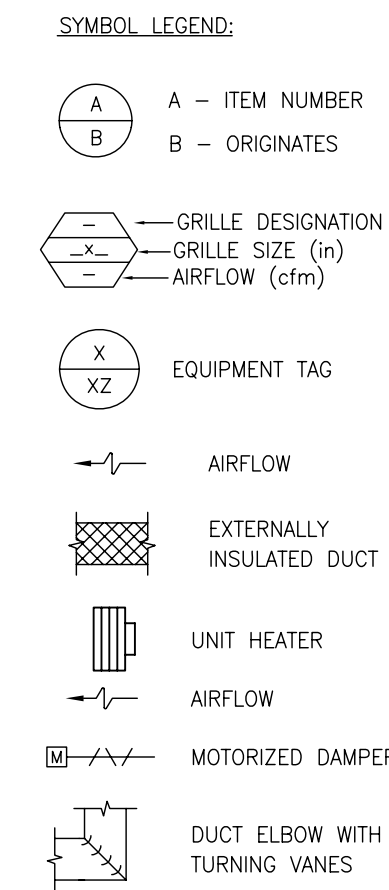
2 BUILDING SECTION
M01 1:50



3 ROUND FLEXIBLE DUCT CONNECTION
M01 NTS



4 TURNING VANE DETAIL
M01 NTS

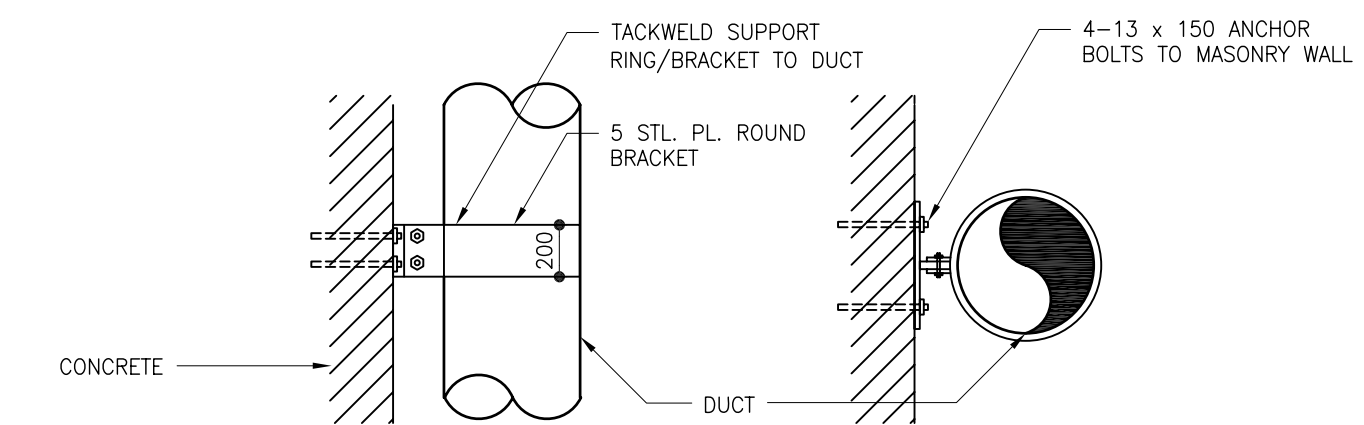


- GENERAL NOTES:**
- AIR FLOWS LISTED ARE BASED ON FAN PERFORMANCE ON HIGH SPEED. CONTRACTOR TO PROVIDE FAN OPERATION DATA FOR BOTH HIGH AND LOW SPEEDS. SUBMIT 4 COPIES OF THE TEST REPORT TO THE CONTRACT ADMINISTRATOR FOR REVIEW.
- DRAWING NOTES:**
- VENTILATION FAN F-1 SUPPORTED FROM STRUCTURE WALL C/W SPRING VIBRATION ISOLATION HANGERS.
 - 900x600 INTAKE LOUVER.
 - 350Ø PVC, WET WELL VENT DUCT.
 - GRILLE TYPE "A" - E.H. PRICE \$10 D/F/L/A. LOCATE GRILLE TO DIRECT AIR AWAY FROM SEWAGE AND WATER LINES. CONFIRM EXACT LOCATION ON SITE.
 - INSULATE DUCTWORK 3000 BACK FROM PENETRATION OF WET WELL WALL EACH WAY FROM BRANCH.
 - VENTILATION SYSTEM EMERGENCY PURGE SWITCH. WHEN ACTIVATED, F-1 AND F-2 WILL SWITCH TO HIGH SPEED.
 - GRILLE TYPE "B" - E.H. PRICE \$30/D/F/L/A.
 - MOTORIZED DAMPERS SHALL BE ULTRA TIGHT CLOSING TAMCO 9000SC.
 - 900x500 EXHAUST LOUVER C/W BIRD SCREEN.
 - 33 KW ELECTRIC DUCT HEATER.
 - 4.8KW ELECTRIC UNIT HEATER. REFER TO ELECTRICAL DRAWINGS.
 - LOCATE DUCTWORK AGAINST WALL. COORDINATE EXACT LOCATION ONSITE.

TAG	SERVICE	FAN TYPE (BASED ON)	LOCATION	FAN MODEL	CAP. (l/s) cfm	E.S.P. (Pa) in. W.G.	SPD. (rpm)	BkW BHP	MTR. (kW) HP	REMARKS
F-1	Exhaust	Greenheck	Main Floor	BSQ-120	674 1429	75 0.30	1429	0.20 0.37	0.37 0.50	c/w two speed motor 1725/1140 rpm. F-1 shall normally run on low speed @ 945 CFM
F-2	Supply	Greenheck	Main Floor	BSQ-120	776 1644	75 0.30	1597	0.28 0.37	0.37 0.50	c/w two speed motor 1725/1140 rpm. F-2 shall normally run on low speed @ 1087 CFM

VENTILATION SYSTEM SEQUENCE OF OPERATION

- THE VENTILATION SYSTEM WILL HAVE TWO MODES OF OPERATION; EMERGENCY PURGE AND NORMAL (CONTINUOUS) OPERATION.
 - NORMAL OPERATION: (SUPPLY/EXHAUST) FANS WILL RUN CONTINUOUSLY AT LOW SPEED.
 - EMERGENCY PURGE: FANS WILL BE AT HIGH SPEED WHEN THE EMERGENCY PUSH BUTTON HAS BEEN ACTIVATED.
 - A MANUAL RESET WILL OVERRIDE THE EMERGENCY PURGE
 - PUSH BUTTON AND MANUAL RESET TO BE LOCATED ON THE MAIN LEVEL NEAR THE EXIT DOOR.
- THE MOTORIZED DAMPER TO THE DRY WELL EXHAUST IS NORMALLY 100% OPEN, AND THE WET WELL DUCT MOTORIZED DAMPER IS NORMALLY FULLY CLOSED.
 - PROVIDE MANUAL SELECTOR SWITCH WHICH CAN BE SWITCHED BETWEEN NORMAL (DRY WELL) EXHAUST MODE AND WET WELL EXHAUST MODE.
 - IN THE WET WELL EXHAUST MODE THE DRYWELL EXHAUST DAMPER WILL FULLY CLOSE AND THE WET WELL DAMPER WILL FULLY OPEN. THE SELECTOR SWITCH IS TO BE LOCATED IN A KEYPAD, VANDAL RESISTANT ENCLOSURE.
 - ELECTRIC HEAT COIL TO MAINTAIN A SUPPLY TEMPERATURE OF 50°C. PROVIDE DISCHARGE AIR TEMPERATURE CONTROLLER WITH MANUAL ADJUSTMENT.



5 EXPOSED ROUND DUCT SUPPORT
M01 NTS

METRIC
WHOLE NUMBERS INDICATE MILLIMETRES
DECIMALIZED NUMBERS INDICATE METRES

<p>Accutech Engineering Inc. Tomorrow's Technology Today 605-287 Broadway, Winnipeg, Manitoba Canada R3C-0R9 Phone (204) 944-1555 Fax (204) 944-1444 www.accutechinc.ca</p>				<p>ENGINEER'S SEAL</p> <p>ORIGINAL SIGNED BY G.B. WRIGHT 08/02/12</p>		<p>THE CITY OF WINNIPEG WATER AND WASTE DEPARTMENT</p> <p>Winnipeg</p>		<p>CONSULTANT DRAWING NUMBER M01</p>	
<p>DESIGNED BY EH</p> <p>DRAWN BY BD</p>		<p>CHECKED BY MH</p> <p>APPROVED BY GW</p>		<p>RELEASED FOR CONSTRUCTION SIGNED BY K. ZUREK</p>		<p>WASTEWATER PUMPING STATION MECHANICAL LAYOUT AND NOTES</p>		<p>SHEET 8 OF 14</p>	
<p>NO. REVISIONS</p>		<p>DATE BY</p>		<p>DATE 08/02/11</p>		<p>DATE 08/02/13</p>		<p>CITY DRAWING NUMBER 7507</p>	
<p>5 ISSUED FOR TENDER 08/02/11 GW</p> <p>4 ISSUED FOR 100% REVIEW 08/01/25 GW</p> <p>3 ISSUED FOR 95% REVIEW 07/12/14 GW</p> <p>2 ISSUED FOR 75% REVIEW 07/09/11 MH</p> <p>1 ISSUED FOR 50% REVIEW 07/06/28 EH</p>		<p>HOR. SCALE AS SHOWN</p> <p>VERTICAL</p>		<p>RELEASED FOR CONSTRUCTION</p>		<p>BID OPPORTUNITY 892-2007</p> <p>PLOT DATE: 08/02/11</p>		<p>DUGALD ROAD WASTEWATER PUMPING STATION MECHANICAL LAYOUT AND NOTES</p>	