

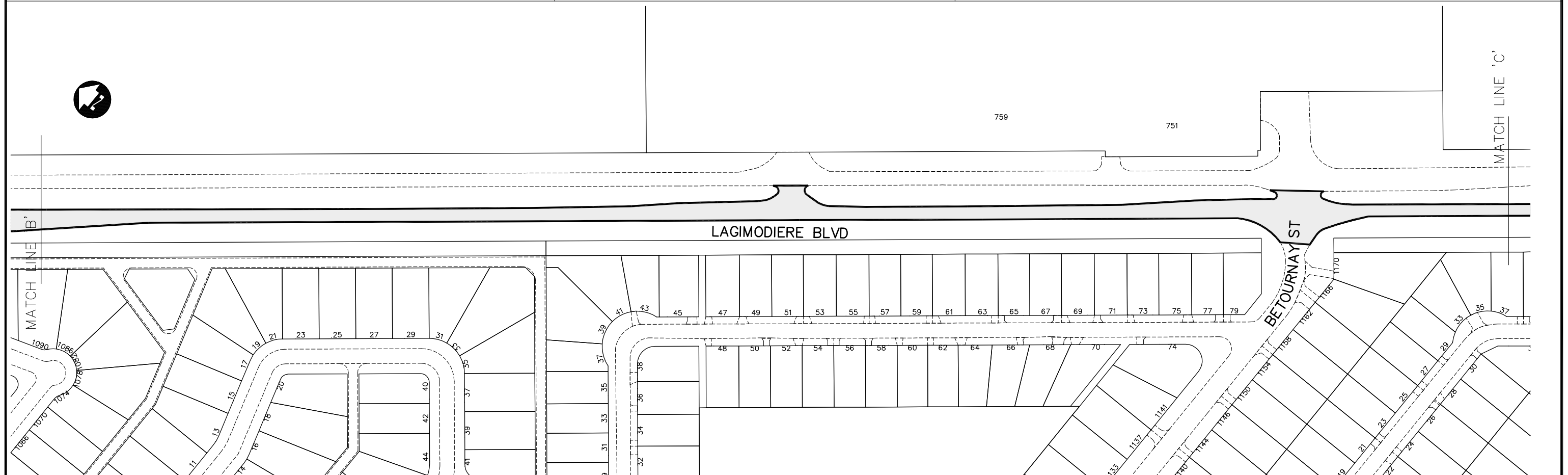
TYPICAL SECTION

NOTES:

- EXISTING CONCRETE ROADWAY WITH ASPHALT OVERLAY.
- CURB AND SIDEWALK REPLACEMENT TO BE MINIMAL.
- AVERAGE PLANING AND ASPHALT REPLACEMENT THICKNESS 50-65 mm.
- CONCRETE ROADWAY REPAIRS TO BE MINIMIZED. USE TECHNIQUES OF FULL DEPTH CONCRETE REPAIRS, PARTIAL DEPTH PATCHING, AND FULL DEPTH ASPHALT PATCHING.
- TIE IN PAVING AT SIDE STREETS AND APPROACHES TO BE MINIMIZED.
- $L = 3500m$   $W = 8m$   $A = 28,000m^2$

CONSTRUCTION NOTES:

1. CONTRACTOR SHALL TAKE PRECAUTIONARY STEPS TO AVOID DAMAGE FROM CONSTRUCTION ACTIVITIES TO EXISTING BOULEVARDS AND TREES WITHIN THE LIMITS OF CONSTRUCTION.
2. LOCATION OF EXISTING SERVICES ARE TO BE CONFIRMED IN THE FIELD BY THE CONTRACTOR.
3. TIE-INS TO BE VERIFIED IN THE FIELD BY THE CONTRACT ADMINISTRATOR.
4. JOINT, SLAB, CURB AND SIDEWALK REPAIRS TO BE MARKED OUT IN THE FIELD BY THE CONTRACT ADMINISTRATOR.
5. CONTRACTOR RESPONSIBLE FOR ALL BARRICADES AND SIGNAGE EXCEPT REGULATORY SIGNS (eg. NO LEFT TURNS) SUPPLIED BY TRAFFIC SERVICES BRANCH.



 MILL & FILL LIMIT



DATE:  
12-6-07  
DRAWN BY:  
MRD

DRAWING NO.:  
SHT03-R0  
SCALE:  
1:2000

BID OPPORTUNITY No. 879-2007  
LAGIMODIERE BLVD SOUTHBOUND  
MARION STREET TO FERMOR AVENUE  
MILL AND FILL