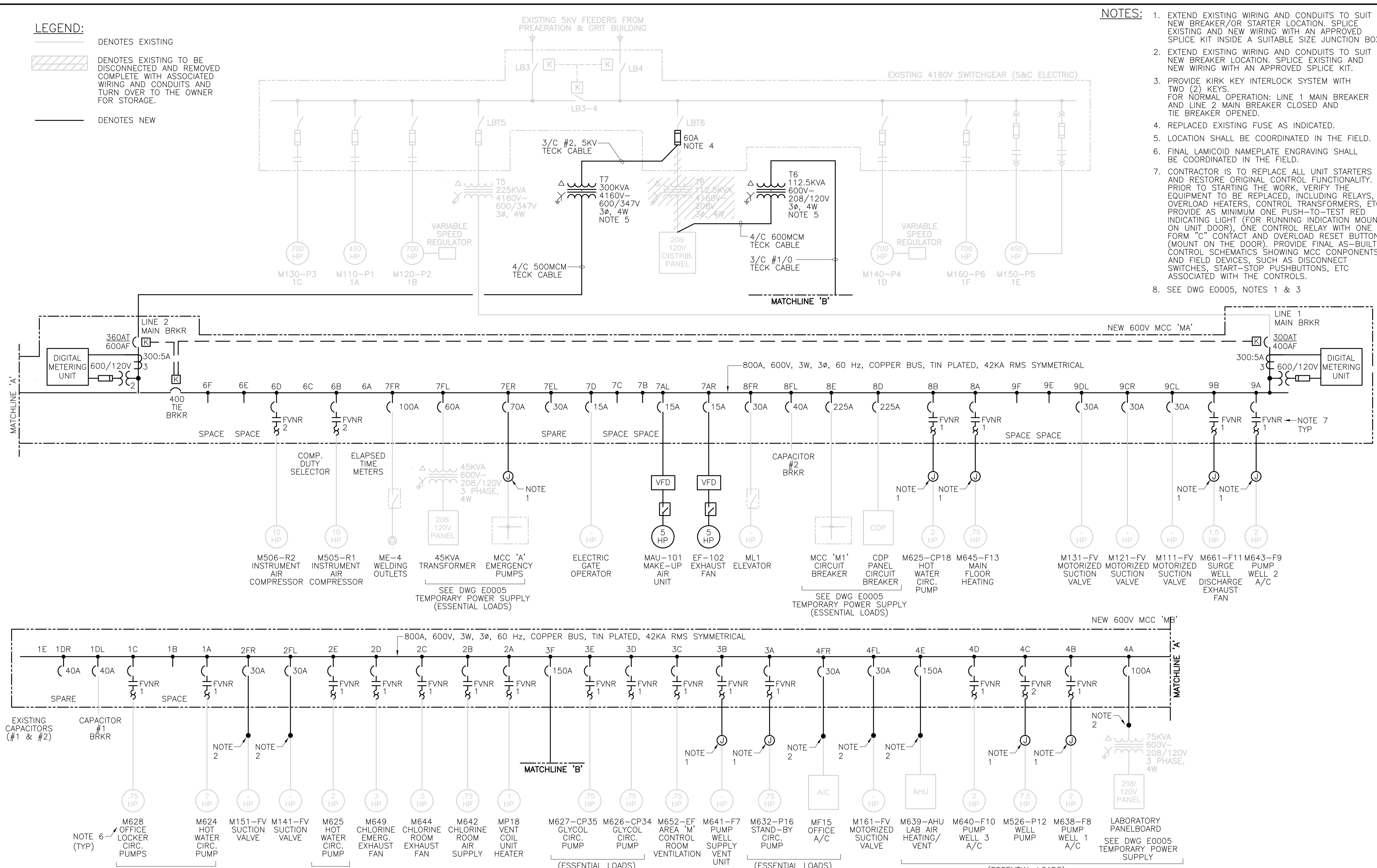


- LEGEND:**
- DENOTES EXISTING
  - ▨ DENOTES EXISTING TO BE DISCONNECTED AND REMOVED COMPLETE WITH ASSOCIATED WIRING AND CONDUITS AND TURN OVER TO THE OWNER FOR STORAGE.
  - DENOTES NEW

- NOTES:**
1. EXTEND EXISTING WIRING AND CONDUITS TO SUIT NEW BREAKER/OR STARTER LOCATION. SPLICE EXISTING AND NEW WIRING WITH AN APPROVED SPLICE KIT INSIDE A SUITABLE SIZE JUNCTION BOX.
  2. EXTEND EXISTING WIRING AND CONDUITS TO SUIT NEW BREAKER LOCATION. SPLICE EXISTING AND NEW WIRING WITH AN APPROVED SPLICE KIT.
  3. PROVIDE KIRK KEY INTERLOCK SYSTEM WITH TWO (2) KEYS. FOR NORMAL OPERATION: LINE 1 MAIN BREAKER AND LINE 2 MAIN BREAKER CLOSED AND TIE BREAKER OPENED.
  4. REPLACED EXISTING FUSE AS INDICATED.
  5. LOCATION SHALL BE COORDINATED IN THE FIELD.
  6. FINAL LAMICOID NAMEPLATE ENGRAVING SHALL BE COORDINATED IN THE FIELD.
  7. CONTRACTOR IS TO REPLACE ALL UNIT STARTERS AND RESTORE ORIGINAL CONTROL FUNCTIONALITY. PRIOR TO STARTING THE WORK, VERIFY THE EQUIPMENT TO BE REPLACED, INCLUDING RELAYS, OVERLOAD HEATERS, CONTROL TRANSFORMERS, ETC. PROVIDE AS MINIMUM ONE PUSH-TO-TEST RED INDICATING LIGHT (FOR RUNNING INDICATION MOUNT ON UNIT DOOR), ONE CONTROL RELAY WITH ONE FORM "C" CONTACT AND OVERLOAD RESET BUTTON (MOUNT ON THE DOOR). PROVIDE FINAL AS-BUILT CONTROL SCHEMATICS SHOWING MCC COMPONENTS AND FIELD DEVICES, SUCH AS DISCONNECT SWITCHES, START-STOP PUSHBUTTONS, ETC ASSOCIATED WITH THE CONTROLS.
  8. SEE DWG E0005, NOTES 1 & 3



**APCGM**  
 Certificate of Authorization  
 CH2M HILL Canada Ltd.  
 No. 1441 Expiry: April 30, 2008

B.M. ELEV.	FIELD BOOK #:
POSTED TO LBIS	
DESIGNED BY	R.BATAC
CHECKED BY	J.LAUFRERS
DRAWN BY	R.BATAC
APPROVED BY	E.SHARP
HOR. SCALE	NTS
RELEASED FOR CONSTRUCTION	K. ZUREK
VERTICAL	
DATE	2007 06 20
DATE	2007/11/29
NO.	REVISIONS
0	ISSUED FOR TENDER 07/11/28 RB
NO.	REVISIONS
NO.	REVISIONS

**CH2MHILL**

DESIGNED BY: R.BATAC  
 CHECKED BY: J.LAUFRERS  
 DRAWN BY: R.BATAC  
 APPROVED BY: E.SHARP  
 HOR. SCALE: NTS  
 RELEASED FOR CONSTRUCTION: K. ZUREK  
 VERTICAL: [ ]  
 DATE: 2007 06 20  
 DATE: 2007/11/29

ENGINEER'S SEAL  
 ORIGINAL SIGNED BY  
 J.R. LAUFERS  
 2007/11/28  
 PROJECT No.: 358676  
 PLOT DATE: 2007/11/28

**THE CITY OF WINNIPEG**  
 WATER AND WASTE DEPARTMENT

**Winnipeg**

NORTH END WATER  
 POLLUTION CONTROL CENTRE  
**WET WELL REHABILITATION**  
 ELECTRICAL  
 MODIFIED EXISTING SINGLE LINE DIAGRAM

SHEET 23 OF 24  
 CONSULTANT DRAWING NUMBER  
 E0004  
 CITY DRAWING NUMBER  
 1-0101M-F-  
 E0002-000-00D