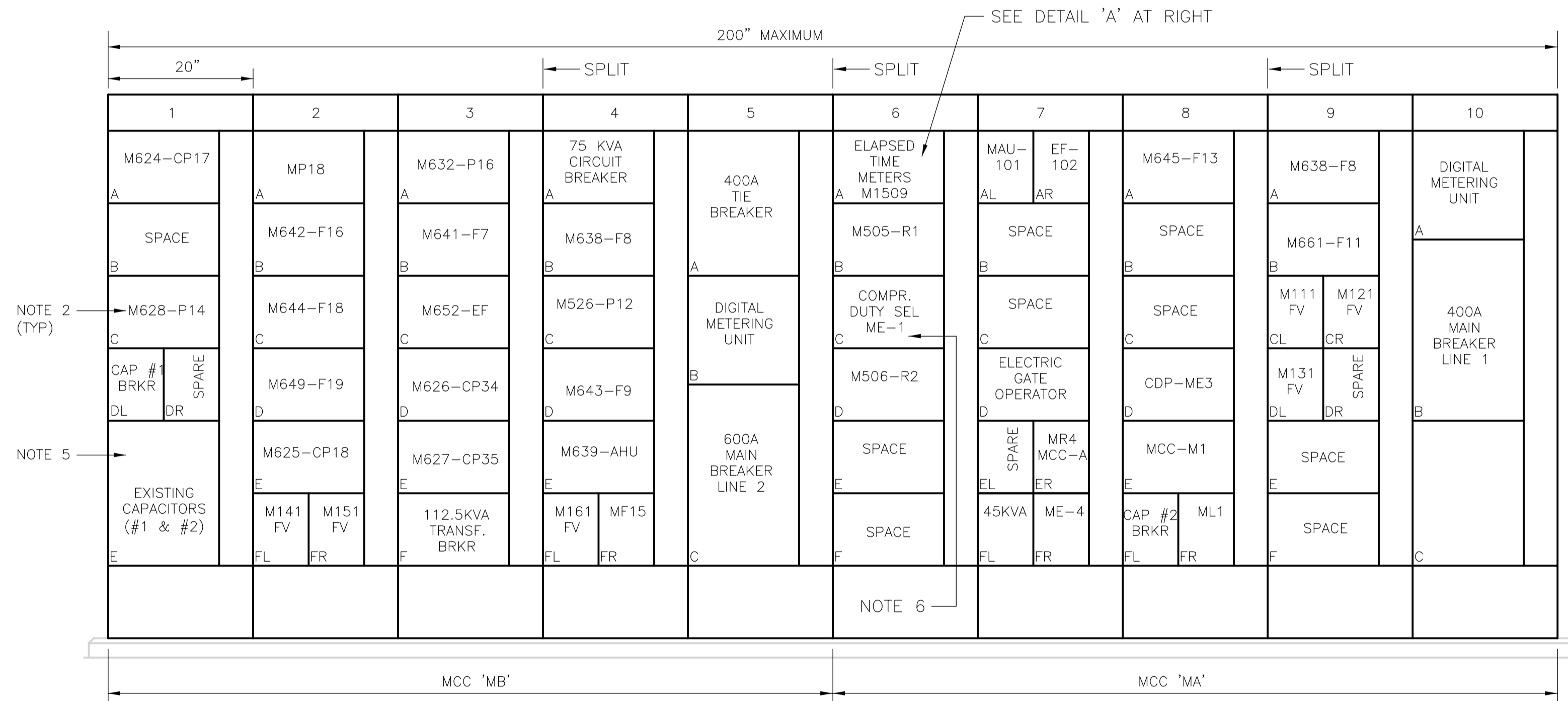


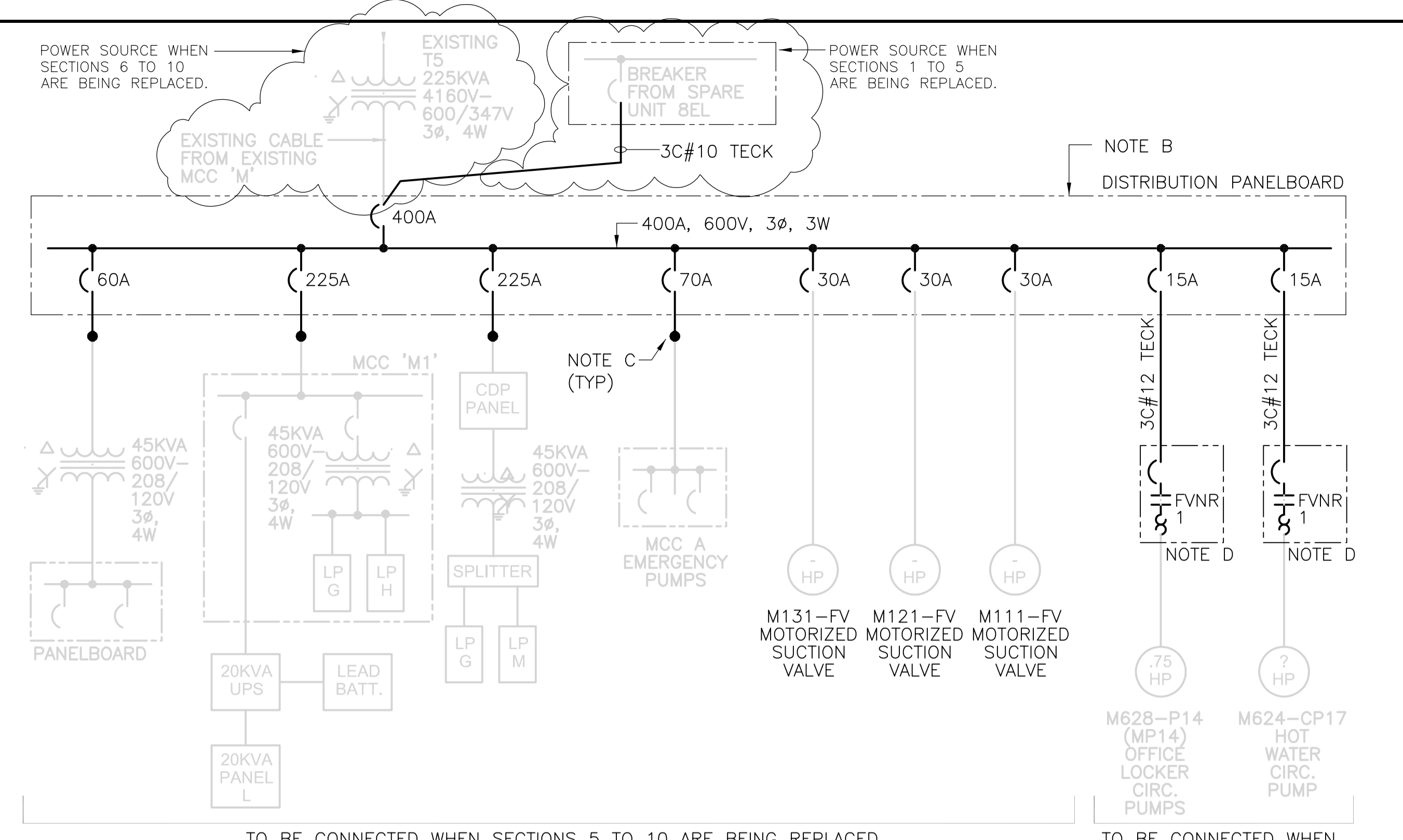
EXISTING MCC 'M' - FRONT ELEVATION

NOTE: CONTRACTOR TO COMPLY WITH DIVISION 1 REQUIREMENTS IN REPLACING EXISTING.



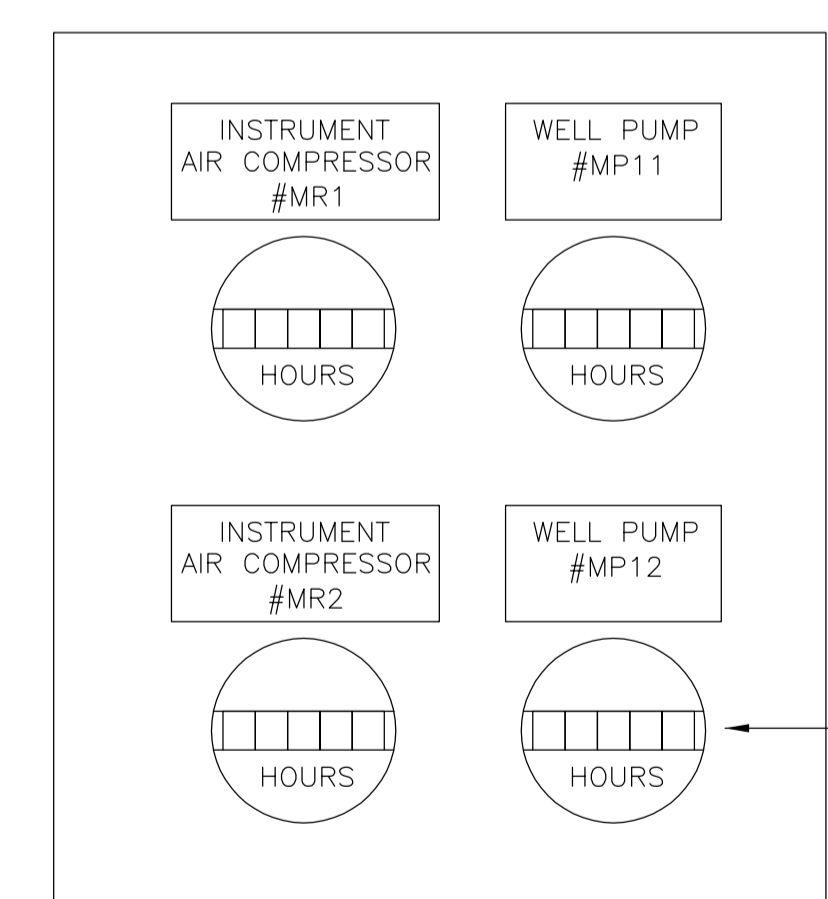
NEW MCC 'M' - FRONT ELEVATION

N.T.S.



ESSENTIAL LOADS - TEMPORARY POWER SUPPLY

- NOTES: A. CONTRACTOR TO BE RESPONSIBLE FOR DEVELOPMENT AND EXECUTION OF A SEQUENCE OF WORK PLAN FOR MCC 'M' REPLACEMENT. THE TEMPORARY PANELBOARD DESCRIBED HEREIN IS BASED ON A SUGGESTED APPROACH AND IS FOR ILLUSTRATION PURPOSES ONLY, AS DETAILED IN THE SPECIFICATION SECTION 01040. ALTERNATIVE APPROACHES MAY REQUIRE MODIFICATIONS TO THE TEMPORARY PANELBOARD.
- B. SUPPLY TEMPORARY POWER DISTRIBUTION PANELBOARD TO SUPPLY POWER TO EXISTING ESSENTIAL LOADS WHILE EXISTING MCC 'M' IS BEING REPLACED. SUGGEST TO INSTALL DISTRIBUTION PANELBOARD IN THE BASEMENT BELOW EXISTING MCC 'M'.
- C. EXTEND EXISTING WIRING TO SUIT TEMPORARY DISTRIBUTION PANELBOARD LOCATION.
- D. REMOVE THE POWER DISTRIBUTION PANELBOARD ONCE NEW MCC 'MA' AND 'MB' IS IN PLACE AND TURNED OVER TO THE OWNER FOR STORAGE. CONNECT EXISTING ESSENTIAL LOADS AS SHOWN ON DWG E0004.
- E. PROVIDE A TEMPORARY SIZE 1, EEMAC 12, COMBINATION FULL NON-REVERSING STARTER COMPLETE WITH RED INDICATING LIGHT (RUNNING), FUSED SECONDARY CONTROL TRANSFORMER, OVERLOAD RESET BUTTON AND ONE CONTROL RELAY. ONCE STARTERS IN NEW MCC 'MA' AND 'MB' ARE INSTALLED, CONNECT LOADS TO RESPECTIVE STARTER AND TURN OVER TEMPORARY STARTERS TO THE OWNER.



DETAIL 'A'

N.T.S.

NOTES:

- REPLACE EXISTING MCC 'M' WITH NEW MCC 'MA' AND 'MB' AS SHOWN. OVERALL LENGTH OF NEW MCC SHALL BE THE SAME AS EXISTING DUE TO SPACE LIMITATION.
- SEE DWG E0004, NOTE 6
- CONTRACTOR TO COORDINATE WITH CONTRACT ADMINISTRATOR/OWNER REGARDING SCHEDULE SHUTDOWN IN ORDER TO REPLACE EXISTING MCC 'M'.
- CONTRACTOR TO RE-USE EXISTING ELAPSED TIME METERS AND ASSOCIATED WIRING. PROVIDE REQUIRED TERMINAL BLOCKS AND COORDINATE CUT-OUTS REQUIRED WITH THE MCC MANUFACTURER.
- RELOCATE EXISTING CAPACITORS TO THE NEW MCC UNIT SPACE.
- RELOCATE EXISTING SELECTOR SWITCH AND ALTERNATOR TO NEW MCC COMPARTMENT. CONTRACTOR TO COORDINATE WITH MCC SUPPLIER RE NUMBER OF TERMINAL BLOCKS AND SWITCH CUT-OUT REQUIRED.



B.M. ELEV.	FIELD BOOK #:
POSTED TO LBIS	
DESIGNED BY	R.BATAC
CHECKED BY	J.LAUFERS
DRAWN BY	R.BATAC
APPROVED BY	E.SHARP
HOR. SCALE	NTS
RELEASED FOR CONSTRUCTION	K. ZUREK
VERTICAL	
DATE	2007 06 20
DATE	2007/11/29
NO.	
ISSUED FOR TENDER	07/11/28 RB
REVISIONS	DATE BY

CH2MHILL

ENGINEER'S SEAL

ORIGINAL SIGNED BY

J.R. LAUFERS

2007/11/28

PROJECT No.: 358676

PLOT DATE: 2007/11/28

THE CITY OF WINNIPEG
WATER AND WASTE DEPARTMENT

WET WELL REHABILITATION
ELECTRICAL
MCC - FRONT ELEVATIONS

NORTH END WATER
POLLUTION CONTROL CENTRE

SHEET **24** OF **24**

CONSULTANT DRAWING NUMBER
E0005

CITY DRAWING NUMBER
**1-0101M-D-
E0002-000-00D**