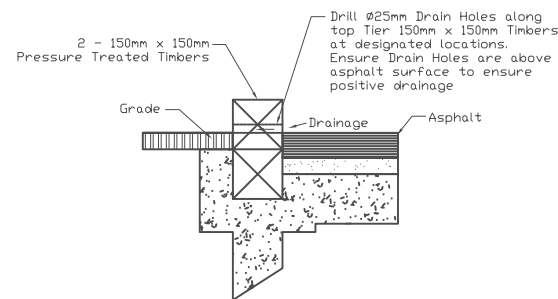
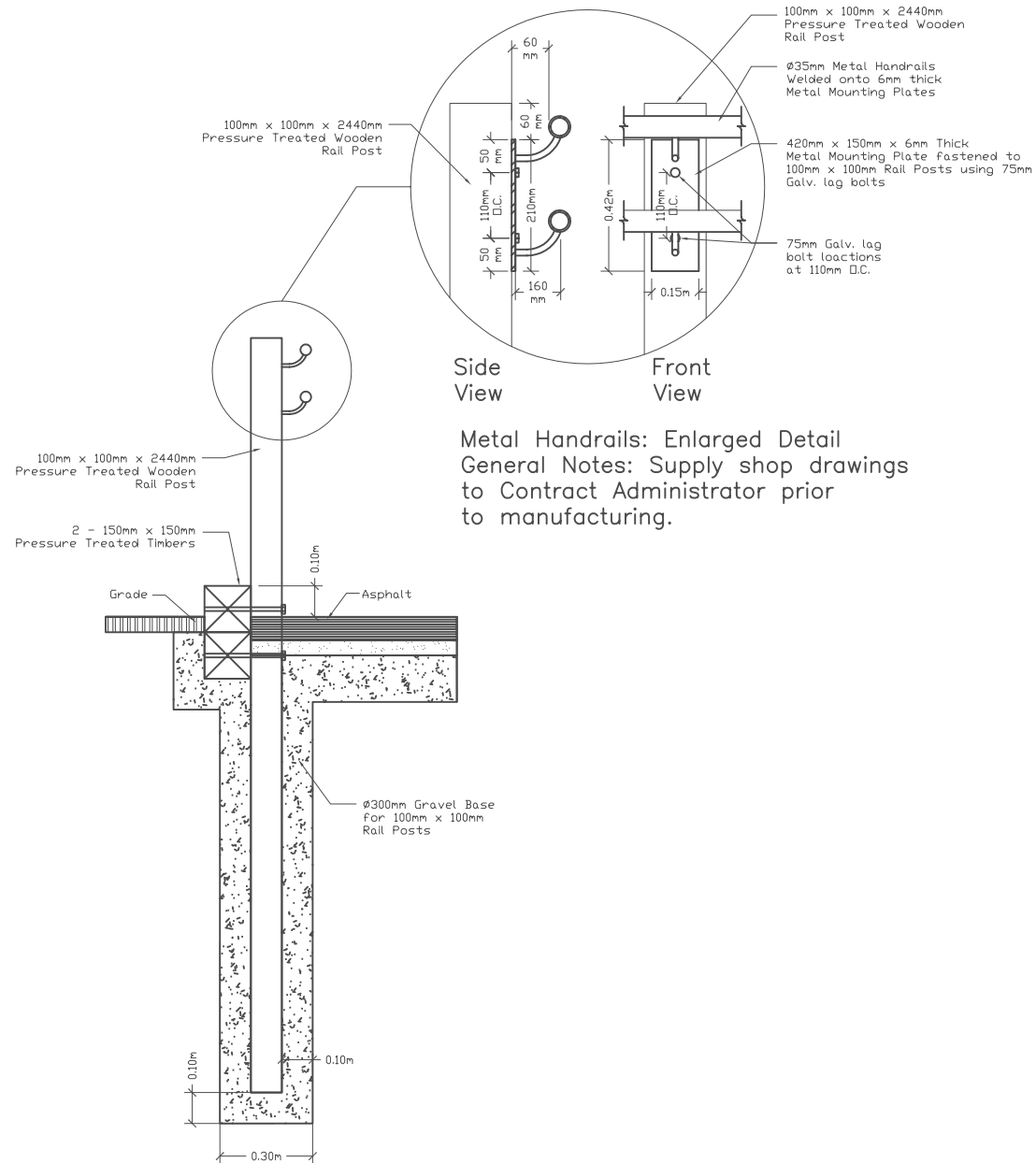


1 Timber Rebar Detail
D2

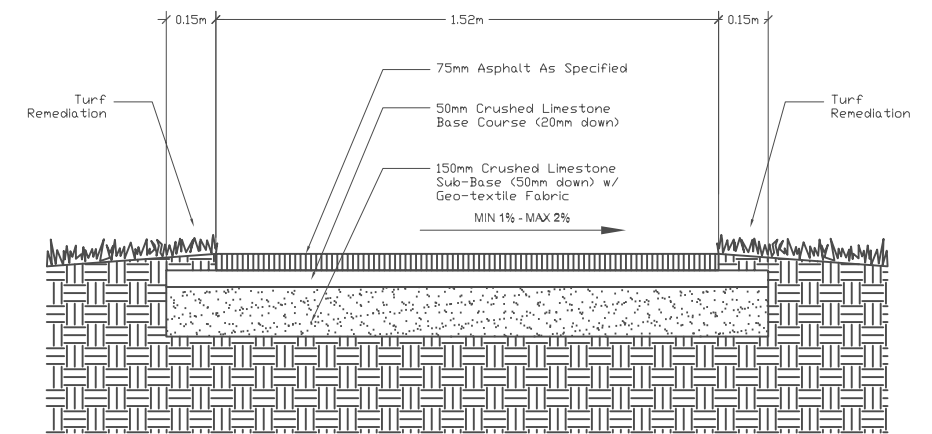


2 Drain Hole Detail
D2

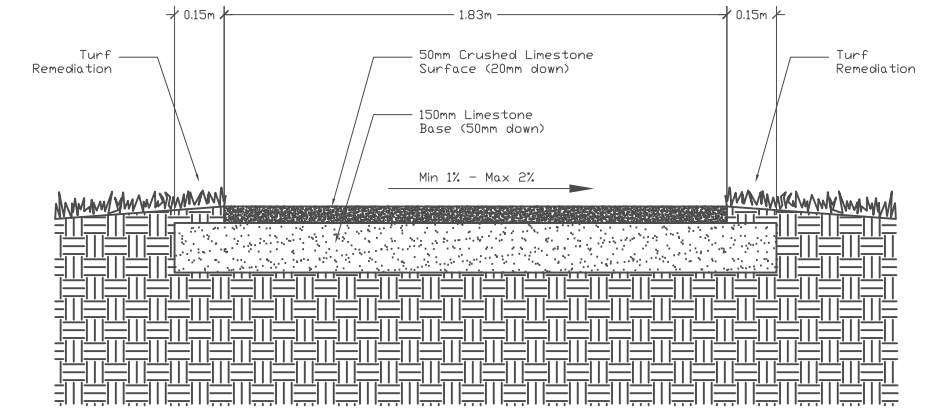


3 Handrail Post & Metal Rails Detail
D2

Metal Handrails: Enlarged Detail
General Notes: Supply shop drawings to Contract Administrator prior to manufacturing.



4 Asphalt Path Detail
D2



5 Gravel Path Detail
D2

LOCATION OF UNDERGROUND STRUCTURES AS SHOWN ARE BASED ON THE BEST INFORMATION AVAILABLE BUT NO GUARANTEE IS GIVEN THAT ALL EXISTING UTILITIES ARE SHOWN OR THAT THE GIVEN LOCATIONS ARE EXACT. CONFIRMATION OF EXISTENCE AND EXACT LOCATION OF ALL SERVICES MUST BE OBTAINED FROM THE INDIVIDUAL UTILITIES BEFORE PROCEEDING WITH CONSTRUCTION.



THE CITY OF WINNIPEG
Planning, Property and Development Department
Planning and Land Use Division
Unit 15 - 30 Fort Street, Winnipeg, MB, (R3C 4X5)

DESIGNED BY	RC	CHECKED BY	APPROVED BY
DRAWN BY	RC	RELEASED FOR CONSTRUCTION	
HORIZ. SCALE	NTS		
VERT. SCALE	NTS		
DATE	NOV.19/07	MANAGER, PLANNING AND LAND USE DIVISION	DATE

DRAWING TITLE
**NORWOOD COMMUNITY CENTRE
ACCESS RAMP - DETAILS**



CAD DRAWING NO.
DRAWING NO.
122/07-D2