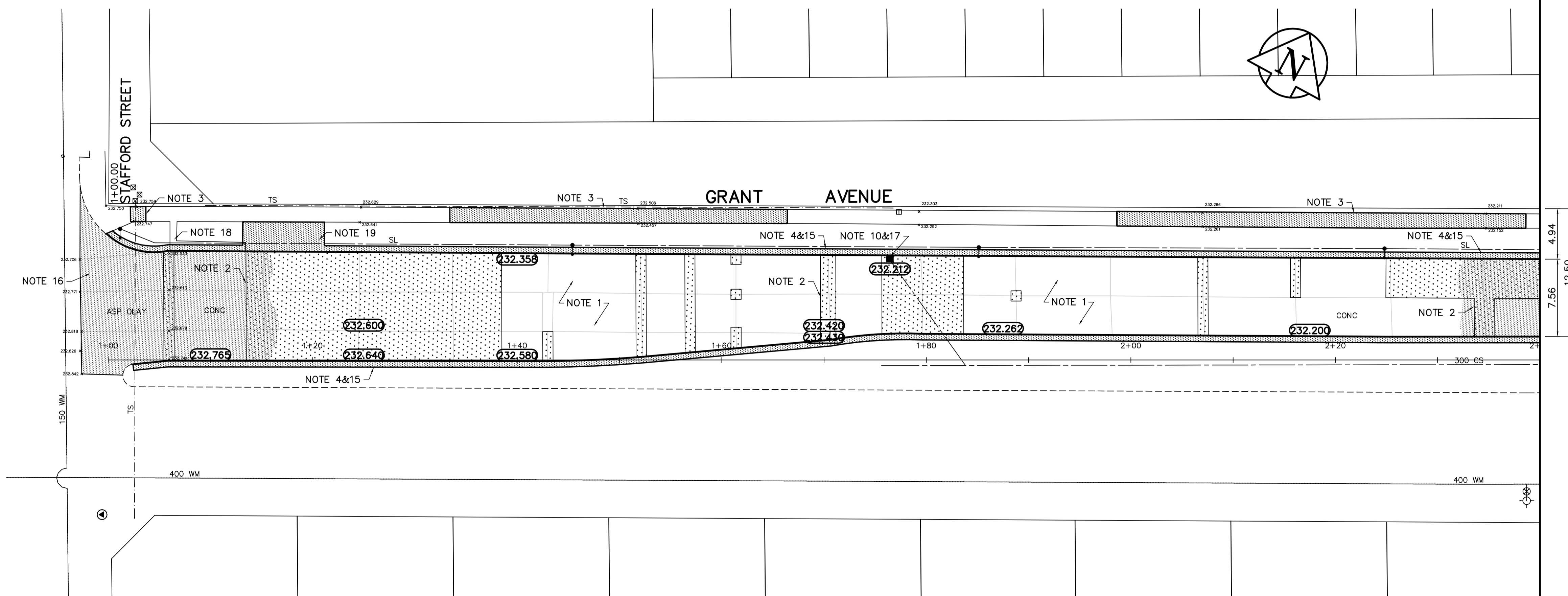


KEY PLAN



REFERENCE NOTES

- A. BASELINE IS CENTRED BETWEEN NORTH AND SOUTH PROPERTY LINES
- B. LEGAL PLAN - L.B.I.S.
- C. ADD 200.000 TO OBTAIN GEODETIC DATUM
- D. PAVEMENT DIMENSIONS ARE TO BACK OF CURB
- E. EARTH TECH FIELD BOOK NO. 4528

CONSTRUCTION NOTES

1. CONSTRUCT NEW ASPHALTIC CONCRETE OVERLAY
2. CONSTRUCT NEW 230mm PLAIN DOWELLED CONCRETE
3. RENEW EXISTING CONCRETE SIDEWALK
4. CONSTRUCT NEW MONOLITHIC SPLASH STRIP
5. CONSTRUCT NEW MODIFIED MONOLITHIC SPLASH STRIP
6. CONSTRUCT NEW MONOLITHIC CONCRETE MEDIAN SLAB
7. CONSTRUCT NEW CONCRETE MEDIAN SLAB
8. ABANDON EXISTING DRAINAGE INLET
9. INSTALL NEW CURB AND GUTTER INLET c/w CATCHPIT (SD-023) AND CONNECT TO EXISTING CATCHBASIN
10. INSTALL NEW CURB AND GUTTER INLET c/w CATCHBASIN (SD-024) AND CONNECT NEW 250mm LEAD TO EXISTING LEAD
11. ADJUST EXISTING CATCHBASIN FRAME AND COVER
12. ADJUST EXISTING MANHOLE FRAME AND COVER
13. INSTALL NEW CAST IRON RISER RING
14. INSTALL NEW CURB AND GUTTER INLET FRAME AND COVER
15. REMOVE EXISTING BARRIER CURB
16. PLANE EXISTING ASPHALT PAVEMENT
17. REMOVE EXISTING CATCHBASIN
18. REMOVE EXISTING PRECAST SIDEWALK BLOCK
19. CONSTRUCT NEW CONCRETE SIDEWALK



Certificate of Authorization

Earth Tech Canada Inc.

No. 730 Expiry: April 30, 2007

METRIC

WHOLE NUMBERS INDICATE MILLIMETRES
DECIMALIZED NUMBERS INDICATE METRES

EXISTING	LEGEND - PLAN	PROPOSED	EXISTING	LEGEND - PLAN	PROPOSED	EXISTING	LEGEND - PROFILE	PROPOSED
150 mm W.M.	WATERMAIN	150 mm W.M.	HYDRO	HYDRO	HYDRO	⊙	PROFILE	⊙
⊙	HYDRANT	⊙	M.T.S.	M.T.S.	M.T.S.	⊙	NORTH MEDIAN GUTTER	⊙
⊙	VALVE	⊙	CONCRETE	CONCRETE	CONCRETE	⊙	SOUTH MEDIAN GUTTER	⊙
300mm L.D.S.	LAND DRAINAGE SEWER	300mm L.D.S.	ASPHALT	ASPHALT	ASPHALT	⊙	NORTH GUTTER	⊙
250mm W.W.S.	WASTEWATER SEWER	250mm W.W.S.	PROPERTY LINE	PROPERTY LINE	PROPERTY LINE	⊙	SOUTH GUTTER	⊙
○	MANHOLE	○	SURVEY BAR	SURVEY BAR	SURVEY BAR	⊙	NORTH PROPERTY LINE	⊙
□	CATCH BASIN	□	ELEVATION	ELEVATION	ELEVATION	⊙		
▽	CURB INLET	▽	TREE	TREE	TREE	⊙		
+	JUNCTIONS	+	SIDEWALK RAMP	SIDEWALK RAMP	SIDEWALK RAMP	⊙		
—	CULVERT	—	CONCRETE SIDEWALK	CONCRETE SIDEWALK	CONCRETE SIDEWALK	⊙		
—	GAS	—	FENCE	FENCE	FENCE	⊙		

LOCATION APPROVED UNDERGROUND STRUCTURES

SUPV. U/G STRUCTURES DATE COMMITTEE

NOTE:

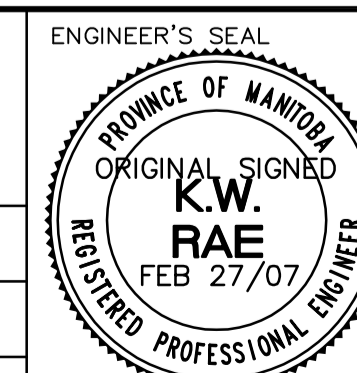
LOCATION OF UNDERGROUND STRUCTURES AS SHOWN ARE BASED ON THE BEST INFORMATION AVAILABLE, BUT NO GUARANTEE IS GIVEN THAT ALL EXISTING UTILITIES ARE SHOWN OR THAT THE GIVEN LOCATIONS ARE EXACT. CONFIRMATION OF EXISTENCE AND EXACT LOCATION OF ALL SERVICES MUST BE OBTAINED FROM THE INDIVIDUAL UTILITIES BEFORE PROCEEDING WITH CONSTRUCTION.

B.M. 52-005 7.6m Conc. Pile, 7 m N. of curb along Grant Ave. & 8.2 m W. of line of E.L. of Cookburn St. N.
ELEV. 232.337



A Tyco International Ltd. Company

DESIGNED BY	RC	CHECKED BY	KWR
DRAWN BY	RC	APPROVED BY	
HOR. SCALE:	1:250	RELEASED FOR CONSTRUCTION BY:	
VERTICAL:	1:10		
NO. REVISIONS		DATE	2007/01/31



CONSULTANT DRAWING NO. CT09

THE CITY OF WINNIPEG
PUBLIC WORKS DEPARTMENT
TRANSPORTATION ENGINEERING DIVISION

GRANT AVENUE (WESTBOUND)
PEMBINA HIGHWAY TO STAFFORD STREET
CONCRETE REPAIRS AND ASPHALT OVERLAY

PLAN/PROFILE
STAFFORD STREET TO STA. 2+40

CITY DRAWING NUMBER P-3274-9
SHEET 9 OF 13