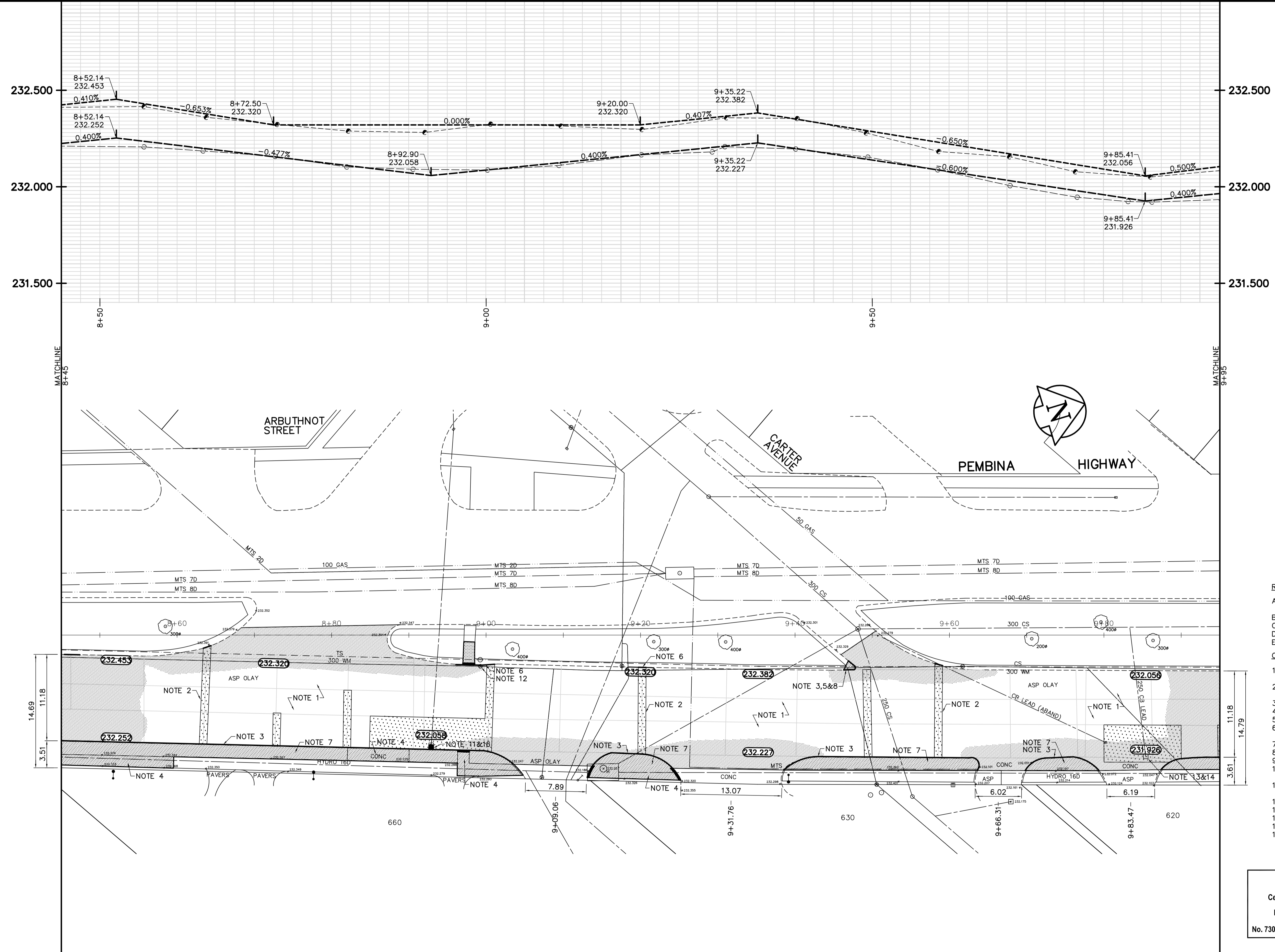


KEY PLAN



REFERENCE NOTES

- A. BASELINE IS CENTRED BETWEEN SOUTHBOUND MEDIAN AND GUTTER BACK OF CURB LINES.
- B. LEGAL PLAN - L.B.I.S.
- C. ADD 200.000 TO OBTAIN GEODETIC DATUM.
- D. PAVEMENT DIMENSIONS ARE TO BACK OF CURB.
- E. EARTH TECH FIELD BOOK NO. 4528.

CONSTRUCTION NOTES

- 1. PLANE EXISTING OVERLAY AND CONSTRUCT NEW ASPHALTIC CONCRETE OVERLAY
- 2. CONSTRUCT NEW 230mm PLAIN DOWELLED CONCRETE PAVEMENT c/w ASPHALTIC CONCRETE OVERLAY
- 3. REMOVE EXISTING CONCRETE BARRIER CURB
- 4. REMOVE EXISTING PRECAST SIDEWALK BLOCK
- 5. REMOVE EXISTING CONCRETE BARRIER CURB AND ADJUST EXISTING PRECAST SIDEWALK BLOCK
- 6. CONSTRUCT NEW MONOLITHIC CONCRETE CURB AND SIDEWALK
- 7. CONSTRUCT NEW MONOLITHIC CONCRETE BULLNOSE
- 8. ABANDON EXISTING DRAINAGE INLET
- 9. ABANDON EXISTING WATER VALVE TO GRADE
- 10. INSTALL NEW CURB AND GUTTER FRAME INLET c/w CATCHPIT (SD-023) AND CONNECT TO EXISTING CATCHBASIN
- 11. INSTALL NEW CURB AND GUTTER FRAME INLET c/w CATCHBASIN (SD-024) AND CONNECT TO EXISTING CATCHBASIN LEAD
- 12. ADJUST EXISTING WATER VALVE TO GRADE
- 13. ADJUST EXISTING MANHOLE/CATCHBASIN FRAME AND COVER
- 14. INSTALL NEW CAST IRON RISER RING
- 15. INSTALL NEW CURB AND GUTTER FRAME AND COVER
- 16. REMOVE EXISTING CATCHBASIN

APEGM
 Certificate of Authorization
 Earth Tech Canada Inc.
 No. 730 Expiry: April 30, 2007

METRIC
 WHOLE NUMBERS INDICATE MILLIMETRES
 DECIMALIZED NUMBERS INDICATE METRES

150 mm W.M.	WATERMAIN	150 mm W.M.	HYDRO	PROPOSED	EXISTING	LEGEND - PLAN	PROPOSED	EXISTING	LEGEND - PROFILE	PROPOSED
300mm L.D.S.	LAND DRAINAGE SEWER	300mm L.D.S.	M.T.S.	PROPOSED	EXISTING	LEGEND - PLAN	PROPOSED	EXISTING	LEGEND - PROFILE	PROPOSED
250mm W.W.S.	WASTEWATER SEWER	250mm W.W.S.	CONCRETE	PROPOSED	EXISTING	LEGEND - PLAN	PROPOSED	EXISTING	LEGEND - PROFILE	PROPOSED
	MANHOLE		ASPHALT	PROPOSED	EXISTING	LEGEND - PLAN	PROPOSED	EXISTING	LEGEND - PROFILE	PROPOSED
	CATCH BASIN		PROPERTY LINE	PROPOSED	EXISTING	LEGEND - PLAN	PROPOSED	EXISTING	LEGEND - PROFILE	PROPOSED
	CURB INLET		SURVEY BAR	PROPOSED	EXISTING	LEGEND - PLAN	PROPOSED	EXISTING	LEGEND - PROFILE	PROPOSED
	JUNCTIONS		ELEVATION	PROPOSED	EXISTING	LEGEND - PLAN	PROPOSED	EXISTING	LEGEND - PROFILE	PROPOSED
	CULVERT		TREE	PROPOSED	EXISTING	LEGEND - PLAN	PROPOSED	EXISTING	LEGEND - PROFILE	PROPOSED
	GAS		SIDEWALK RAMP	PROPOSED	EXISTING	LEGEND - PLAN	PROPOSED	EXISTING	LEGEND - PROFILE	PROPOSED
			CONCRETE SIDEWALK	PROPOSED	EXISTING	LEGEND - PLAN	PROPOSED	EXISTING	LEGEND - PROFILE	PROPOSED
			FENCE	PROPOSED	EXISTING	LEGEND - PLAN	PROPOSED	EXISTING	LEGEND - PROFILE	PROPOSED

LOCATION APPROVED UNDERGROUND STRUCTURES

SUPV. U/G STRUCTURES DATE COMMITTEE

NOTE:
 LOCATION OF UNDERGROUND STRUCTURES AS SHOWN ARE BASED ON THE BEST INFORMATION AVAILABLE, BUT NO GUARANTEE IS GIVEN THAT ALL EXISTING UTILITIES ARE SHOWN OR THAT THE GIVEN LOCATIONS ARE EXACT. CONFIRMATION OF EXISTENCE AND EXACT LOCATION OF ALL SERVICES MUST BE OBTAINED FROM THE INDIVIDUAL UTILITIES BEFORE PROCEEDING WITH CONSTRUCTION.

B.M. 52-006	ELEV. 232.631	Tab. in W. Conc. foundation of No. 750 Pembina Hwy, opposite Taylor Ave. 0.5 m N. of S.W. Cor.
0	ISSUED FOR TENDER	FEB 27/07 KWR
A	ISSUED FOR REVIEW	JAN 31/07 KWR
NO.	REVISIONS	DATE BY

EarthTech
 A Tyco International Ltd. Company

DESIGNED BY: RC CHECKED BY: KWR
 DRAWN BY: RC APPROVED BY:
 HOR. SCALE: 1:250
 VERTICAL: 1:10
 RELEASED FOR CONSTRUCTION BY:
 DATE: 2007/01/31

ENGINEER'S SEAL
 PROVINCE OF MANITOBA
 ORIGINAL SIGNED
 K.W.
 FEB 27/07
 REGISTERED PROFESSIONAL ENGINEER

THE CITY OF WINNIPEG
 PUBLIC WORKS DEPARTMENT
 TRANSPORTATION ENGINEERING DIVISION

PEMBINA HIGHWAY (NORTHBOUND)
 STAFFORD STREET TO GRANT AVENUE
 CONCRETE REPAIRS AND ASPHALT RESURFACING

CITY DRAWING NUMBER: P-3274-7
 SHEET 7 OF 13

PLAN/PROFILE
 STA. 8+45 TO STA. 9+95