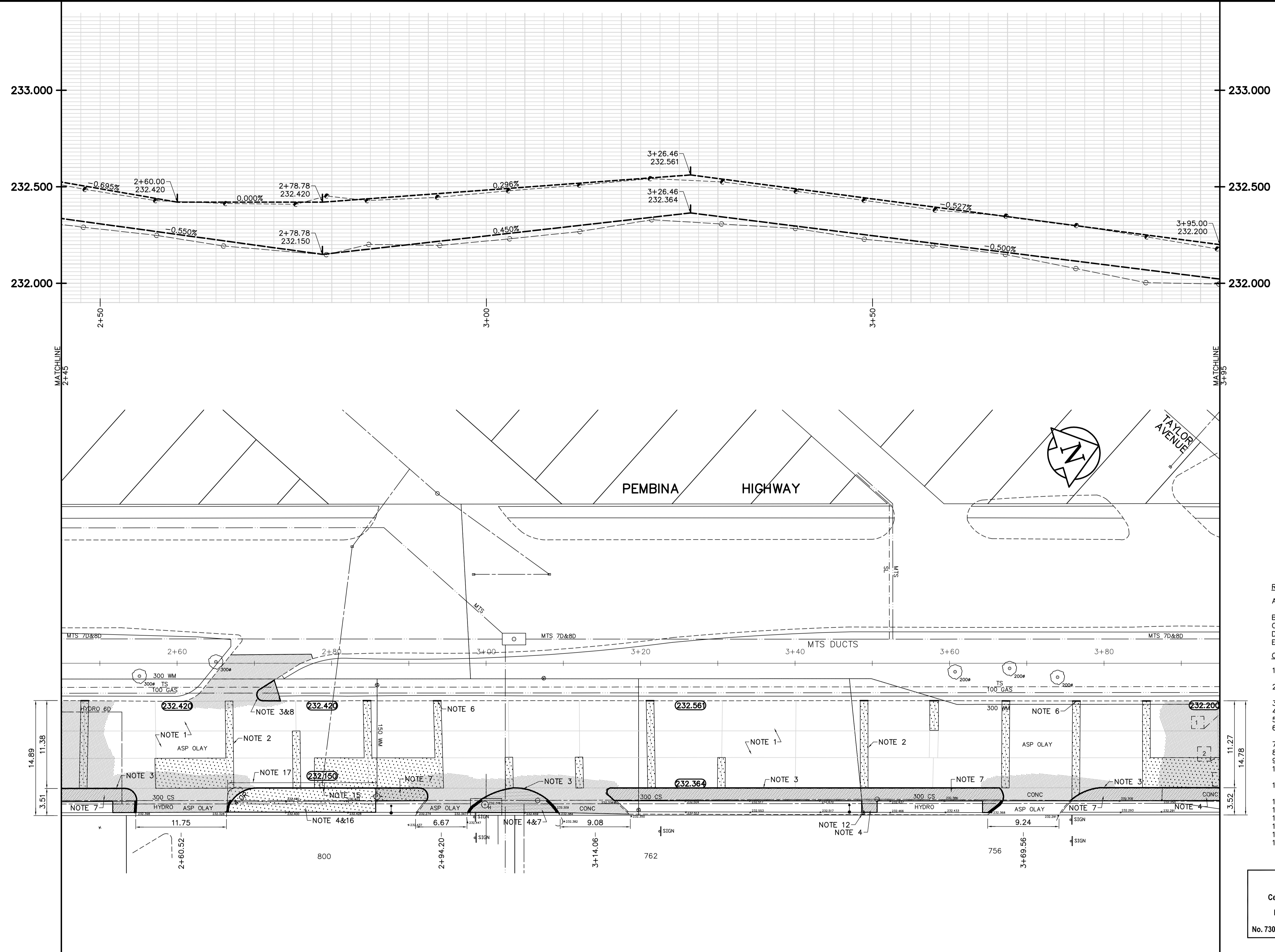


KEY PLAN



REFERENCE NOTES

- A. BASELINE IS CENTRED BETWEEN SOUTHBOUND MEDIAN AND GUTTER BACK OF CURB LINES.
- B. LEGAL PLAN - L.B.I.S.
- C. ADD 200.000 TO OBTAIN GEODETIC DATUM.
- D. PAVEMENT DIMENSIONS ARE TO BACK OF CURB.
- E. EARTH TECH FIELD BOOK NO. 4528.

CONSTRUCTION NOTES

1. PLANE EXISTING OVERLAY AND CONSTRUCT NEW ASPHALTIC CONCRETE OVERLAY
2. CONSTRUCT NEW 230mm PLAIN DOWELLED CONCRETE PAVEMENT c/w ASPHALTIC CONCRETE OVERLAY
3. REMOVE EXISTING CONCRETE BARRIER CURB
4. REMOVE EXISTING PRECAST SIDEWALK BLOCK
5. REMOVE EXISTING PRECAST SIDEWALK BLOCK
6. RENEW CONCRETE BARRIER CURB AND ADJUST EXISTING PRECAST SIDEWALK BLOCK
7. CONSTRUCT NEW MONOLITHIC CONCRETE CURB AND SIDEWALK
8. CONSTRUCT NEW MONOLITHIC CONCRETE BULLNOSE
9. ABANDON EXISTING DRAINAGE INLET
10. INSTALL NEW CURB AND GUTTER FRAME INLET c/w CATCHPIT (SD-023) AND CONNECT TO EXISTING CATCHBASIN
11. INSTALL NEW CURB AND GUTTER FRAME INLET c/w CATCHBASIN (SD-024) AND CONNECT TO EXISTING CATCHBASIN LEAD
12. ADJUST EXISTING WATER VALVE TO GRADE
13. ADJUST EXISTING MANHOLE/CATCHBASIN FRAME AND COVER
14. INSTALL NEW CAST IRON RISER RING
15. INSTALL NEW CURB AND GUTTER FRAME AND COVER
16. CONSTRUCT NEW 200mm REINFORCED PAVEMENT
17. CONSTRUCT NEW MOUNTABLE CURB

**APEGM**  
 Certificate of Authorization  
 Earth Tech Canada Inc.  
 No. 730 Expiry: April 30, 2007

METRIC  
 WHOLE NUMBERS INDICATE MILLIMETRES  
 DECIMALIZED NUMBERS INDICATE METRES

150 mm W.M.	WATERMAIN	150 mm W.M.	HYDRO	— — — — —	⊗	PROFILE
⊕	HYDRANT	⊕	M.T.S.	— — — — —	⊗	WEST MEDIAN GUTTER
⊖	VALVE	⊖	CONCRETE	— — — — —	⊗	EAST MEDIAN GUTTER
⊙	LAND DRAINAGE SEWER	⊙	ASPHALT	— — — — —	⊗	WEST GUTTER
⊚	WASTEWATER SEWER	⊚	PROPERTY LINE	— — — — —	⊗	EAST GUTTER
○	MANHOLE	○	SURVEY BAR	— — — — —	⊗	
□	CATCH BASIN	□	ELEVATION	(32.750)	⊗	
▽	CURB INLET	▽	TREE	— — — — —	⊗	
+	JUNCTIONS	+	SIDEWALK RAMP	— — — — —	⊗	
— — — — —	CULVERT	— — — — —	CONCRETE SIDEWALK	— — — — —	⊗	
— — — — —	GAS	— — — — —	FENCE	— — — — —	⊗	
EXISTING	LEGEND - PLAN	PROPOSED	EXISTING	LEGEND - PLAN	PROPOSED	EXISTING
— — — — —	LEGEND - PROFILE	PROPOSED	— — — — —	LEGEND - PROFILE	PROPOSED	— — — — —

**LOCATION APPROVED UNDERGROUND STRUCTURES**

SUPV. U/G STRUCTURES DATE COMMITTEE

**NOTE:**  
 LOCATION OF UNDERGROUND STRUCTURES AS SHOWN ARE BASED ON THE BEST INFORMATION AVAILABLE, BUT NO GUARANTEE IS GIVEN THAT ALL EXISTING UTILITIES ARE SHOWN OR THAT THE GIVEN LOCATIONS ARE EXACT. CONFIRMATION OF EXISTENCE AND EXACT LOCATION OF ALL SERVICES MUST BE OBTAINED FROM THE INDIVIDUAL UTILITIES BEFORE PROCEEDING WITH CONSTRUCTION.

B.M. 52-006	Tab. in W. Conc. foundation of No. 750		
ELEV. 232.631	Pembina Hwy, opposite Taylor Ave., 0.5 m N. of S.W. Cor.		
NO.	REVISIONS	DATE	BY
0	ISSUED FOR TENDER	FEB 27/07	KWR
A	ISSUED FOR REVIEW	JAN 31/07	KWR

**EarthTech**  
 A Tyco International Ltd. Company

DESIGNED BY: RC  
 CHECKED BY: KWR

DRAWN BY: RC  
 APPROVED BY:

HOR. SCALE: 1:250  
 VERTICAL: 1:10

RELEASED FOR CONSTRUCTION BY:

DATE: 2007/01/31

ENGINEER'S SEAL

PROVINCE OF MANITOBA  
 ORIGINAL SIGNED  
 K.W.  
 RAJ  
 FEB 27/07  
 REGISTERED PROFESSIONAL ENGINEER

CONSULTANT DRAWING NO. CT03

**THE CITY OF WINNIPEG**  
 PUBLIC WORKS DEPARTMENT  
 TRANSPORTATION ENGINEERING DIVISION

**PEMBINA HIGHWAY (NORTHBOUND)**  
 STAFFORD STREET TO GRANT AVENUE  
 CONCRETE REPAIRS AND ASPHALT RESURFACING

CITY DRAWING NUMBER P-3274-3  
 SHEET 3 OF 13

PLAN/PROFILE  
 STA. 2+45 TO STA. 3+95