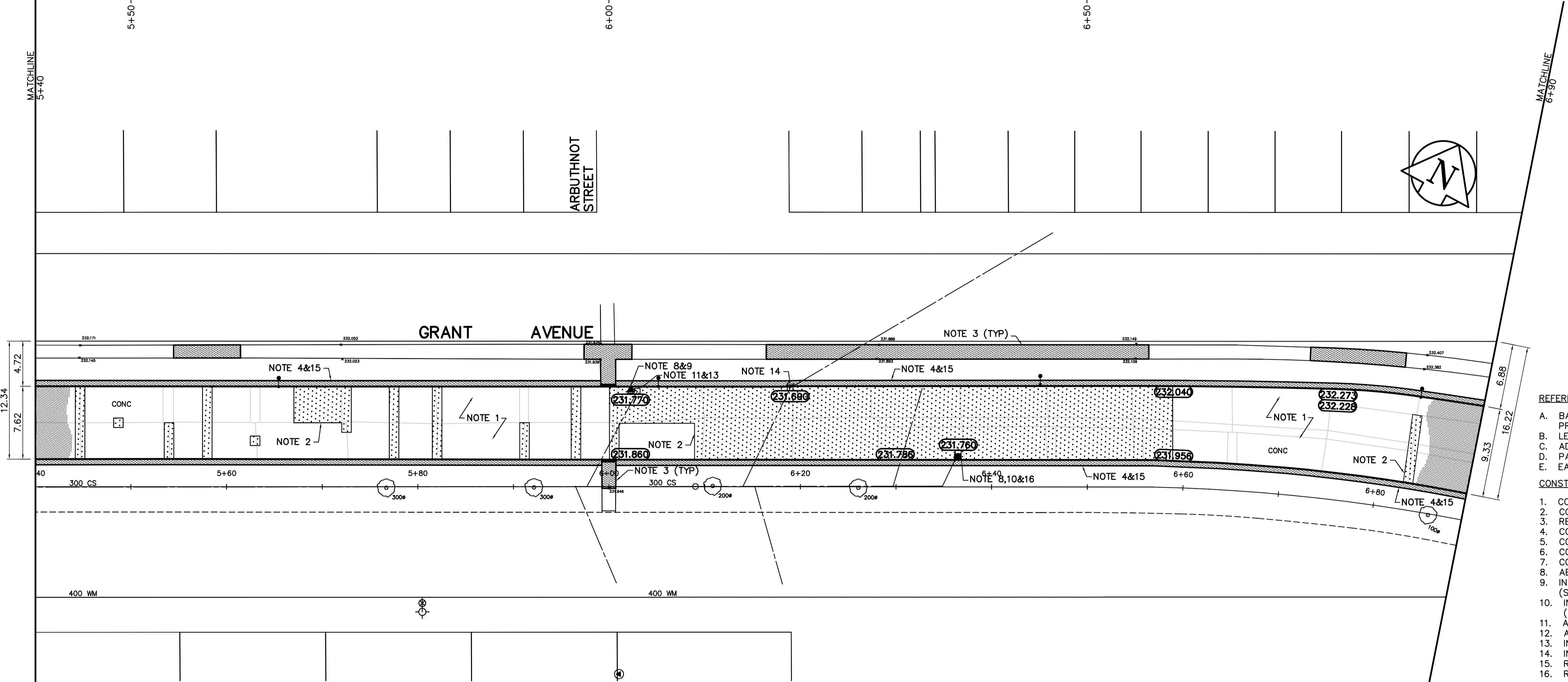


KEY PLAN



- REFERENCE NOTES**
- BASELINE IS CENTRED BETWEEN NORTH AND SOUTH PROPERTY LINES
  - LEGAL PLAN - L.B.I.S.
  - ADD 200,000 TO OBTAIN GEODETIC DATUM
  - PAVEMENT DIMENSIONS ARE TO BACK OF CURB
  - EARTH TECH FIELD BOOK NO. 4528
- CONSTRUCTION NOTES**
- CONSTRUCT NEW ASPHALTIC CONCRETE OVERLAY
  - CONSTRUCT NEW 230mm PLAIN DOWELLED CONCRETE
  - RENEW EXISTING CONCRETE SIDEWALK
  - CONSTRUCT NEW MONOLITHIC SPLASH STRIP
  - CONSTRUCT NEW MODIFIED MONOLITHIC SPLASH STRIP
  - CONSTRUCT NEW MONOLITHIC CONCRETE MEDIAN SLAB
  - CONSTRUCT NEW CONCRETE MEDIAN SLAB
  - ABANDON EXISTING DRAINAGE INLET
  - INSTALL NEW CURB AND GUTTER INLET c/w CATCHPIT (SD-023) AND CONNECT TO EXISTING CATCHBASIN
  - INSTALL NEW CURB AND GUTTER INLET c/w CATCHBASIN (SD-024) AND CONNECT NEW 250mm LEAD TO EXISTING LEAD
  - ADJUST EXISTING CATCHBASIN FRAME AND COVER
  - ADJUST EXISTING MANHOLE FRAME AND COVER
  - INSTALL NEW CAST IRON RISER RING
  - INSTALL NEW CURB AND GUTTER INLET FRAME AND COVER
  - REMOVE EXISTING BARRIER CURB
  - REMOVE EXISTING CATCHBASIN

**APEGM**  
 Certificate of Authorization  
 Earth Tech Canada Inc.  
 No. 730 Expiry: April 30, 2007

**METRIC**  
 WHOLE NUMBERS INDICATE MILLIMETRES  
 DECIMALIZED NUMBERS INDICATE METRES

150 mm W.M.	WATERMAIN	150 mm W.M.	HYDRO	— — — — —	— — — — —	— — — — —	— — — — —	— — — — —	— — — — —
◇	HYDRANT	+	M.T.S.	— — — — —	— — — — —	— — — — —	— — — — —	— — — — —	— — — — —
⊙	VALVE	⊙	CONCRETE	— — — — —	— — — — —	— — — — —	— — — — —	— — — — —	— — — — —
⊕	LAND DRAINAGE SEWER	⊕	ASPHALT	— — — — —	— — — — —	— — — — —	— — — — —	— — — — —	— — — — —
⊖	WASTEWATER SEWER	⊖	PROPERTY LINE	— — — — —	— — — — —	— — — — —	— — — — —	— — — — —	— — — — —
○	MANHOLE	○	SURVEY BAR	— — — — —	— — — — —	— — — — —	— — — — —	— — — — —	— — — — —
□	CATCH BASIN	□	ELEVATION	(32.750)	— — — — —	— — — — —	— — — — —	— — — — —	— — — — —
▽	CURB INLET	▽	TREE	— — — — —	— — — — —	— — — — —	— — — — —	— — — — —	— — — — —
— — — — —	JUNCTIONS	— — — — —	SIDEWALK RAMP	— — — — —	— — — — —	— — — — —	— — — — —	— — — — —	— — — — —
— — — — —	CULVERT	— — — — —	CONCRETE SIDEWALK	— — — — —	— — — — —	— — — — —	— — — — —	— — — — —	— — — — —
— — — — —	GAS	— — — — —	FENCE	— — — — —	— — — — —	— — — — —	— — — — —	— — — — —	— — — — —
— — — — —	EXISTING	— — — — —	LEGEND - PLAN	PROPOSED	EXISTING	LEGEND - PROFILE	PROPOSED	EXISTING	LEGEND - PROFILE

**LOCATION APPROVED UNDERGROUND STRUCTURES**

SUPV. U/G STRUCTURES DATE COMMITTEE

**NOTE:**  
 LOCATION OF UNDERGROUND STRUCTURES AS SHOWN ARE BASED ON THE BEST INFORMATION AVAILABLE, BUT NO GUARANTEE IS GIVEN THAT ALL EXISTING UTILITIES ARE SHOWN OR THAT THE GIVEN LOCATIONS ARE EXACT. CONFIRMATION OF EXISTENCE AND EXACT LOCATION OF ALL SERVICES MUST BE OBTAINED FROM THE INDIVIDUAL UTILITIES BEFORE PROCEEDING WITH CONSTRUCTION.

B.M. 52-005 7.6m Conc. Pile, 7 m N. of N. curb along Grant Ave. & 5.2 m W. of line of E.L. of Cookburn St. N.

0	ISSUED FOR TENDER	FEB 27/07	KWR
A	ISSUED FOR REVIEW	JAN 31/07	KWR
NO.	REVISIONS	DATE	BY

**EarthTech**  
 A Tyco International Ltd. Company

DESIGNED BY	RC	CHECKED BY	KWR
DRAWN BY	RC	APPROVED BY	
HOR. SCALE:	1:250	RELEASED FOR CONSTRUCTION BY:	
VERTICAL:	1:10	DATE	2007/01/31

ENGINEER'S SEAL  
 PROVINCE OF MANITOBA  
 ORIGINAL SIGNED  
 K.W. RAE  
 FEB 27/07  
 REGISTERED PROFESSIONAL ENGINEER

**THE CITY OF WINNIPEG**  
 PUBLIC WORKS DEPARTMENT  
 TRANSPORTATION ENGINEERING DIVISION

**GRANT AVENUE (WESTBOUND)**  
**PEMBINA HIGHWAY TO STAFFORD STREET**  
**CONCRETE REPAIRS AND ASPHALT OVERLAY**

CITY DRAWING NUMBER P-3274-12  
 SHEET 12 OF 13

PLAN/PROFILE  
 STA. 5+40 TO STA. 6+90

CONSULTANT DRAWING NO. CT12