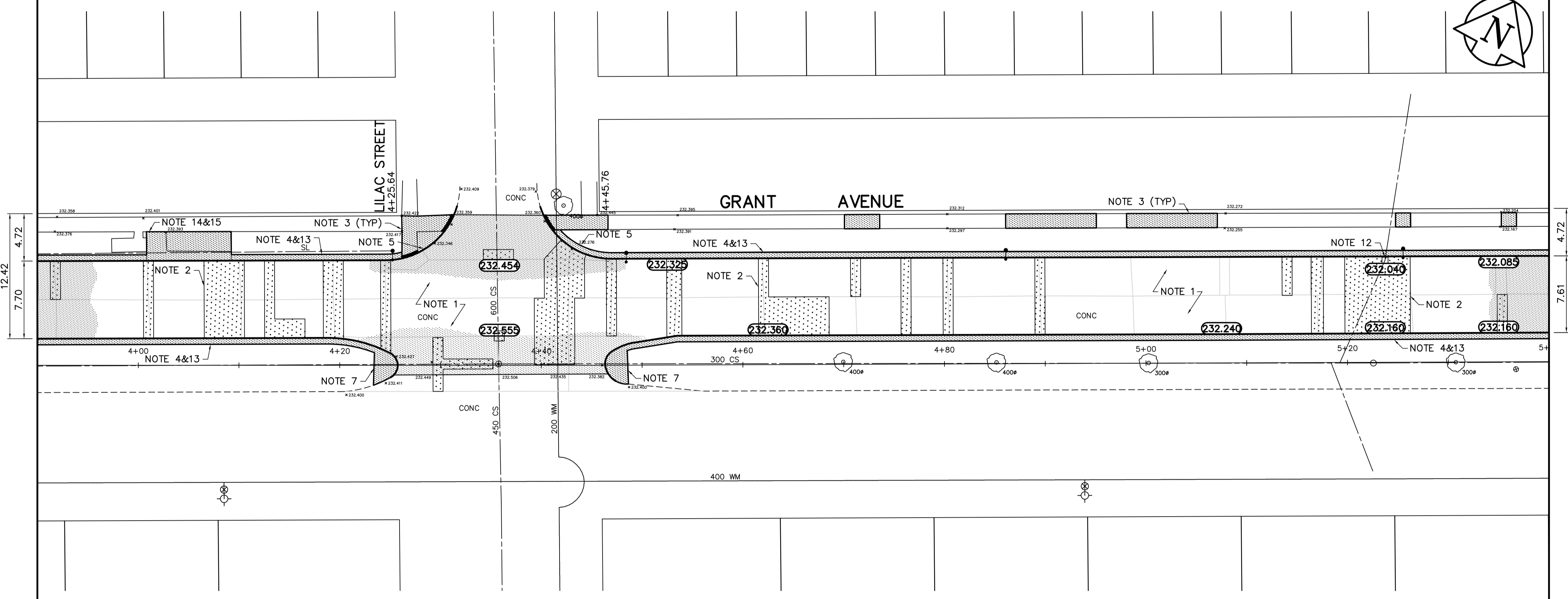


KEY PLAN



- REFERENCE NOTES**
- BASILINE IS CENTRED BETWEEN NORTH AND SOUTH PROPERTY LINES
 - LEGAL PLAN - L.B.I.S.
 - ADD 200.000 TO OBTAIN GEODETIC DATUM
 - PAVEMENT DIMENSIONS ARE TO BACK OF CURB
 - EARTH TECH FIELD BOOK NO. 4528
- CONSTRUCTION NOTES**
- CONSTRUCT NEW ASPHALTIC CONCRETE OVERLAY
 - CONSTRUCT NEW 230mm PLAIN DOWELLED CONCRETE
 - RENEW EXISTING CONCRETE SIDEWALK
 - CONSTRUCT NEW MONOLITHIC SPLASH STRIP
 - CONSTRUCT NEW MODIFIED MONOLITHIC SPLASH STRIP
 - CONSTRUCT NEW MONOLITHIC CONCRETE MEDIAN SLAB
 - CONSTRUCT NEW CONCRETE MEDIAN SLAB
 - ABANDON EXISTING DRAINAGE INLET
 - INSTALL NEW CURB AND GUTTER INLET c/w CATCHPIT (SD-023) AND CONNECT TO EXISTING CATCHBASIN
 - INSTALL NEW CURB AND GUTTER INLET c/w CATCHBASIN (SD-024) AND CONNECT NEW 250mm LEAD TO EXISTING LEAD
 - ADJUST EXISTING CATCHBASIN FRAME AND COVER
 - INSTALL NEW CURB AND GUTTER INLET FRAME AND COVER
 - REMOVE EXISTING BARRIER CURB
 - REMOVE EXISTING PRECAST SIDEWALK BLOCKS
 - CONSTRUCT NEW CONCRETE SIDEWALK

APEGM
 Certificate of Authorization
 Earth Tech Canada Inc.
 No. 730 Expiry: April 30, 2007

METRIC
 WHOLE NUMBERS INDICATE MILLIMETRES
 DECIMALIZED NUMBERS INDICATE METRES

150 mm W.M.	WATERMAIN	150 mm W.M.	HYDRO	CONC	CONCRETE	ASPHALT	PROPERTY LINE	SURVEY BAR	ELEVATION	TREE	SIDEWALK RAMP	CONCRETE SIDEWALK	FENCE
Hydrant	Valve	300mm L.D.S.	WASTEWATER SEWER	250mm W.W.S.	Manhole	Catch Basin	Curb Inlet	Junctions	Culvert	Gas	Existing	Legend - Plan	Proposed
Hydrant	Valve	300mm L.D.S.	WASTEWATER SEWER	250mm W.W.S.	Manhole	Catch Basin	Curb Inlet	Junctions	Culvert	Gas	Existing	Legend - Profile	Proposed

LOCATION APPROVED UNDERGROUND STRUCTURES

SUPV. U/G STRUCTURES DATE COMMITTEE

NOTE:
 LOCATION OF UNDERGROUND STRUCTURES AS SHOWN ARE BASED ON THE BEST INFORMATION AVAILABLE, BUT NO GUARANTEE IS GIVEN THAT ALL EXISTING UTILITIES ARE SHOWN OR THAT THE GIVEN LOCATIONS ARE EXACT. CONFIRMATION OF EXISTENCE AND EXACT LOCATION OF ALL SERVICES MUST BE OBTAINED FROM THE INDIVIDUAL UTILITIES BEFORE PROCEEDING WITH CONSTRUCTION.

B.M. 52-005	ELEV. 232.337	7.6m Conc. Pile, 7 m N. of N. curb along Grant Ave. & 8.2 m W. of line of E.L. of Cookburn St. N.	
NO.	REVISIONS	DATE	BY
0	ISSUED FOR TENDER	FEB 27/07	KWR
A	ISSUED FOR REVIEW	JAN 31/07	KWR

EarthTech
 A Tyco International Ltd. Company

DESIGNED BY: RC
 CHECKED BY: KWR

DRAWN BY: RC
 APPROVED BY:

HOR. SCALE: 1:250
 VERTICAL: 1:10

RELEASED FOR CONSTRUCTION BY:

DATE: 2007/01/31

ENGINEER'S SEAL
 PROVINCE OF MANITOBA
 ORIGINAL SIGNED
 K.W. RAE
 FEB 27/07
 REGISTERED PROFESSIONAL ENGINEER

THE CITY OF WINNIPEG
 PUBLIC WORKS DEPARTMENT
 TRANSPORTATION ENGINEERING DIVISION

GRANT AVENUE (WESTBOUND)
 PEMBINA HIGHWAY TO STAFFORD STREET
 CONCRETE REPAIRS AND ASPHALT OVERLAY

CITY DRAWING NUMBER: P-3274-11
 SHEET 11 OF 13

PLAN/PROFILE
 STA. 3+90 TO STA. 5+40