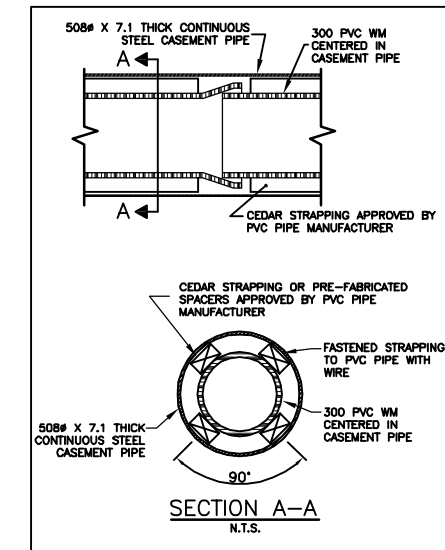


WATER SERVICE INFORMATION

ADDRESS	SIZE(mm) & TYPE (STREET)	SIZE(mm) & TYPE (PROP)	SHORT & LONG MEASUREMENT	CORP. LOCATION	REMARKS
1410 LOGAN AVE COMMERCIAL	150 PVC	150 PVC	SAME AS LONG MEAS. 34.29 EEL OF QUELCH	OPP VALVE	NEW 4" HUB INSTALLED 18" INSIDE GATES, REMOVED OLD VALVE, WTR RENEW AND LOP REPAIRED DEC10/04
1413 LOGAN AVE RESIDENTIAL	16 LEAD	12 LEAD	1.18 WEL OF HSE #1413 73.46 EEL OF QUELCH	0.91 E OF S/C	DBLE SERV WITH #1413
1415 LOGAN AVE RESIDENTIAL	16 LEAD	12 LEAD	1.16 WEL OF HSE #1413 73.46 EEL OF QUELCH	0.91 E OF S/C	DBLE SERV WITH #1413
1419 LOGAN AVE RESIDENTIAL	20 LEAD	12 LEAD	3.35 WEL OF HOUSE	OPP S/C	
1423 LOGAN AVE RESIDENTIAL	20 LEAD	12 LEAD	0.15 EWL OF HOUSE	1.83 W OF S/C	
1427 LOGAN AVE RESIDENTIAL	20 COPPER LEAD	12 LEAD	40.11 EEL OF QUELCH	6.40 E OF S/C	
1429 LOGAN AVE RESIDENTIAL	20 COPPER LEAD	12 LEAD	1.52 WEL OF HOUSE	0.61 W OF S/C	
1429 LOGAN AVE COMMERCIAL	20 COPPER LEAD	20 COPPER	1.83 WEL OF BLDG 29.42 EEL OF QUELCH	0.61 W OF S/C	
1435 LOGAN AVE COMMERCIAL	25 COPPER	20 COPPER	4.60 N OF HYD NE COR 5.88 NNL LOGAN	0.11 N OF S/C	SERVICED FROM QUELCH
1438 LOGAN AVE RESIDENTIAL	25 LEAD	25 LEAD	1.77 WEL OF BLDG 1.77 WEL OF QUELCH	2.74 WML QUELCH	1438-1440 LOGAN ALSO 206-210 QUELCH 9 SUITES
1444 LOGAN AVE RESIDENTIAL	12 LEAD	12 LEAD	2.01 WEL OF BLDG 13.41 WML OF QUELCH	0.46 W OF S/C	3/4 CU CPLG 0.31 N OF S/C
1447 LOGAN AVE RESIDENTIAL	20 LEAD	20 LEAD	3.48 EWL OF BLDG	0.91 E OF S/C	AUG04/05 MTR WAS ALREADY BURST WHEN P/U
1450 LOGAN AVE RESIDENTIAL	20 COPPER LEAD	20 COPPER	3.38 WEL OF BLDG 6.19 WEL OF PROPERTY	0.61 E OF S/C	
1451 LOGAN AVE RESIDENTIAL	20 COPPER LEAD	12 COPPER	0.46 EWL OF HOUSE	0.61 E OF S/C	
1452 LOGAN AVE RESIDENTIAL	25 COPPER LEAD	25 COPPER	47.85 WML OF QUELCH	0.91 E OF S/C	SEWER AT BLDG 5.5' EWL
1452 LOGAN AVE COMMERCIAL	25 COPPER	25 COPPER	1.98 EWL OF BLDG 45.26 WML OF QUELCH	0.91 E OF S/C	

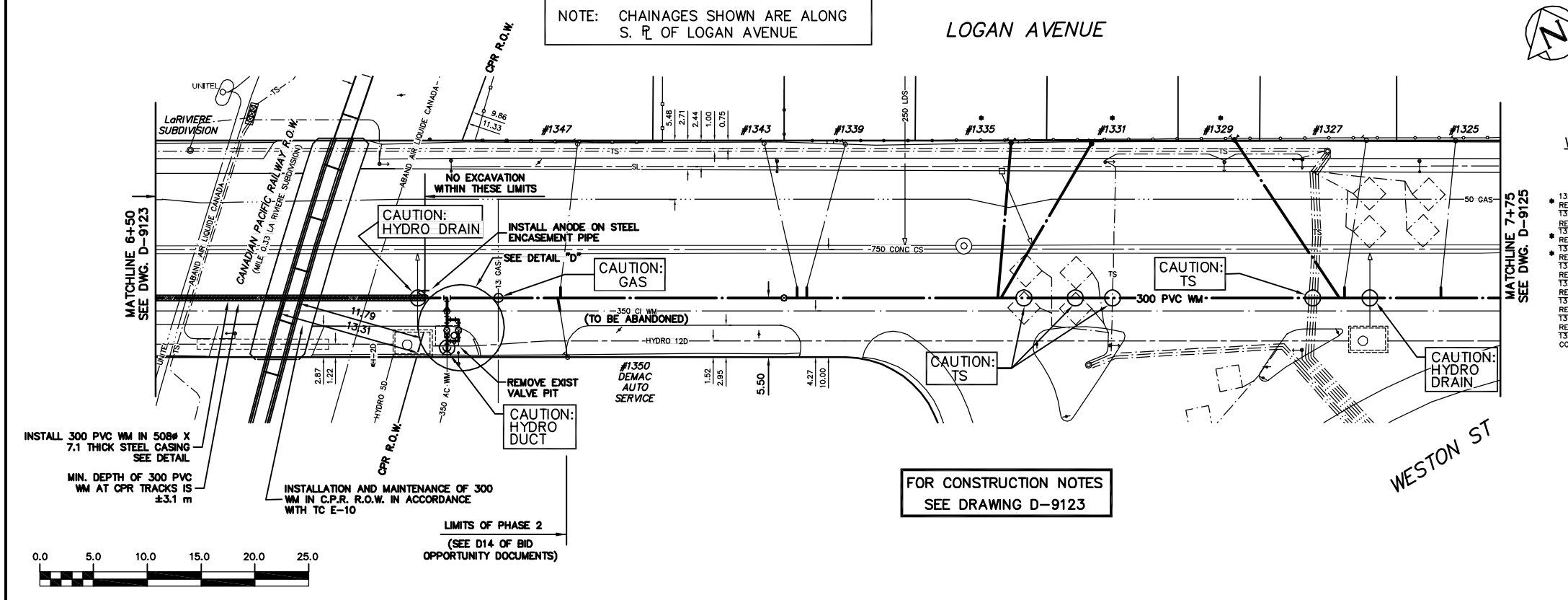
* SERVICES TO BE RENEWED TO R ALL OTHERS TO BE RECONNECTED



CASEMENT DETAIL N.T.S.

NOTE: CHAINAGES SHOWN ARE ALONG S. R. OF LOGAN AVENUE

LOGAN AVENUE



WATER SERVICE INFORMATION

ADDRESS	SIZE(mm) & TYPE (STREET)	SIZE(mm) & TYPE (PROP)	SHORT & LONG MEASUREMENT	CORP. LOCATION	REMARKS
1325 LOGAN AVE RESIDENTIAL	20 COPPER LEAD	12 COPPER LEAD	2.74 EWL OF HOUSE 57.91 WML OF ELECTA	0.91 W OF S/C	
1327 LOGAN AVE RESIDENTIAL	20 COPPER LEAD	12 COPPER LEAD	0.81 WEL OF HOUSE 66.45 WML OF ELECTA	OPP S/C	
1329 LOGAN AVE RESIDENTIAL	12 LEAD	12 LEAD	2.07 WEL OF BLDG 2.38 WEL OF PROPERTY	OPP S/C	FEB/06-RENEWED SERVICE BOX
1331 LOGAN AVE RESIDENTIAL	20 COPPER LEAD	12 COPPER LEAD	2.07 EWL OF HOUSE 92.14 WML OF ELECTA	2.59 W OF S/C	CPLG 0.61 IN ON PROPERTY
1335 LOGAN AVE RESIDENTIAL	20 COPPER LEAD	12 COPPER LEAD	1.22 WEL OF HOUSE 99.70 WML OF ELECTA	4.11 E OF S/C	
1339 LOGAN AVE RESIDENTIAL	20 COPPER LEAD	12 COPPER LEAD	3.47 EWL OF HOUSE 78.03 EEL OF VINE	3.66 W OF S/C	
1343 LOGAN AVE RESIDENTIAL	20 COPPER LEAD	12 COPPER LEAD	0.46 WEL OF HOUSE 70.41 EEL OF VINE	3.20 E OF S/C	FEB2/03 LOP WTR LEFT OFF UNTIL REPAIRS HAVE BEEN COMPLETED/DAMAGE BEING CAUSED
1347 LOGAN AVE RESIDENTIAL	20 COPPER LEAD	12 COPPER LEAD	1.89 EWL OF HOUSE 53.07 EEL OF VINE	1.52 W OF S/C	
1350 LOGAN AVE COMMERCIAL	25 COPPER	20 COPPER	5.03 EWL OF BLDG 7.47 WEL OF BLDG	0.91 W OF S/C	MAIN TAPPED OPP SIDE CPLG 0.31 INSIDE S/C

* SERVICES TO BE RENEWED TO R ALL OTHERS TO BE RECONNECTED

WARNING

IF POWER EQUIPMENT OR EXPLOSIVES ARE TO BE USED FOR EXCAVATION ON THIS PROJECT THE CONTRACTOR MUST:

- 1) NOTIFY THE GAS COMPANY OF THE PROPOSED LOCATION OF EXCAVATION.
- 2) TAKE PRECAUTION TO AVOID DAMAGE TO GAS COMPANY INSTALLATIONS.

SEE PROVINCIAL REGULATION 210/72 FOR DETAILS

200 WM	WATERMAIN	200 WM	SL, HYDRO	150 WM	WATERMAIN	150 WM
⊕	HYDRANT	⊕	MTS	⊕	HYDRANT	⊕
⊙	VALVE	⊙	TRAFFIC SIGNALS	⊙	VALVE	⊙
525 LDS	LAND DRAINAGE SEWER	525 LDS	GAS	50 GAS	300 LDS	300 LDS
375 WWS	WASTEWATER SEWER	375 WWS	SURVEY BAR	250 WWS	WASTEWATER SEWER	250 WWS
○	MANHOLE	●	FENCE	⊕	PROFILE	⊕
□	CATCH BASIN	■	POLE - HYDRO, MTS	⊕	GROUND ABOVE PIPE	⊕
▽	CURB INLET	◊	CURB STOP	⊕	? DITCH (NORTH & WEST)	⊕
∇	REDUCER	◊	GUY ANCHOR	⊕	? DITCH (SOUTH & EAST)	⊕
⊗	COUPLER	⊗	LIGHT STANDARD	⊕	GUTTER (NORTH & WEST)	⊕
⊕	ANODE	⊕	TREE	⊕	GUTTER (SOUTH & EAST)	⊕
---	EXISTING	---	LEGEND-PLAN	---	LEGEND-PROFILE	---
---	PROPOSED	---	EXISTING	---	PROPOSED	---

LOCATION APPROVED UNDERGROUND STRUCTURES

SUPV. U/G STRUCTURES COMMITTEE DATE

NOTE: LOCATION OF UNDERGROUND STRUCTURES AS SHOWN ARE BASED ON THE BEST INFORMATION AVAILABLE BUT NO GUARANTEE IS GIVEN THAT ALL EXISTING UTILITIES ARE SHOWN OR THAT THE GIVEN LOCATIONS ARE EXACT. CONFIRMATION OF EXISTENCE AND EXACT LOCATION OF ALL SERVICES MUST BE OBTAINED FROM THE INDIVIDUAL UTILITIES BEFORE PROCEEDING WITH CONSTRUCTION.

B.M. ELEV. FIELD BOOK #

POSTED TO LBIS

CITY OF WINNIPEG WATER AND WASTE ENGINEERING DIVISION

DESIGNED BY: SC CHECKED BY: TW

DRAWN BY: PB APPROVED BY: KZ

HOR. SCALE: 1:250 RELEASED FOR CONSTRUCTION

VERTICAL: 1:50 DATE: 2007.02.21

1.) REVISED CASEMENT PIPE LENGTH 07.02.28 SC/WKT

NO. REVISIONS DATE BY

ENGINEER'S SEAL

ORIGINAL SIGNED BY S.R.J. COURNOYER 07/02/28

THE CITY OF WINNIPEG WATER AND WASTE DEPARTMENT

2007 WATERMAIN RENEWALS

LOGAN AVENUE

23 m E OF VINE STREET (STA 6+50) TO WESTON STREET (STA 7+75)

SHEET 5 OF 6

CITY DRAWING NUMBER D-9124

BID OPPORTUNITY: 74-2007

FILENAME: D-9124.dwg

PLOT DATE: 2007 02 28