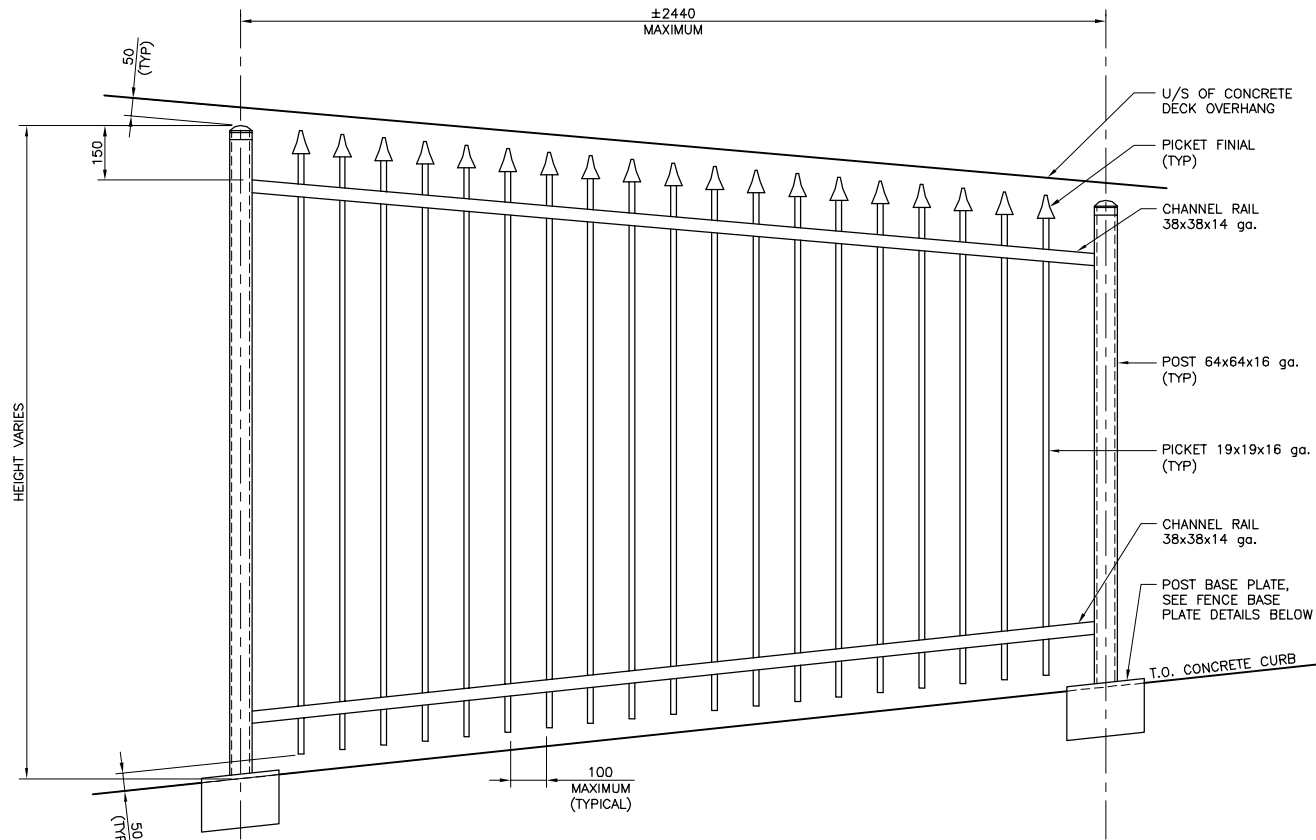


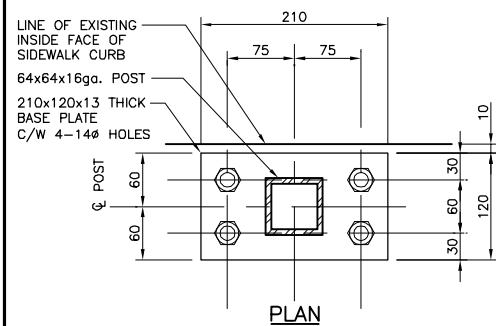
ORNAMENTAL FENCE ELEVATION

1:10

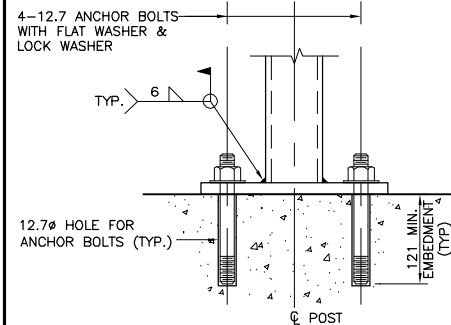


SLOPED ORNAMENTAL FENCE ELEVATION

1:10



PLAN

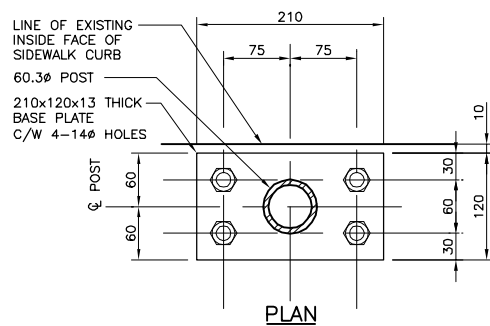


ELEVATION

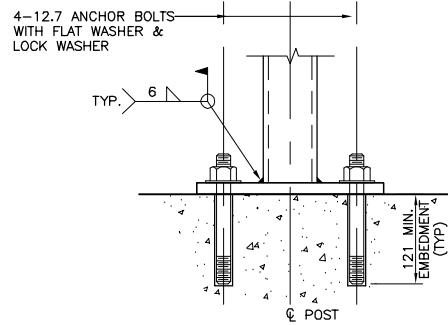
ORNAMENTAL FENCE BASE PLATE

1:4

NOTE: - LOCATED AT EXISTING CONCRETE SIDEWALK SLAB.



PLAN

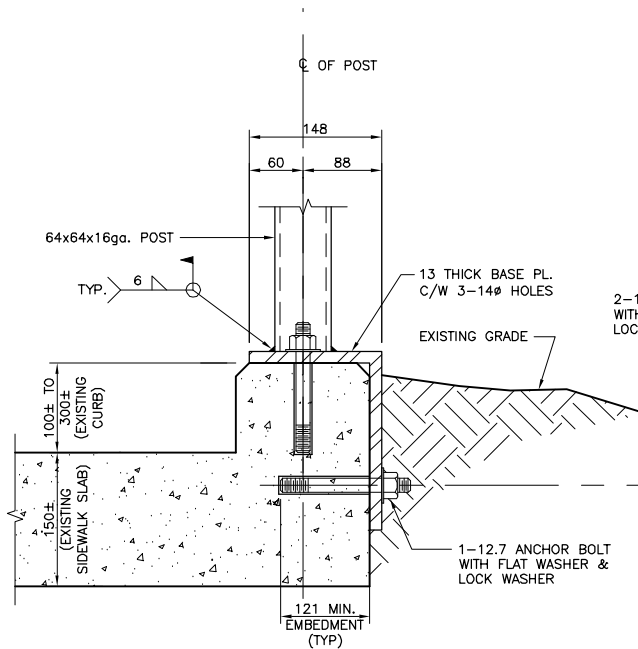


ELEVATION

CHAIN LINK FENCE BASE PLATE

1:4

NOTE: - LOCATED AT EXISTING CONCRETE SIDEWALK SLAB.

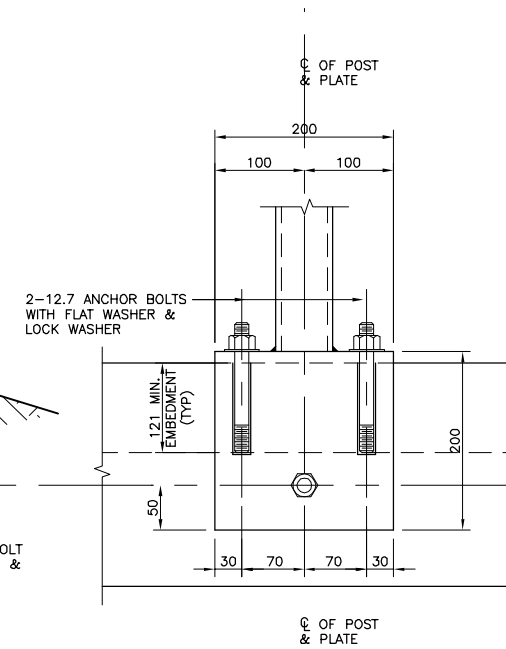


SECTION

ORNAMENTAL CURB BASE PLATE

1:4

NOTE: - LOCATED AT EXISTING CONCRETE CURB.



ELEVATION

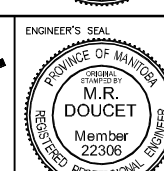
ORNAMENTAL CURB BASE PLATE

1:4

NOTE: - LOCATED AT EXISTING CONCRETE CURB.

GENERAL NOTES:

- ORNAMENTAL FENCING AND GATE:
 - ALL PRIMARY FENCE COMPONENTS, PICKETS, RAILS, AND POSTS, SHALL HAVE A MINIMUM YIELD STRENGTH OF 344 MPA.
 - ALL PRIMARY FENCE COMPONENTS, PICKETS, RAILS, AND POSTS, SHALL BE GALVANIZED BY HOT-DIP PROCESS AND SHALL BE IN ACCORDANCE WITH CSA G164 FOR A MINIMUM RETENTION 276 G/M2 (COATING DESIGNATION G90).
 - GALVANIZED STEEL FENCE COMPONENTS SHALL RECEIVE AN EPOXY PRIMER FOLLOWED BY AN ACRYLIC TOPCOAT. THE CUMULATIVE COATING THICKNESS OF EPOXY AND ACRYLIC SHALL BE MINIMUM 2 MILS AND MAXIMUM 4 MILS.
 - ALL ORNAMENTAL FENCE COMPONENTS SHALL BE BLACK IN COLOUR.
 - CONTRACTOR TO PROVIDE SAMPLE FINIAL PRIOR TO CONSTRUCTION FOR CONTRACT ADMINISTRATOR APPROVAL.
 - AN APPROVED PRODUCT MODIFIED AS SHOWN IS AEGIS PLUS GENESIS ORNAMENTAL FENCE AS MANUFACTURED BY AMERISTAR FENCE PRODUCTS, INC. 1555 NORTH MINGO TULSA, OK 74116.
- DETAIL SHOWING ORNAMENTAL FENCE PANEL AS A LEVEL ELEVATION, FOR INSTALLATIONS THAT FOLLOW SLOPING GRADES, POST AND PICKETS MUST REMAIN VERTICAL. ALL DIMENSIONS MUST BE MEASURED ALONG GRADE.
- ALL POSTS SHALL BE PLUMBED AND SET TO GIVE CORRECT ALIGNMENT. BENDING OF POSTS TO GIVE CORRECT ALIGNMENT IS NOT ACCEPTABLE.
- ALL FENCES TO BE A MAXIMUM 1830 HEIGHT.
- POST SPACING FOR ALL FENCES TO BE MINIMUM 1220 SPACING AND MAXIMUM 2440 SPACING.
- FENCE GATE OPENING TO BE 1220 WITH A 180° SWING.
- ALL MEMBERS TO BE HOT DIP GALVANIZED ACCORDING TO THE SPECIFICATIONS.
- FIELD-APPLY GALVANIZING TO DAMAGED SURFACES AND WELDED AREAS AS PER SPECIFICATIONS.
- ALL ANCHOR BOLTS SHALL BE 12.7 mm. x 121 mm. MIN EMBEDMENT HILTI KWIK BOLT 3 EXPANSION ANCHOR WITH NUT, FLAT WASHER AND LOCK WASHER. ALL TO BE STAINLESS STEEL OR HOT-DIP GALVANIZED.
- SPECIFICATIONS SHALL SUPERSEDE DRAWING NOTES.



2007 BRIDGE MAINTENANCE
ESPLANADE RIEL BRIDGE AT EAST
ABUTMENT

FENCE ELEVATIONS
AND SECTIONS

CITY DRAWING NUMBER
B110-07-02
SHEET 2 OF 2

BID OPP NO.
685-2007

B.M. ELEV.	DESIGNED BY MRD
	DRAWN BY tik
	CHECKED BY ASD
	APPROVED BY
1 ISSUED FOR TENDER 07/09/14 MRD	HOR. SCALE AS NOTED
0 ISSUED FOR CITY REVIEW 07/09/12 tik	VERTICAL
NO. REVISIONS	DATE BY DATE AUGUST 2007

RELEASED FOR CONSTRUCTION
ORIGINAL SIGNED BY B.A. NEIRINCK
DATE

CONSULTANT PROJECT NO.
07-7519-1000

METRIC

WHOLE NUMBERS INDICATE MILLIMETRES
DECIMALIZED NUMBERS INDICATE METRES