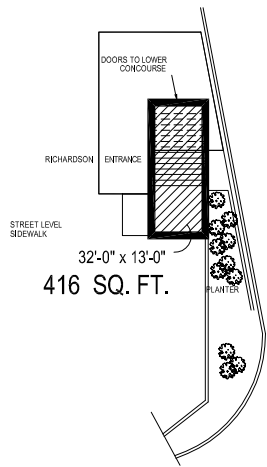


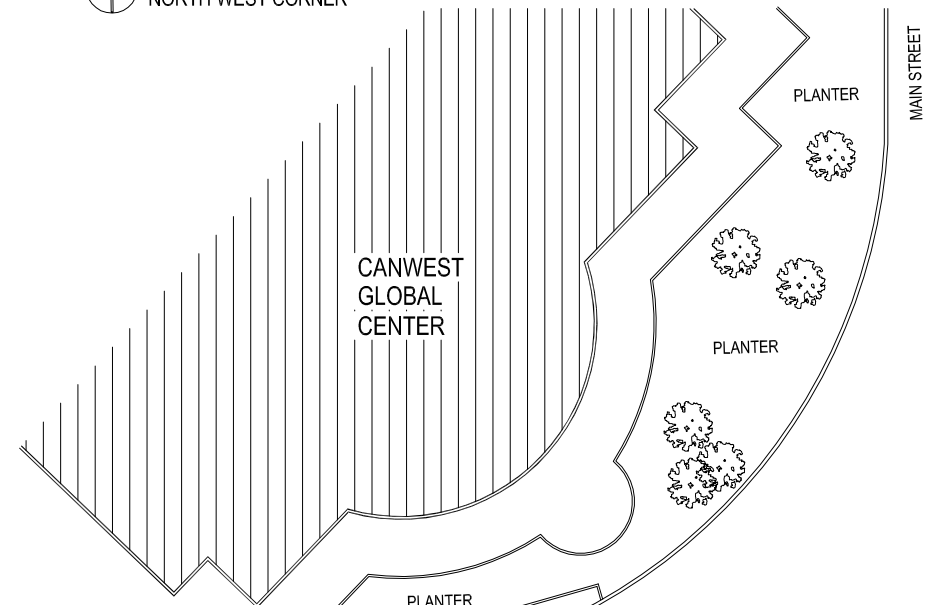
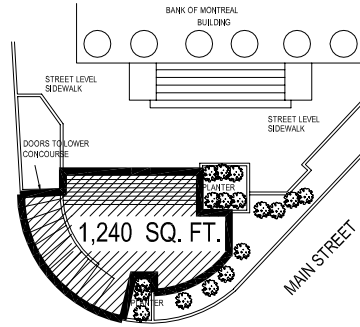
PORTAGE & MAIN
NORTH EAST CORNER

PORTAGE & MAIN
SOUTH EAST CORNER

PORTAGE & MAIN
NORTH WEST CORNER



PORTAGE AVENUE
EAST

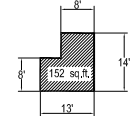


MAIN STREET

STREET LEVEL ENTRANCE
TO CONCOURSE

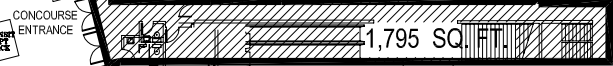
SCOTIABANK

152 SQ. FT.

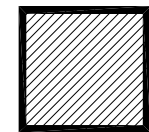


PORTAGE AVENUE - WEST BOUND LANES
PORTAGE AVENUE - EAST BOUND LANES

PORTAGE AVE. WEST



ROYAL BANK



AREA TO BE CLEANED
3,603 SQ.FT.

NO.	REVISION/DESCRIPTION	BY	DATE
SEALS			

 THE CITY OF WINNIPEG
PLANNING, PROPERTY AND
DEVELOPMENT DEPARTMENT
3-65 GARRY STREET
R3C 4K4

DRAWN BY	CHECKED BY	APPROVED
DATE	USER APPROVAL	

PROJECT
STREET LEVEL
PORTAGE & MAIN
CONCOURSE

SHEET TITLE
PARTIAL SITE PLAN
AREAS TO CLEAN

0365MN01

SCALE	PROJECT NO.	SHEET NO.
REFERENCE ONLY NOT TO SCALE		A1

Address: PORTAGE AND MAIN
Description: SNOW REMOVAL SITE PLAN
Sheet: (no. A-1)
BID OP. 311-2005