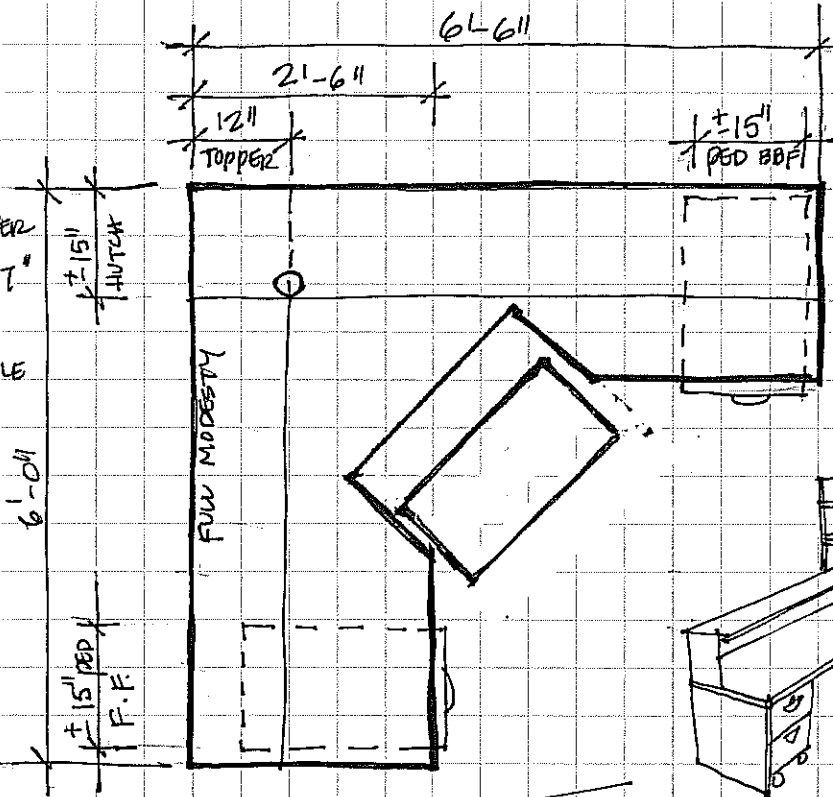
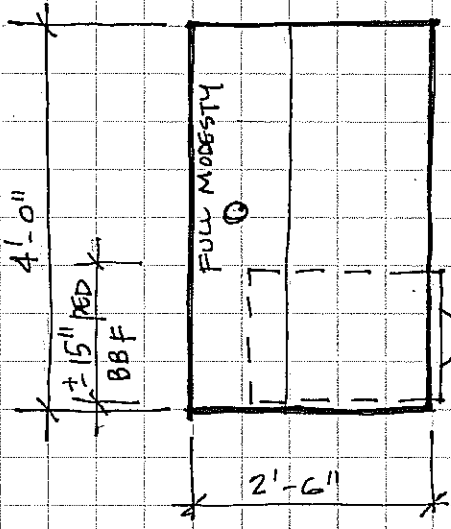


- STATION 1
- KEYBOARD TRAY / DRAWER
  - DESK TOPPER ON "FRONT"
  - STANDARD HUTCH
  - 2 MOBILE PDS, LOCKABLE KEYPAD ALIKE @ BBF, 1 @ FF
  - 1 GROMMET



- STATION 2
- DESK TOPPER
  - GROMMET
  - MOBILE PDS, LOCKABLE



COLOURS  
 CARCASS: SLATE  
 WORK SURFACES, TOPPERS & HUTCH:  
 HARD ROCK MAPLE  
 KEYBOARD: TO FOLLOW

CHARLESWOOD LIBRARY PACER  
 CIRCULATION DESKS

A-2

SGDH  
 AUG '07