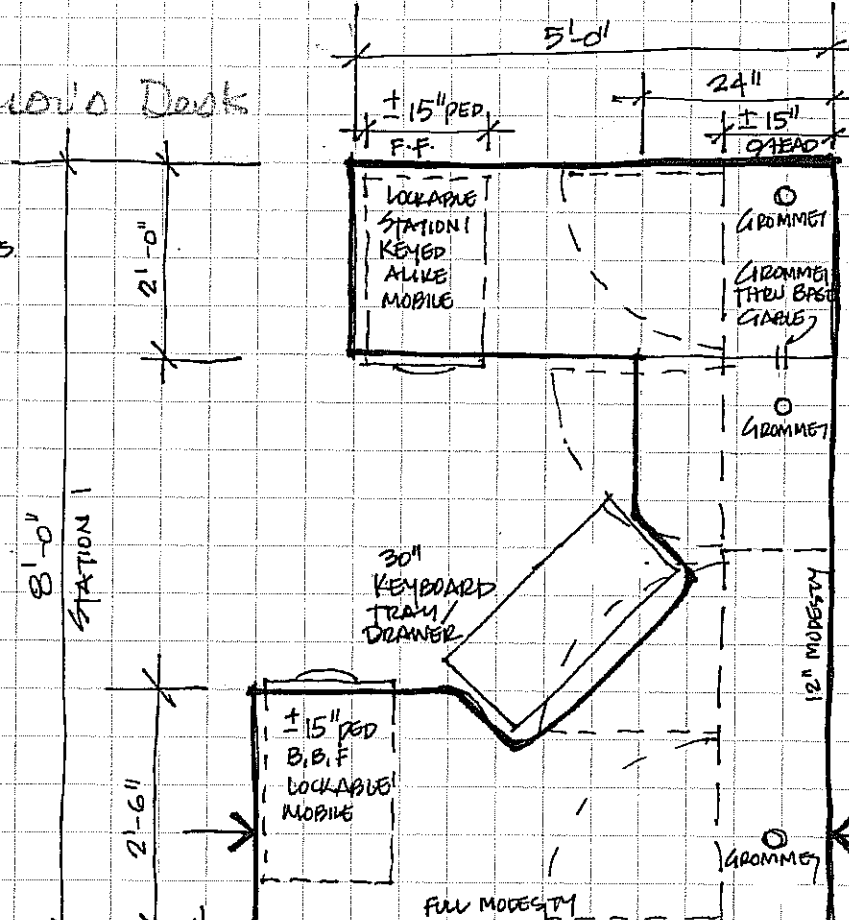


STATION 1 Superman's Desk

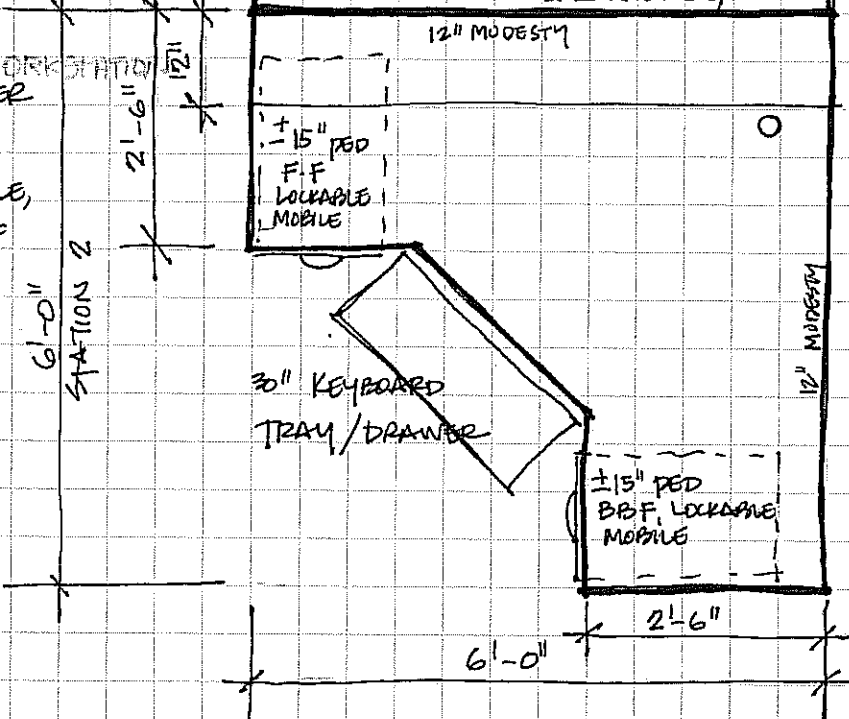
- KEYBOARD TRAY/DRAWER
- 3 GROMMETS
- 2 @ MOBILE, LOCKABLE PEDS, KEYED ALIKE @BBF, 1 @ FF
- CLOSED QA HOCH
- TACKBOARD
- 2 LIGHTS



- 2 SHELF CLOSED QA
- 2 @ 3' LIGHTS
- TACKBOARDS UNDER ALL OVERHEADS

STATION 2 MULTI USE COMPUTER WORKSTATION

- KEYBOARD TRAY/DRAWER
- GROMMET
- 2 @ MOBILE PEDS, LOCKABLE, KEYED ALIKE, 1 @ BBF, 1 @ F.F.
- DESK TOPPER



DESK TOPPER
12" X 6'-0" X
13" H (INSIDE)

PEMBINA TRAIL LIBRARY PAGE 1
2724 PEMBINA HWY
COLORS TO FOLLOW

A-15

SEPH
AUG 07