

- o LIGHT (3)
- o TACKBOARD
- o KEYBOARD TRAY/DRAWER
- o 3 CROMMETS
- o 3 MOBILE PEDS, LOCKABLE, KEYPED ALIKE @ B.B.F., 2 @ F.F.
- o STANDARD HUTCH

* PROVIDE PRICING FOR SEPARATE PRICE ITEM:
2 @ 35" PEDS - SEE BELOW

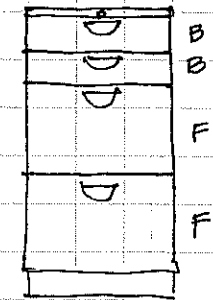
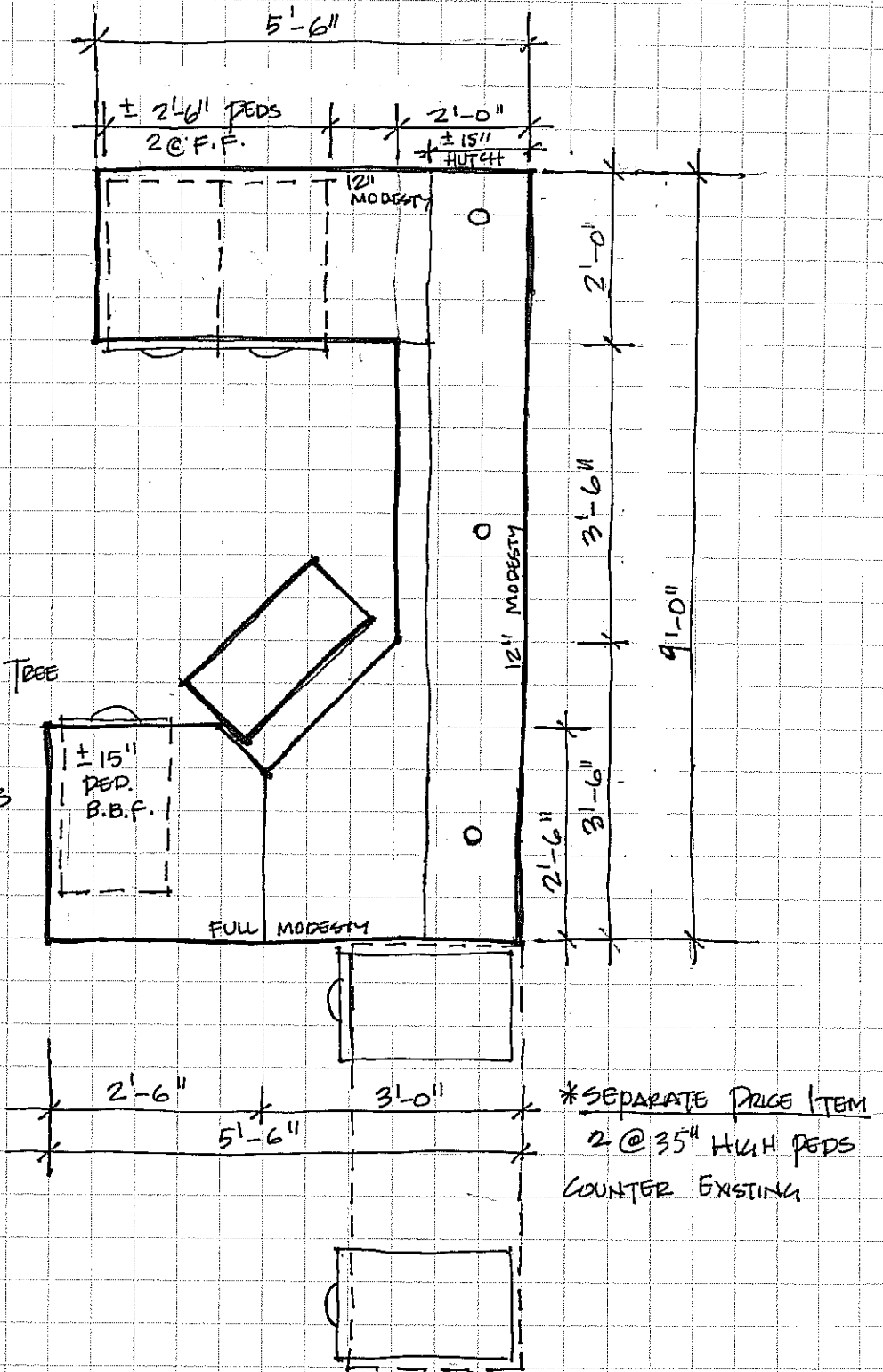
COLOURS:

CARCASS: CHOCOLATE PEAR TREE

WORK SURFACE & HUTCH:

CANDELLIGHT

TACKBOARD: TERRA COTTA #53



* SEPARATE PRICE
2 @ 35" HIGH, PEDS, FIXED
LOCKABLE, KEYPED ALIKE
AND AS FOR THE DESK

HENDERSON LIBRARY PAGE 2
CHILDREN'S OFFICE

A-11

SEDH
AUG '07