

- o LIGHT (3)
- o TALKBOARD
- o KEYBOARD TRAY/DRAWER
- o 3 GROMMETS
- o 3 MOVING PDS, LOCKABLE, KEYPED ALIKE @ B.B.F., 2 @ F.F.
- o STANDARD HUTCH.

~~\* SEPARATE PRICING FOR SEPARATE PRICE ITEM: 2 @ 35" PDS - SEE BELOW~~

**N.I.C.**

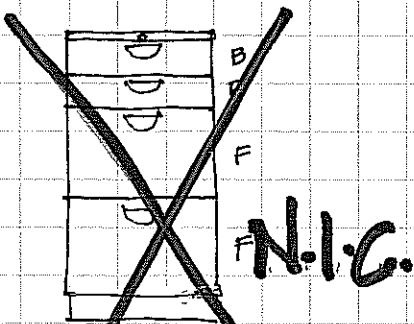
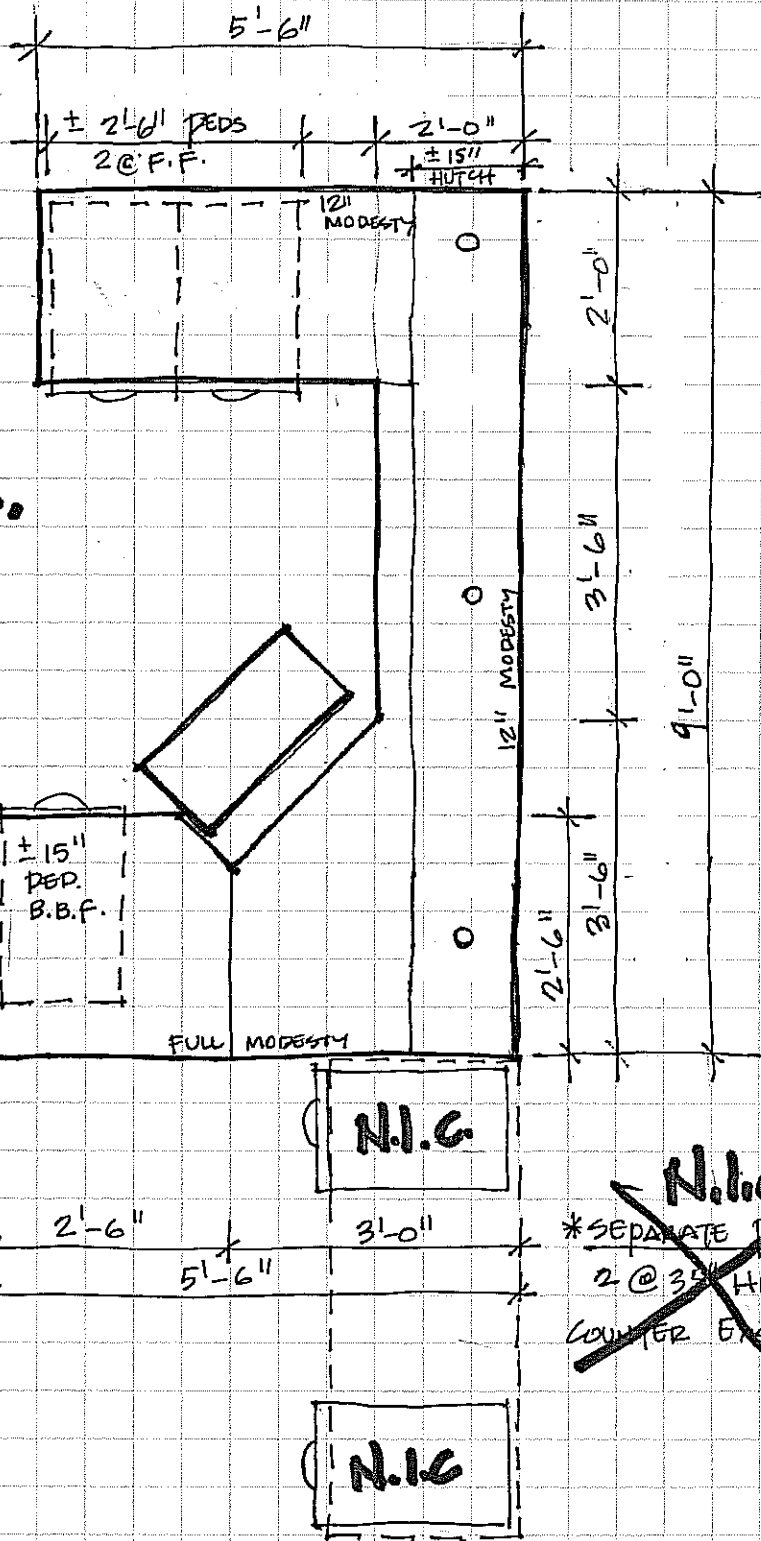
COLOURS:

CARCASS: CHOCOLATE DEAR TREE

WORK SURFACE + HUTCH:

CANDELLIGHT

TALKBOARD: TERRA COTTA #53



~~\* SEPARATE PRICE 2 @ 35" HIGH PDS, FIXED LOCKABLE, KEYPED ALIKE AND AS FOR THE DESK~~

~~**N.I.C.**  
\* SEPARATE PRICE ITEM  
2 @ 35" HIGH PDS  
COUNTER EXISTING~~

HENDERSON LIBRARY  
1-1050 HENDERSON HWY  
CHILDREN'S OFFICE

DRAWING All R1  
SEDH AUG '07