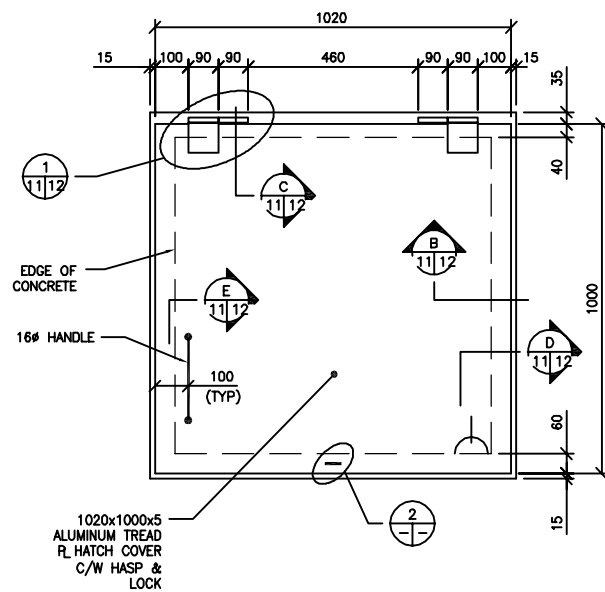
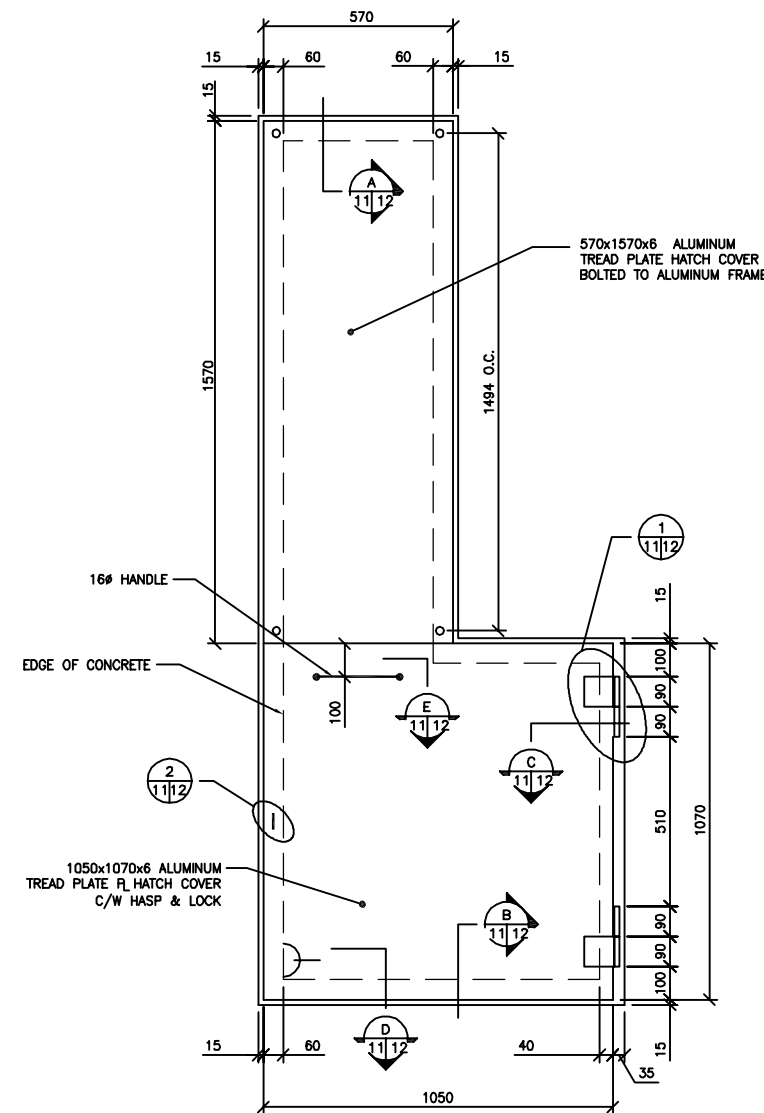


1 DETAIL
1:10



2 DETAIL
1:10

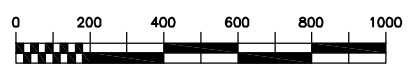


3 DETAIL
1:10

- A = DETAIL NUMBER
- B = DRAWING WHERE TAKEN
- C = DRAWING WHERE SHOWN

NOTE:
CONFIRM ALL DIMENSIONS SHOWN FOR
HATCHES BEFORE FABRICATING.

METRIC
WHOLE NUMBERS INDICATE MILLIMETRES
DECIMALIZED NUMBERS INDICATE METRES



B.M. ELEV.	FIELD BOOK #:	CITY OF WINNIPEG WATER AND WASTE ENGINEERING DIVISION		ENGINEER'S SEAL	THE CITY OF WINNIPEG WATER AND WASTE DEPARTMENT 2007 OUTFALL GATE CHAMBER UPGRADES DOWKER AVENUE & LAKE 6-14 LDS GATE CHAMBERS ACCESS HATCH DETAILS	SHEET 10 OF 11 CITY DRAWING NUMBER LD-3551
POSTED TO LBS				ORIGINAL SIGNED BY K.R. ZUREK 07/08/30		
DESIGNED BY	DGS	CHECKED BY	TW	RELEASED FOR CONSTRUCTION	BID OPPORTUNITY: 663-2005 FILENAME: LD-3551.dwg PLOT DATE: 2007 08 30	
DRAWN BY	CJH	APPROVED BY	KZ			
HOR. SCALE	AS	DATE	2007 08 30			
VERTICAL SCALE	SHOWN					
NO.	REVISIONS	DATE	BY			