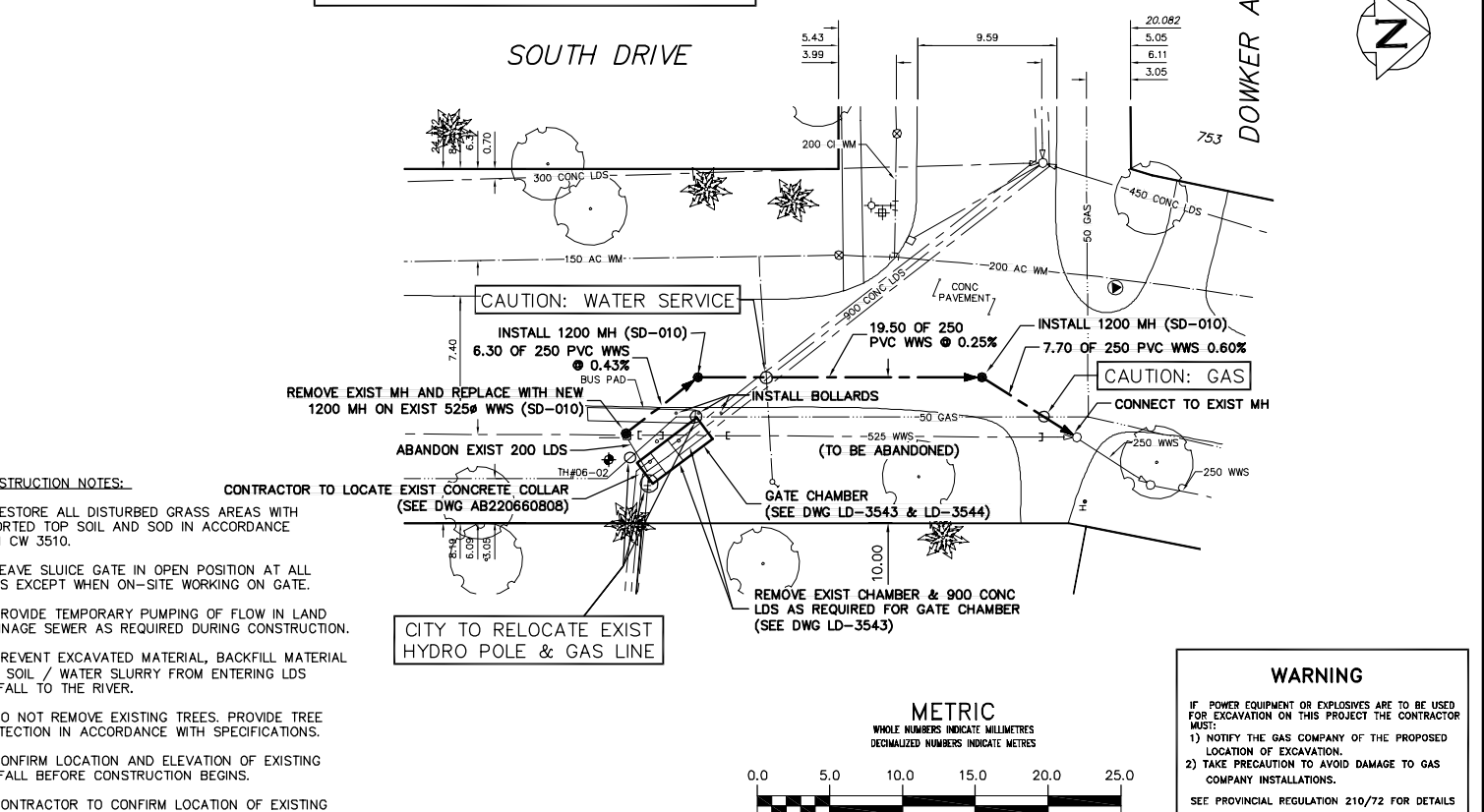
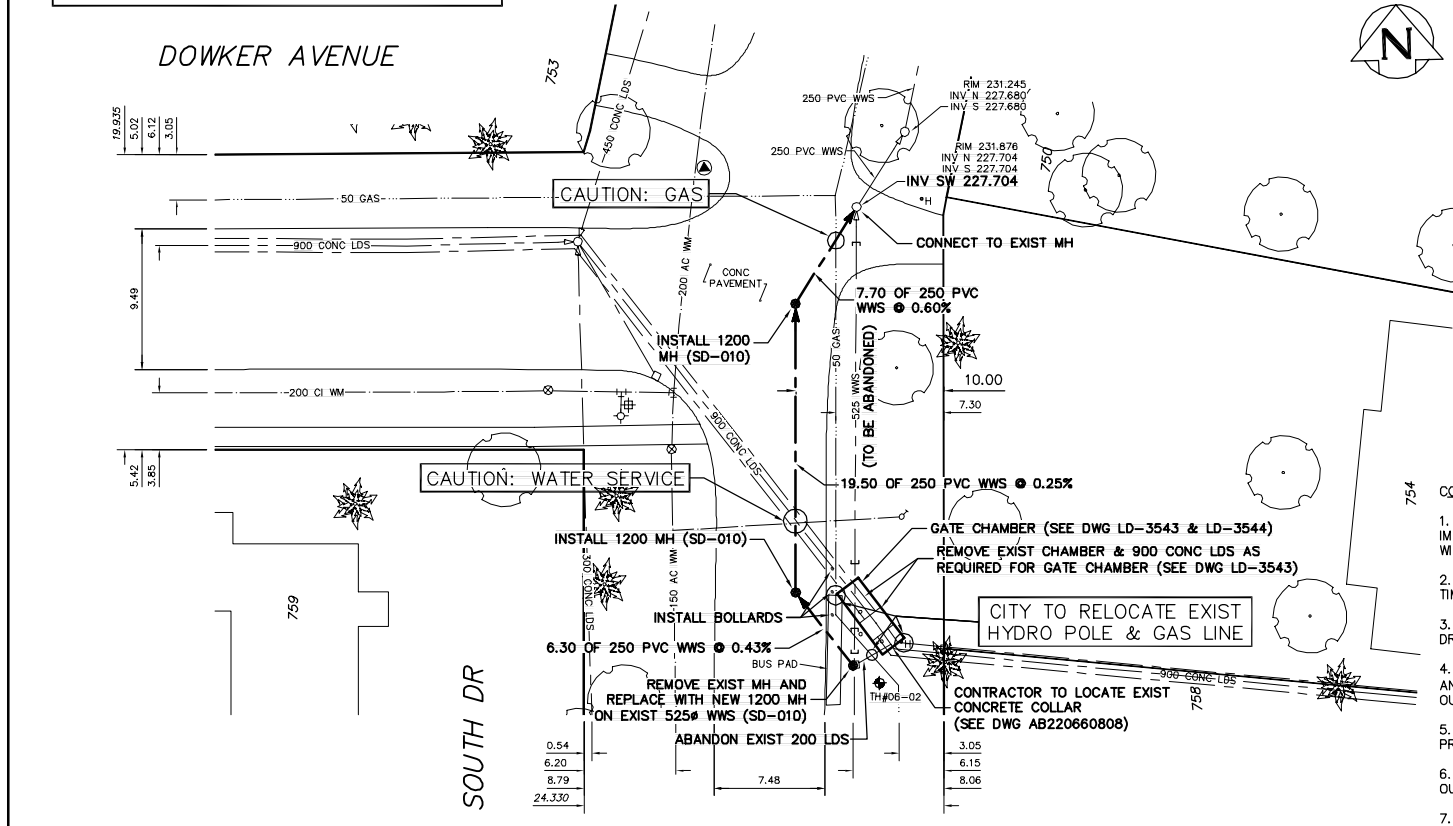


NOTE: CHAINAGES SHOWN ARE ALONG S R OF DOWKER AVE.

NOTE: CHAINAGES SHOWN ARE ALONG E R OF SOUTH DR.



- CONSTRUCTION NOTES:**
- RESTORE ALL DISTURBED GRASS AREAS WITH IMPORTED TOP SOIL AND SOD IN ACCORDANCE WITH CW 3510.
  - LEAVE SLUICE GATE IN OPEN POSITION AT ALL TIMES EXCEPT WHEN ON-SITE WORKING ON GATE.
  - PROVIDE TEMPORARY PUMPING OF FLOW IN LAND DRAINAGE SEWER AS REQUIRED DURING CONSTRUCTION.
  - PREVENT EXCAVATED MATERIAL, BACKFILL MATERIAL AND SOIL / WATER SLURRY FROM ENTERING LDS OUTFALL TO THE RIVER.
  - DO NOT REMOVE EXISTING TREES. PROVIDE TREE PROTECTION IN ACCORDANCE WITH SPECIFICATIONS.
  - CONFIRM LOCATION AND ELEVATION OF EXISTING OUTFALL BEFORE CONSTRUCTION BEGINS.
  - CONTRACTOR TO CONFIRM LOCATION OF EXISTING SEWER CONNECTIONS.

**WARNING**

IF POWER EQUIPMENT OR EXPLOSIVES ARE TO BE USED FOR EXCAVATION ON THIS PROJECT THE CONTRACTOR MUST:

- NOTIFY THE GAS COMPANY OF THE PROPOSED LOCATION OF EXCAVATION.
- TAKE PRECAUTION TO AVOID DAMAGE TO GAS COMPANY INSTALLATIONS.

SEE PROVINCIAL REGULATION 210/72 FOR DETAILS

200 WM	WATERMAIN	200 WM	SL, HYDRO	150 WM	WATERMAIN	150 WM
⊕	HYDRANT	⊕	MTS	⊕	HYDRANT	⊕
⊙	VALVE	⊙	TRAFFIC SIGNALS	⊙	VALVE	⊙
525 LDS	LAND DRAINAGE SEWER	525 LDS	50 GAS	300 LDS	LAND DRAINAGE SEWER	300 LDS
375 WWS	WASTEWATER SEWER	375 WWS	SURVEY BAR	250 WWS	WASTEWATER SEWER	250 WWS
○	MANHOLE	○	FENCE	⊙	PROFILE	⊙
□	CATCH BASIN	□	POLE - HYDRO, MTS	⊕	GROUND ABOVE PIPE	⊕
▽	CURB INLET	▽	CURB STOP	⊕	? DITCH (SOUTH & EAST)	⊕
⊕	JUNCTIONS	⊕	GUY ANCHOR	⊕	GUTTER (NORTH & WEST)	⊕
⊕	CULVERT	⊕	LIGHT STANDARD	⊕		⊕
⊕	ANODE	⊕	TREE	⊕		⊕
EXISTING	LEGEND-PLAN	PROPOSED	EXISTING	LEGEND-PLAN	PROPOSED	EXISTING
				LEGEND-PROFILE	PROPOSED	

LOCATION APPROVED UNDERGROUND STRUCTURES

SUPV. U/G STRUCTURES COMMITTEE DATE

NOTE: LOCATION OF UNDERGROUND STRUCTURES AS SHOWN ARE BASED ON THE BEST INFORMATION AVAILABLE BUT NO GUARANTEE IS GIVEN THAT ALL EXISTING UTILITIES ARE SHOWN OR THAT THE GIVEN LOCATIONS ARE EXACT. CONFIRMATION OF EXISTENCE AND EXACT LOCATION OF ALL SERVICES MUST BE OBTAINED FROM THE INDIVIDUAL UTILITIES BEFORE PROCEEDING WITH CONSTRUCTION.

B.M. ELEV. FIELD BOOK #

POSTED TO LBS

**CITY OF WINNIPEG WATER AND WASTE ENGINEERING DIVISION**

DESIGNED BY DGS CHECKED BY TW

DRAWN BY CJH APPROVED BY KZ

HOR. SCALE 1:250 VERTICAL 1:50

RELEASED FOR CONSTRUCTION

NO. REVISIONS DATE BY DATE 2007 08 30 DATE

ENGINEER'S SEAL

ORIGINAL SIGNED BY K.R. ZUREK 07/08/30

**THE CITY OF WINNIPEG WATER AND WASTE DEPARTMENT**

2007 OUTFALL GATE CHAMBER UPGRADES

SHEET 1 OF 11

CITY DRAWING NUMBER

**DOWKER AVENUE LDS OUTFALL GATE CHAMBER SITE PLAN**

LD-3542

BID OPPORTUNITY: 663-2007  
FILENAME: LD-3542.dwg  
PLOT DATE: 2007 08 30