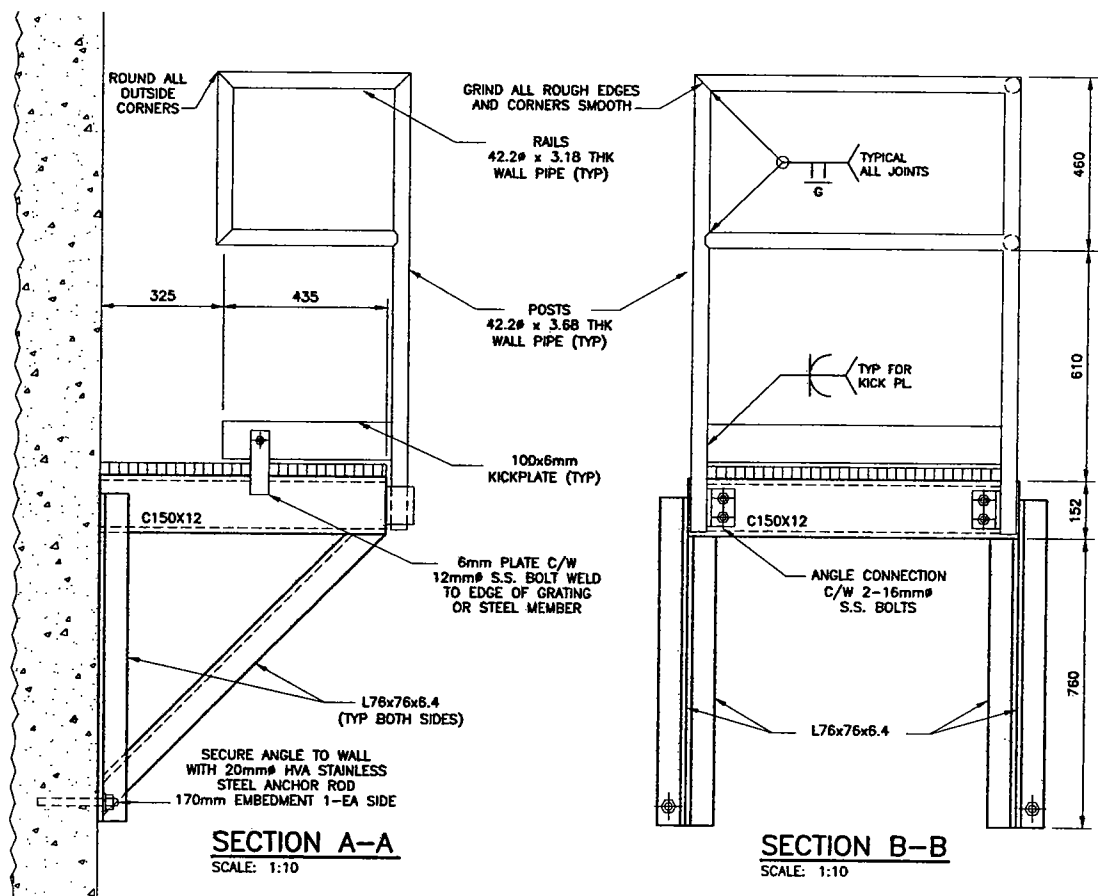


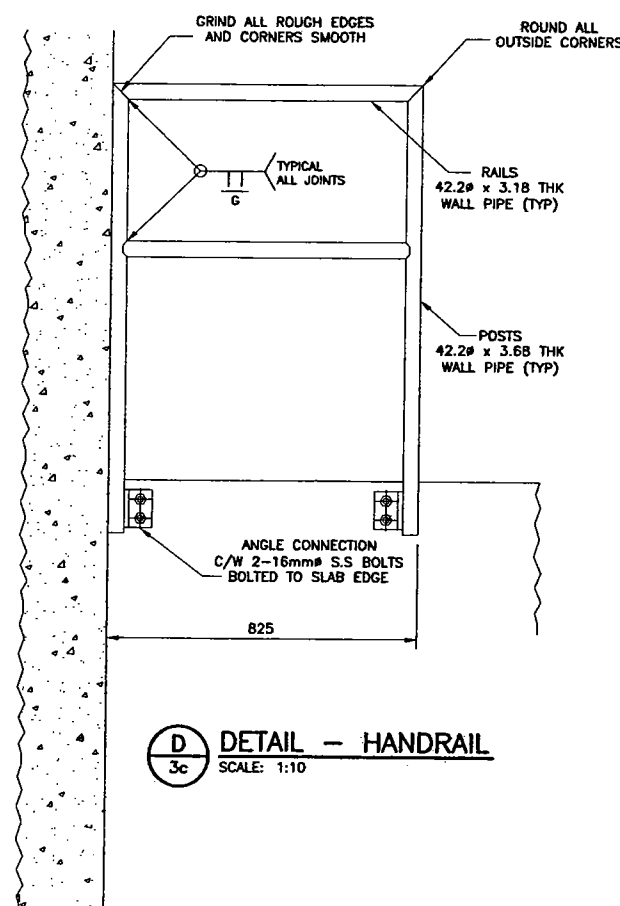
**4** DETAIL - REST PLATFORM  
SCALE: 1:10  
(3 REQ'D)

ALL MATERIALS ON THIS DRAWING TO BE ALUMINUM UNLESS NOTED OTHERWISE

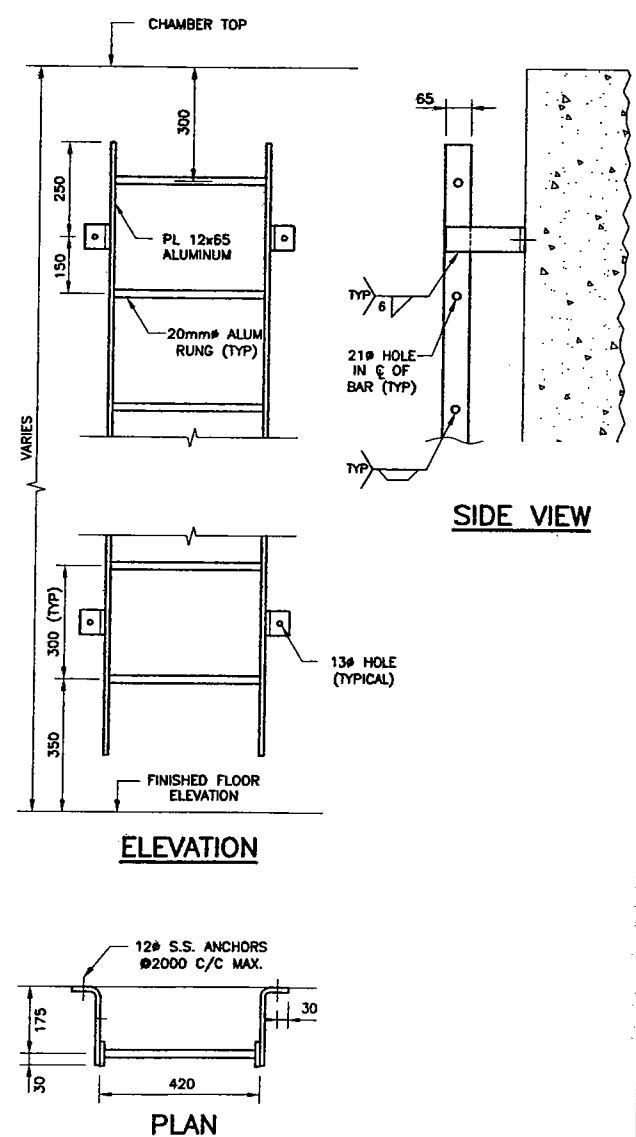


SECTION A-A  
SCALE: 1:10

SECTION B-B  
SCALE: 1:10

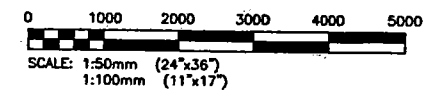


**D** DETAIL - HANDRAIL  
SCALE: 1:10



**E** TYPICAL LADDER DETAIL  
SCALE: 1:10  
(5 REQUIRED)

1. REFER TO DRAWING 48aS-001c FOR GENERAL NOTES.



NO.	04/07/06	ISSUED FOR TENDER AND CONSTRUCTION	TF	CMS	JBS
REVISIONS			BY	CKD	APP.

**KGS GROUP**

SUBCONSULTANT DWG NO.:

C of A

PROFESSOR OF MECHANICAL ENGINEERING  
**C.M. SIEPMAN**  
Member 20813

DESIGNED BY:	TF	DRAWN BY:	EC	SCALE:	AS NOTED
CHECKED BY:	CMS	APPROVED BY:	J B SMITH	DATE:	MAY 2006

KGS GROUP SUBMITTED BY: RICK CARSON

OWNER: **MANITOBA FLOODWAY AUTHORITY**

PROJECT: **RED RIVER FLOODWAY EXPANSION**

PHASE: **MAIN CHANNEL CONTRACT No. C5**

TITLE: **KILDARE LAND DRAINAGE FLOOD PUMPING STATION STRUCTURAL WORKS MISCELLANEOUS METAL SECTIONS AND DETAILS**

RELEASED FOR CONSTRUCTION:

DOUG McNEIL VICE PRESIDENT OF ENGINEERING AND CONSTRUCTION	SHT.	REV.
OWNER Dwg NO. CC5-48aS-014c	01	00



24x36 / [609x914] 2: \Projects\2005\05-0107-17\Civil\Drawings\REVISION 00\CC5-48aS-014c-01.dwg - Tab: 14c - Apr. 05. 2007 - 3:59pm - User: jgnitzinger