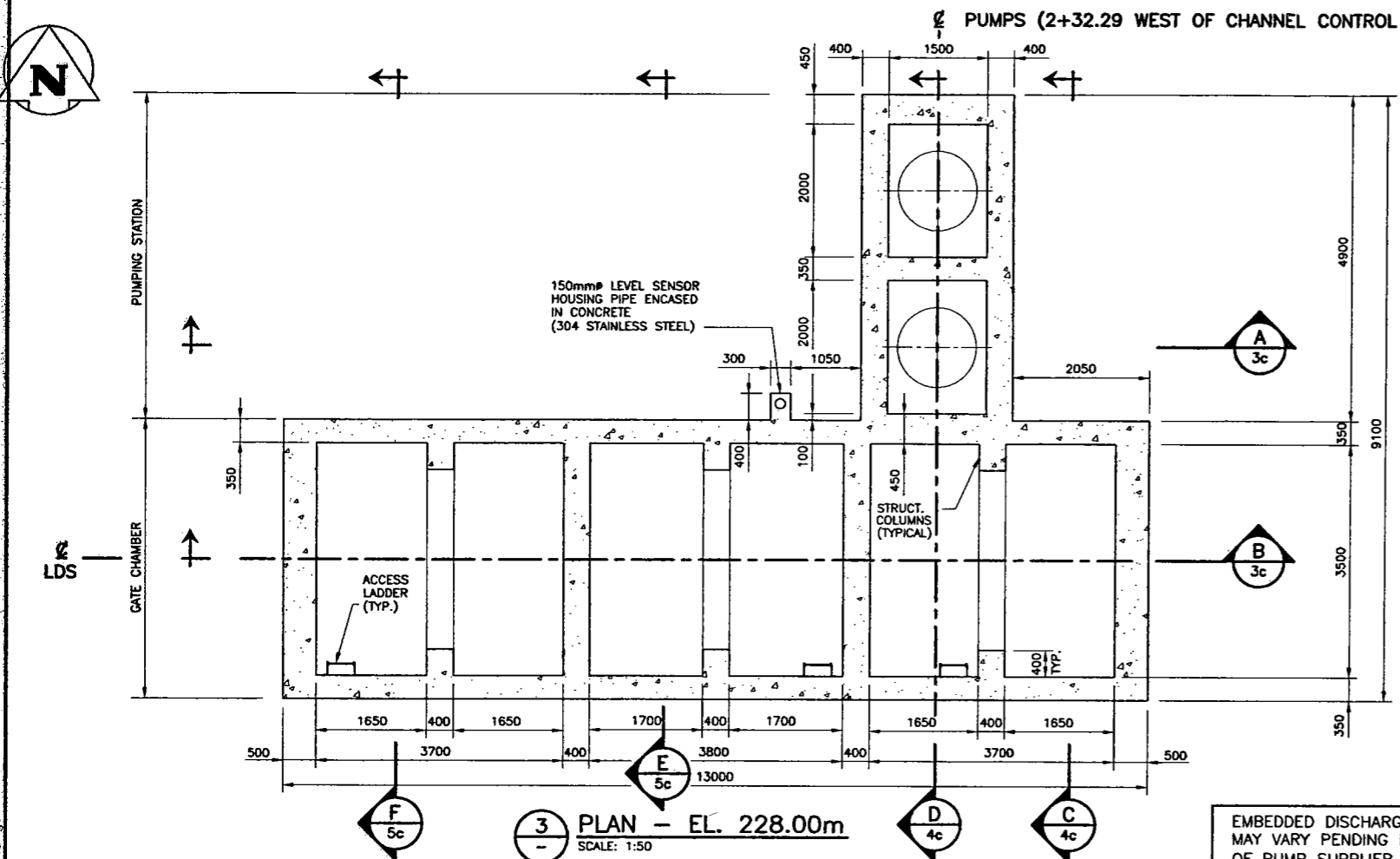
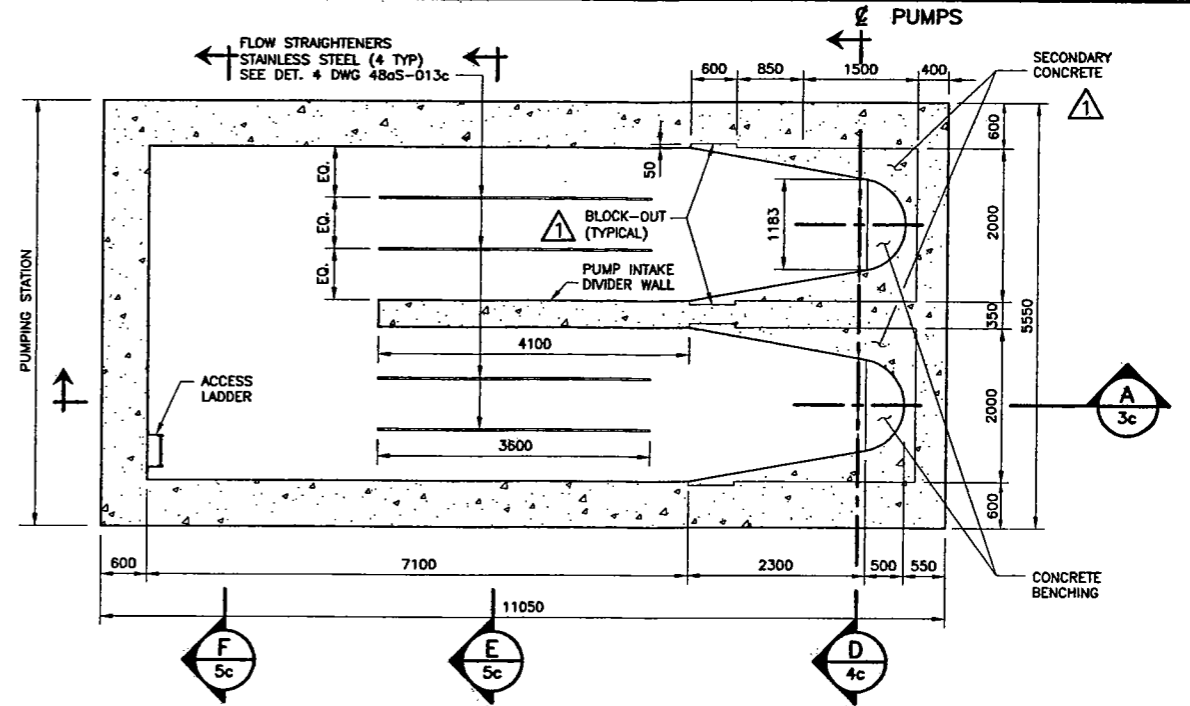


24"x36"/[6094914] \\projects\2005\05-0107-17\Civil\Draws\REV\1\01\CC5-48aS-002c-01-01.dwg - Tab. 2c - Apr. 05, 2007 - 3:54pm - User:Name: jgnitzinger

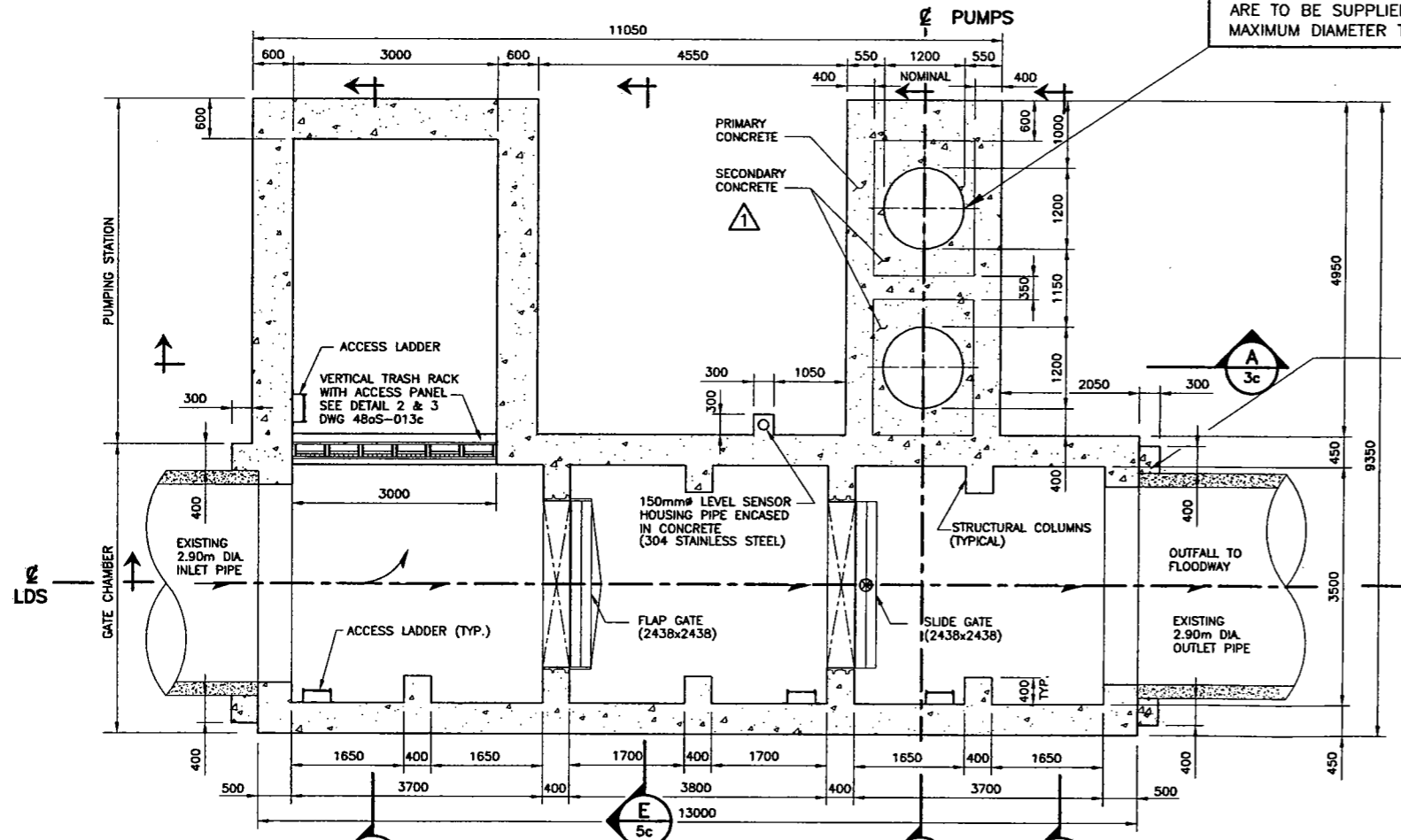


3 PLAN - EL. 228.00m
SCALE: 1:50

EMBEDDED DISCHARGE PIPE DIAMETER MAY VARY PENDING FINAL SELECTION OF PUMP SUPPLIER (DISCHARGE PIPES ARE TO BE SUPPLIED BY OTHERS, MAXIMUM DIAMETER TO BE 1200mm)



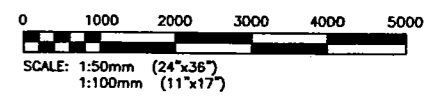
5 PLAN - EL. 222.65m
SCALE: 1:50



4 PLAN - EL. 224.25m
SCALE: 1:50

INSTALL WATERSTOP AROUND PERIMETER OF PIPE COLLAR (TYP. AT INLET & OUTLET)

1. REFER TO DRAWING 48aS-001c FOR GENERAL NOTES.



01	29/11/06	REVISED BEAM AND CONST. JOINTS	TF	CMS	JBS
00	04/07/06	ISSUED FOR TENDER AND CONSTRUCTION	TF	CMS	JBS
NO.	DATE	REVISIONS	BY	CHKD.	APP.

KGS GROUP

SUBCONSULTANT DWG NO.:

ENG. STAMP
THE ORIGINAL ISSUE
REV 0 WAS STAMPED,
DATED AND SIGNED
BY C.M. SIEPMAN
ON 04/07/06
D/M/Y

No. 245 Expiry: April 30, 2007

DESIGNED BY: TF	DRAWN BY: EC	SCALE: AS NOTED
CHECKED BY: CMS	APPROVED BY: J B SMITH	DATE: MAY 2006

KGS GROUP SUBMITTED BY: RICK CARSON

OWNER
MANITOBA FLOODWAY AUTHORITY

PROJECT:
RED RIVER FLOODWAY EXPANSION

PHASE:
MAIN CHANNEL CONTRACT No. C5

TITLE:
**KILDARE LAND DRAINAGE FLOOD PUMPING STATION
STRUCTURAL WORKS
CONCRETE - SECTIONAL PLANS
AT EL 228.00, 224.25 AND 222.65**

RELEASED FOR CONSTRUCTION:

DOUG McNEIL
VICE PRESIDENT OF ENGINEERING AND CONSTRUCTION

OWNER DWG NO.: CC5-48aS-002c	SH. 01	REV. 01
------------------------------	--------	---------

