

BASEMENT FLOOR PLAN - PLUMBING DEMOLITION
 SCALE: 1/8"=1'-0"

PLUMBING DEMOLITION NOTES

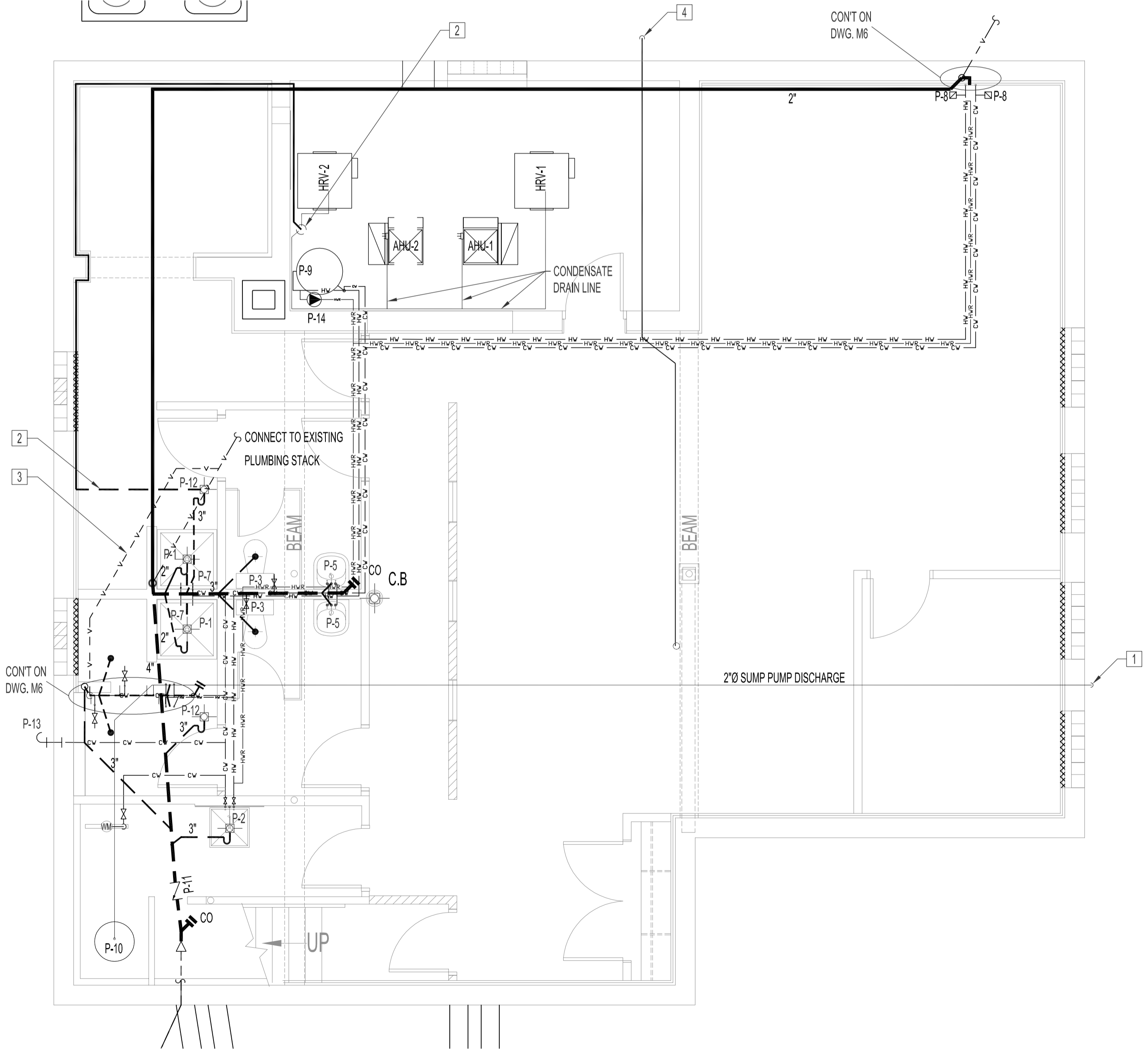
REMOVE ALL EXISTING PLUMBING LINES, FIXTURES AND VALVES BACK TO SOURCE. SEE DRAWING M4 FOR IN-FLOOR PLUMBING.

PLUMBING RENOVATION NOTES:

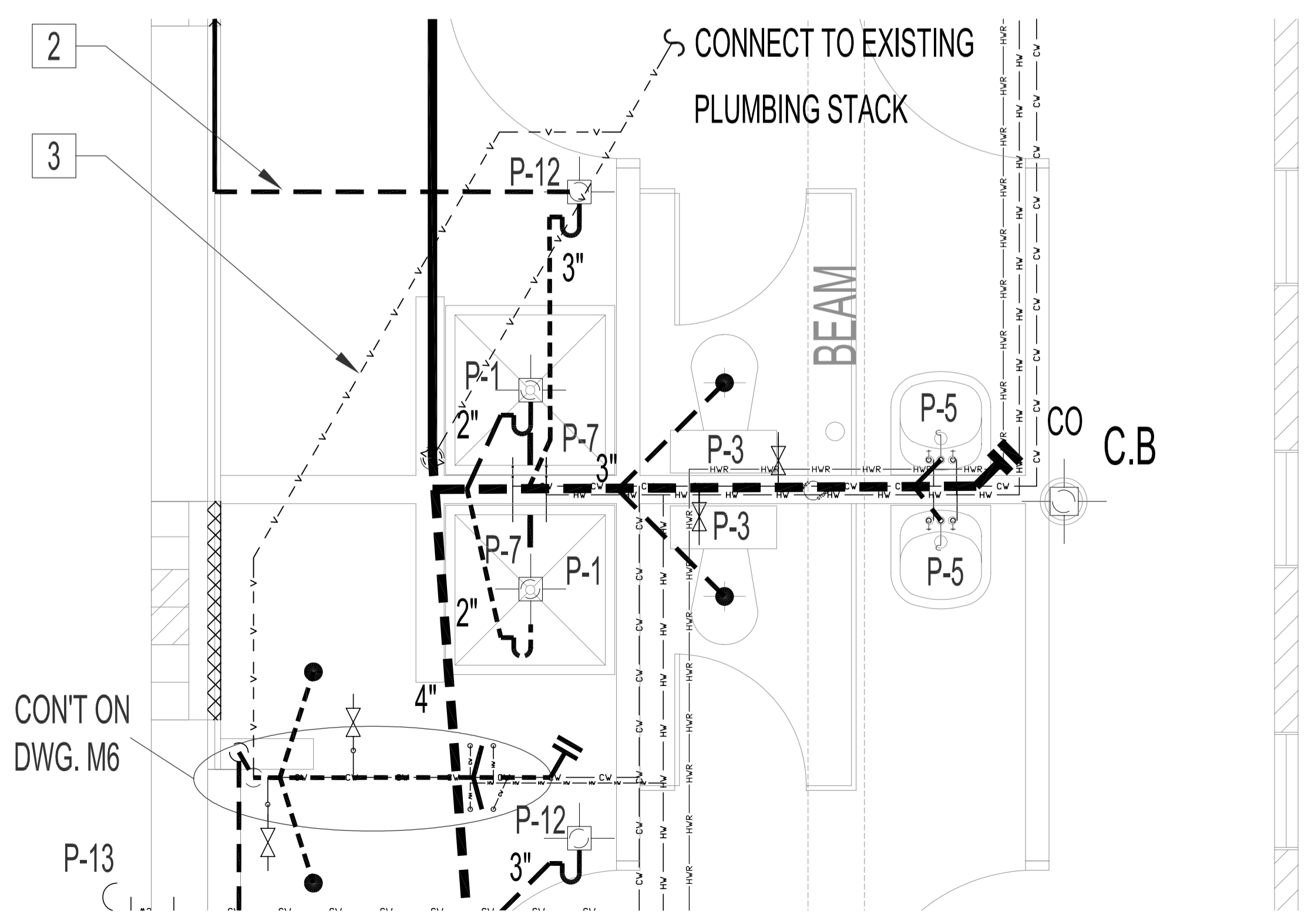
- SUPPLY & INSTALL, UNLESS OTHERWISE NOTED.
- SUPPLY & INSTALL 2" COPPER DISCHARGE LINE FOR SUMP PUMP, P-10, & SUMP PIT WITH FLEX/EXPANSION CONNECTOR. ROUTE UP TO UNDERSIDE OF FLOOR JOIST. TERMINATE OUTSIDE WITH (2) 90° ELBOWS 12" FROM FINISH GRADE. INSULATE 8 FEET OF LINE FROM EXTERIOR WALL WITH 1/2" THICK PIPE INSULATION & ASJ (ALL SERVICE JACKET).
 - CONDENSATE DRAIN CONSIST OF 1-1/4" COPPER PIPE WITH DRAIN FUNNEL MOUNTED 6" ABOVE FLOOR (FLUSH WITH WALL) & SLOPED TO CONNECT BELOW FLOOR TO NEW FLOOR DRAIN. SEE DRAWING M4. ROUTE AS SHOWN. INSIDE NEW WALL CAVITY. PROTECT PIPE INSIDE WALL CAVITY WITH STUD STEEL PROTECTORS.
 - ROUTE INSIDE WALL UP TO ATTIC SPACE TO TIE INTO EXISTING PLUMBING STACK.
 - EXTEND ROOF DRAIN DISCHARGE WITH PIPE & 90° ELBOWS. TERMINATE 12" FROM BUILDING & 12" ABOVE SPLASH PAD.

PLUMBING SCHEDULE		
TAG	TYPE	DESCRIPTION
P-1		VENCO, V3636, GELCOATED HEAVY DUTY ONE PIECE SHOWER UNIT C/W CURTAIN ROD, CONFIGURED FOR ONE HANDLE MIXING VALVE AND SCREEN DRIVER STOPS AND C/W 2" SHOWER FLOOR DRAIN.
P-2		SK-1 JANITOR MOP SINK, FLOOR MOUNTED. STERN WILLIAMS #MTB-2424 MOP SINK, 24"x24"x10" DEEP, FLOOR MOUNTED, PRECAST TERRAZZO AND INTEGRAL DRAIN WITH STRAINER. 'BP' S.S. BACK SPLASH PANELS. STERN-WILLIAMS #T-10-VB FAUCET, C.P. 8" C.C. WALL MOUNTED, SOLID CAST BRASS BODY, WITH CAST METAL HANDLES, VACUUM BREAKER, INTEGRAL STOPS. #T-35 S.S. BRACKET, 3/8" HOSE WITH C.P. COUPLING. #T-40 S.S. MOP (TRIPLE) HANGER. 'P' TRAP, 3".
P-3		CAROMA, CARAVELLE 270, DUAL FLUSH (6/3) LITRES, VITREOUS CHINA, C/W TOILET SEAT, COLOR: WHITE. CRANE BRASS BALL SHUT-OFF VALVE & TOILET CONNECTORS.
P-3A		CAROMA, CARAVELLE 270 ADA ELONGATED WASHDOWN DUAL FLUSH (6/3) LITRES, VITREOUS CHINA, ADA DISABLE BUTTON PART #405067, C/W TOILET SEAT, COLOR: WHITE. CRANE BRASS BALL SHUT-OFF VALVE & TOILET CONNECTORS.
P-5		AMERICAN STANDARD, MURRO # 0954.000 WALL HUNG LAVATORY, VITREOUS CHINA WITH 4" CENTERS FITTED WITH DELTA FAUCET MODEL 525-MPU, DELTA 33T290 CAST "P" TRAP, DELTA 33T311, CHROME ANGLE LAVATORY SUPPLIES, DELTA 47T2512SD.
P-5A		AMERICAN STANDARD, MURRO # 0954.000 WALL HUNG LAVATORY, VITREOUS CHINA WITH 4" CENTERS FITTED WITH DELTA MIXING/ SENSING ELECTRONIC FAUCET, DELTA MODEL 596-LGHGMHDF, C/W TRANSFORMER, SOLENOID VALVE AND CONTROL BOX. CAST WHEELCHAIR LAVATORY WASTE, DELTA 33T290 CAST "P" TRAP, DELTA 33T311, CHROME ANGLE LAVATORY SUPPLIES, DELTA 47T2512SD. (MOUNT TRANSFORMER IN WALL CAVITY WITH ACCESS PANEL)
P-7		DELTA MODEL 1325-WSHDF CHROME SHOWER HEAD AND MIXING VALVE, PRESSURE BALANCED
P-8		ZURN SHOKTROL Z-1700 WATER HAMMER ARRESTOR, SIZE 200.
P-9		A.O. SMITH, MODEL BTH-120 "CYCLONE", EXTRA HIGH EFFICIENCY CONDENSING WATER HEATER, DIRECT VENT NATURAL GAS, 60 US GALLON CAPACITY, 120,000 BTUH INPUT, 1/2" GAS VALVE PIPING
P-10		GRUNDFOS "THE BOSS" MODEL 300 STAINLESS STEEL SUBMERSIBLE SUMP PUMP WITH FLOAT SWITCH 23 GPM @ 20FT HEAD, 1/2HP, 9AMP, 115V/60HZ/1PH. ACCESSORIES TO INCLUDE CHECK VALVE, FITTINGS & "SABER" SUMP PIT WITH EXTENSIONS (TOTAL DEPTH 6 FEET) C/W SUMP PUMP HOOK-UP, PIPE FITTINGS AND DISCHARGE ASSEMBLY.
P-11		ZURN Z-1095-15, 4" BACKWATER VALVE WITH FLOOR LEVEL CLEANOUT. ADDITIONAL CAST IRON PIPE EXTENSIONS, IF REQUIRED.
P-12		ZURN # ZXN-211-A, 3" FLOOR DRAIN WITH HEAVY-DUTY, NICKEL BRONZE ROUND STRAINER
P-13		ZURN #Z1305-VB, WALL HYDRANT WITH ADAPTER VACUUM BREAKER ENCASED, NON FREEZE.
P-14		GRUNDFOS #UP15-185U STAINLESS STEEL BODY CIRCULATOR 1.9 US GPM @ 6.9 FT 120V/1/25 HP.

NOTES :
 SEE NOTES ON DRAWING M1.



BASEMENT FLOOR PLAN - PLUMBING RENOVATION
 SCALE: 1/4"=1'-0"



ENLARGED PARTIAL BASEMENT FLOOR PLAN - PLUMBING RENOVATION
 SCALE: 1/2"=1'-0"

NO.	REVISION/DESCRIPTION	BY	DATE
SEALS			
ORIGINAL STAMPED BY: DOUG PALEY, P. ENG. DATE: 2007.10.17			

DRAWN BY	CHECKED BY	APPROVED
RCPI/DTA	USER APPROVAL	
DATE: 2007.10.11		

CITY OF WINNIPEG
 PLANNING, PROPERTY &
 DEVELOPMENT DEPARTMENT
 CIVIC ACCOMMODATIONS DIVISION
 300 - 65 GARRY ST. R3C 4K4

PROJECT
 COMMUNITY POLICE SERVICE CENTRE

1400 HENDERSON HWY.

SHEET TITLE
 BASEMENT FLOOR PLAN
 PLUMBING
 DEMOLITION & RENOVATION

SCALE	PROJECT NO.	SHEET NO.
AS SHOWN	2004-023	M5