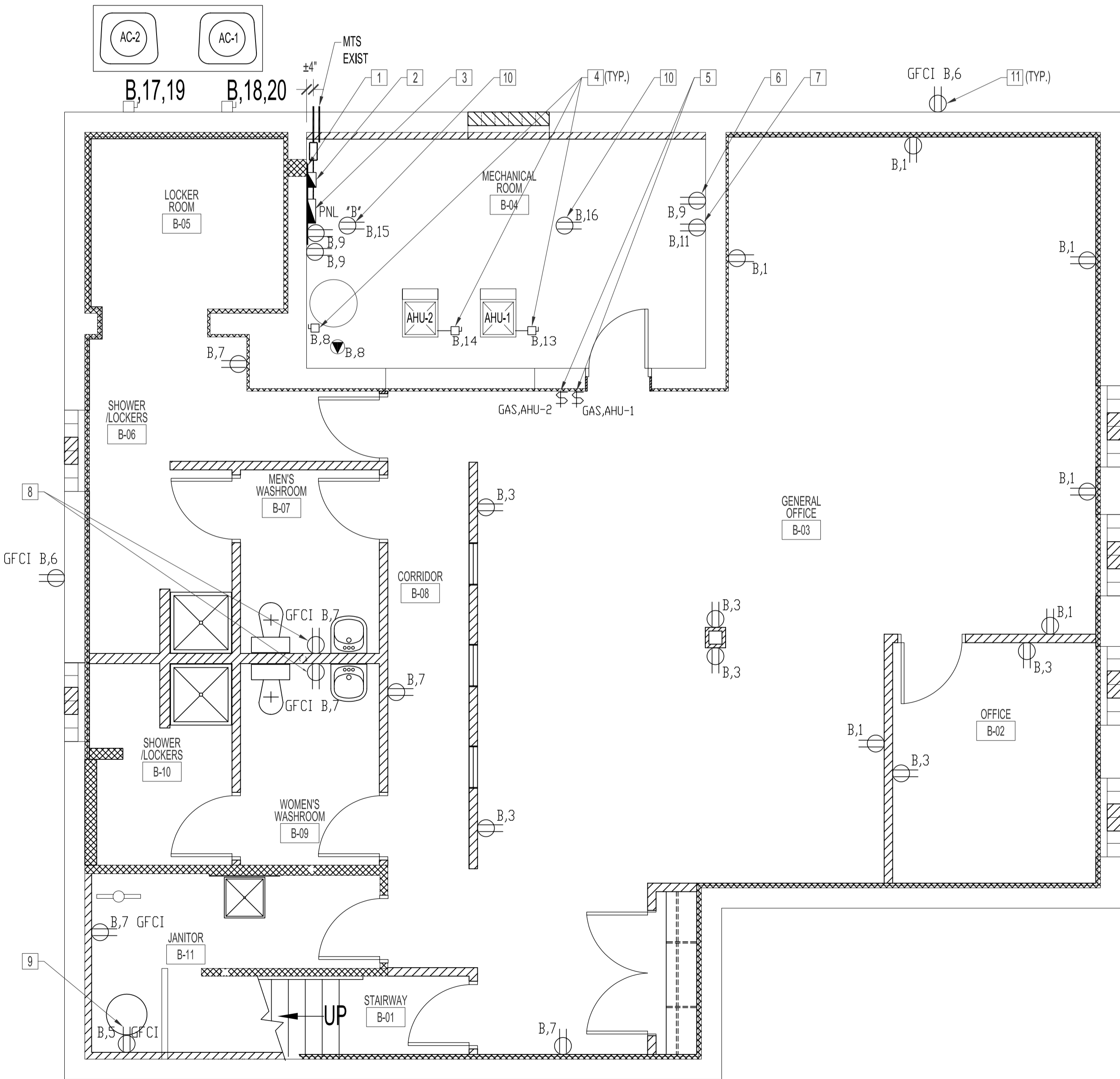


**BASEMENT FLOOR PLAN - ELECTRICAL DEMOLITION**  
SCALE: 1/8"=1'-0"

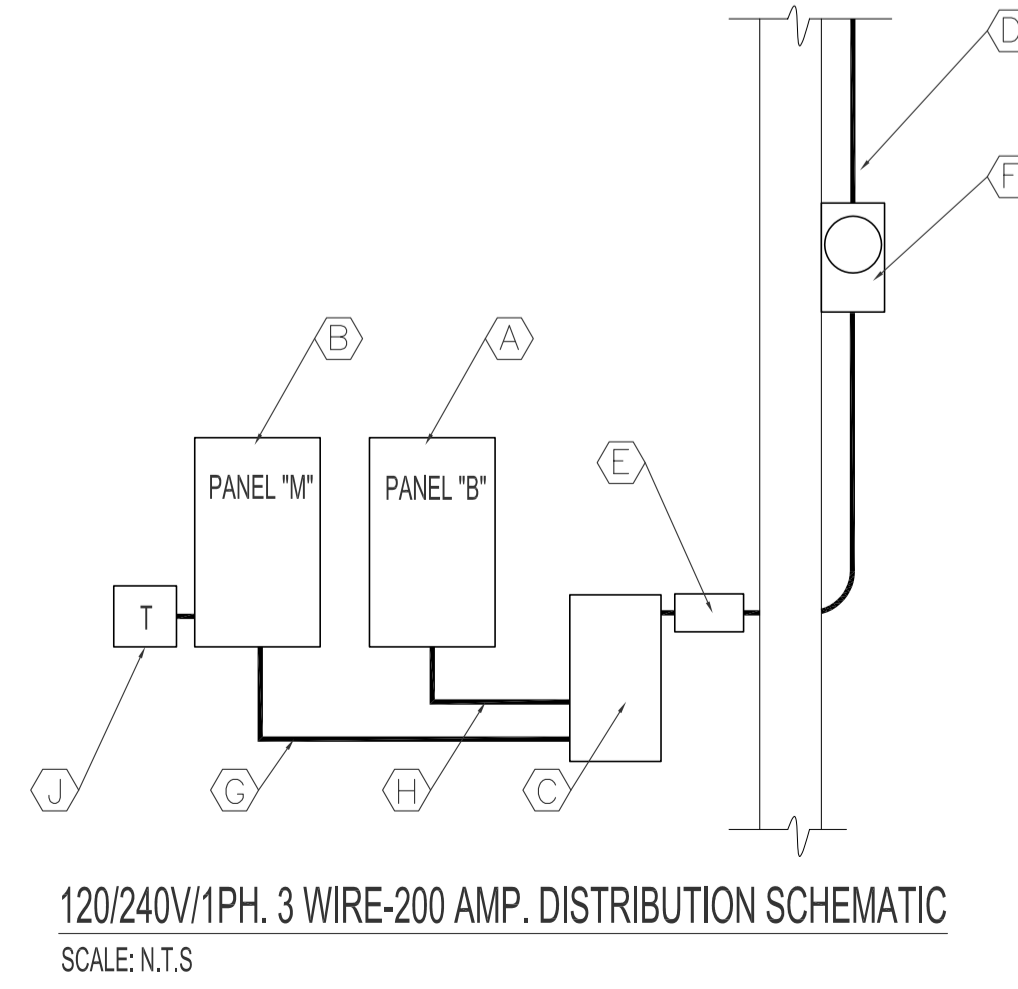
PANEL 'B' (BASEMENT)		BUS RATING 225A		MOUNTING: SURFACE	
DEMAND LOAD	CIRCUIT NO.	CIRCUIT DESCRIPTION	CIRCUIT NO.	CIRCUIT DESCRIPTION	DEMAND LOAD
	1	RECEP. GENERAL OFFICE B-03	2	LIGHTING: OFFICES: B-02, B-03	
	3	RECEP. OFFICES B-02 & B-03	4	LIGHTING: BASEMENT SOUTH, MECHANICAL RM.	
	5	SUMP PUMP	6	RECEP. OUTDOOR	
	7	RECEP. WASHRMS, JANITOR & HALLWAY	8	DOMESTIC HOT WATER TANK & RECIRC. PUMP	
	9	RECEP. B04, B04, B03, & M06 CICO DETECTORS	10	SPARE	
	11	RECEP. EMERGENCY LIGHTING	12	SPARE	
	13	FURNACE AHU-1	14	FURNACE, AHU-2	
	15	HRV-2	16	HRV-1	
	17	AIR CONDITIONER AC-2 # 8 AWG	18	AIR CONDITIONER AC-1 # 8 AWG	
	19		20		
	21	SPARE	22	SPARE	
	23	SPARE	24	SPARE	
	25	SPARE	26	SPARE	
	27	SPACE	28	SPACE	
	29	SPACE	30	SPACE	
	31	SPACE	32	SPACE	
	33	SPACE	34	SPACE	
	35	SPACE	36	SPACE	
	37	SPACE	38	SPACE	
	39	SPACE	40	SPACE	

PANEL 'M' (MAIN FLOOR)		BUS RATING 225A		MOUNTING: RECESSED	
DEMAND LOAD	CIRCUIT NO.	CIRCUIT DESCRIPTION	CIRCUIT NO.	CIRCUIT DESCRIPTION	DEMAND LOAD
	1	LIFT	2	SIGN LIGHT	
	3	RECEP. STORAGE 107, OFFICE 108 & WAITING AREA 102	4	LIGHTING: WAITING AREA 102 & OFFICE 106	
	5	RECEP. WASHROOMS, WAITING AREA & VESTIBULE	6	LIGHTING: SOUTH	
	7	DOOR OPERATOR #1	8	LIGHTING: NORTH	
	9	DOOR OPERATOR #2	10	VESTIBULE HEATER	
	11	RECEP. GENERAL OFFICE 103	12		
	13	RECEP. GENERAL OFFICE 103, & OFFICE 105	14	RECEP. WEST WALL OFFICE 106 & HOISTWAY PIT GFCI	
	15	RECEP. KITCHEN COUNTER	16	RECEP. KITCHEN MICROWAVE	
	17	RECEP. KITCHEN	18	RECEP. KITCHEN FRIDGE	
	19	LIGHTING: GENERAL OFFICE 103, LIFT VEST. VEST. & WAITING AREA	20	LIGHTING: EXTERIOR	
	21	SPARE	22	SPARE	
	23	SPARE	24	SPARE	
	25	SPARE	26	SPARE	
	27	SPARE	28	SPARE	
	29	SPACE	30	SPACE	
	31	SPACE	32	SPACE	
	33	SPACE	34	SPACE	
	35	SPACE	36	SPACE	
	37	SPACE	38	SPACE	
	39	SPACE	40	SPACE	

PANEL 'P' (EXISTING PARKING PANEL)		BUS RATING 225A		MOUNTING: SURFACE	
DEMAND LOAD	CIRCUIT NO.	CIRCUIT DESCRIPTION	CIRCUIT NO.	CIRCUIT DESCRIPTION	DEMAND LOAD
	1	PARKING	9	PARKING	
	2	PARKING	10	PARKING	
	3	PARKING	11	PARKING	
	4	PARKING	12	PARKING	
	5	SPARE	13	SPARE	
	6	PARKING	14	SPACE	
	7	PARKING	15	SPACE	
	8	SPACE	16	SPACE	



**BASEMENT FLOOR PLAN - ELECTRICAL RENOVATION**  
SCALE: 1/4"=1'-0"



- ELECTRICAL DEMOLITION NOTES**  
----- INDICATES DEMOLITION, INCLUDES ELECTRICAL SYMBOLS.
- REMOVE AND DISCARD ALL ELECTRICAL COMPONENTS INCLUDING ALL PANELS, MAIN SWITCHES, RELAYS AND TIMERS FROM BASEMENT UNLESS OTHERWISE NOTED.
  - DO NOT DISCONNECT EXISTING SECURITY SYSTEM COMPONENTS (MOTION SENSORS, DOOR CONTACTS ETC.) HANG LOOSE COMPONENTS ABOVE NEW CEILING SPACE TEMPORARY FOR REINSTALLATION BY OTHERS.
- ELECTRICAL RENOVATION NOTES**
- SUPPLY & INSTALL ELECTRICAL DISTRIBUTION EQUIPMENT BACKBOARD. SEE ARCH. DWG.
  - SUPPLY & INSTALL SERVICE DISTRIBUTION, 200A, 120/240V, SINGLE PHASE SERVICE. SEE ELECTRICAL EQUIPMENT SCHEDULE.
  - SUPPLY & INSTALL SURFACE MOUNTED PANEL 'B'. SEE ELECTRICAL EQUIPMENT SCHEDULE.
  - SUPPLY & INSTALL POWER DISCONNECT SWITCHES FOR AHU-1, AHU-2, HOT WATER HEATER & RECIRCULATING PUMP.
  - SUPPLY & INSTALL SWITCHES FOR GAS SHUT-OFF TO AHU-1 & AHU-2. MOUNT 6'-6" ABOVE FLOOR WITH RED COVER PLATES LABELLED AHU-1, AHU-2.
  - SUPPLY & INSTALL (1) ISOLATED GROUND RECEPTACLE.
  - SUPPLY & INSTALL EMERGENCY LIGHTING BATTERY PACK RECEPTACLE 6'-6" ABOVE FLOOR.
  - SUPPLY & INSTALL WASHROOM GFCI RECEPTACLES AT 3'-8" ABOVE FLOOR.
  - SUPPLY & INSTALL GFCI RECEPTACLE FOR SUMP PUMP.
  - SUPPLY & INSTALL RECEPTACLES FOR HRV-1 & HRV-2. MOUNT RECEPTACLES ON CEILING.
  - SUPPLY & INSTALL EXTERIOR GFCI RECEPTACLES C/W WEATHER PROOF COVERS. (TYP.)

ELECTRICAL EQUIPMENT SCHEDULE	
A	<b>PANEL B:</b> CUTLER-HAMMER CAT. NO. CPM120, TYPE BR LOAD CENTER 225 AMP RATED, CW 100 AMP 2 POLE MAIN BREAKER. PANEL TO BE SURFACE MOUNTED. THIS PANEL WILL ACCEPT 1" & 1/2" SNAP BREAKERS. SUPPLY AND INSTALL BREAKERS AS PER SCHEDULE. BREAKERS SHALL BE 1/2" SIZE UNLESS OTHERWISE NOTED.
B	<b>PANEL M:</b> CUTLER-HAMMER CAT. NO. CPM120, TYPE BR LOAD CENTER 225 AMP RATED, CW 100 AMP 2 POLE MAIN BREAKER. PANEL TO BE RECESSED MOUNTED. THIS PANEL WILL ACCEPT 1" & 1/2" SNAP BREAKERS. SUPPLY AND INSTALL BREAKERS AS PER SCHEDULE. BREAKERS SHALL BE 1/2" SIZE UNLESS OTHERWISE NOTED.
C	<b>SERVICE ENTRANCE:</b> CUTLER-HAMMER: CAT. NO. 1HD224N HEAVY DUTY, FUSIBLE SINGLE THROW SERVICE ENTRANCE. TYPE 1 ENCLOSURE (INDOOR) FOR USE WITH 120/240V, 200A, SINGLE PHASE SERVICE. CSA APPROVED 100% LOAD MAKE / LOAD BREAK RATED. FUSES TO BE FERRAZ SHAWMUT, TR200R TIME DELAY FUSES.
D	<b>SERVICE MAST:</b> MICROELECTRIC SERVICE MAST COMPLETE WITH THE FOLLOWING ACCESSORIES: - 1 1/2" ENTRANCE CAP - HEAVY DUTY SPOOL RACK - 1/2" DIA. "U" BOLT MAST CLAMP - PIPE STRAP WITH TWO 3/8" X 4" 1/2" LAG SCREWS - SUPPORT CLAMP C/W 5/8" X 4 1/2" FULLY THREADED BOLT AND 4"X4" SQUARE WASHER - 2" MAST ADAPTER AND REQUIRED REDUCER - METER SOCKET BRACKET - METER SOCKET MOUNTING BRACKET - SERVICE MAST GROUND CLAMP, WIRE RANGE 8-10 AWG
E	<b>TAP BOX:</b> JRS 200 AMP, 120/240V, 1 PHASE, 3W, WEATHERPROOF TAP BOX.
F	<b>METER SOCKET/ENCLOSURE:</b> MICROELECTRIC CAT. NO. BS2-2V ENCLOSURE/METER SOCKET WEATHERPROOF TYPE 3R ENCLOSURE. 17" X 12" W X 5 1/4" D FOR 120/240V, 200A, SINGLE PHASE SERVICE.
G	3C#3 RW90 - COPPER IN 1 1/4" CONDUIT.
H	3C#3 RW90 - COPPER IN 1 1/4" CONDUIT.
J	120V/24 HR. TIME CLOCK WITH 3-ON-OFF SETTINGS. WIRE TIMER TO CIRCUIT M.2 - SIGN LIGHT.
	POWER DOOR OPERATOR. SEE DRAWING E3 ELECTRICAL RENOVATION NOTE.
	<b>HYDRAULIC VERTICAL PLATFORM LIFT: V1504-STD TYPE 90° SIDE ACCESS</b> - OPERATIONS: 115VAC OPERATION (115 VAC UP DIRECTION AND 12 VDC DOWN DIRECTION BATTERY POWERED). - POWER SUPPLY: 110 VOLT, 20 AMP, 1 PHASE, 60 HZ. - EMERGENCY: 12 VDC BATTERY LOWERING. - ELECTRICAL: AUTOMATIC BATTERY RECHARGING SYSTEM (115 VAC), LOW VOLTAGE CONTROLS, NORMAL LIMIT SWITCHES. - MOTOR/PUMP: 115VAC, 1.5HP (1.119KW) GEAR TYPE HYDRAULIC PUMP. - MANUAL LOWERING: REMOTE LOCATION EMERGENCY MANUAL LOWERING VALVE. - CAR ACCESS: COMBINATION MECHANICAL LOCK AND ELECTRIC STRIKES. - CONTROLLER: ELECTRONIC - FREE RELAY LOGIC.
	ELECTRIC HEATER: CADET, NLWC, 4500W, 240V/110, RECESSED TYPE C/W BUILT IN THERMOSTAT

**NOTES :**  
SEE NOTES ON DRAWING E1  
CIRCUITS NOTED AS SPARES TO HAVE CIRCUIT BREAKERS SUPPLY & INSTALL IN PANEL. SPACES TO HAVE BLANK COVERS.  
ALL BREAKERS TO BE 1/2" "SLIMLINE" BREAKERS TO SUIT PANEL.

ORIGINAL STAMPED BY: DOUG PALEY, P.ENG  
DATE: 2007.10.15

NO.	REVISION/DESCRIPTION	BY	DATE
SEALS			

DRAWN BY: RCP  
DATE: 2007.10.15  
CHECKED BY: USER  
APPROVED: APPROVAL

**CITY OF WINNIPEG  
PLANNING, PROPERTY & DEVELOPMENT DEPARTMENT  
CIVIC ACCOMMODATIONS DIVISION  
300 - 65 GARRY ST. R3C 4K4**

PROJECT: COMMUNITY POLICE SERVICE CENTRE

1400 HENDERSON HWY.

**SHEET TITLE**  
BASEMENT FLOOR PLAN  
ELECTRICAL  
DEMOLITION, RENOVATION, SCHEDULES & SCHEMATIC

SCALE	PROJECT NO.	SHEET NO.
AS SHOWN	2004-023	E2

DRAWING SHEET SIZE: A1 (841mm x 594mm) PLOT 1:1