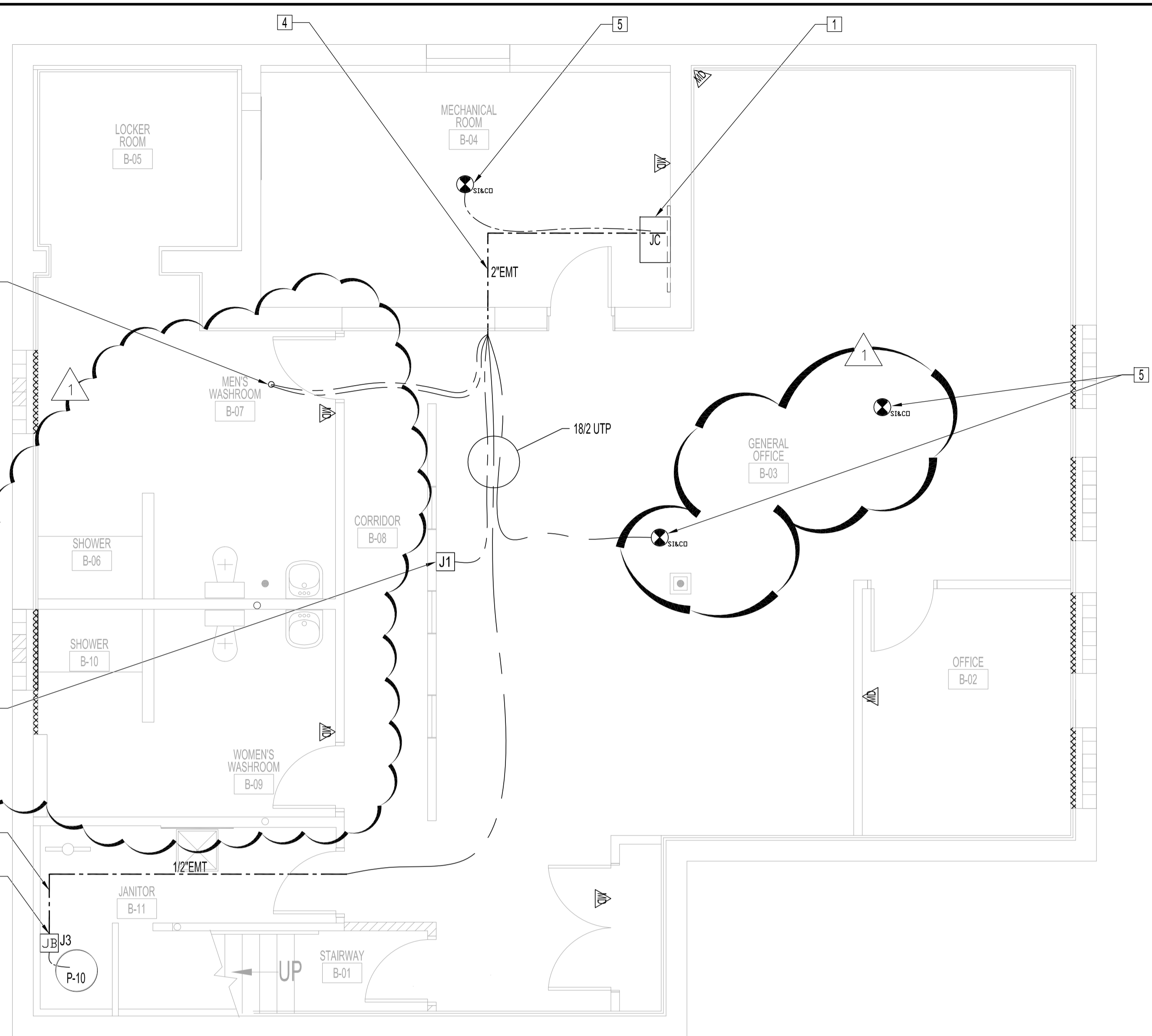
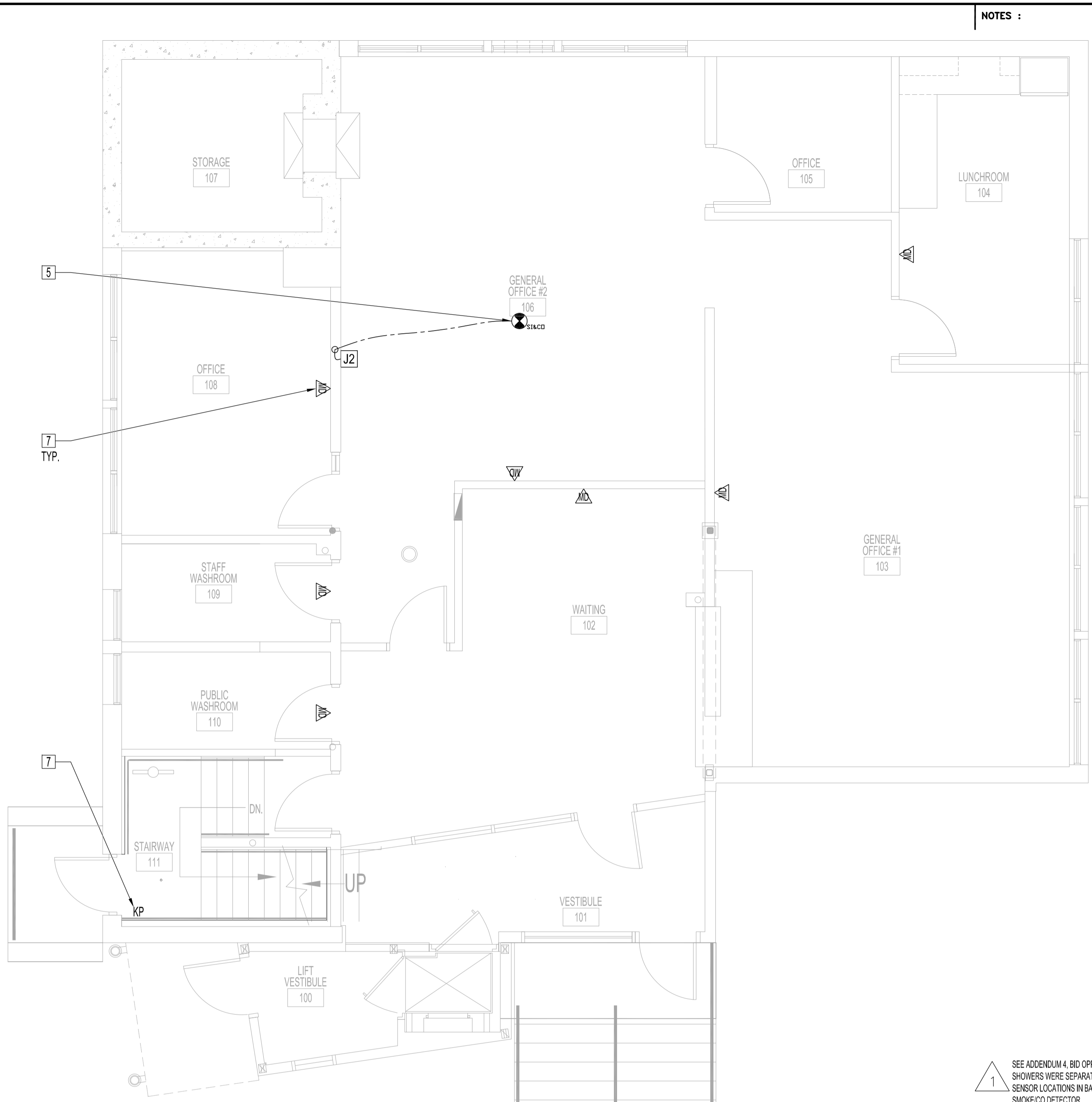


ADDRESS: 1400 HENDERSON HWY. PROJECT No.: 2004-023 DESCRIPTION: BSMT & MAIN FLOOR PLAN - BLDG MONITORING SYSTEM & SECURITY SYSTEM DATE: 2007-10-10 FILE NAME: 2004023VT1.dwg T2R1



BASEMENT FLOOR PLAN
SCALE: 1/4"=1'-0"



MAIN FLOOR PLAN
SCALE: 1/4"=1'-0"

NOTES :

1 SEE ADDENDUM 4, BID OPPORTUNITY 626-2007, WASHROOMS & SHOWERS WERE SEPARATED BY WALLS. RELOCATED MOTION SENSOR LOCATIONS IN BASEMENT WASHROOMS. ADDED ONE SMOKE/CO DETECTOR. DTA 2007.11.15

LEGEND	
ITEM	DESCRIPTION (SUPPLIED & INSTALLED BY CONTRACTOR, UNLESS OTHERWISE SPECIFIED)
	SMOKE/CO ALARM. SEE ELECTRICAL DRAWING
	MOTION DETECTOR (EXISTING) HANG ABOVE NEW CEILING SPACE TEMPORARY FOR REINSTALLATION BY-OTHERS.
KP	KEY PAD (EXISTING) HANG TEMPORARY FOR REINSTALLATION BY-OTHERS.
JC	JOHNSON CONTROLS - CONTROLLER PANEL ASSEMBLY, NAE 5510-Q. INCLUDES TRANSFORMER, CONTROLLER, MODEM AND UPS. SUPPLIED BY CITY OF WINNIPEG - BUILDING SERVICES DIVISION.
J1	TEMPERATURE SENSOR (NICKEL) J1 & J2 - WALL MOUNT WITH PLASTIC ENCLOSURE, JOHNSON CONTROLS CAT. NO. TE-6314P-1
J3	FLOAT LEVEL SWITCH, DRY CONTACT SWITCH MECHANISM WITH CABLE FLOATS AND CLAMPS. MAGNETROL, MODEL T10-S104-020

BUILDING MONITORING AND SECURITY RENOVATION NOTES

SUPPLY & INSTALL, UNLESS OTHERWISE NOTED.
SEE SPECIFICATIONS.
ALL WIRING TO BE SECURED & ROUTED PARALLEL TO BUILDING STRUCTURE.
ALL OPENINGS THROUGH FIRE ASSEMBLIES ARE TO BE FIRE STOPPED AND SEALED WITH ULC APPROVED FIRE STOPPING TO MAINTAIN THE INTEGRITY OF THE FIRE SEPARATION, AND PROVIDE A SMOKE-TIGHT BARRIER.

- 1 SUPPLY 120V ELECTRICAL POWER TO TRANSFORMER IN CONTROLLER PANEL ASSEMBLY. CONTROLLER PANEL ASSEMBLY (BY-OTHERS) TO BE INSTALLED & SET-UP BY-OTHERS.
- 2 TEMPERATURE SENSOR - WIRE TO EXIT POINT OF 2' EMT ABOVE J.C. AS SHOWN. ALLOW 3 FEET OF EXTRA WIRE LENGTH AT J.C.
- 3 SUMP PIT HIGH-LEVEL DRY CONTACT SWITCH - WIRE TO EXIT POINT OF 2' EMT ABOVE J.C. AS SHOWN. ALLOW 3 FEET OF EXTRA WIRE LENGTH AT J.C.
- 4 ROUTE EMT ALONG WALL AND UNDERSIDE OF STRUCTURAL CEILING TO OUTSIDE OF ROOM, AS SHOWN. FIRE-STOP PENETRATIONS.
- 5 SMOKE/CO ALARM - WIRE TO EXIT POINT OF 2' EMT ABOVE J.C. AS SHOWN. ALLOW 3 FEET OF EXTRA WIRE LENGTH AT J.C.
- 6 CONTINUED FROM DRAWING T1. - WIRE TO EXIT POINT OF 2' EMT ABOVE J.C. AS SHOWN. ALLOW 3 FEET OF EXTRA WIRE LENGTH AT J.C.
- 7 MOTION DETECTORS, KEYPAD, DOOR CONTACTS TO BE REINSTALLED BY-OTHERS.

NO.	REVISION/DESCRIPTION	BY	DATE

DRAWN BY	DTA	CHECKED BY	APPROVED

CITY OF WINNIPEG
PLANNING, PROPERTY & DEVELOPMENT DEPARTMENT
CIVIC ACCOMMODATIONS DIVISION
300 - 65 GARRY ST. R3C 4K4

PROJECT
COMMUNITY POLICE SERVICE CENTRE

1400 HENDERSON HWY.

SHEET TITLE
BASEMENT & MAIN FLOOR PLAN
BUILDING MONITORING SYSTEM
SECURITY SYSTEM

SCALE	PROJECT NO.	SHEET NO.
AS SHOWN	2004-023	T2R1

DRAWING SHEET SIZE: A1 (841mm x 594mm) PLOT 1:1