

**LEGEND**

8'-0" CEILING HEIGHT (VARIES)  
1 CEILING TYPE

24" x 48" ACOUSTIC TILE BY ARMSTRONG "CORTEGA" SECOND LOOK II, 2776, 5/8" THICK MINERAL FIBRE SQUARE EDGE & COLOUR WHITE INCLUDING T-BARS

(BASEMENT FLOOR PLAN ONLY)  
24" x 48" 3/4 HR. FIRE RESISTANT ACOUSTIC TILE BY ARMSTRONG CORTEGA-SECOND LOOK II, 2776, 5/8" THICK MINERAL FIBRE SQUARE EDGE & COLOUR WHITE INCLUDING T-BARS

(BSMNT. CEILING ONLY)  
NEW 5/8" TYPE 'X' GYPSUM BOARD APPLIED TO U/S OF EXISTING WOOD JOISTS OF ENTIRE BASEMENT CEILING & BEAMS INCLUDING ABOVE ACOUSTIC CEILING AREAS & SHOWERS FOR A 3/4 HR. FIRE RATED CEILING

(BASEMENT FLOOR PLAN ONLY)  
NEW 1/2" MDF BOARD (PAINTED) IN WINDOW HEADERS. SEE SECTION FOR DETAILS.

FIRE RATING NOTE: ALL FIRE RATED CEILING PENETRATIONS & JOINTS TO BE SEALED AS REQUIRED FOR A 3/4 HR. FIRE RATING.

**LIGHTING /HVAC LEGEND**  
SEE ELEC. & MECH. DWG. FOR DETAILS

24 x 48 RECESSED OR SURFACE MOUNTED FLUORESCENT (UNLESS NOTED OTHERWISE)

6 x 48 WALL MOUNTED FLUORESCENT  
4 x 48 WALL MOUNTED FLUORESCENT

6 x 48 WALL MOUNTED FLUORESCENT - TO BE RETRIEVED FROM CITY OF WINNIPEG STORAGE. 1 REQUIRED FOR VESTIBULE 100

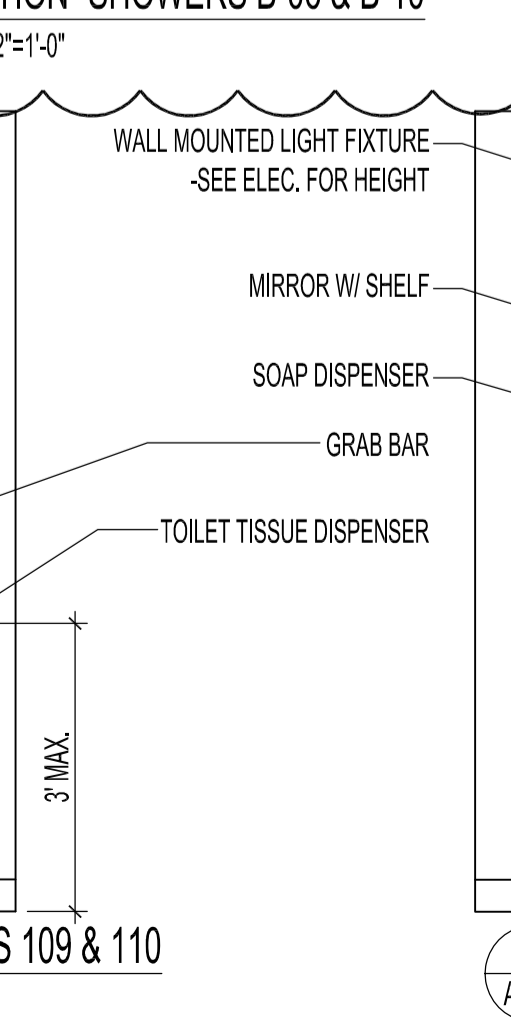
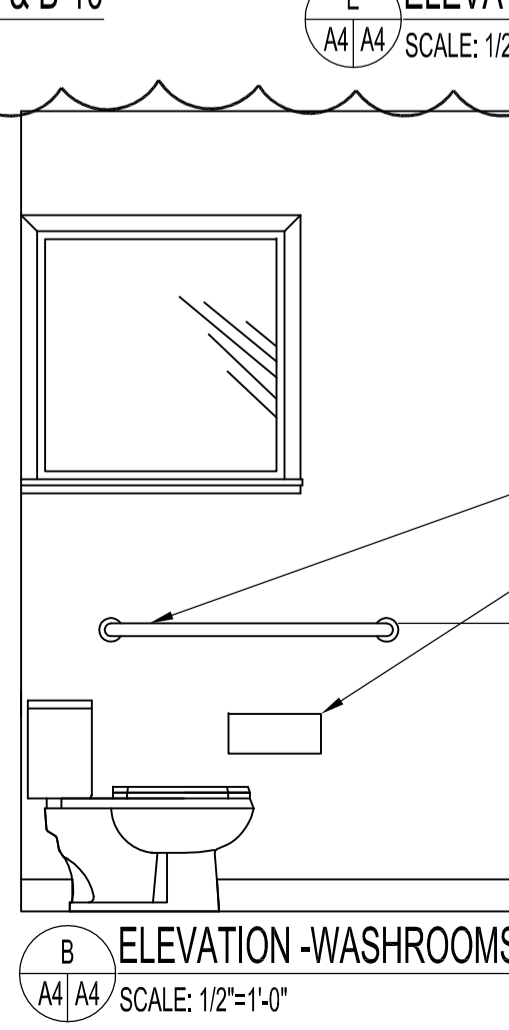
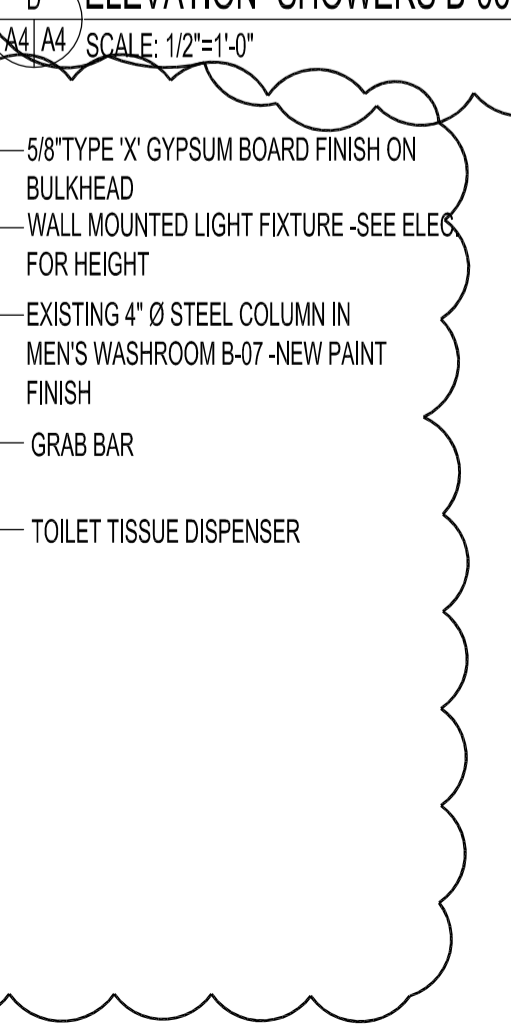
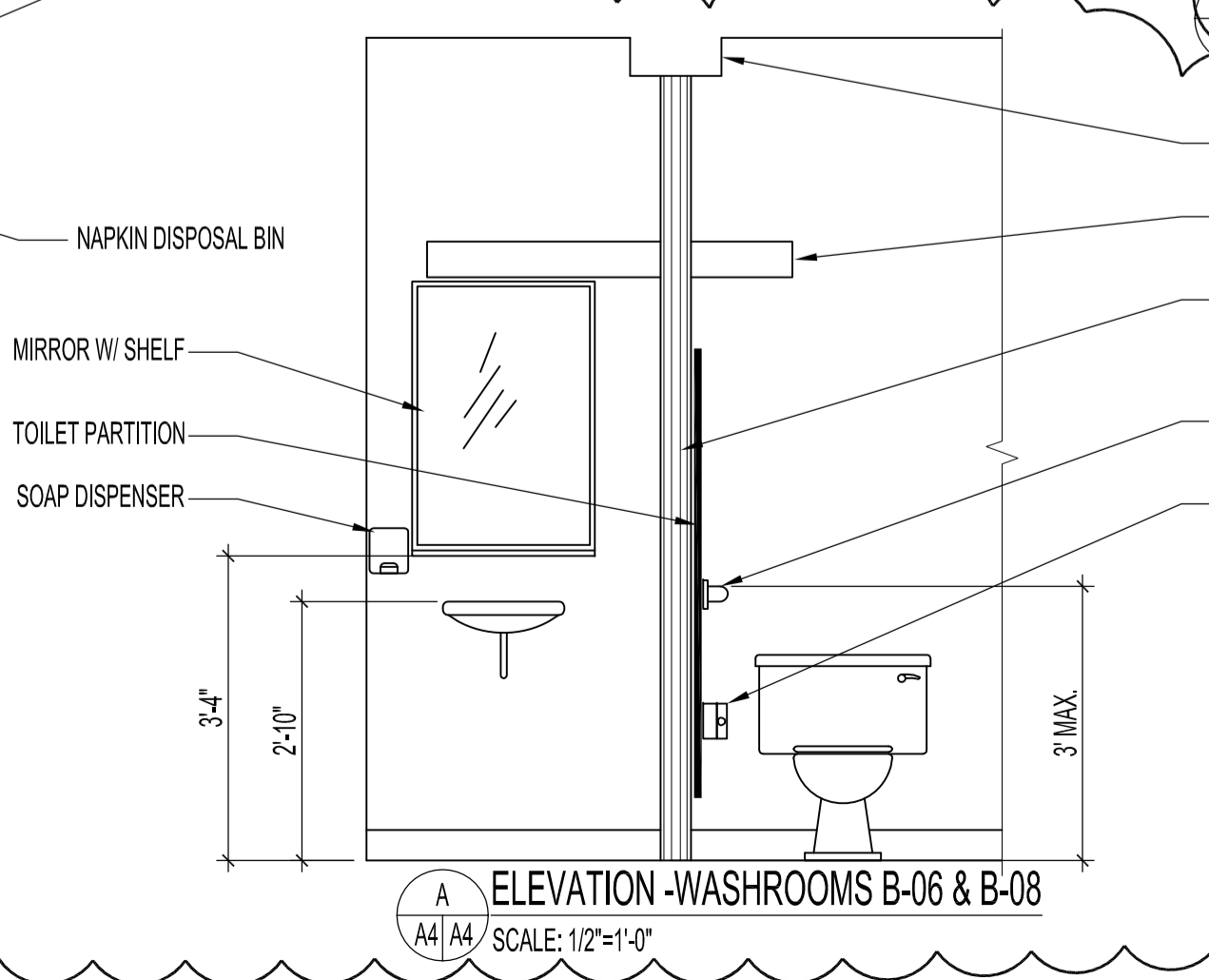
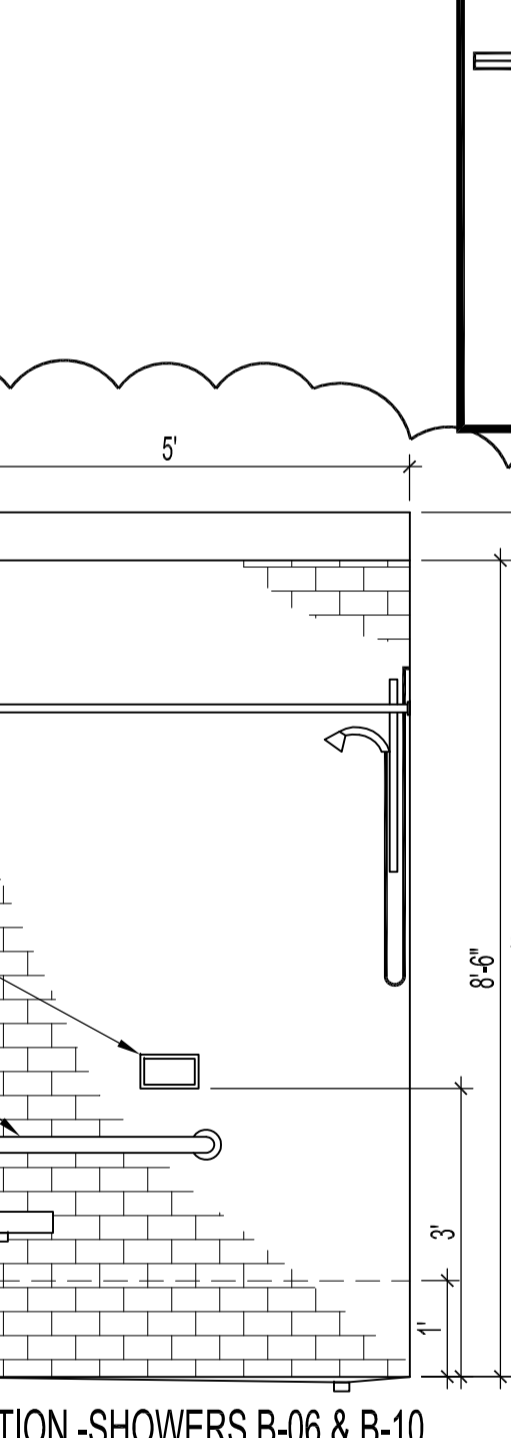
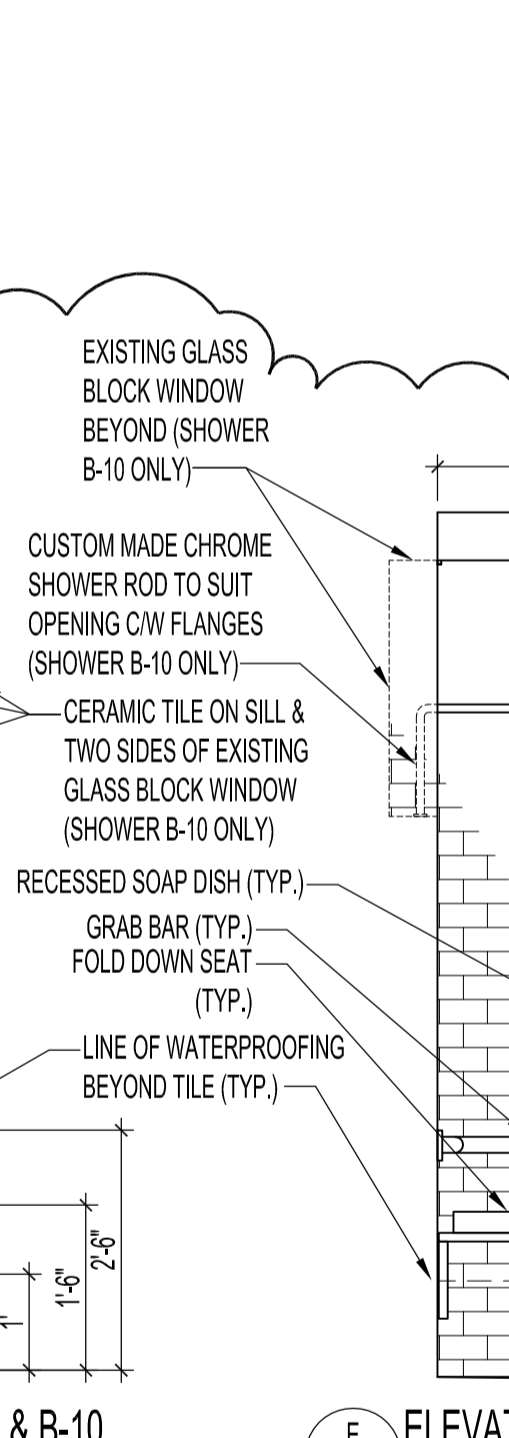
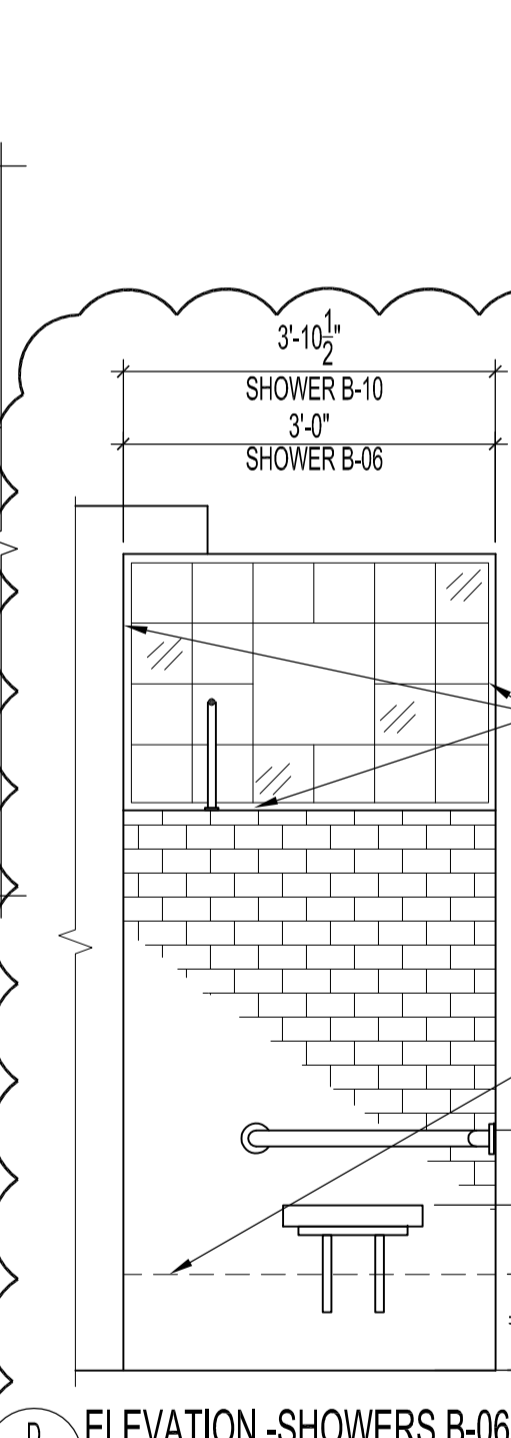
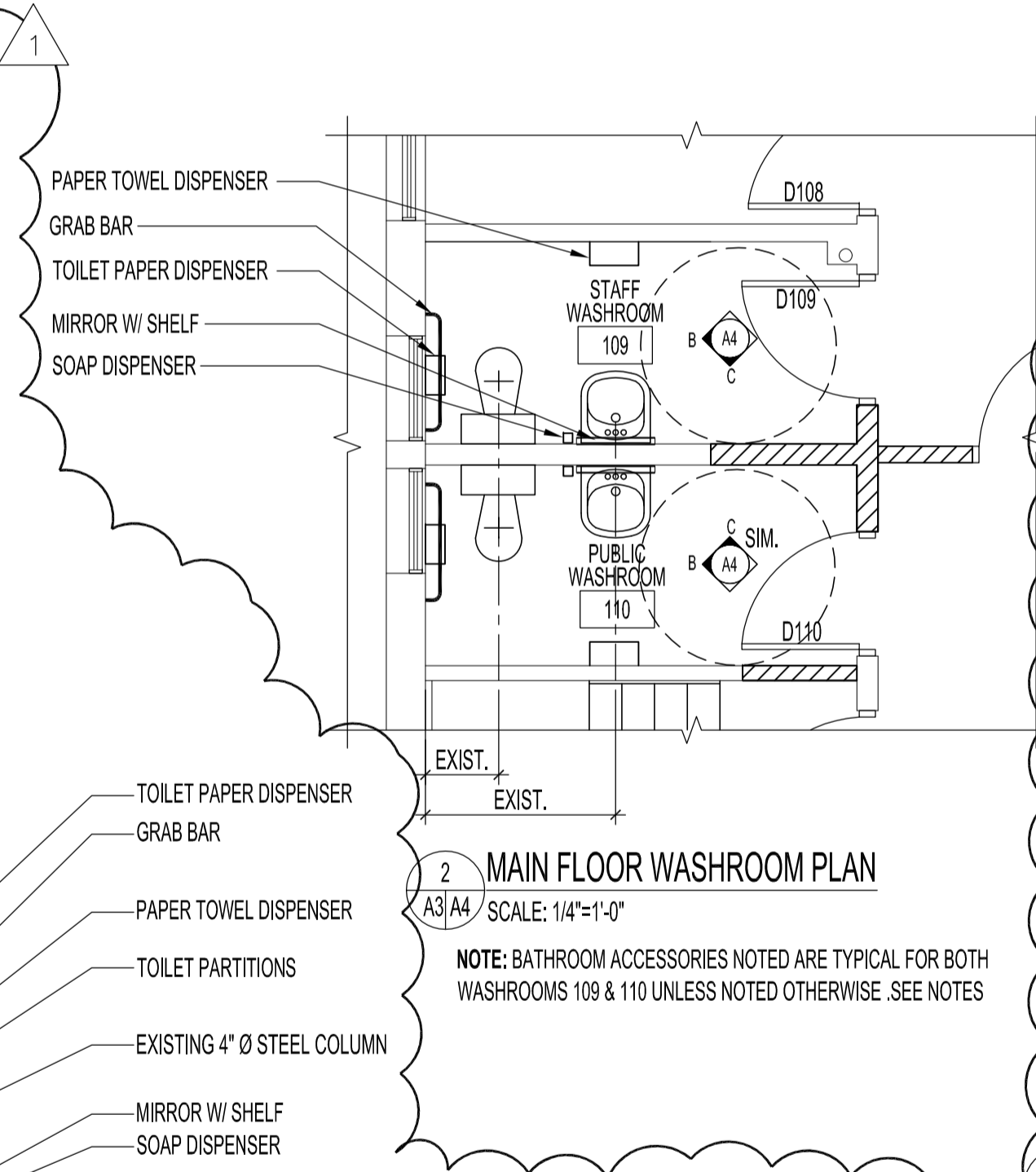
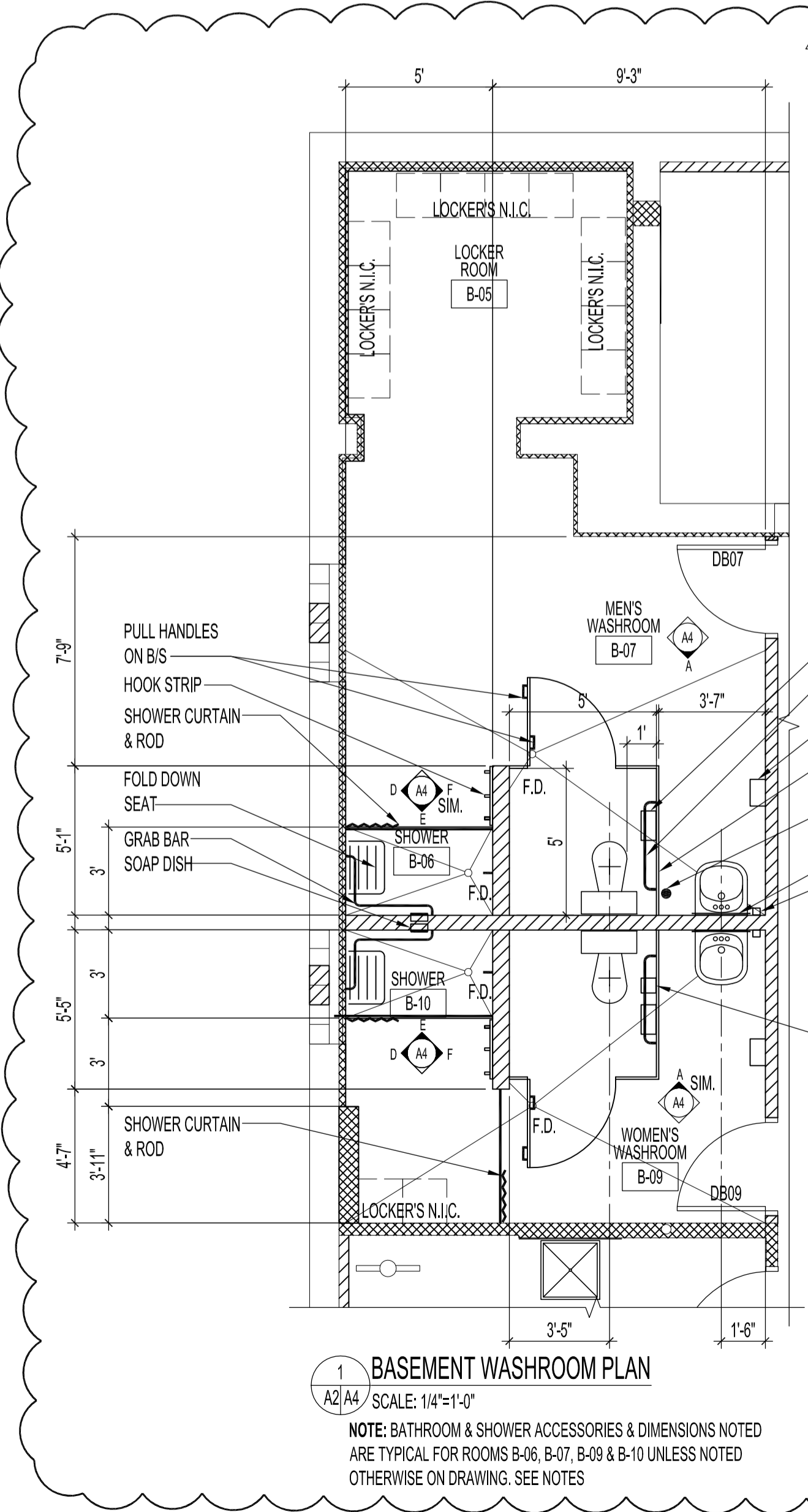
48" WALL MOUNTED FLUORESCENTS FOR INTERIOR OF CABINET OF EXTERIOR BUILDING SIGNAGE - SEE ELEC.

24" UNDER CABINET FLUORESCENT  
SUPPLY AIR DIFFUSERS

EXHAUST RETURN GRILLES

6" INTERIOR POTLIGHTS  
6" EXTERIOR POTLIGHTS  
EXTERIOR WALL MOUNTED LIGHT FIXTURE

- NOTES :**
- ALL ACCESSORIES, PLUMBING FIXTURES TO BE SUPPLIED & INSTALLED AT STANDARD HEIGHTS UNLESS NOTED OTHERWISE.
- ALL ACCESSORIES, PLUMBING FIXTURES IN BARRIER FREE WASHROOMS TO BE INSTALLED TO THE LATEST MANITOBA BUILDING CODE STANDARDS FOR BARRIER-FREE ACCESS.
- PROVIDE WOOD BLOCKING FOR LAVATORY & BATHROOM ACCESSORIES - SEE WALL TYPES
- SUPPLY & INSTALL ONE MALE BARRIER-FREE & ONE FEMALE BARRIER-FREE WASHROOM SIGN FOR MEN'S WASHROOM B-07 & WOMEN'S WASHROOM B-09.
- SUPPLY & INSTALL ONE BARRIER FREE UNISEX WASHROOM SIGN & ONE BARRIER FREE UNISEX WASHROOM SIGN FOR STAFF WASHROOM 109 & PUBLIC WASHROOM 110.
- WASHROOM ACCESSORIES  
SUPPLY & INSTALL ALL ACCESSORIES BY BOBRICK PRODUCTS AS NOTED BELOW:
- GRAB BAR: 36" B-806 (4 REQUIRED)  
(2 REQUIRE GRAB BAR ANCHORS FOR TOILET PARTITIONS)
- MIRROR W/ SHELF: B-166-2436 (4 REQUIRED)
- TOILET PAPER DISPENSER: B-2730 (4 REQUIRED)
- TOWEL BAR: 18" (166) B-7073 (2 REQUIRED)
- FEMININE NAPKIN DISPOSAL BIN: B-270 (1 REQUIRED)  
HOOK STRIPS: 24" (610) B-232 (2 REQUIRED)
- CURTAIN & HOOKS: 204-3 & 204-1 (3 SETS REQUIRED)  
CURTAIN RODS: B-804 60" LENGTH (2 REQUIRED) - SEE ELEVATION FOR OTHER CURTAIN ROD  
FOLDING SHOWER SEATS: B-517 (RIGHT HAND SEAT) & B-518 (LEFT HAND SEAT) (EACH REQUIRED)  
SHOWER GRAB BAR 36" x 24" B-68616 (2 REQUIRED)  
RECESSED SHOWER SOAP DISHES: B-4380 (2 REQUIRED)
- SOAP DISPENSERS: B-5050 MATRIX SERIES (4 REQUIRED)  
PAPER TOWEL DISPENSERS: B-5262 MATRIX SERIES (4 REQUIRED)  
TOILET PARTITIONS: CLASSIC SERIES 1540, COLOUR 1500N GREY
- TOILET PARTITION PULL HANDLES - PROVIDE BARRIER-FREE PULL HANDLES ON B/S OF TOILET PARTITION DOORS (4 REQUIRED)



ORIGINAL STAMPED BY: R.K.FOK LI Arch.  
DATE: 2007.11.15

SEE ADDENDUM 4 BID OPPORTUNITY 629-2007 MMK 2007.11.15  
REVISED WASHROOMS & SHOWERS IN BSMNT.  
REVISED BASEMENT WASHROOM SIGNAGE  
REVISED REFLECTED CEILING PLAN IN BASEMENT  
DELETED FIRE RATED ACOUSTIC CEILING (2)  
REVISED WASHROOM ELEVATIONS  
REVISED WASHROOM & SHOWER ACCESSORIES  
RELOCATED LIFT VESTIBULE LIGHT FIXTURE  
CHANGED LIGHT FIXTURE IN STORAGE TO 24" x 48"

NO.	REVISION/DESCRIPTION	BY	DATE

SEALS

DRAWN BY: MMK CHECKED BY: USER APPROVAL  
DATE: 2007.10.05

CITY OF WINNIPEG  
PLANNING, PROPERTY & DEVELOPMENT DEPARTMENT  
CIVIC ACCOMMODATIONS DIVISION  
300 - 65 GARRY ST. R3C 4K4

PROJECT  
COMMUNITY POLICE SERVICE CENTRE

1400 HENDERSON HIGHWAY

SHEET TITLE  
BASEMENT & MAIN FLOOR PLANS  
REFLECTED CEILING PLANS  
WASHROOM PLANS & ELEVATIONS

SCALE	PROJECT NO.	SHEET NO.
AS SHOWN	2004-023	A4R1

DRAWING SHEET SIZE: A1 (841mm x 594mm) PLOT 1:1