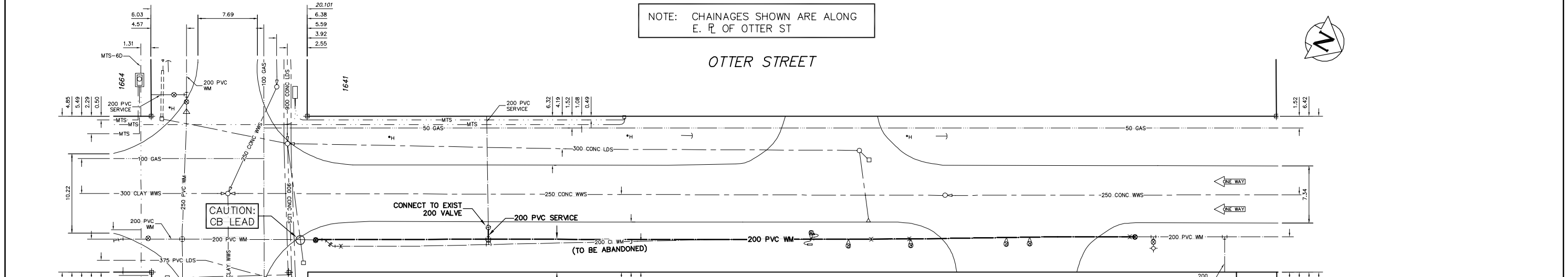


NOTE: CHAINAGES SHOWN ARE ALONG
E. R. OF OTTER ST



WATER SERVICE INFORMATION

ADDRESS	SIZE(mm) & TYPE (STREET)	SIZE(mm) & TYPE (PROP)	SHORT & LONG MEASUREMENT	CORP. LOCATION
40 OTTER ST COMMERCIAL	200	200		TEE (CORP) LOCATED 118.0 N OF NL SEEL AVE
100 OTTER ST COMMERCIAL				
1641 SEEL AVE COMMERCIAL	200	200	OPP SL BLDG	OPP S/C
1664 SEEL AVE COMMERCIAL	200	200	23.22 NNL SEEL	OPP S/C
1664 SEEL AVE COMMERCIAL	200	200	28.67 SEEL BLDG	OPP S/C
1664 SEEL AVE COMMERCIAL	200	200	2.71 WWL OTTER	OPP S/C
1664 SEEL AVE COMMERCIAL	200	200	42.81 EWL BLDG	OPP S/C
1664 SEEL AVE COMMERCIAL	AC	AC	110.96 WWL OTTER	

* SERVICES TO BE RENEWED TO R ALL OTHERS TO BE RECONNECTED

- CONSTRUCTION NOTES**
1. EXPOSE EXISTING WATERMAIN & CONFIRM INVERTS PRIOR TO CONSTRUCTION.
 2. CONFIRM LOCATION OF ALL SERVICES IN THE FIELD.
 3. INSTALL WATERMAIN BY TRENCHLESS METHODS.
 4. TRENCHES AND EXCAVATIONS WITHIN 1 METRE OF A PAVED AREA INCLUDING SIDEWALKS SHALL BE CLASS 3 BACKFILL.
 5. ALL MATERIALS SHALL CONFORM TO THE CITY OF WINNIPEG STANDARD CONSTRUCTION SPECIFICATIONS.
 6. MINIMUM COVER TO TOP OF WATERMAIN SHALL BE 2.4 m.
 7. REPLACE ALL EXISTING LEAD SERVICES FROM PROPOSED WATERMAIN TO R.
 8. NOTIFY ALL AFFECTED RESIDENTS AND BUSINESSES 24 HOURS IN ADVANCE OF ANY WATER SHUTDOWNS OR DISRUPTION OF SERVICE.
 9. EXCAVATIONS TO BE LOCATED AWAY FROM EXISTING TREE'S.

METRIC
WHOLE NUMBERS INDICATE MILLIMETRES
DECIMALIZED NUMBERS INDICATE METRES

NOTE: ALL VALVES TO BE INSTALLED
CLOCKWISE TO CLOSE

WARNING

IF POWER EQUIPMENT OR EXPLOSIVES ARE TO BE USED FOR EXCAVATION ON THIS PROJECT THE CONTRACTOR MUST:

- 1) NOTIFY THE GAS COMPANY OF THE PROPOSED LOCATION OF EXCAVATION.
- 2) TAKE PRECAUTION TO AVOID DAMAGE TO GAS COMPANY INSTALLATIONS.

SEE PROVINCIAL REGULATION 210/72 FOR DETAILS

EXISTING	LEGEND-PLAN	PROPOSED	EXISTING	LEGEND-PLAN	PROPOSED	EXISTING	LEGEND-PROFILE	PROPOSED
⊕	200 WM	⊕	⊕	SL, HYDRO	⊕	⊕	150 WM	⊕
⊕	HYDRANT	⊕	⊕	TRAFFIC SIGNALS	⊕	⊕	HYDRANT	⊕
⊕	VALVE	⊕	⊕	GAS	⊕	⊕	VALVE	⊕
⊕	525 LDS	⊕	⊕	50 GAS	⊕	⊕	LAND DRAINAGE SEWER	⊕
⊕	375 WWS	⊕	⊕	250 WWS	⊕	⊕	300 LDS	⊕
○	MANHOLE	○	○	250 WWS	○	○	250 WWS	○
□	CATCH BASIN	□	□	○	○	○	PROFILE	○
▽	CURB INLET	▽	▽	⊕	⊕	⊕	GROUND ABOVE PIPE	⊕
▽	REDUCER	▽	▽	⊕	⊕	⊕	⊕	⊕
⊕	COUPLER	⊕	⊕	⊕	⊕	⊕	⊕	⊕
⊕	ANODE	⊕	⊕	⊕	⊕	⊕	⊕	⊕

LOCATION APPROVED

UNDERGROUND STRUCTURES

SUPV. U/G STRUCTURES COMMITTEE DATE

NOTE:
LOCATION OF UNDERGROUND STRUCTURES AS SHOWN ARE BASED ON THE BEST INFORMATION AVAILABLE BUT NO GUARANTEE IS GIVEN THAT THE GIVEN LOCATIONS ARE EXACT. CONFIRMATION OF EXISTENCE AND EXACT LOCATION OF ALL SERVICES MUST BE OBTAINED FROM THE INDIVIDUAL UTILITIES BEFORE PROCEEDING WITH CONSTRUCTION.

CITY OF WINNIPEG
WATER AND WASTE
ENGINEERING DIVISION

DESIGNED BY: SGL
CHECKED BY: TW
DRAWN BY: CJH
APPROVED BY: KZ

HOR. SCALE: 1:250
VERTICAL: 1:50

RELEASED FOR CONSTRUCTION

DATE: 2007 08 16

ENGINEER'S SEAL

ORIGINAL SIGNED BY
S.R.J. COURNOYER
07/08/16

BD OPPORTUNITY: 599-2007
FILENAME: D-9250.dwg
PLOT DATE: 2007 08 16

THE CITY OF WINNIPEG
WATER AND WASTE DEPARTMENT

2007 WATERMAIN RENEWALS
CONTRACT 32
OTTER STREET
SEEL AVENUE TO
125 N OF SEEL AVENUE

SHEET 3 OF 3
CITY DRAWING NUMBER
D-9250