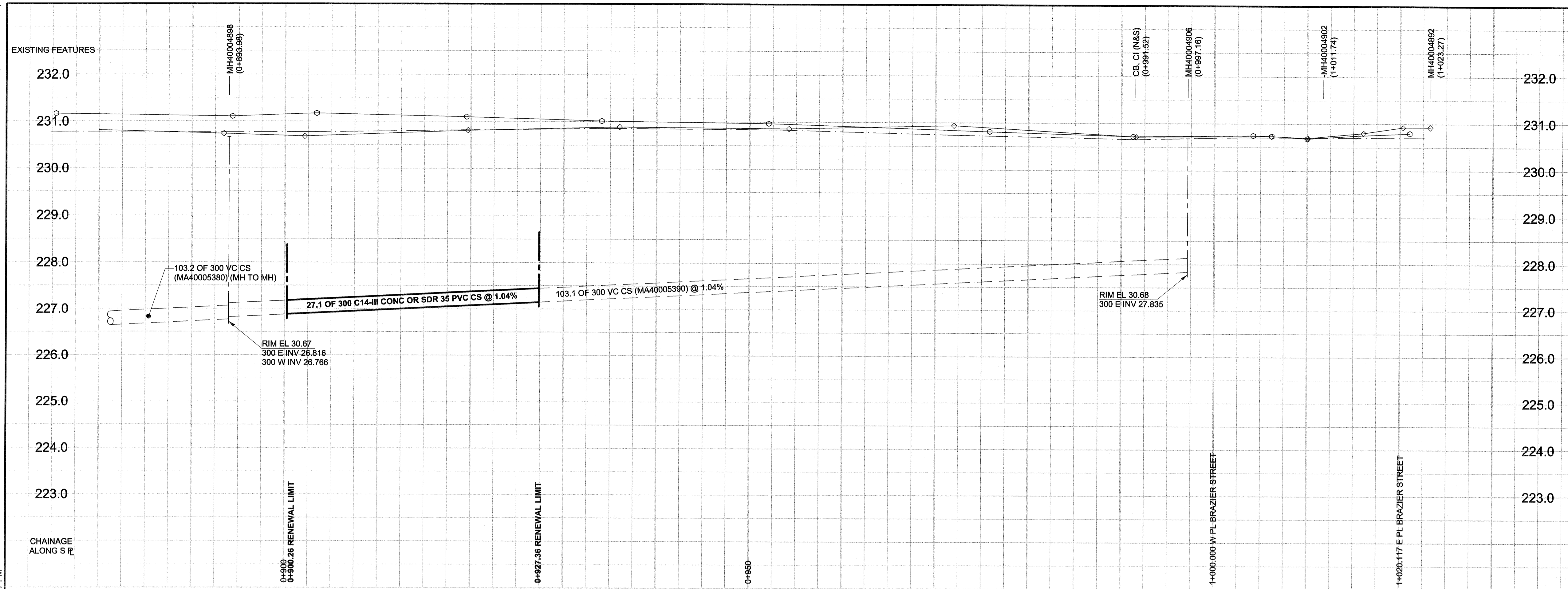


D SIZE 22" x 34" (558mm x 864mm)

PLOT: 07/08/21 2:32:47 PM

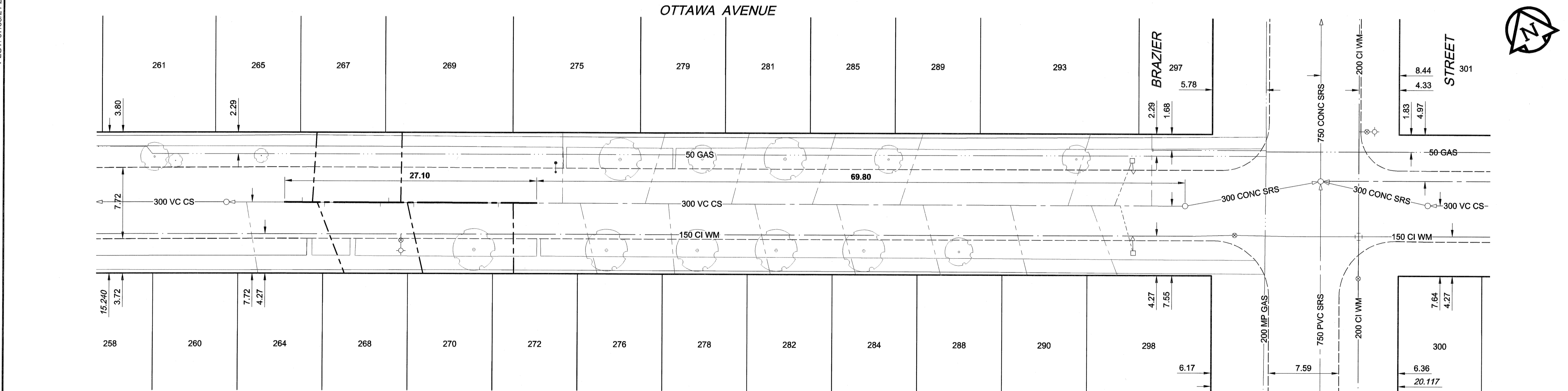
UMA AECOM REVIEW DRFT CHK



WATER SERVICE INFORMATION					
ADDRESS	DISTANCE	SIZE (mm)	SHORT & LONG	CORPORATION CATHODIC PROTECTION	REMARKS
258 OTTAWA AV (RESIDENTIAL)					NO INFO
260 OTTAWA AV (RESIDENTIAL)					NO INFO
261 OTTAWA AV (RESIDENTIAL)					NO INFO
264 OTTAWA AV (RESIDENTIAL)					NO INFO
265 OTTAWA AV (RESIDENTIAL)					NO INFO
267 OTTAWA AV (RESIDENTIAL)					NO INFO
268 OTTAWA AV (RESIDENTIAL)					NO INFO
269 OTTAWA AV (RESIDENTIAL)					NO INFO
270 OTTAWA AV (RESIDENTIAL)					NO INFO
272 OTTAWA AV (RESIDENTIAL)					NO INFO
275 OTTAWA AV (RESIDENTIAL)					NO INFO
276 OTTAWA AV (RESIDENTIAL)					NO INFO
278 OTTAWA AV (RESIDENTIAL)					NO INFO
279 OTTAWA AV (RESIDENTIAL)					NO INFO
281 OTTAWA AV (RESIDENTIAL)					NO INFO
282 OTTAWA AV (RESIDENTIAL)					NO INFO
284 OTTAWA AV (RESIDENTIAL)					NO INFO
285 OTTAWA AV (RESIDENTIAL)					NO INFO
288 OTTAWA AV (RESIDENTIAL)					NO INFO
289 OTTAWA AV (RESIDENTIAL)					NO INFO
290 OTTAWA AV (RESIDENTIAL)					NO INFO
293 OTTAWA AV (RESIDENTIAL)					NO INFO
298 OTTAWA AV (RESIDENTIAL)					NO INFO
300 OTTAWA AV (RESIDENTIAL)					NO INFO
301 OTTAWA AV (RESIDENTIAL)					NO INFO

SEWER SERVICE INFORMATION				
ADDRESS	SIZE	PL TIE (SHORT/LONG)	JUNCTION TIE	REMARKS
258 OAKVIEW AV				NO INFO
260 OAKVIEW AV				NO INFO
261 OAKVIEW AV				NO INFO
264 OAKVIEW AV				NO INFO
265 OAKVIEW AV				NO INFO
267 OAKVIEW AV				NO INFO
268 OAKVIEW AV			11.0 E OF 2ND MH E OF HENDERSON HWY	NO INFO
269 OAKVIEW AV				NO INFO
270 OAKVIEW AV				NO INFO
272 OAKVIEW AV				NO INFO
275 OAKVIEW AV				NO INFO
276 OAKVIEW AV				NO INFO
278 OAKVIEW AV				NO INFO
279 OAKVIEW AV				NO INFO
281 OAKVIEW AV				NO INFO
282 OAKVIEW AV				NO INFO
284 OAKVIEW AV				NO INFO
285 OAKVIEW AV				NO INFO
288 OAKVIEW AV				NO INFO
289 OAKVIEW AV				NO INFO
290 OAKVIEW AV				NO INFO
293 OAKVIEW AV				NO INFO
298 OAKVIEW AV				NO INFO
300 OAKVIEW AV				NO INFO
301 OAKVIEW AV				NO INFO

SEWER JUNCTION INFORMATION				
REF. MH	DIST FROM REF. MH	SIZE	CLOCK AT*	
MH40004906	3.60	1000	02	
MH40004906	7.00	2500	09	
MH40004906	7.60	2500	03	
MH40004906	10.10	1500	10	
MH40004906	12.60	1000	02	
MH40004906	18.80	1000	10	
MH40004906	28.20	1500	10	
MH40004906	30.70	1000	01	
MH40004906	37.50	1500	10	
MH40004906	40.10	1000	02	
MH40004906	46.30	1500	10	
MH40004906	48.80	1000	02	
MH40004906	55.60	1000	10	
MH40004906	58.10	1000	01	
MH40004906	65.10	1000	10	
MH40004906	67.00	1000	01	
MH40004906	73.90	1000	10	
MH40004906	83.00	1000	10	
MH40004906	85.70	1000	02	
MH40004906	86.60	1000	11	
MH40004906	92.60	1000	10	
MH40004906	95.00	1000	02	
MH40004906	101.00	1000	11	



WARNING
 IF POWER EQUIPMENT OR EXPLOSIVES ARE TO BE USED FOR EXCAVATION ON THIS PROJECT, THE CONTRACTOR MUST:
 1) NOTIFY THE GAS COMPANY OF THE PROPOSED LOCATION OF EXCAVATION.
 2) TAKE PRECAUTION TO AVOID DAMAGE TO GAS COMPANY INSTALLATIONS.
 SEE PROVINCIAL REGULATION 140/92 FOR DETAILS

METRIC
 WHOLE NUMBERS INDICATE MILLIMETRES
 DECIMALIZED NUMBERS INDICATE METRES

LOCATION APPROVED
 UNDERGROUND STRUCTURES
 SUPR. U/G STRUCTURES DATE COMMITTEE
 NOTE:
 LOCATION OF UNDERGROUND STRUCTURES AS SHOWN ARE BASED ON THE BEST INFORMATION AVAILABLE. BUT NO GUARANTEE IS GIVEN THAT ALL EXISTING UTILITIES ARE SHOWN OR THAT THE GIVEN LOCATIONS ARE EXACT. CONFIRMATION OF EXISTENCE AND EXACT LOCATION OF ALL SERVICES MUST BE OBTAINED FROM THE INDIVIDUAL UTILITIES BEFORE PROCEEDING WITH CONSTRUCTION.

BM 27-025 ELEV 230.782m	S.E. Cor. Brazier St. & Washington Ave., Tbl. on top of 0.05m dia. x 2.4m iron pipe, 1.8m N. of S.L. of Washington Ave. & on E.L. of Brazier St.
DESIGNED BY	MJR
CHECKED BY	[Signature]
DRAWN BY	KMB
APPROVED BY	[Signature]
HOR. SCALE	1:250
VERT. SCALE	1:50
DATE	07/08/21
ISSUED FOR CONSTRUCTION	07/08/21
NO. REVISIONS	YY/MM/DD BY

APEGM
 Certificate of Authorization
 UMA Engineering Ltd. (MB)
 No. 256 Date: 07/08/21

PROFESSIONAL'S SEAL
 PROVINCE OF MANITOBA
 21 Aug 2021
 C.C. MACEY
 REGISTERED ENGINEER
 CONSULTANT DRAWING NO. 28
 D2865-217-03

- CONSTRUCTION NOTES:**
1. INSTALL NEW SEWER BY TRENCHLESS METHODS
 2. RENEW SEWER SERVICES TO PROPERTY LINE.
 3. ALL SEWER AND WATER SERVICES TO BE LOCATED IN THE FIELD BY THE CONTRACTOR
 4. ABANDON EXISTING SEWER & SEWER SERVICES

BID OPPORTUNITY NO. 573-2007

THE CITY OF WINNIPEG
WATER AND WASTE DEPARTMENT

2007 COMBINED SEWER RENEWALS
BY EXTERNAL POINT REPAIRS AND REPLACEMENTS
CONTRACT 15
 OTTAWA AVENUE
 178m E OF HENDERSON HIGHWAY
 TO BRAZIER STREET

SHEET 28 OF 29
 CITY DRAWING NUMBER
06156
 REV 0

EXISTING	LEGEND - PLAN	NEW	EXISTING	LEGEND - PLAN	NEW	EXISTING	LEGEND - PROFILE	NEW
150 WM	WATERMAIN	150 WM	CURB STOP	150 WM	WATERMAIN	150 WM	WATERMAIN	150 WM
300 LDS	LAND DRAINAGE SEWER	300 LDS	REDUCER	300 LDS	LAND DRAINAGE SEWER	300 LDS	HYDRANT	300 LDS
250 WWS	WASTE WATER SEWER	250 WWS	COUPLING	250 WWS	WASTE WATER SEWER	250 WWS	VALVE	250 WWS
MANHOLE	MANHOLE	ANODE	ANODE	ANODE	LAND DRAINAGE SEWER	ANODE	VALVE	ANODE
CATCH BASIN	CATCH BASIN	HYDRO	HYDRO	HYDRO	WASTE WATER SEWER	HYDRO	VALVE	HYDRO
CURB INLET	CURB INLET	MTS	MTS	MTS	PAVEMENT CROWN	MTS	VALVE	MTS
CULVERT	CULVERT	GAS	GAS	GAS	N/W PROPERTY LINE	GAS	VALVE	GAS
PIPE ABANDONMENTS	PIPE ABANDONMENTS	TESTHOLE	TESTHOLE	TESTHOLE	S/E PROPERTY LINE	TESTHOLE	VALVE	TESTHOLE
SURVEY BAR	SURVEY BAR	LAMP STANDARD	LAMP STANDARD	LAMP STANDARD	N/W GUTTER	LAMP STANDARD	VALVE	LAMP STANDARD
		TREE	TREE	TREE	S/E GUTTER	TREE	VALVE	TREE