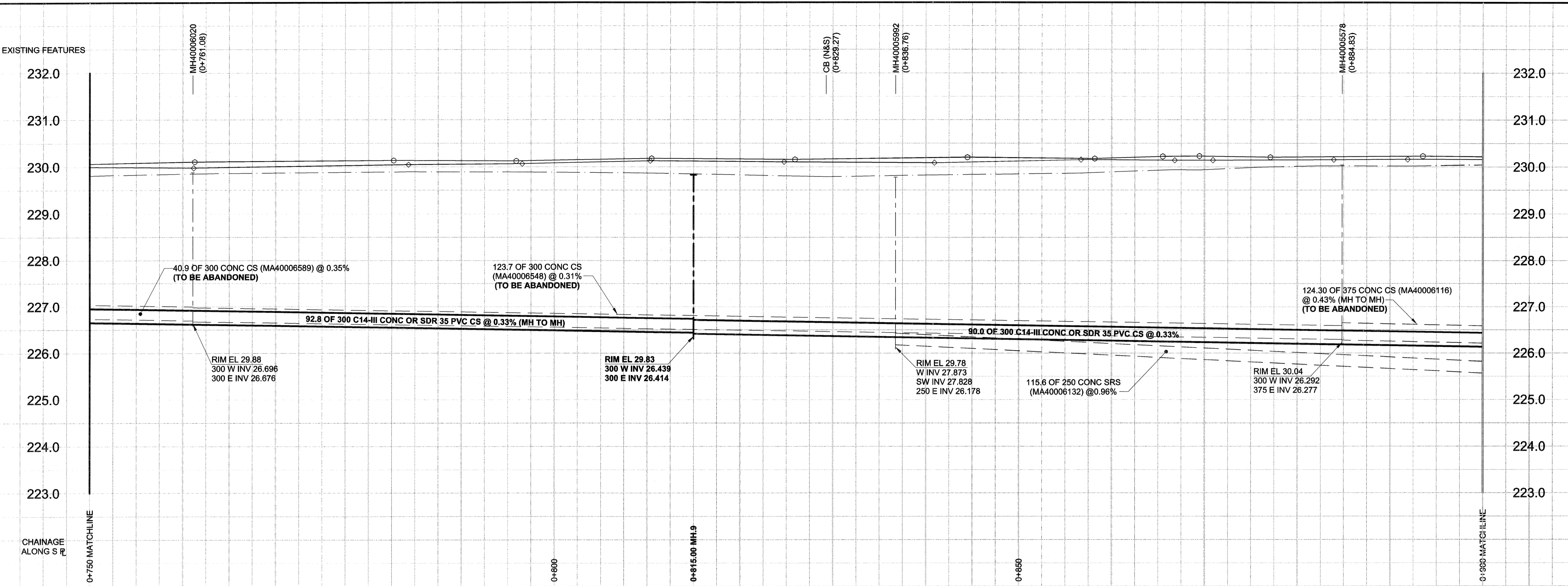


D SIZE 22" x 34" (559mm x 864mm)

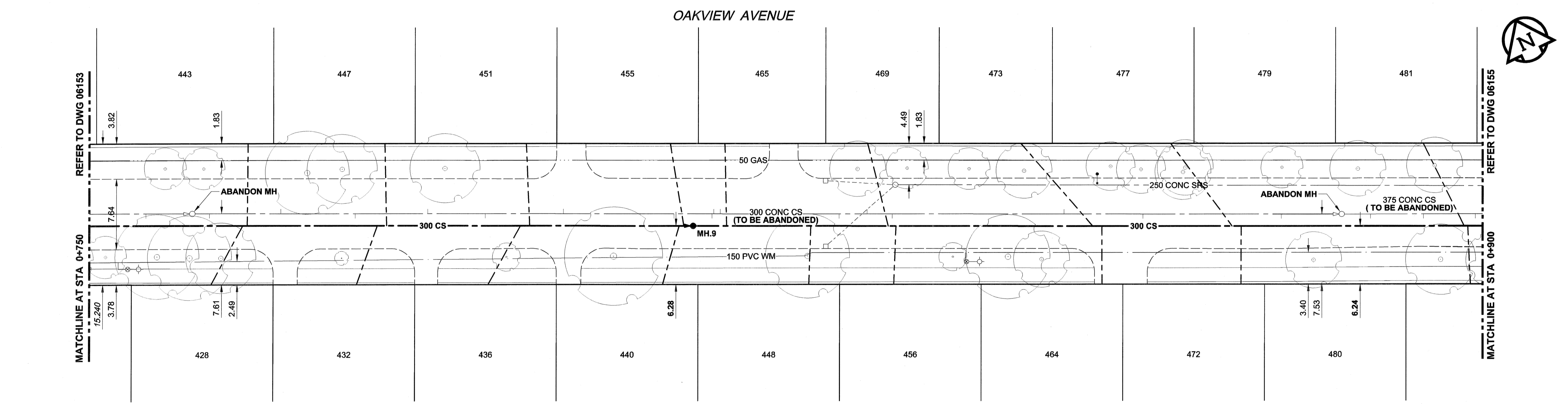
PLOT: 07/08/21 2:31:31 PM

UMA/AECOM REVIEW DRFT CHK AAL
UMA FILE NAME: D265-217-03_00-C-1026_RX.dwg Saved By: liberrand



WATER SERVICE INFORMATION					
ADDRESS	DISTANCE	SIZE (mm)	SHORT & LONG CORPORATION	CATHODIC PROTECTION	REMARKS
428 OAKVIEW ST (RESIDENTIAL)					NO INFO
432 OAKVIEW ST (RESIDENTIAL)					NO INFO
436 OAKVIEW ST (RESIDENTIAL)					NO INFO
439 OAKVIEW ST (RESIDENTIAL)					NO INFO
440 OAKVIEW ST (RESIDENTIAL)					NO INFO
443 OAKVIEW ST (RESIDENTIAL)					NO INFO
447 OAKVIEW ST (RESIDENTIAL)					NO INFO
448 OAKVIEW ST (RESIDENTIAL)					NO INFO
451 OAKVIEW ST (RESIDENTIAL)					NO INFO
455 OAKVIEW ST (RESIDENTIAL)					NO INFO
456 OAKVIEW ST (RESIDENTIAL)					NO INFO
464 OAKVIEW ST (RESIDENTIAL)					NO INFO
465 OAKVIEW ST (RESIDENTIAL)					NO INFO
469 OAKVIEW ST (RESIDENTIAL)					NO INFO
472 OAKVIEW ST (RESIDENTIAL)					NO INFO
473 OAKVIEW ST (RESIDENTIAL)					NO INFO
477 OAKVIEW ST (RESIDENTIAL)					NO INFO
479 OAKVIEW ST (RESIDENTIAL)					NO INFO
480 OAKVIEW ST (RESIDENTIAL)					NO INFO
481 OAKVIEW ST (RESIDENTIAL)					NO INFO

SEWER SERVICE INFORMATION			
ADDRESS	SIZE	PL. TIE	REMARKS
428 OAKVIEW ST	116.7 W OF 1ST MH W OF WATT ST		
432 OAKVIEW ST	107.3 W OF 1ST MH W OF WATT ST		
435 OAKVIEW ST	22.6 W OF 2ND MH W OF WATT ST		
436 OAKVIEW ST	88.6 W OF 1ST MH W OF WATT ST		
439 OAKVIEW ST	7.0 W OF 2ND MH W OF WATT ST		
440 OAKVIEW ST	77.1 W OF 1ST MH W OF WATT ST		
443 OAKVIEW ST	116.1 W OF 1ST MH W OF WATT ST		
447 OAKVIEW ST	31.7 W OF 1ST MH W OF WATT ST		
448 OAKVIEW ST	55.5 W OF 1ST MH W OF WATT ST		
451 OAKVIEW ST	98.1 W OF 1ST MH W OF WATT ST		
455 OAKVIEW ST	70.1 W OF 1ST MH W OF WATT ST		
456 OAKVIEW ST	39.9 W OF 1ST MH W OF WATT ST		
464 OAKVIEW ST	25.3 W OF 1ST MH W OF WATT ST		
465 OAKVIEW ST	70.1 W OF 1ST MH W OF WATT ST		
469 OAKVIEW ST	43.3 W OF 1ST MH W OF WATT ST		
472 OAKVIEW ST	9.8 W OF 1ST MH W OF WATT ST		
473 OAKVIEW ST	31.7 W OF 1ST MH W OF WATT ST		
477 OAKVIEW ST	13.7 W OF 1ST MH W OF WATT ST		
479 OAKVIEW ST	4.7 W OF 1ST MH W OF WATT ST		
480 OAKVIEW ST			NO INFO
481 OAKVIEW ST	110.3 W OF MH W AT WATT ST		



SEWER JUNCTION INFORMATION			
REF. MH*	DIST FROM*	SIZE*	CLOCK AT*
MH40005578	6.50	1500	09
MH40005578	21.40	1500	10
MH40005578	29.90	1500	03
MH40005578	48.40	1500	10
MH40005578	51.10	1500	02
MH40005578	54.10	1500	10
MH40005578	65.90	1500	01
MH40005578	67.80	1500	02
MH40005578	67.80	1500	10
MH40005578	71.90	1500	10
MH40005578	83.80	1500	02
MH40005578	92.20	1500	10
MH40005578	98.40	1500	02
MH40005578	106.20	1500	10
MH40005578	114.20	1500	03
MH40005578	121.90	1500	09

*JUNCTION LOCATION FROM VIDEO INSPECTION

WARNING
IF POWER EQUIPMENT OR EXPLOSIVES ARE TO BE USED FOR EXCAVATION ON THIS PROJECT, THE CONTRACTOR MUST:
1) NOTIFY THE GAS COMPANY OF THE PROPOSED LOCATION OF EXCAVATION.
2) TAKE PRECAUTION TO AVOID DAMAGE TO GAS COMPANY INSTALLATIONS.
SEE PROVINCIAL REGULATION 140/92 FOR DETAILS

150 WM		150 WM		150 WM		150 WM		150 WM	
○	HYDRANT	○	HYDRANT	○	HYDRANT	○	HYDRANT	○	HYDRANT
○	VALVE	○	VALVE	○	VALVE	○	VALVE	○	VALVE
○	LAND DRAINAGE SEWER	○	LAND DRAINAGE SEWER	○	LAND DRAINAGE SEWER	○	LAND DRAINAGE SEWER	○	LAND DRAINAGE SEWER
○	WASTE WATER SEWER	○	WASTE WATER SEWER	○	WASTE WATER SEWER	○	WASTE WATER SEWER	○	WASTE WATER SEWER
○	MANHOLE	○	MANHOLE	○	MANHOLE	○	MANHOLE	○	MANHOLE
○	CATCH BASIN	○	CATCH BASIN	○	CATCH BASIN	○	CATCH BASIN	○	CATCH BASIN
○	CURB INLET	○	CURB INLET	○	CURB INLET	○	CURB INLET	○	CURB INLET
○	CULVERT	○	CULVERT	○	CULVERT	○	CULVERT	○	CULVERT
○	PIPE ABANDONMENTS	○	PIPE ABANDONMENTS	○	PIPE ABANDONMENTS	○	PIPE ABANDONMENTS	○	PIPE ABANDONMENTS
○	SURVEY BAR	○	SURVEY BAR	○	SURVEY BAR	○	SURVEY BAR	○	SURVEY BAR
○	EXISTING	○	NEW	○	EXISTING	○	NEW	○	EXISTING

METRIC
WHOLE NUMBERS INDICATE MILLIMETRES
DECIMALIZED NUMBERS INDICATE METRES

LOCATION APPROVED
UNDERGROUND STRUCTURES
SUPR. U/G STRUCTURES DATE COMMITTEE
NOTE:
LOCATION OF UNDERGROUND STRUCTURES AS SHOWN ARE BASED ON THE BEST INFORMATION AVAILABLE. BUT NO GUARANTEE IS GIVEN THAT ALL EXISTING UTILITIES ARE SHOWN OR THAT THE GIVEN LOCATIONS ARE EXACT. CONFIRMATION OF EXISTENCE AND EXACT LOCATION OF ALL SERVICES MUST BE OBTAINED FROM THE INDIVIDUAL UTILITIES BEFORE PROCEEDING WITH CONSTRUCTION.

NO.	REVISIONS	YY/MM/DD	BY
0	ISSUED FOR CONSTRUCTION	07/08/21	KMB

DESIGNED BY	CHECKED BY
MJR	WJ
DRAWN BY	APPROVED BY
KMB	[Signature]
HOR. SCALE	RELEASED FOR CONSTRUCTION
1:250	[Signature]
VERT. SCALE	DATE
1:50	07/08/21

UMA AECOM
Certificate of Authorization
UMA Engineering Ltd. (MB)
No. 256 Date: 07/08/21

THE CITY OF WINNIPEG
WATER AND WASTE DEPARTMENT
2007 COMBINED SEWER RENEWALS
BY EXTERNAL POINT REPAIRS AND REPLACEMENTS
CONTRACT 15
OAKVIEW AVENUE
STA 0+750 TO STA 0+900

PROFESSIONAL'S SEAL
C.C. MACEY
REGISTERED ENGINEER
D265-217-03

SHEET 26 OF 29
CITY DRAWING NUMBER
06154
REV 0

BID OPPORTUNITY NO. 573-2007

- CONSTRUCTION NOTES:**
1. INSTALL NEW SEWER BY TRENCHLESS METHODS
 2. RENEW SEWER SERVICES TO PROPERTY LINE.
 3. ALL SEWER AND WATER SERVICES TO BE LOCATED IN THE FIELD BY THE CONTRACTOR
 4. ABANDON EXISTING SEWER & SEWER SERVICES