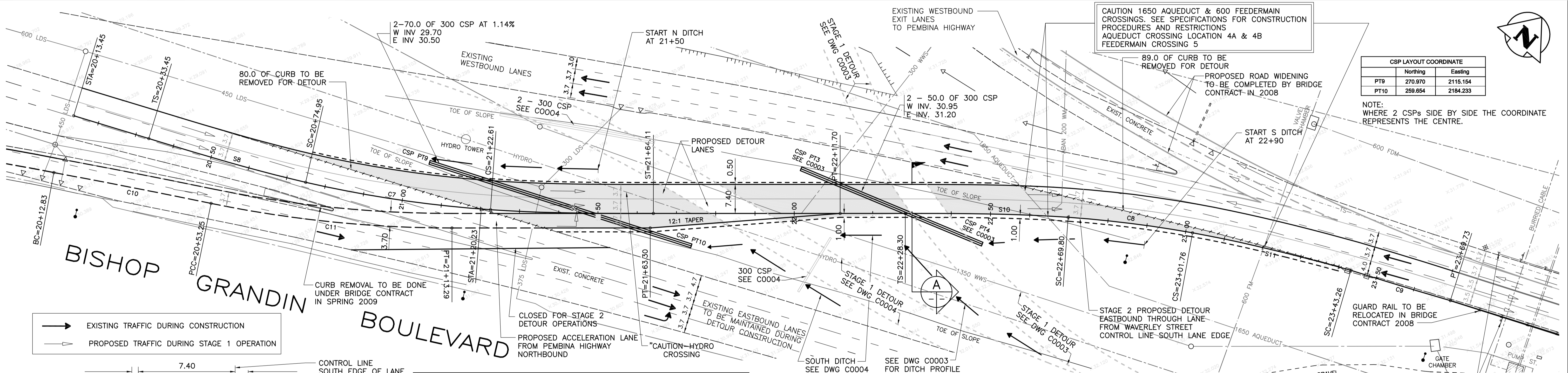


**STAGE 2 PROPOSED EXIT LANE**  
From Pembina Highway Northbound  
Control Line = Proposed Detour S Edge Lane

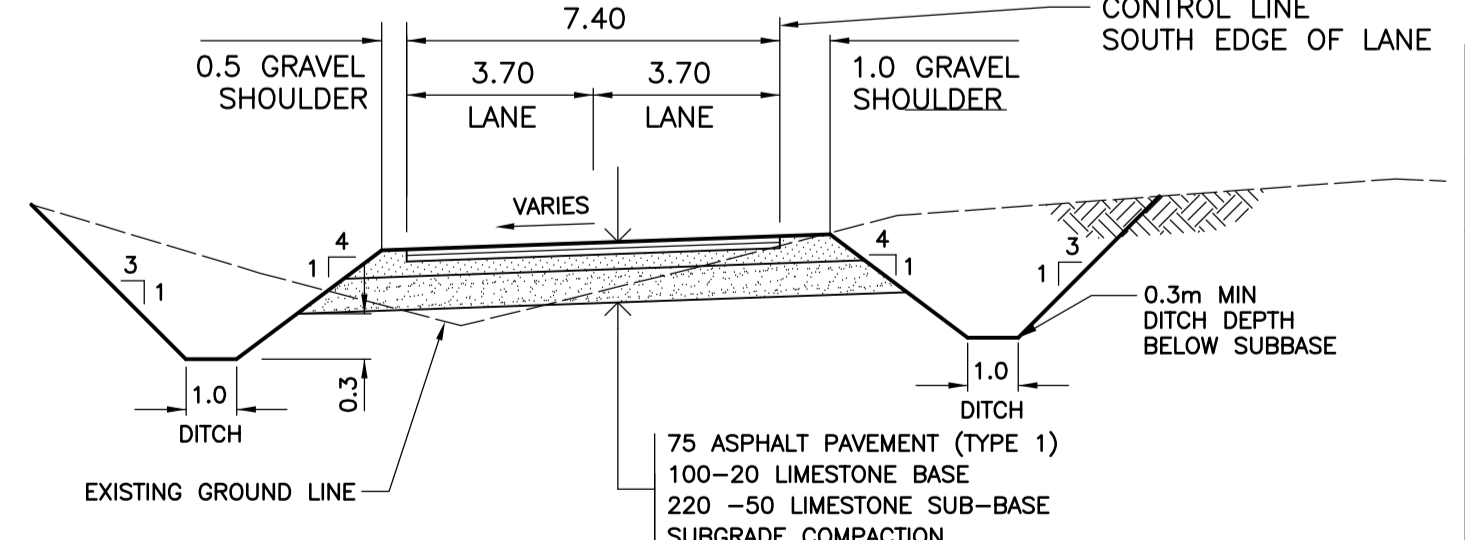
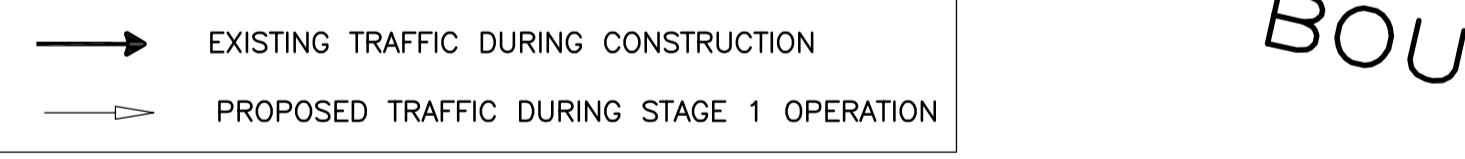
Control Point	Station	Coordinate		Parameter	Curve Data	
		Northing	Easting		C10	C11
BC	20+12.83	254.415	2020.846	R	2082.10	303.70
PCC	20+53.25	252.495	2061.611	Δ	1°07'23"	11°39'29"
PT	21+13.29	255.261	2123.236	Tan	20.41	31.00
PT	21+63.30	262.639	2173.199	L	40.81	61.79
PT	22+11.70	273.367	2220.533			



**CSP LAYOUT COORDINATE**

	Northing	Easting
PT9	270.970	2115.154
PT10	259.654	2184.233

NOTE: WHERE 2 CSPs SIDE BY SIDE THE COORDINATE REPRESENTS THE CENTRE.



**1** DETOUR ROAD SECTION AT STA 22+30  
HOR 1:150, VER 1:50

**STAGE 2 PROPOSED DETOUR**  
Aligned with Bishop Grandin Boulevard  
Detour Road Control Line = S Edge of Lane

Control Point	Station	Coordinate		Parameter	Curve Data		
		Northing	Easting		C7	C8	C9
STA	20+13.45	269.478	2023.725	R	302.40	295.00	1000.00
TS	20+33.45	266.524	2043.506	Δ	9°01'49"	6°12'20"	1°31'00"
SC	20+74.95	261.336	2084.671	Tan	23.88	15.99	13.24
STA	21+20.23	261.120	2129.912	L	47.68	31.95	26.47
CS	21+22.61	261.296	2132.283				
ST	21+64.11	266.417	2173.458				
TS	22+28.30	275.794	2236.962	R	302.40	295.00	295.00
SC	22+69.80	280.891	2278.138	L	41.50	41.50	41.50
CS	23+01.76	281.597	2310.066	Theta	3°56'53"	4°01'48"	5°13'08"
SC	23+43.26	278.039	2361.398	P	0.24	0.24	0.32
PT	23+69.73	274.107	2377.573	K	20.75	20.75	14.62
				A	112.02	110.65	131.78

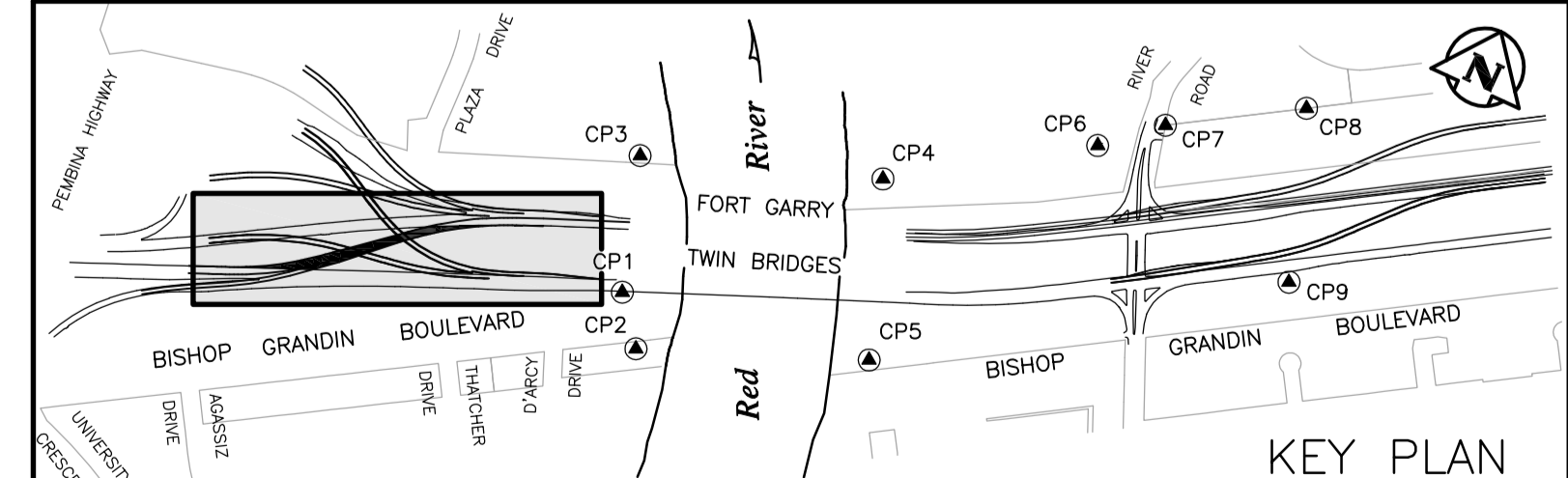
**Coordinate Control Survey Monuments**

No.	Wardrop Coordinate		NAD 83 Grid Coordinate		Description
	Northing	Easting	Northing	Easting	
CP1	200.457	2451.508	5520387.945	633474.139	GBM 76-026
CP2	143.191	2457.394	5520340.999	633507.459	BRASS CAP
CP3	324.616	2489.426	5520514.681	633446.010	BRASS CAP

NOTE: EASTBOUND DETOUR  
DESIGN SPEED 70km/hr  
POSTED ADVISORY SPEED 60km/hr

NOTE: CONTRACTOR TO PROVIDE CITY OF WINNIPEG 48 HOURS NOTICE PRIOR TO CROSSING OR WORKING IN VICINITY OF 1650 AQUEDUCT.

**APEGM**  
Certificate of Authorization  
Wardrop Engineering Inc.  
No. 195 Expiry: April 30, 2008



EXISTING	LEGEND-PLAN	PROPOSED	EXISTING	LEGEND-PLAN	PROPOSED	EXISTING	LEGEND-PLAN	PROPOSED
150 WM	WATERMAIN	150 WM	)	PLUG	)	TRAFFIC SIGNAL		
400 FM	FEEDERMAIN	400 FM	o	MANHOLE	o	GAS		
300 LDS	LAND DRAINAGE SEWER	300 LDS	□	CATCHBASIN	□	HYDRO		
250 WWS	WASTEWATER SEWER	250 WWS	▽	CURB INLET	▽	MTS		
300 CS	COMBINED SEWER	300 CS	•	HYDRO POLE	•	ELEVATION	(32.000)	
200 FCM	FORCEMAIN	200 FCM	—+—	LIGHT STANDARD	—+—	SIDEWALK	—+—+—+—	
	JUNCTIONS		+	ANCHOR	+	CURB	—+—+—+—	
	HYDRANT		⊕	TREE	⊕	ASPHALT	—+—+—+—	
	VALVE		⊙	LEGAL DIMENSION	⊙	CONCRETE	—+—+—+—	
	CURB STOP		⊕	SURVEY BAR	⊕			
	LEGEND-PLAN			LEGEND-PLAN				

**WARDROP Engineering Inc.**

DESIGNED BY: DAL  
CHECKED BY: Lya  
DRAWN BY: NL  
APPROVED BY: [Signature]  
HOR. SCALE: 1 : 500  
VERTICAL: 1 : 20  
RELEASED FOR CONSTRUCTION

0 ISSUED FOR TENDER 07.08.08  
NO. REVISIONS DATE BY DATE

**PRELIMINARY DRAWING**

**NOT TO BE USED FOR CONSTRUCTION**

CONSULTANT DRAWING NO. 0600070700-DWG-C1007-00

**THE CITY OF WINNIPEG**  
PUBLIC WORKS DEPARTMENT  
ENGINEERING DIVISION

FORT GARRY BRIDGE REHABILITATION  
STAGE 2 DETOUR FOR 2008 OPERATIONS  
EASTBOUND THROUGH LANE  
FROM WAVERLEY STREET

CITY DRAWING NUMBER  
SHEET 7 OF 9  
C0007