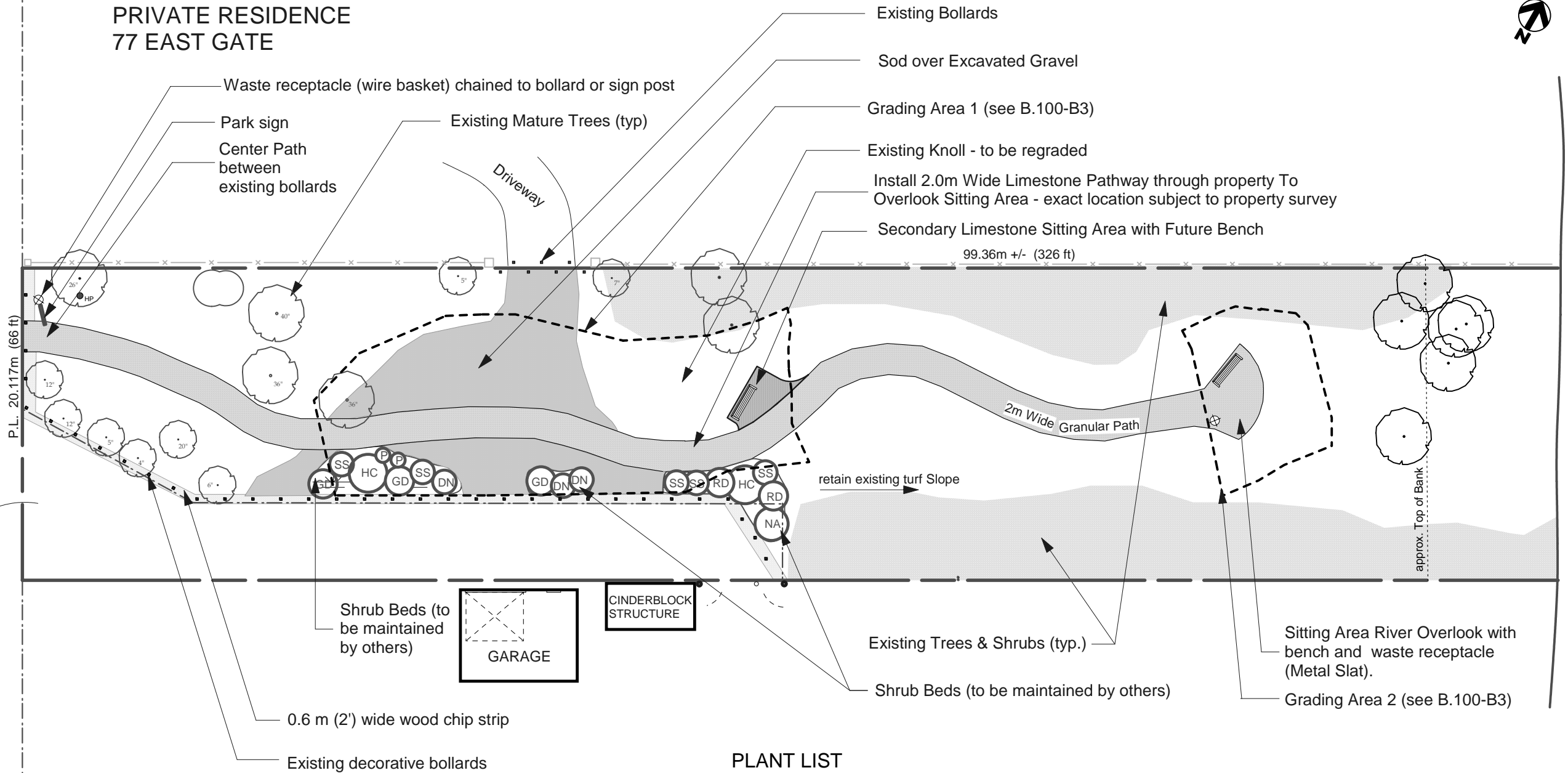


**PRIVATE RESIDENCE
77 EAST GATE**

**PRIVATE RESIDENCE
89 EAST GATE**



PLANT LIST

ID	Quant	Botanical Name	Project Plant Name	Type	Ht	Spr	Size	Spacing
P	2	Potentilla fruticosa 'Goldfinger'	Goldfinger Potentilla	shrub	0.9	1.2	2 gal	0.9m o.c.
DN	3	Physocarpus opulifolius 'Dart's Gold'	Dart's Gold Ninebark	shrub	1.2	1.2	2 gal	1.2m o.c.
SS	5	Spiraea x vanhouttei	Snowwhite Spirea	shrub	1.8	1.5	2 gal	1.2m o.c.
GD	3	Cornus alba 'Gouchaultii'	Golden Edge Dogwood	shrub	2.1	1.8	2 gal	1.5m o.c.
RD	2	Cornus sericea	Red Osier Dogwood	shrub	2.1	1.8	2 gal	1.5m o.c.
NA	1	Viburnum lentago	Nannyberry	shrub	3.7	2.1	2 gal	1.8m o.c.
HC	2	Viburnum trilobum	Highbush Cranberry	shrub	3.0	2.4	3 gal	2.4m o.c.

CONTRACTOR TO CONFIRM ALL DIMENSIONS AND REPORT ANY DISCREPANCIES TO CONTRACT ADMINISTRATOR PRIOR TO CONSTRUCTION. LOCATION OF UNDERGROUND STRUCTURES AS SHOWN ARE BASED ON THE BEST INFORMATION AVAILABLE BUT NO GUARANTEE IS GIVEN THAT ALL EXISTING UTILITIES ARE SHOWN OR THAT THE GIVEN LOCATIONS ARE EXACT. CONFIRMATION OF EXISTENCE AND EXACT LOCATION OF ALL SERVICES MUST BE OBTAINED FROM THE INDIVIDUAL UTILITIES BEFORE PROCEEDING WITH CONSTRUCTION.



THE CITY OF WINNIPEG
Planning, Property and Development Department
Planning and Land Use Division
Unit 15 - 30 Fort Street, Winnipeg, MB, (R3C 4X5)

DESIGNED BY	DB/ST	CHECKED BY	
DRAWN BY	DB/ST	APPROVED BY	
HORIZ. SCALE	1:300		
VERT. SCALE			
DATE	AUG/07		

MANAGER,
PARK AND OPEN SPACES

DATE

MANAGER,
PLANNING AND LAND USE DIVISION

DATE

DRAWING TITLE BLANCHARD EAST PARK	DRAWING NO. B.100-B2
Proposed Site Development	BID OPPORTUNITY NO. 561-2007
SITE ADDRESS	