

NO.	REVISION	DATE	BY
3	ISSUED FOR TENDER	Nov 2007	
2	ISSUED FOR FINAL REVIEW	6 July 2007	
1	ISSUED FOR REVIEW	7 May 2007	

THIS DRAWING IS THE EXCLUSIVE PROPERTY OF THE ARCHITECT AND CAN BE REPRODUCED ONLY WITH THE PERMISSION OF THE ARCHITECT IN WHICH CASE THE REPRODUCTION MUST BEAR THE NAME OF THE ARCHITECT.

THIS DRAWING SHALL NOT BE SCALED. FOLLOW GIVEN DIMENSIONS AND INFORMATION SHOWN ARE CORRECT.

THE CONTRACTOR SHALL SATISFY HIMSELF THAT ALL DIMENSIONS AND INFORMATION SHOWN ARE CORRECT.

PRIOR TO COMMENCEMENT OF WORK REPORT ANY DISCREPANCIES TO THE ARCHITECT.

VARIATIONS AND MODIFICATIONS TO WORK SHOWN WILL NOT BE ALLOWED WITHOUT WRITTEN PERMISSION OF THE ARCHITECT.

CONSULTANT



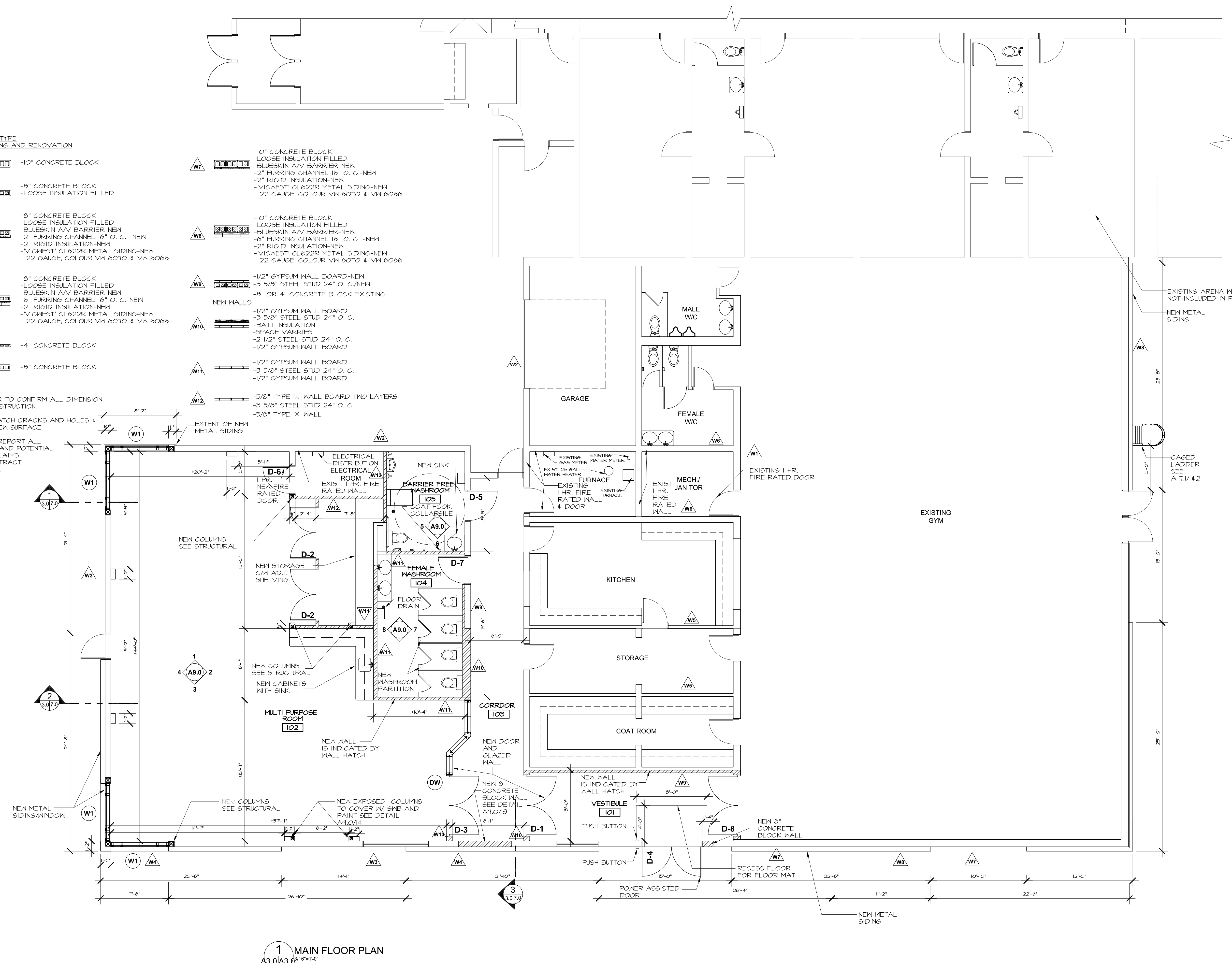
CALNITSKY ASSOCIATES ARCHITECTS

ARCHITECTURE | INTERIOR DESIGN
 124 Nassau Street North | Winnipeg, Manitoba R3L 2H1
 Tel: (204) 453-6441 | Fax: (204) 453-3392
 E-mail: caa@escape.ca

PROJECT TITLE
NOTRE DAME COMMUNITY CENTRE RENOVATION
 271 AVE. DE LA CATHEDRALE
 WINNIPEG, MANITOBA

SHEET TITLE
**FLOOR PLAN
 PHASE 1**

DRAWN BY	SCALE	SHEET NUMBER
MU	3/16" = 1'-0"	A-3.0
EC	15 Oct. 2007	
PROJECT NUMBER	REVISION	
06-012		



- WALL TYPE EXISTING AND RENOVATION**
- W1 [Symbol] -10" CONCRETE BLOCK
 - W2 [Symbol] -8" CONCRETE BLOCK -LOOSE INSULATION FILLED
 - W3 [Symbol] -8" CONCRETE BLOCK -LOOSE INSULATION FILLED -BLUESKIN A/V BARRIER-NEW -2" FURRING CHANNEL 16" O. C. -NEW -2" RIGID INSULATION-NEW -VICWEST CL622R METAL SIDING-NEW 22 GAUGE, COLOUR VM 6070 & VM 6066
 - W4 [Symbol] -8" CONCRETE BLOCK -LOOSE INSULATION FILLED -BLUESKIN A/V BARRIER-NEW -2" FURRING CHANNEL 16" O. C. -NEW -2" RIGID INSULATION-NEW -VICWEST CL622R METAL SIDING-NEW 22 GAUGE, COLOUR VM 6070 & VM 6066
 - W5 [Symbol] -4" CONCRETE BLOCK
 - W6 [Symbol] -8" CONCRETE BLOCK

- W7 [Symbol] -10" CONCRETE BLOCK -LOOSE INSULATION FILLED -BLUESKIN A/V BARRIER-NEW -2" FURRING CHANNEL 16" O. C. -NEW -2" RIGID INSULATION-NEW -VICWEST CL622R METAL SIDING-NEW 22 GAUGE, COLOUR VM 6070 & VM 6066
- W8 [Symbol] -10" CONCRETE BLOCK -LOOSE INSULATION FILLED -BLUESKIN A/V BARRIER-NEW -6" FURRING CHANNEL 16" O. C. -NEW -2" RIGID INSULATION-NEW -VICWEST CL622R METAL SIDING-NEW 22 GAUGE, COLOUR VM 6070 & VM 6066
- W9 [Symbol] -1/2" GYPSUM WALL BOARD-NEW -3 5/8" STEEL STUD 24" O. C. -NEW -8" OR 4" CONCRETE BLOCK EXISTING
- W10 [Symbol] -1/2" GYPSUM WALL BOARD -3 5/8" STEEL STUD 24" O. C. -BATT INSULATION -SPACE VARIES -2 1/2" STEEL STUD 24" O. C. -1/2" GYPSUM WALL BOARD
- W11 [Symbol] -1/2" GYPSUM WALL BOARD -3 5/8" STEEL STUD 24" O. C. -1/2" GYPSUM WALL BOARD
- W12 [Symbol] -5/8" TYPE 'X' WALL BOARD TWO LAYERS -3 5/8" STEEL STUD 24" O. C. -5/8" TYPE 'X' WALL

- NOTE:**
- CONTRACTOR TO CONFIRM ALL DIMENSION BEFORE CONSTRUCTION
 - FILL AND PATCH CRACKS AND HOLES & MATCH W/ NEW SURFACE
 - PROMPTLY REPORT ALL ACCIDENTS AND POTENTIAL LIABILITY CLAIMS TO THE CONTRACT ADMINISTRATOR.

1 MAIN FLOOR PLAN
 A3.0/A3.0 3/16"=1'-0"