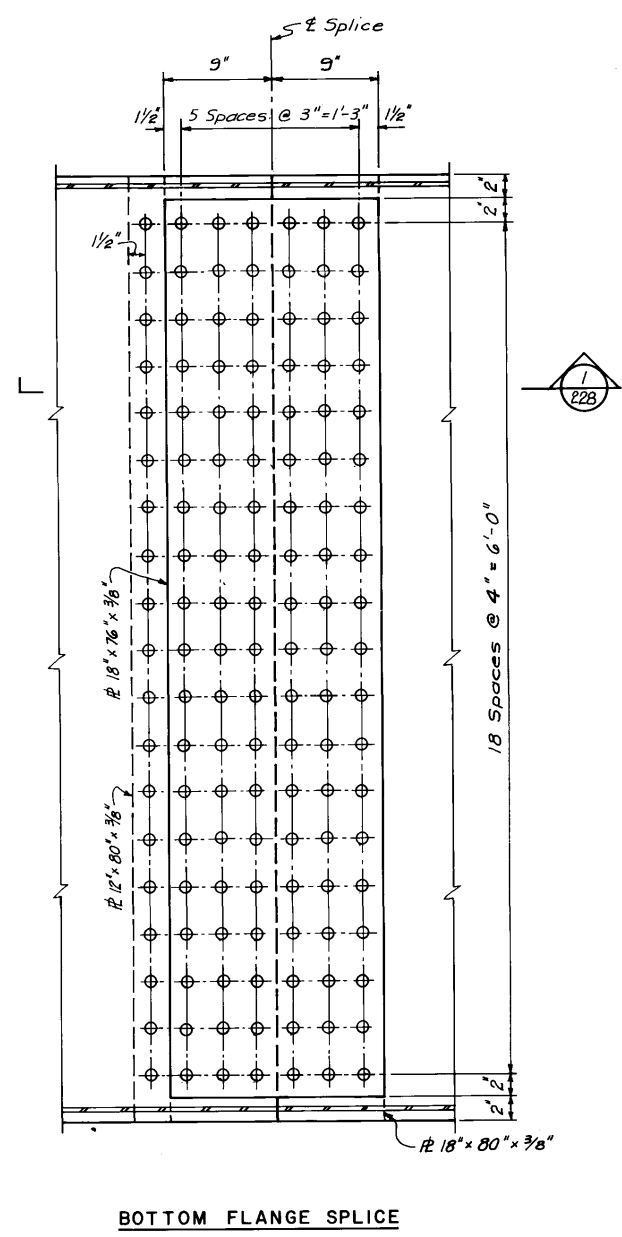
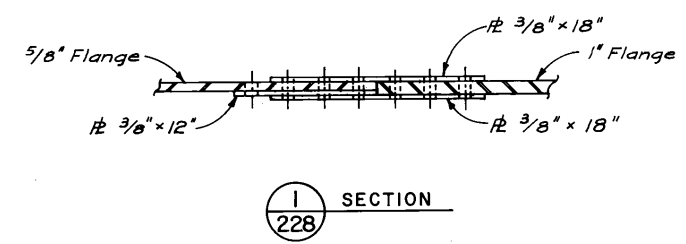


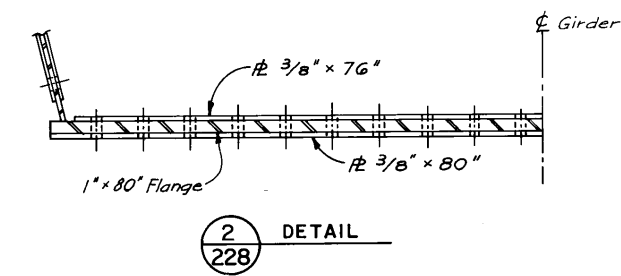
10 INCHES
9
8
7
6
5
4
3
2
1
0



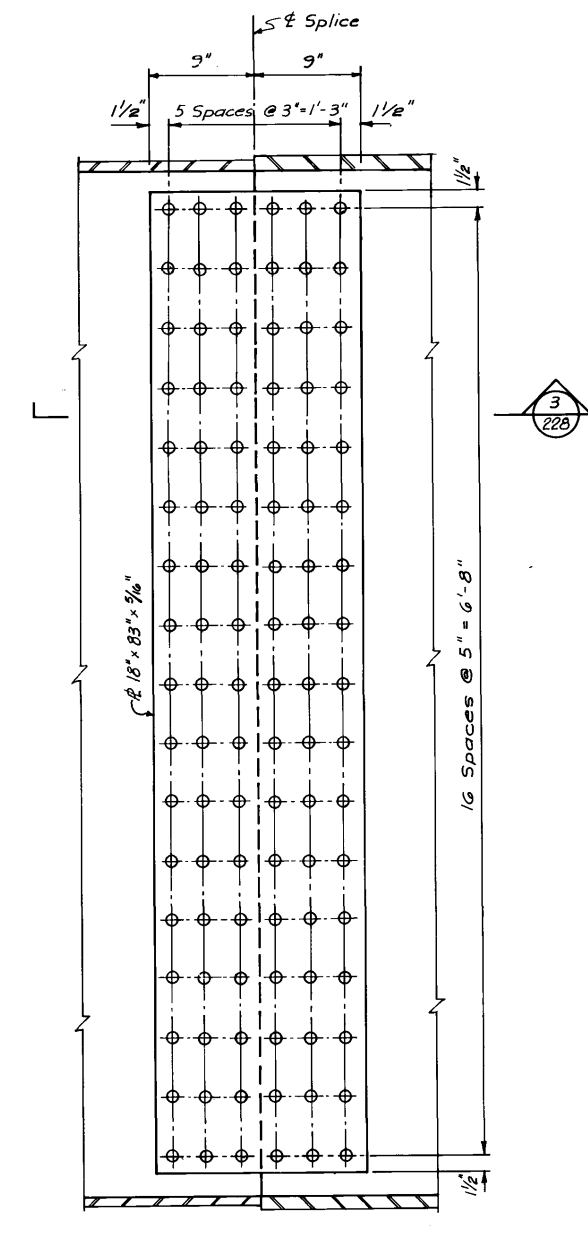
BOTTOM FLANGE SPLICE



1 SECTION
228



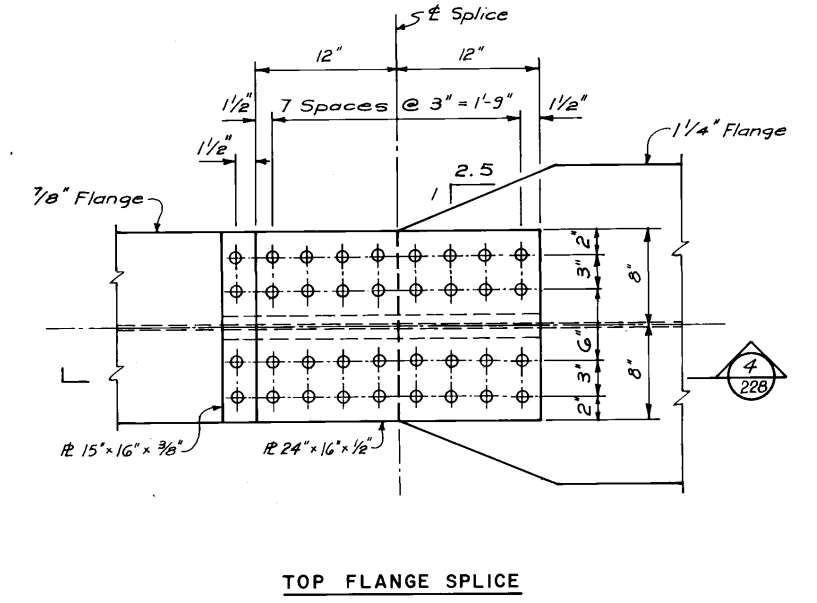
2 DETAIL
228



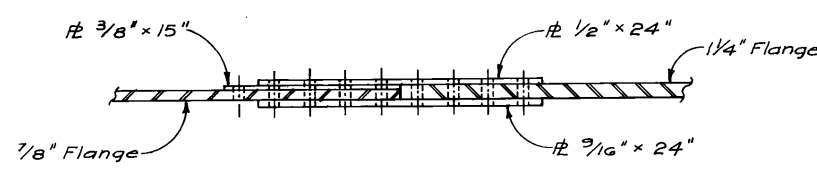
WEB SPLICE



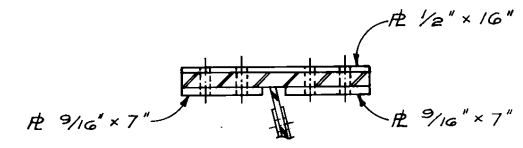
3 SECTION
228



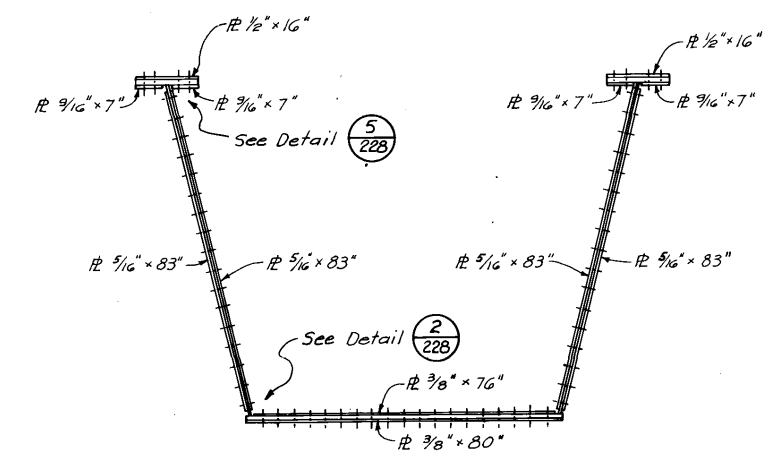
TOP FLANGE SPLICE



4 SECTION
228



5 DETAIL
228

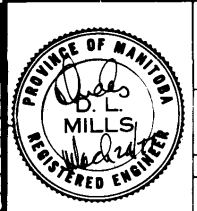


BOX GIRDER SECTION
Scale 1/2" = 1'-0"

- Notes:
1. All bolts shall be 7/8" ϕ ASTM A325 type 3 high strength bolts in 9/16" ϕ holes.
 2. Bolts shall be installed with the heads to the outside of web and to bottom of flanges.

AS - BUILT		
DATE	FB NO.	PAGE
Nov. 14/79		

NO.	ISSUED FOR TENDER	DATE	BY
		4.4.77	
	REVISIONS		



THE CITY OF WINNIPEG
WORKS & OPERATIONS DEPARTMENT
STREETS & TRANSPORTATION DIVISION

W.L. WARDROP & ASSOCIATES LTD.
ENGINEERING CONSULTANTS
WINNIPEG - THUNDER BAY - REGINA - BARRIE - EDMONTON

APPROVED BY: *[Signature]* DATE: 25.11.77

DRAWN BY: ST. JAN. 77
PRELIM. CHK.: STK. JAN. 77

DESIGN: STK. DEC. 76
CHECK: D.L.M. JAN. 77

ROUTE 165

FIELD SPLICES

APPROVED BY: *[Signature]* DATE: 2.5.82
MANAGER OF STREETS AND TRAFFIC

SCALE:
1/2" = 1'-0"

DRAWING NO.
B-5092-228