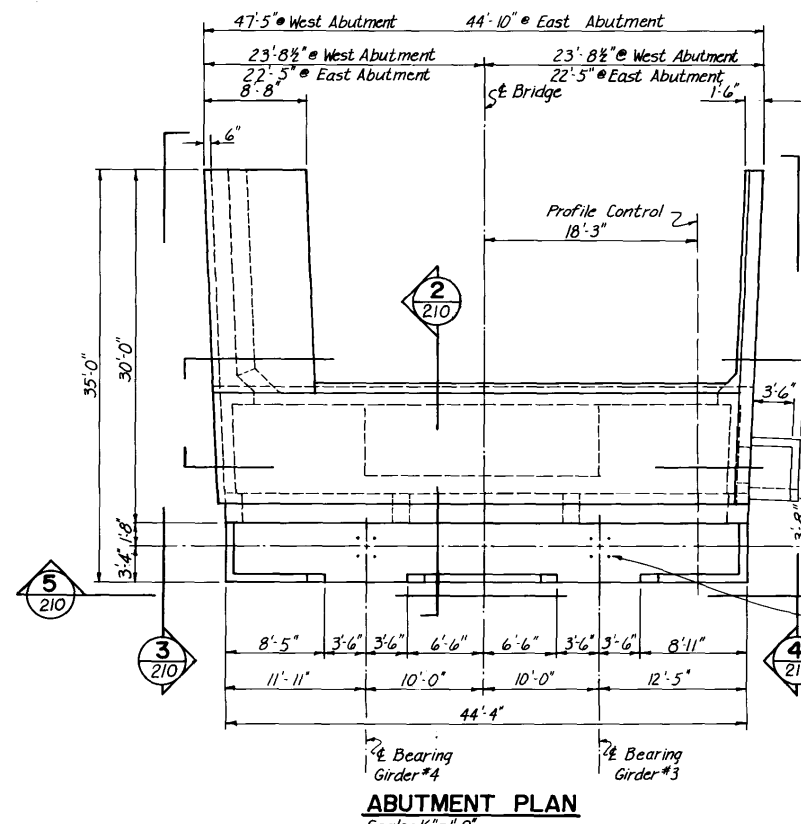
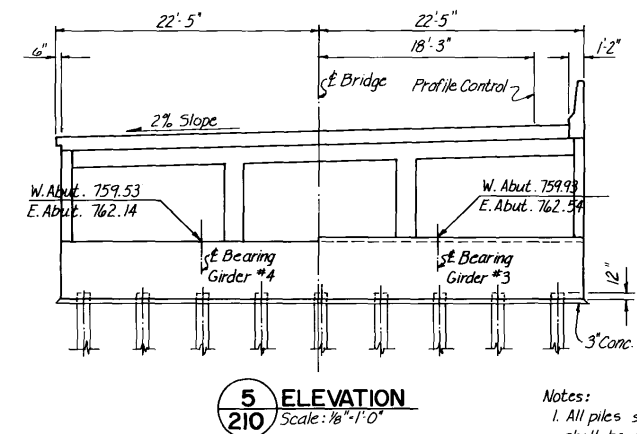
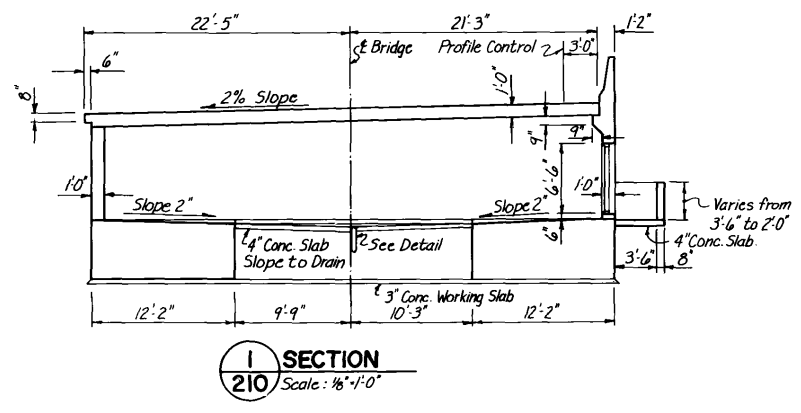


10 INCHES
9
18
17
6
4
3
12
11
10



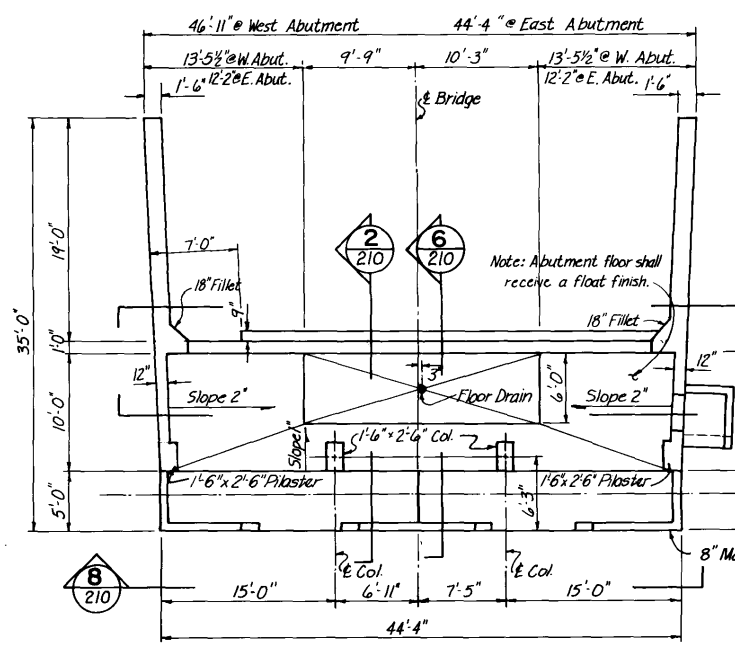
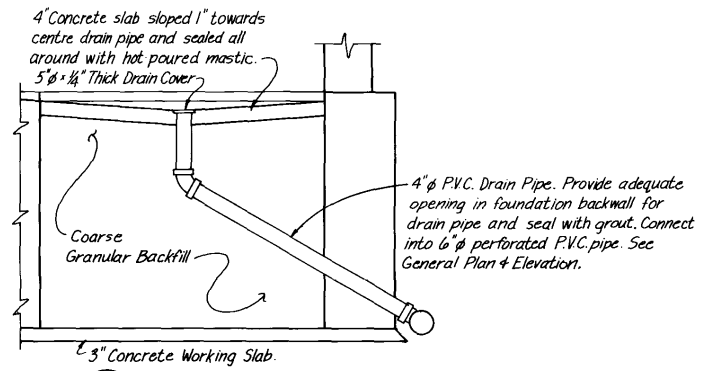
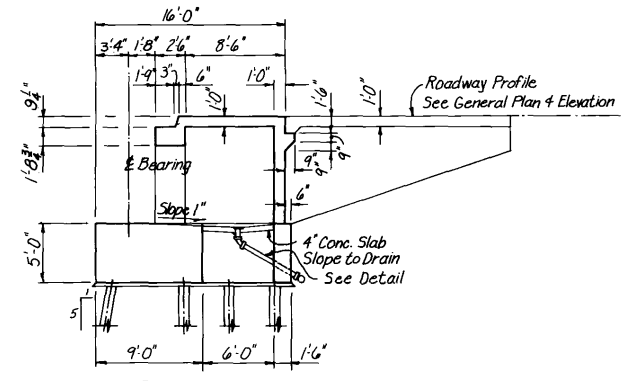
Note: All exposed vertical surfaces shall receive a ribbed finish and extend 6" below new ground line.

Location of 1 1/2" anchor bolts shall match 2" holes in Bottom Plate Assembly. See Bearing Details.



Note: Stepped section extended to backwall (West Abutment only)

- Notes:
- All piles shall be H-bearing piles HP12x74". All piles shall be placed vertical except where shown thus $\frac{1}{15}$, indicating direction and amount of batter.
 - Door assembly shall consist of the following items:
 - 3'-0" x 6'-6" x 1 3/4" Galvanized Steel Door.
 - 5 3/4" Galvanized Press-Steel Frame.
 - Weather stripping.
 - Aluminum Threshold.
 - 1 1/2" Pair FBB 191C15 Butts 4 1/2 x 4 (NRP)
 - Only 51PD x PLY/MET x 32D x TMS x 005 Lockset
 - Extreme accuracy and care shall be executed to maintain bearing seat levels at elevations shown. At bearing plate locations, surfaces shall be ground absolutely smooth and flat.
 - Elevations shown are taken at top of concrete.
 - See Drawing no 204, Note 2.
 - Geodetic Bench Mark brass pin located on the top of the South wingwall, West Abutment.



W. Abut. - 767.62 E. Abut. - 770.553

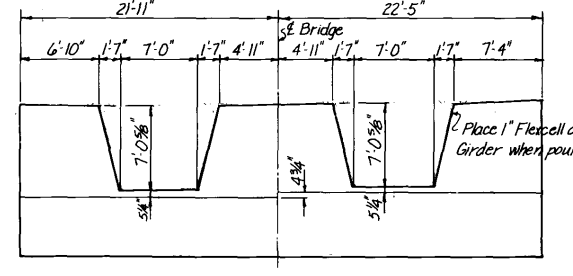
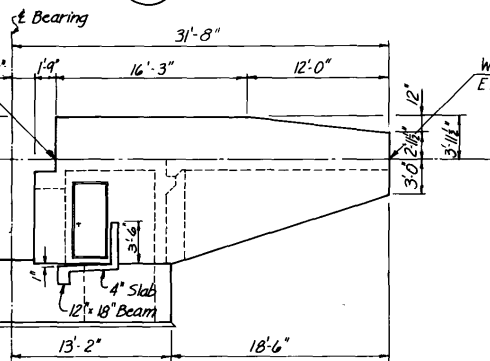
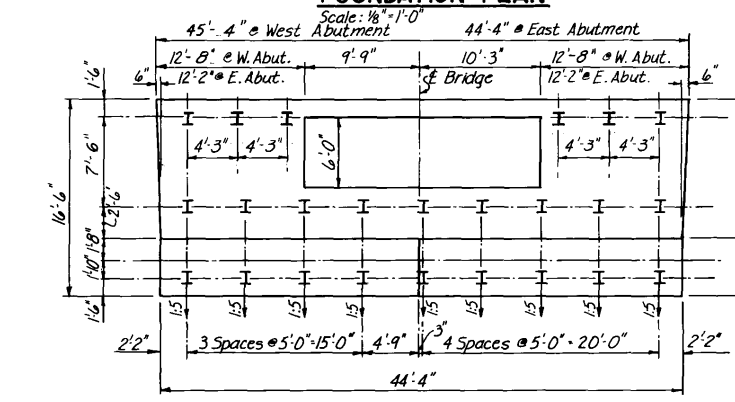
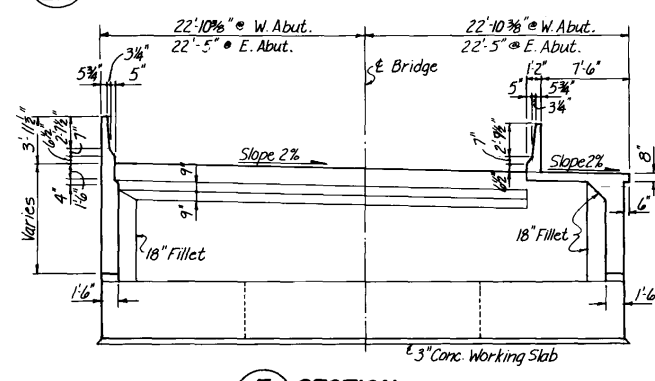
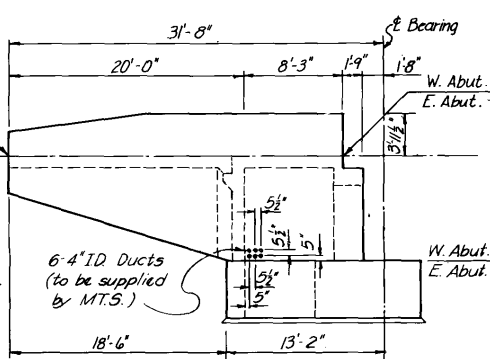
W. Abut. - 767.951 E. Abut. - 770.894

W. Abut. - 759.53 E. Abut. - 762.14

W. Abut. - 768.84 E. Abut. - 771.91

W. Abut. - 768.51 E. Abut. - 771.276

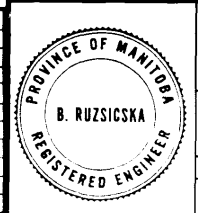
W. Abut. 759.93 E. Abut. 762.54



AS - BUILT		
DATE	FB NO.	PAGE
Nov. 14/79		



Adjusted Final elevations, as indicated	June 20/79	STK
ISSUED FOR TENDER	4-4-77	
REVISIONS	DATE	BY



THE CITY OF WINNIPEG
WORKS & OPERATIONS DEPARTMENT
STREETS & TRANSPORTATION DIVISION

W.L. WARDROP & ASSOCIATES LTD.
ENGINEERING CONSULTANTS
WINNIPEG - THUNDER BAY - REGINA - BARRIE - EDMONTON

APPROVED BY: *[Signature]* DATE 25 June 77

DRAWN BY J.K. DATE FEB. 77
PRELIM. CHK. DATE JAN. 77

ROUTE 165

ABUTMENT DETAILS SOUTH BRIDGE

SCALE:

APPROVED BY: *[Signature]* DATE 26/3/77
MANAGER OF STREETS AND TRAFFIC

DRAWING NO. B-5092-210