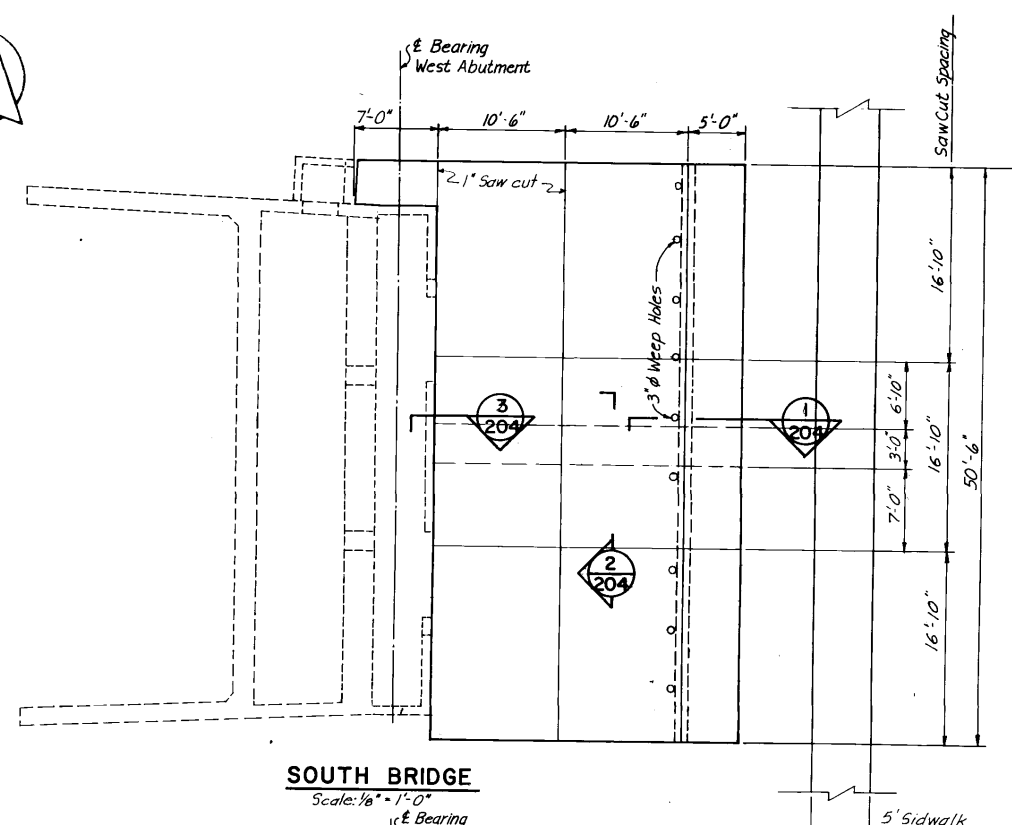
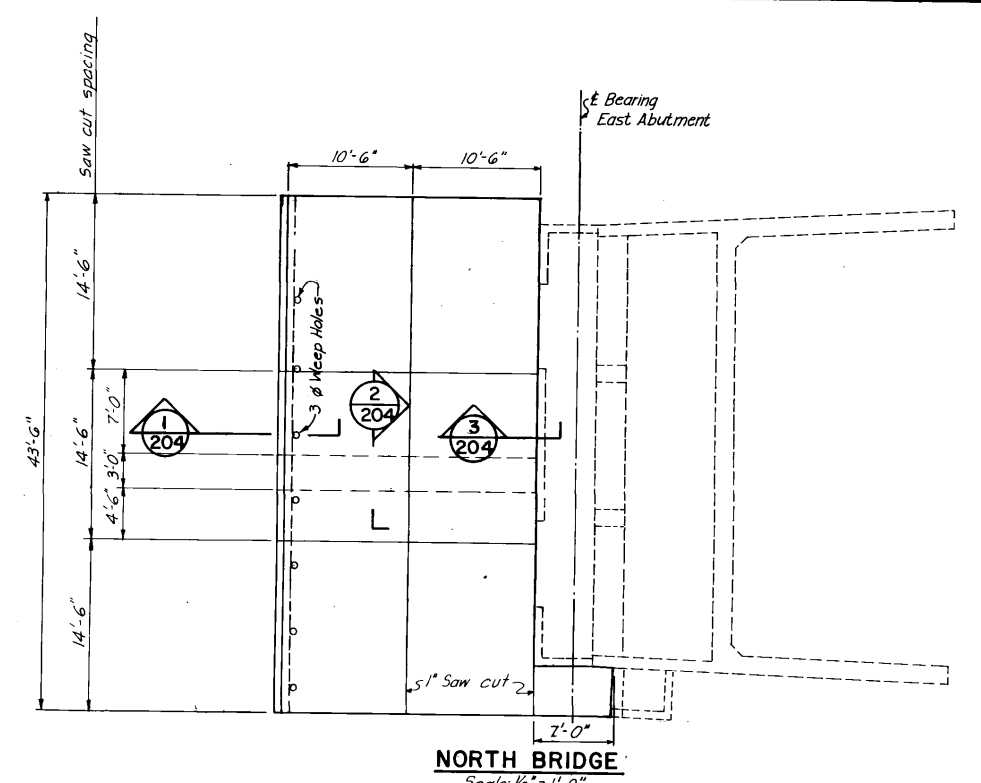




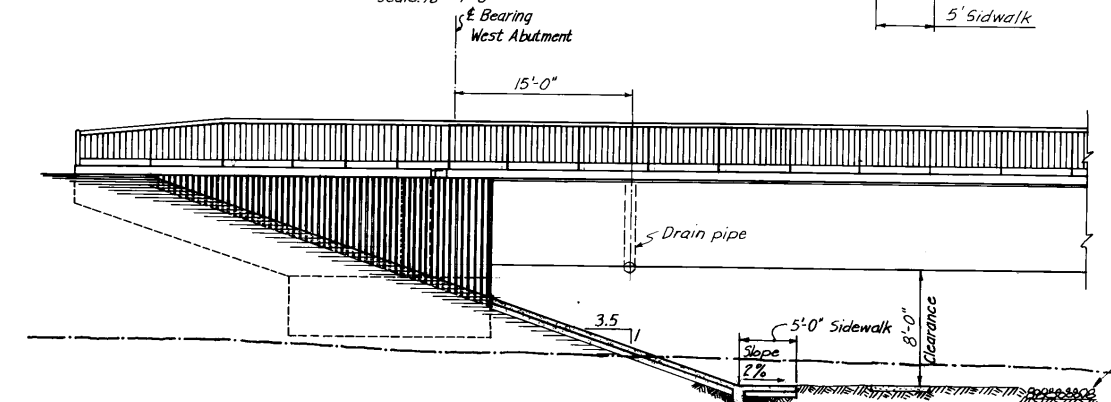
10 INCHES
19
18
17
16
15
14
13
12
11
10



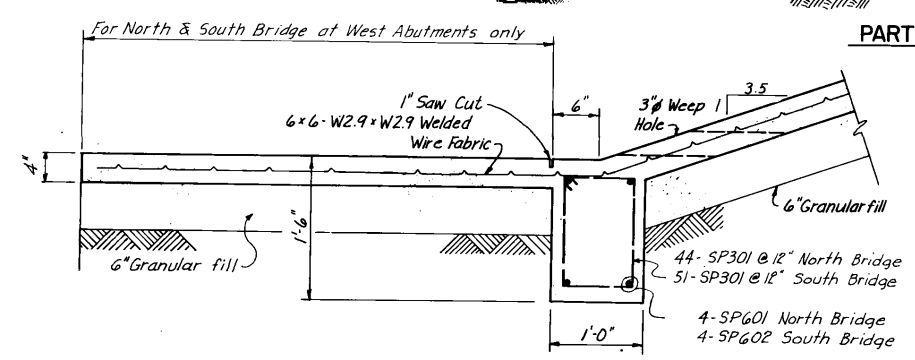
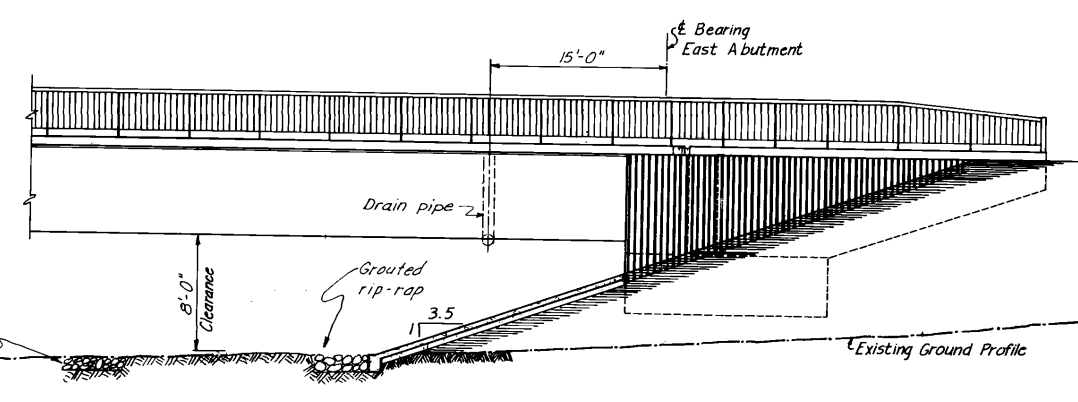
SOUTH BRIDGE
Scale: 1/8" = 1'-0"



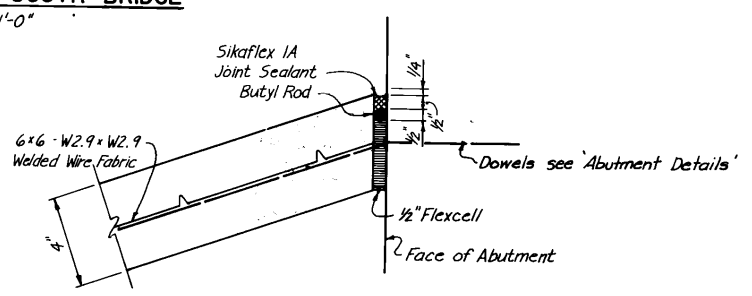
NORTH BRIDGE
Scale: 1/8" = 1'-0"



PARTIAL ELEVATION - SOUTH BRIDGE
Scale: 1/8" = 1'-0"

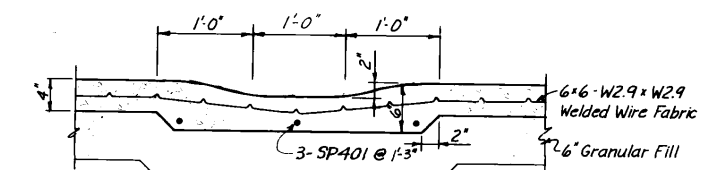


1 SECTION
Scale: 1" = 1'-0"



3 SECTION
Scale: 3" = 1'-0"

Notes:
1. The welded wire fabric shall be included as part of the concrete price for slope paving.



2 SECTION
Scale: 1" = 1'-0"

LOCATION APPROVED UNDERGROUND STRUCTURES
MARCH 23/77
D. Martyn
Supervisor

LOCATIONS OF UNDERGROUND STRUCTURES AS SHOWN ARE BASED ON THE BEST INFORMATION AVAILABLE, BUT NO GUARANTEE IS GIVEN THAT ALL EXISTING UTILITIES ARE SHOWN OR THAT THE GIVEN LOCATIONS ARE EXACT. CONFIRMATION OF EXISTENCE AND EXACT LOCATION OF ALL SERVICES MUST BE OBTAINED FROM THE INDIVIDUAL UTILITIES BEFORE PROCEEDING WITH CONSTRUCTION.

NO.	ISSUED FOR TENDER	DATE	BY
0		4-4-77	
1			
2			
3			
4			
5			
6			
7			
8			
9			

	THE CITY OF WINNIPEG WORKS & OPERATIONS DEPARTMENT STREETS & TRANSPORTATION DIVISION	ROUTE 165
	W.L. WARDROP & ASSOCIATES LTD. ENGINEERING CONSULTANTS WINNIPEG - THUNDER BAY - REGINA - SASKATOON	SLOPE PAVING DETAILS
APPROVED BY: <i>[Signature]</i> DATE: 25/3/77	DATE: JAN 77	SCALE: AS SHOWN
DRAWN BY: J.L.K. JAN 77 PRELIM. CHK: J.A.L. JAN 77	DESIGN: S.I.K. JAN 77 CHECK: J.A.L. JAN 77	DRAWING NO. B-5092-204
APPROVED BY: <i>[Signature]</i> DATE: 25/3/77 MANAGER OF STREETS AND TRAFFIC		DATE: 25/3/77

70-5117
Nov 14/73