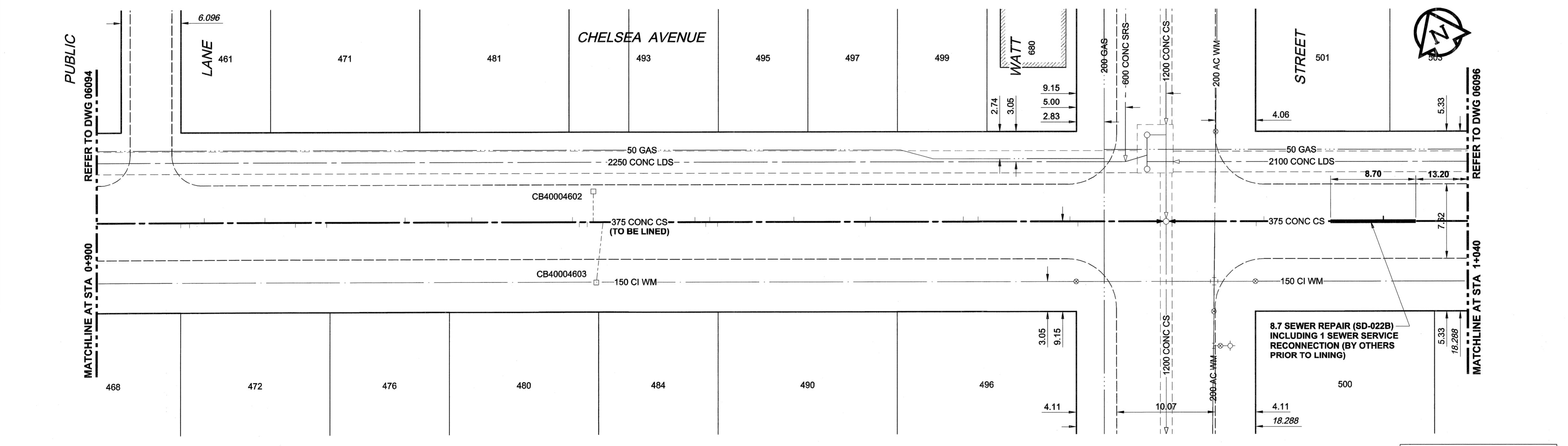
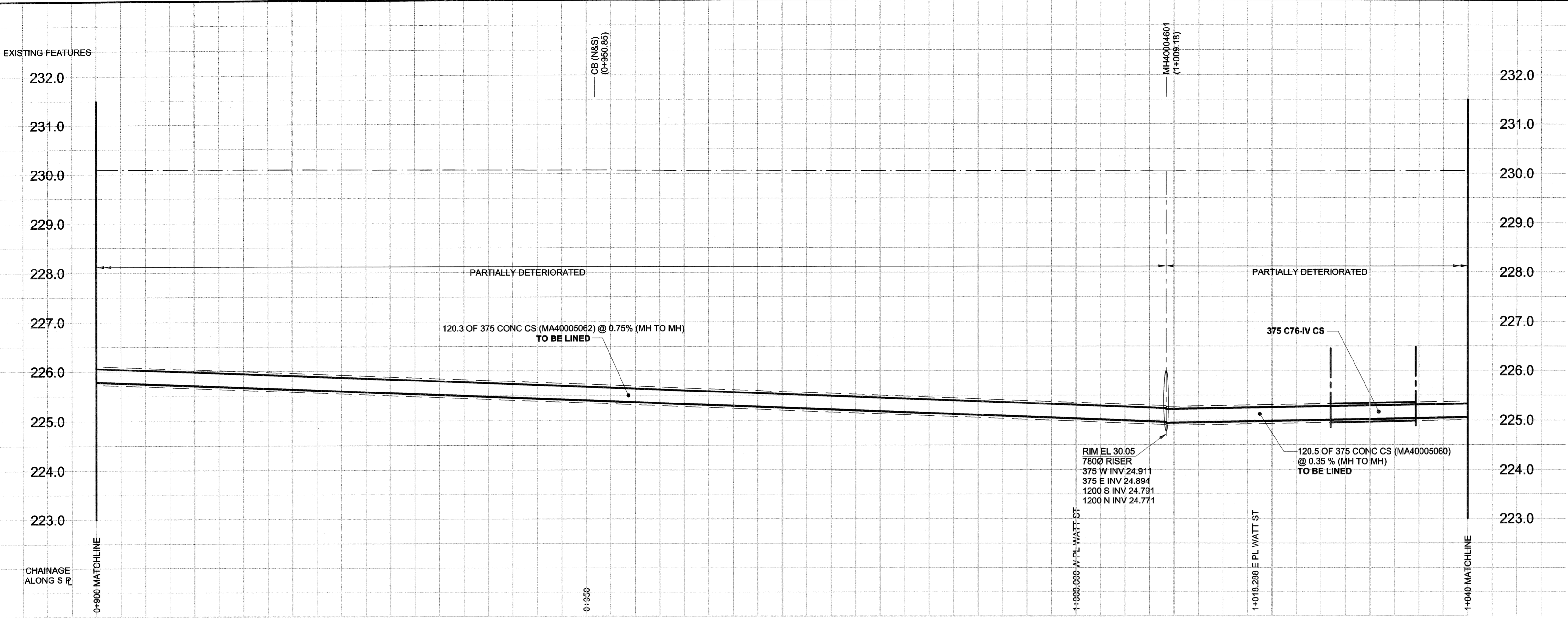


D SIZE 22" x 34" (559mm x 864mm)

PLOT: 07/07/20 4:43:55 PM

UMA/AECOM REVIEW DRAFT CHK



**SEWER JUNCTION INFORMATION**

REF. MH	DIST FROM REF. MH	SIZE	CLOCK AT*
MH40004637	4.30	150Ø	01
MH40004637	19.70	150Ø	01
MH40004637	20.60	150Ø	01
MH40004637	22.10	150Ø	11
MH40004637	28.30	150Ø	11
MH40004637	31.40	150Ø	01
MH40004637	34.60	150Ø	02
MH40004637	42.60	150Ø	11
MH40004637	47.00	150Ø	01
MH40004637	48.40	150Ø	11
MH40004637	59.70	150Ø	11
MH40004637	60.40	150Ø	01
MH40004637	61.20	150Ø	01
MH40004637	61.80	150Ø	11
MH40004637	62.80	150Ø	01
MH40004637	72.20	150Ø	11
MH40004637	73.30	150Ø	01
MH40004637	73.70	150Ø	11
MH40004637	74.50	150Ø	01
MH40004637	82.30	150Ø	11
MH40004637	88.60	150Ø	02
MH40004637	90.10	150Ø	11
MH40004637	99.60	150Ø	11
MH40004637	101.10	150Ø	11
MH40004637	110.50	150Ø	11
MH40004637	111.30	150Ø	01

\*JUNCTION INFORMATION FROM VIDEO INSPECTION

**WARNING**  
 IF POWER EQUIPMENT OR EXPLOSIVES ARE TO BE USED FOR EXCAVATION ON THIS PROJECT, THE CONTRACTOR MUST:  
 1) NOTIFY THE GAS COMPANY OF THE PROPOSED LOCATION OF EXCAVATION.  
 2) TAKE PRECAUTION TO AVOID DAMAGE TO GAS COMPANY INSTALLATIONS.  
 SEE PROVINCIAL REGULATION 140/92 FOR DETAILS

**METRIC**  
 WHOLE NUMBERS INDICATE MILLIMETRES  
 DECIMALIZED NUMBERS INDICATE METRES

EXISTING	LEGEND - PLAN	NEW	EXISTING	LEGEND - PROFILE	NEW
150 WM	WATERMAIN	150 WM	150 WM	WATERMAIN	150 WM
300 LDS	LAND DRAINAGE SEWER	300 LDS	300 LDS	LAND DRAINAGE SEWER	300 LDS
250 WWS	WASTE WATER SEWER	250 WWS	250 WWS	WASTE WATER SEWER	250 WWS
○	MANHOLE	●	○	MANHOLE	●
□	CATCH BASIN	■	□	CATCH BASIN	■
△	CURB INLET	▲	△	CURB INLET	▲
▭	CULVERT	▭	▭	CULVERT	▭
—	PIPE ABANDONMENTS	—	—	PIPE ABANDONMENTS	—
+	SURVEY BAR	+	+	SURVEY BAR	+
○	HYDRANT	○	○	HYDRANT	○
+	VALVE	+	+	VALVE	+
○	ANODE	○	○	ANODE	○
○	TESTHOLE	○	○	TESTHOLE	○
○	GAS	○	○	GAS	○
○	MTS	○	○	MTS	○
○	COUPLING	○	○	COUPLING	○
○	REDUCER	○	○	REDUCER	○
○	CURB STOP	○	○	CURB STOP	○
○	TREE	○	○	TREE	○

**LOCATION APPROVED**  
 UNDERGROUND STRUCTURES  
 SUPR. U/G STRUCTURES DATE COMMITTEE  
 NOTE: LOCATION OF UNDERGROUND STRUCTURES AS SHOWN ARE BASED ON THE BEST INFORMATION AVAILABLE. BUT NO GUARANTEE IS GIVEN THAT ALL EXISTING UTILITIES ARE SHOWN OR THAT THE GIVEN LOCATIONS ARE EXACT. CONFIRMATION OF EXISTENCE AND EXACT LOCATION OF ALL SERVICES MUST BE OBTAINED FROM THE INDIVIDUAL UTILITIES BEFORE PROCEEDING WITH CONSTRUCTION.

BM 12-062	N.E. Cor. Watt St. & Kimberley Ave., Tdbt. on top of 0.05m dia. x 2.4m iron pipe, 0.3m W. of E.L. of Watt St. & on N.L. of Kimberley Ave.	ELEV 230.128m
NO.	REVISIONS	YYMMDD BY

DESIGNED BY	MJR	CHECKED BY	A. Deland
DRAWN BY	KMB	APPROVED BY	[Signature]
HOR. SCALE	1:250	RELEASED FOR CONSTRUCTION	[Signature]
VERT. SCALE	1:50	DATE	07/07/21

**UMA | AECOM**  
 Certificate of Authorization  
 UMA Engineering Ltd. (MB)  
 No. 256 Date: 07/07/21

**THE CITY OF WINNIPEG**  
 WATER AND WASTE DEPARTMENT

**2007 COMBINED SEWER RENEWALS**  
 BY CIPP LINING  
 CONTRACT 20  
 CHELSEA AVENUE

STA 0+900 TO STA 1+040

SHEET 3 OF 11  
 CITY DRAWING NUMBER 06095  
 REV 0

BID OPPORTUNITY NO. 545-2007