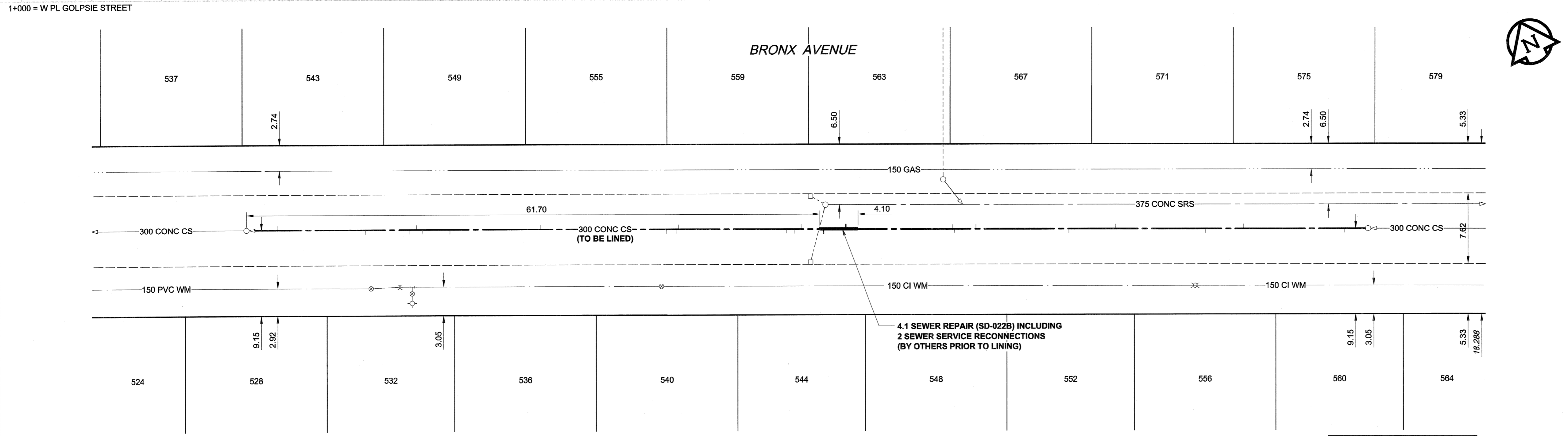
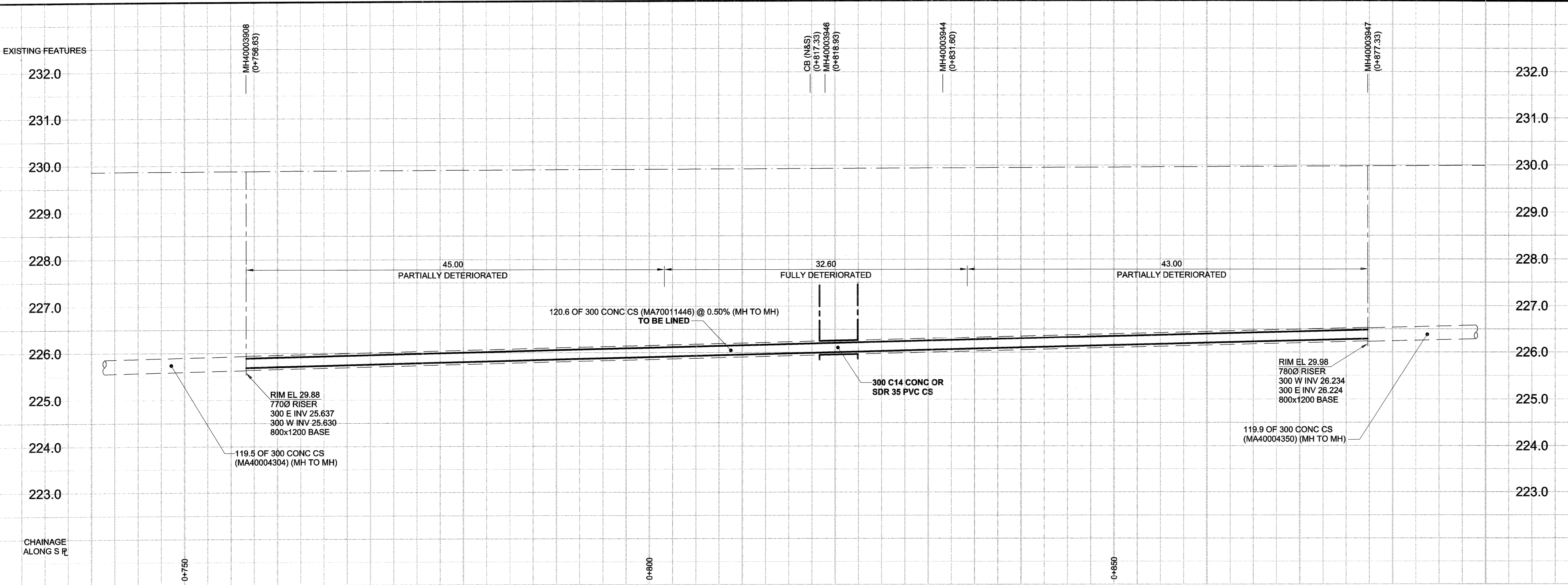


D SIZE 22" x 34" (559mm x 864mm)

PLOT: 07/07/20 4:44:04 PM

UMA AECOM REVIEW DRFT CHK AAL
UMA FILE NAME: D285-217-01_00-C-1001_RX.dwg Saved By: kberard



SEWER JUNCTION INFORMATION

REF. MH*	DIST FROM*	SIZE*	CLOCK AT*
MH40003947	2.50	1000	10
MH40003947	13.40	1000	02
MH40003947	17.50	1500	10
MH40003947	27.20	1000	02
MH40003947	32.20	1000	10
MH40003947	42.20	1000	02
MH40003947	44.50	1000	10
MH40003947	44.70	1000	01
MH40003908	3.30	1000	11
MH40003908	12.80	1000	01
MH40003908	17.50	1000	01
MH40003908	18.30	1000	11
MH40003908	18.90	1000	02
MH40003908	21.90	1000	01
MH40003908	31.60	1000	11
MH40003908	45.20	1000	01
MH40003908	46.30	1000	02
MH40003908	46.50	1000	11
MH40003908	58.10	1500	02
MH40003908	58.00	1000	01
MH40003908	58.70	1000	11
MH40003908	62.10	1000	02
MH40003908	64.50	1000	10

*JUNCTION INFORMATION FROM VIDEO INSPECTION

WARNING
 IF POWER EQUIPMENT OR EXPLOSIVES ARE TO BE USED FOR EXCAVATION ON THIS PROJECT, THE CONTRACTOR MUST:
 1) NOTIFY THE GAS COMPANY OF THE PROPOSED LOCATION OF EXCAVATION.
 2) TAKE PRECAUTION TO AVOID DAMAGE TO GAS COMPANY INSTALLATIONS.
 SEE PROVINCIAL REGULATION 140/92 FOR DETAILS

METRIC
 WHOLE NUMBERS INDICATE MILLIMETRES
 DECIMALIZED NUMBERS INDICATE METRES

EXISTING	LEGEND - PLAN	NEW	EXISTING	LEGEND - PLAN	NEW	EXISTING	LEGEND - PROFILE	NEW
150 WM	WATERMAIN	150 WM	150 WM	WATERMAIN	150 WM	150 WM	WATERMAIN	150 WM
300 LDS	LAND DRAINAGE SEWER	300 LDS	300 LDS	LAND DRAINAGE SEWER	300 LDS	300 LDS	LAND DRAINAGE SEWER	300 LDS
250 WWS	WASTE WATER SEWER	250 WWS	250 WWS	WASTE WATER SEWER	250 WWS	250 WWS	WASTE WATER SEWER	250 WWS
MANHOLE	MANHOLE	MANHOLE	MANHOLE	MANHOLE	MANHOLE	MANHOLE	MANHOLE	MANHOLE
CATCH BASIN	CATCH BASIN	CATCH BASIN	CATCH BASIN	CATCH BASIN	CATCH BASIN	CATCH BASIN	CATCH BASIN	CATCH BASIN
CURB INLET	CURB INLET	CURB INLET	CURB INLET	CURB INLET	CURB INLET	CURB INLET	CURB INLET	CURB INLET
CULVERT	CULVERT	CULVERT	CULVERT	CULVERT	CULVERT	CULVERT	CULVERT	CULVERT
PIPE ABANDONMENTS	PIPE ABANDONMENTS	PIPE ABANDONMENTS	PIPE ABANDONMENTS	PIPE ABANDONMENTS	PIPE ABANDONMENTS	PIPE ABANDONMENTS	PIPE ABANDONMENTS	PIPE ABANDONMENTS
SURVEY BAR	SURVEY BAR	SURVEY BAR	SURVEY BAR	SURVEY BAR	SURVEY BAR	SURVEY BAR	SURVEY BAR	SURVEY BAR
HYDRANT	HYDRANT	HYDRANT	HYDRANT	HYDRANT	HYDRANT	HYDRANT	HYDRANT	HYDRANT
VALVE	VALVE	VALVE	VALVE	VALVE	VALVE	VALVE	VALVE	VALVE
ANODE	ANODE	ANODE	ANODE	ANODE	ANODE	ANODE	ANODE	ANODE
HYDRO	HYDRO	HYDRO	HYDRO	HYDRO	HYDRO	HYDRO	HYDRO	HYDRO
MTS	MTS	MTS	MTS	MTS	MTS	MTS	MTS	MTS
GAS	GAS	GAS	GAS	GAS	GAS	GAS	GAS	GAS
TESTHOLE	TESTHOLE	TESTHOLE	TESTHOLE	TESTHOLE	TESTHOLE	TESTHOLE	TESTHOLE	TESTHOLE
LAMP STANDARD	LAMP STANDARD	LAMP STANDARD	LAMP STANDARD	LAMP STANDARD	LAMP STANDARD	LAMP STANDARD	LAMP STANDARD	LAMP STANDARD
TREE	TREE	TREE	TREE	TREE	TREE	TREE	TREE	TREE

LOCATION APPROVED
 UNDERGROUND STRUCTURES
 SUPR. U/G STRUCTURES DATE COMMITTEE
 NOTE:
 LOCATION OF UNDERGROUND STRUCTURES AS SHOWN ARE BASED ON THE BEST INFORMATION AVAILABLE. BUT NO GUARANTEE IS GIVEN THAT ALL EXISTING UTILITIES ARE SHOWN OR THAT THE GIVEN LOCATIONS ARE EXACT. CONFIRMATION OF EXISTENCE AND EXACT LOCATION OF ALL SERVICES MUST BE OBTAINED FROM THE INDIVIDUAL UTILITIES BEFORE PROCEEDING WITH CONSTRUCTION.

NO.	ISSUED FOR CONSTRUCTION	DATE	BY
0	ISSUED FOR CONSTRUCTION	07/07/20	KMB
	REVISIONS	YYMMDD	BY

DESIGNED BY	CHECKED BY
MJR	A. Delamini
DRAWN BY	APPROVED BY
KMB	[Signature]
HOR. SCALE	VERT. SCALE
1:250	1:50
DATE	DATE
07/07/21	07/07/21

UMA AECOM
 Certificate of Authorization
 UMA Engineering Ltd. (MB)
 No. 256 Date: 07/07/21

THE CITY OF WINNIPEG
 WATER AND WASTE DEPARTMENT
 2007 COMBINED SEWER RENEWALS
 BY CIPP LINING
 CONTRACT 20
 BRONX AVENUE
 2ND MH W OF GOLSPIE STREET
 TO 1ST MH W OF GOLSPIE STREET

PROFESSIONAL'S SEAL
 PROVINCE OF MANITOBA
 21 July 2007
 C. C. MACEY
 REGISTERED ENGINEER
 CONSULTANT DRAWING NO. 01
 D285-217-01

SHEET 1 OF 11
 CITY DRAWING NUMBER
 06093
 REV 0

BID OPPORTUNITY NO. 545-2007