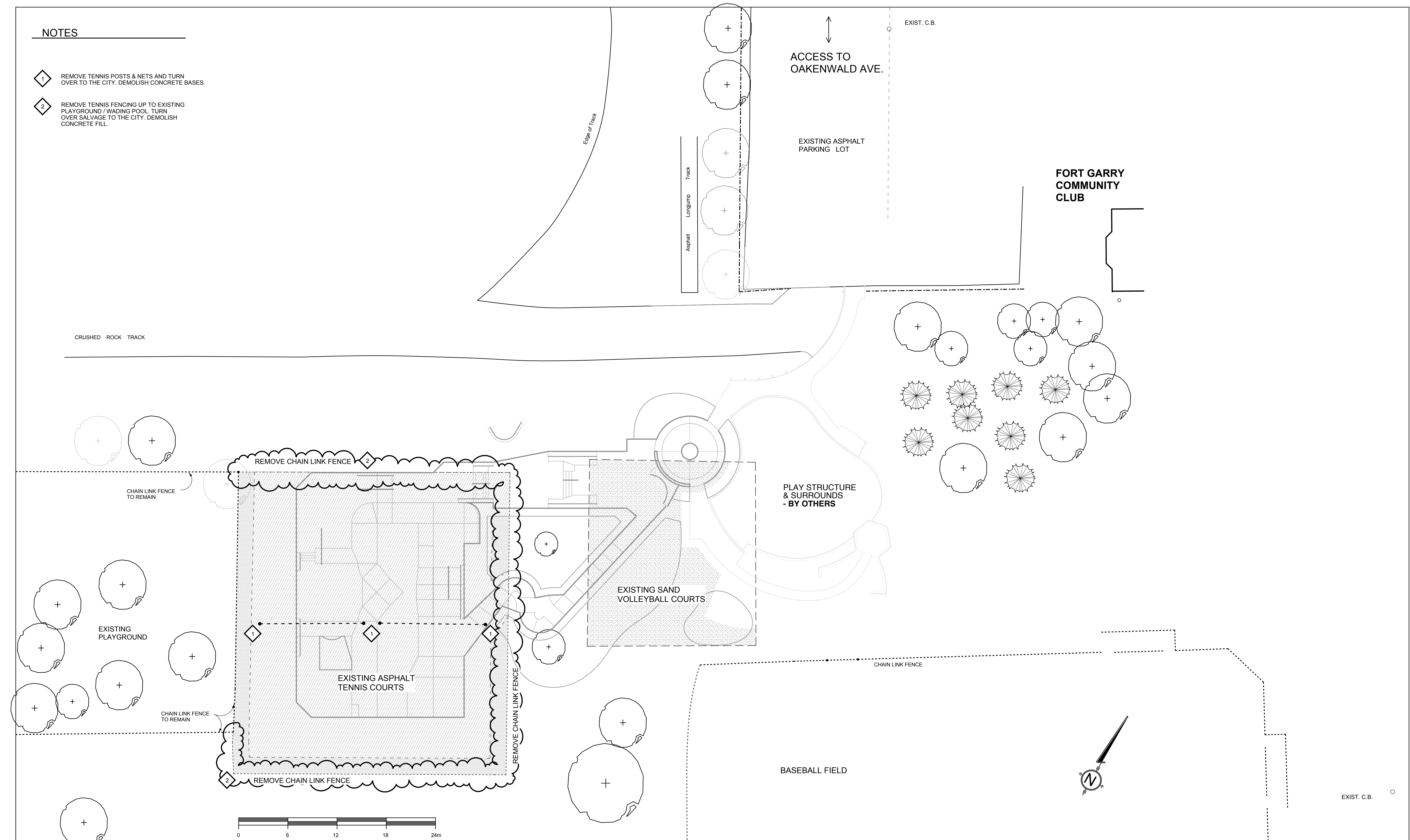


NOTES

- 1 REMOVE TENNIS POSTS & NETS AND TURN OVER TO THE CITY. DEMOLISH CONCRETE BASES.
- 2 REMOVE TENNIS FENCING UP TO EXISTING PLAYGROUND / WADING POOL. TURN OVER SALVAGE TO THE CITY. DEMOLISH CONCRETE FILL.



LEGEND

- REMOVE EXISTING ASPHALT SURFACE.
- SALVAGE EXISTING SAND FOR SITE WORK
- REMOVE EXISTING ASPHALT SURFACE. SALVAGE GRANULAR BASE AND REPLACE WITH COMMON FILL OR SCARIFY PRIOR TO PLACING TOPSOIL.

HILDERMAN THOMAS FRANK CRAM
 Landscape Architecture • Planning
 500 - 115 Bannatyne Avenue East, Winnipeg, MB R3B 0R3
 Phone: 204.944.9907 Fax: 204.957.1467

SPECTRUM SKATEPARK CREATIONS LTD.

B.M. ELEV.	YY.MM.DD		
DESIGNED: AB	DRAWN: AB		
SCALE: 1:200	APPROVED: GM		
ACCEPTED BY:			
DATE: JULY 6, 2007			
NO.	REVISIONS	DATE	BY

Manitoba Association of Landscape Architects
 City of Winnipeg
 License No. 81

THE CITY OF WINNIPEG
 PUBLIC WORKS DEPARTMENT
 ENGINEERING DIVISION

FORT GARRY COMMUNITY CENTRE SKATEBOARD PARK

DEMOLITION PLAN

CITY DRAWING NUMBER
 SHEET 1 OF 5

L-1

CONSULTANT PROJECT NO
 07 014

07-014 site plan skateboard