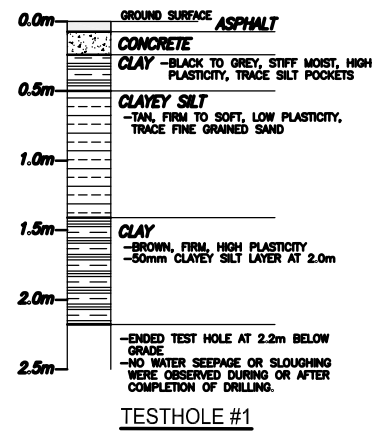
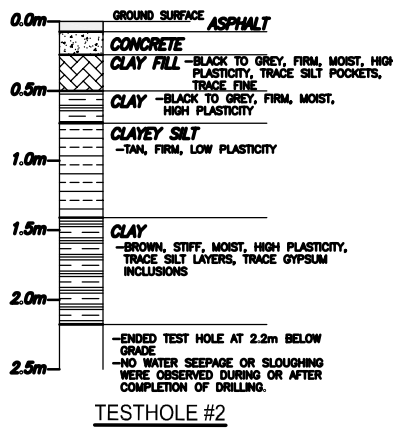


TYPICAL CROSS-SECTION
SCALE: NTS



TESTHOLE #1



TESTHOLE #2

- NOTES:
1. ALL WORK AND MATERIALS TO BE IN ACCORDANCE WITH THE LATEST REVISION OF THE CITY OF WINNIPEG STANDARD CONSTRUCTION SPECIFICATIONS.
 2. ALL ROADWAY DIMENSIONS SHOWN ARE TO BACK OF CURB.
 3. ALL BOULEVARDS TO BE SODDED UNLESS OTHERWISE NOTED.
 4. ADD 200.00 TO ALL ELEVATIONS TO OBTAIN GEODETIC ELEVATION.
 5. CURB 180mm HEIGHT.

APEGN
Certificate of Authorization
ND LEA Inc.
No. 2728 Expiry: April 30, 2007

METRIC
WHOLE NUMBERS INDICATE MILLIMETRES
DECIMALIZED NUMBERS INDICATE METRES

EXISTING	LEGEND-PLAN	PROPOSED	EXISTING	LEGEND-PLAN	PROPOSED	EXISTING	LEGEND-PROFILE	PROPOSED
---	PROPERTY LINE	---	---	CURB INLET	---	---	---	---
---	EDGE OF PAVEMENT	---	---	STREET LIGHT	---	---	---	---
---	ELEVATION	---	---	FENCE	---	---	---	---
---	150 PVC SUB-DRAIN	---	---	SHRUB	---	---	---	---
---	WATERMAIN	---	---	RENEW SIDEWALK	---	---	---	---
---	LAND DRAINAGE SEWER	---	---	150 REINFORCED CONC. CURB RAMP	---	---	---	---
---	MANHOLE	---	---		---	---	---	---
---	CATCH BASIN	---	---		---	---	---	---
---	UTILITIES ADJUSTED	---	---		---	---	---	---

LOCATIONS APPROVED
UNDERGROUND STRUCTURES

SIGNED BY: _____ DATE: _____
SURV U/G STRUCTURES

LOCATION OF UNDERGROUND STRUCTURES AS SHOWN ARE BASED ON THE BEST INFORMATION AVAILABLE BUT NO GUARANTEE IS GIVEN THAT ALL EXISTING UTILITIES ARE SHOWN OR THAT THE GIVEN LOCATIONS ARE EXACT CONFIRMATION OF EXISTENCE AND EXACT LOCATION OF ALL SERVICES MUST BE OBTAINED FROM THE INDIVIDUAL UTILITIES BEFORE PROCEEDING

G.B.M. 25-024 88R533 N.W. Cor. Church Ave. & Arlington St., Box 111.6 m Concrete, 2.3 m E. of W.L. of Arlington St. & 0.3 m N. of N.L. of Church Ave.

NDLEA Inc.
Suite 111-93 Lombard Avenue Winnipeg, Manitoba R3B 3B1
Phone (204) 943-3178 Facsimile (204) 943-4948

DESIGNED BY	RMB	CHECKED BY	RMB/Dd
DRAWN BY	PD	APPROVED BY	RMB
HOR. SCALE	1:250	RELEASED FOR CONSTRUCTION	
VERTICAL	1:25	DATE	

CONSULTANT ACAD DWG. NO. 41761-C01

ENGINEER'S SEAL

R.M. BORODY
REGISTERED PROFESSIONAL ENGINEER

CITY OF WINNIPEG
PUBLIC WORKS DEPARTMENT
ENGINEERING SERVICES DIVISION

2007 RESIDENTIAL STREET RENEWAL PROGRAM
PAVEMENT RECONSTRUCTION
GALLOWAY STREET
MOUNTAIN AVENUE TO STA. 2+60

CITY DRAWING NUMBER
SHEET 1 OF 2