

SEWER JUNCTION INFORMATION FROM SEWER VIDEO INSPECTION SEWER ID S-MA20005688

DISTANCE FROM MH ID S-MH20005206			
23.8	E	150#	NORTH JN
33.2	E	150#	SOUTH CN
34.6	E	150#	NORTH CN
37.5	E	150#	SOUTH JN
41.9	E	150#	NORTH JN
51.8	E	150#	SOUTH CN
53.4	E	150#	NORTH CNI

SEWER JUNCTION INFORMATION FROM SEWER VIDEO INSPECTION SEWER ID S-MA20004886

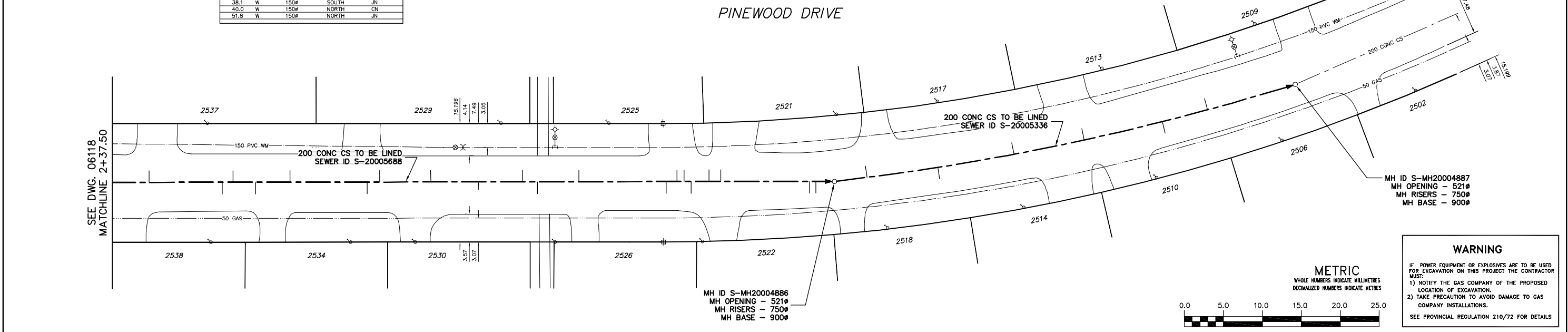
DISTANCE FROM MH ID S-MH20004886			
2.4	W	150#	SOUTH JN
3.2	W	150#	SOUTH CNI
14.6	W	150#	NORTH JN
16.1	W	150#	NORTH CNI
18.4	W	150#	SOUTH JN
19.3	W	150#	NORTH CNI
20.2	W	150#	NORTH JN
21.6	W	150#	SOUTH CN
32.8	W	150#	NORTH JN
38.1	W	150#	SOUTH JN
40.0	W	150#	NORTH CN
51.8	W	150#	NORTH JN

SEWER JUNCTION INFORMATION FROM SEWER VIDEO INSPECTION SEWER ID S-MA20005336

DISTANCE FROM MH ID S-MH20004886			
4.2	E	150#	NORTH CN
13.4	E	150#	SOUTH CN
23.3	E	150#	NORTH CN
32.5	E	150#	SOUTH CN
42.8	E	150#	NORTH CN
48.8	E	150#	SOUTH CN

NOTE: CHAINAGES SHOWN ARE ALONG N. P. OF PINEWOOD DR.

FOR SERVICE INFORMATION SEE DRAWING 06118



200 WM	WATERMAIN	200 WM	SL, HYDRO	150 WM	WATERMAIN	150 WM
⊕	HYDRANT	⊕	MTS	+	HYDRANT	+
⊙	VALVE	⊙	TRAFFIC SIGNALS	⊗	VALVE	⊗
525 LDS	LAND DRAINAGE SEWER	525 LDS	GAS	50 GAS	300 LDS	LAND DRAINAGE SEWER
375 WWS	WASTEWATER SEWER	375 WWS	SURVEY BAR	250 WWS	250 WWS	WASTEWATER SEWER
○	MANHOLE	●	FENCE	⊖	⊖	PROFILE
□	CATCH BASIN	■	POLE - HYDRO, MTS	⊕	⊕	GROUND ABOVE PIPE
▽	CURB INLET	▽	CURB STOP	⊕	⊕	
⊕	JUNCTIONS	⊕	GUY ANCHOR			
⊕	CULVERT	⊕	LIGHT STANDARD			
⊕	ANODE	⊕	TREE			
EXISTING	LEGEND-PLAN	PROPOSED	EXISTING	LEGEND-PLAN	PROPOSED	EXISTING
				LEGEND-PROFILE	PROPOSED	

LOCATION APPROVED UNDERGROUND STRUCTURES

SUPV. U/G STRUCTURES COMMITTEE DATE

NOTE: LOCATION OF UNDERGROUND STRUCTURES AS SHOWN ARE BASED ON THE BEST INFORMATION AVAILABLE BUT NO GUARANTEE IS GIVEN THAT ALL EXISTING UTILITIES ARE SHOWN OR THAT THE GIVEN LOCATIONS ARE EXACT. CONFIRMATION OF EXISTENCE AND EXACT LOCATION OF ALL SERVICES MUST BE OBTAINED FROM THE INDIVIDUAL UTILITIES BEFORE PROCEEDING WITH CONSTRUCTION.

B.M. ELEV. FIELD BOOK #:

POSTED TO LBS:

NO. REVISIONS DATE BY

CITY OF WINNIPEG WATER AND WASTE ENGINEERING DIVISION

DESIGNED BY SC CHECKED BY TW

DRAWN BY C.J.H. APPROVED BY K.Z.

HOR. SCALE 1:250 VERTICAL 1:50

RELEASED FOR CONSTRUCTION

DATE 2007 07 19

ENGINEER'S SEAL

ORIGINAL SIGNED BY S.R.J. COURNOYER 07/07/23

BD OPPORTUNITY: 529-2007
FILENAME: 06118_19.dwg
PLOT DATE: 2007 07 19

THE CITY OF WINNIPEG WATER AND WASTE DEPARTMENT

2007 SEWER RENEWALS BY CIPP LINING CONTRACT 21

PINEWOOD DRIVE
1ST MH E OF MORAY STREET TO 3RD MH E OF MORAY STREET

SHEET 17 OF 25
CITY DRAWING NUMBER 06119

WARNING

IF POWER EQUIPMENT OR EXPLOSIVES ARE TO BE USED FOR EXCAVATION ON THIS PROJECT THE CONTRACTOR MUST:

- 1) NOTIFY THE GAS COMPANY OF THE PROPOSED LOCATION OF EXCAVATION.
- 2) TAKE PRECAUTION TO AVOID DAMAGE TO GAS COMPANY INSTALLATIONS.

SEE PROVINCIAL REGULATION 210/72 FOR DETAILS