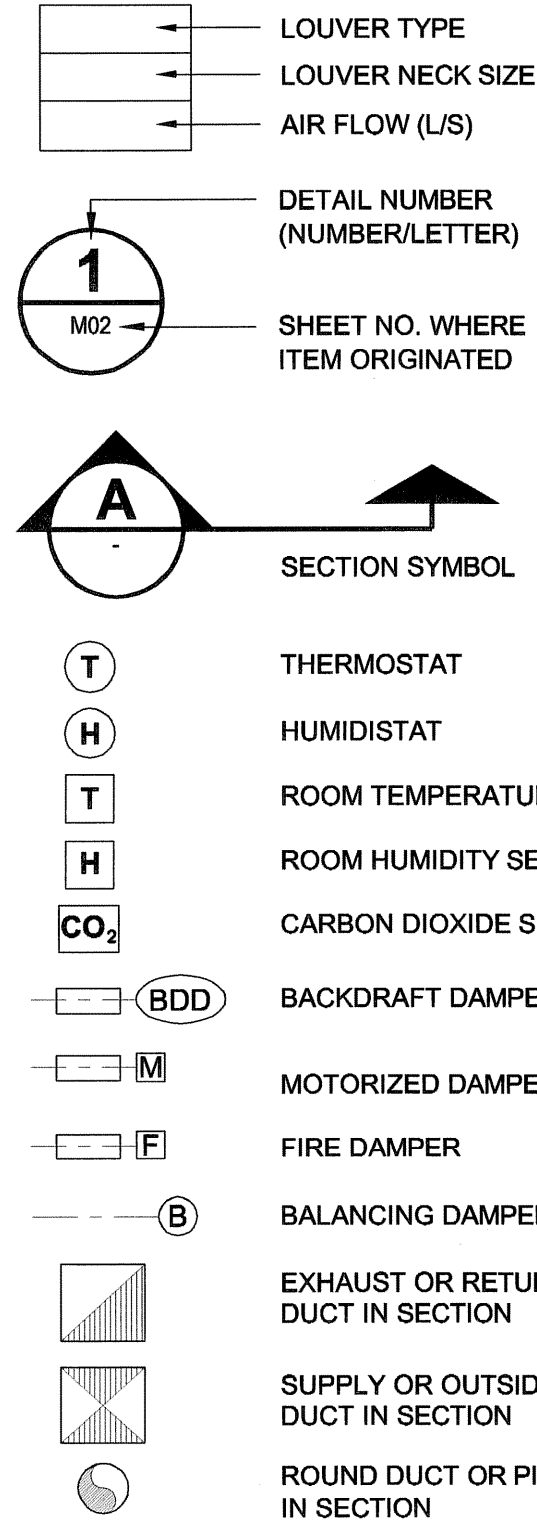
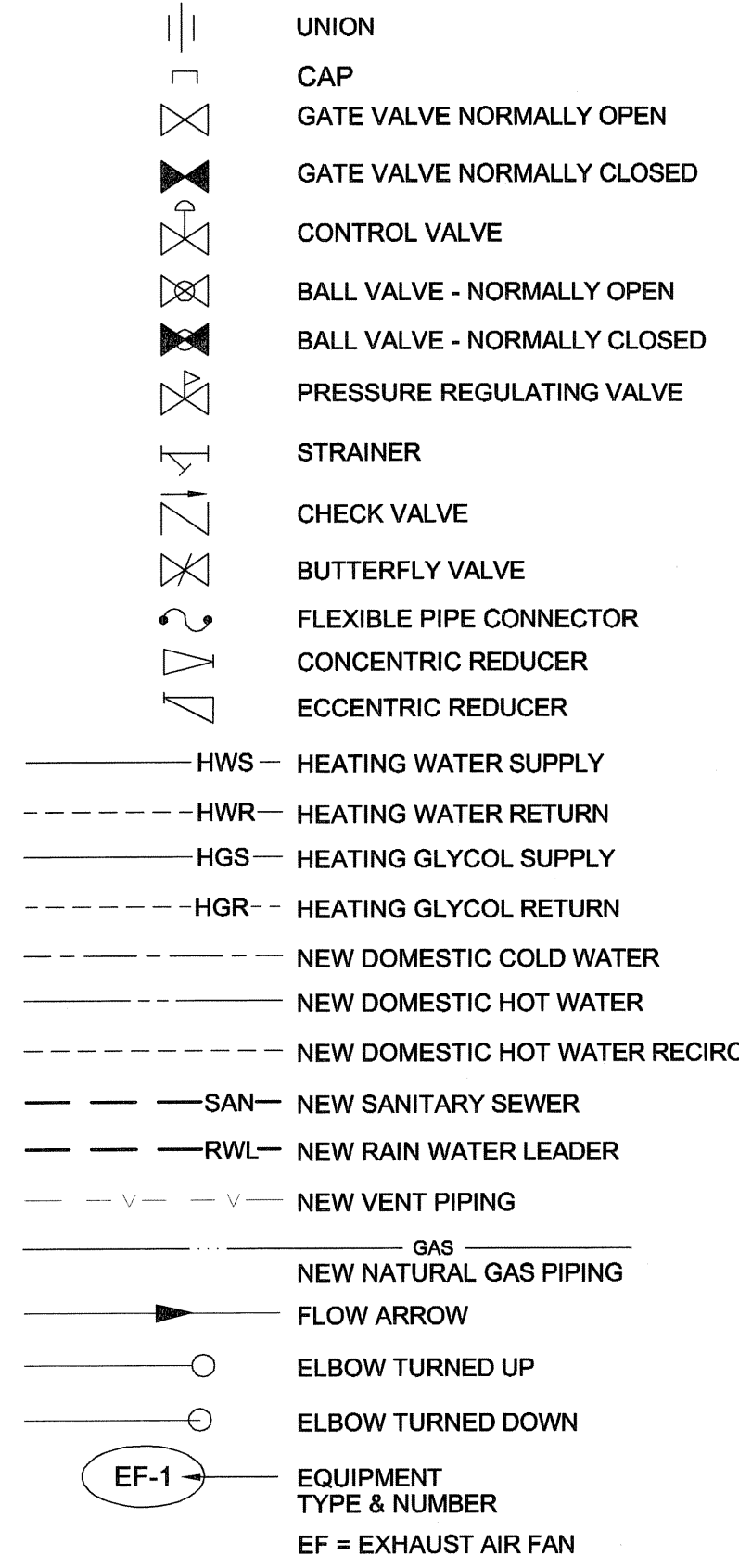
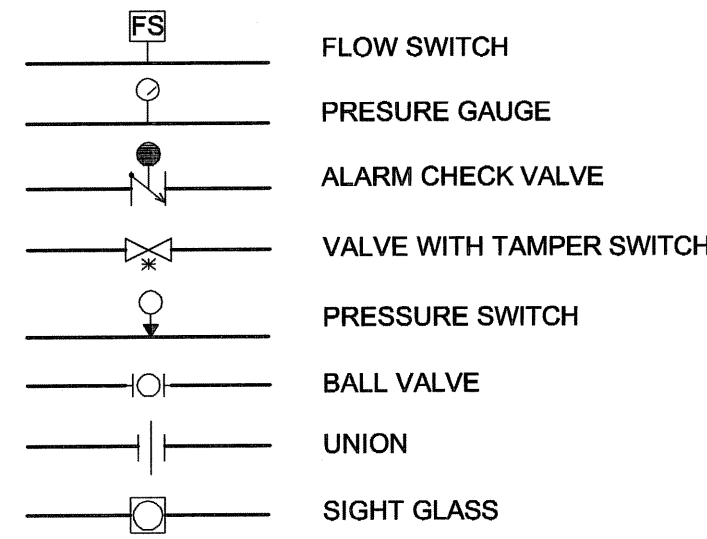


SYMBOL LEGEND - HVAC - PLUMBING



SYMBOL LEGEND - FIRE PROTECTION



GENERAL NOTES:

- DIMENSIONS AND BUILDING ORIENTATION SHOWN ON THE DRAWING ARE APPROXIMATE. THE CONTRACTOR IS RESPONSIBLE TO VERIFY EQUIPMENT/BUILDING LOCATIONS AND DIMENSIONS ON SITE.
- PATCH ALL OPENINGS REMAINING AFTER EQUIPMENT, DUCT, OR PIPING INSTALLATION/REMOVALS. PATCHING TO ACHIEVE COLOUR MATCHED FINISH OF LIKE MATERIALS TO THE SURROUNDING SURFACE MATERIAL.
- CUT ALL NEW OPENINGS REQUIRED FOR NEW INSTALLATIONS OR DEMOLITION WORK USING DUE CARE AND APPROPRIATE TOOLS AND METHODS TO MAINTAIN THE INTEGRITY OF THE STRUCTURE/ASSEMBLY IN WHICH THE OPENING IS BEING CUT. MECHANICAL CONTRACTOR SHALL SUPPLY GALVANIZED STEEL SHEET METAL AND SLEEVES FOR EQUIPMENT PENETRATING THE WALL.
- ELECTRICALLY ISOLATE ALL DISSIMILAR METALS.
- PROVIDE ADDITIONAL FRAMING AT ALL WALL PENETRATIONS.
- PERFORM ALL WORK IN CO-ORDINATION WITH ALL OTHER TRADES AND CONTRACTORS. PROVIDE COMPLETE FUNCTIONAL AND CODE COMPLIANT SYSTEMS.
- CONTRACTOR IS RESPONSIBLE FOR TAKING OUT PERMITS AND PAYING ALL FEES RELATED TO DEMOLITION/MODIFICATION OF THE EXISTING MECHANICAL, TANK AND FUEL SYSTEMS, CONSTRUCTION, MODIFICATION AND INSTALLATION OF NEW SYSTEMS.
- DEMOLITION/MODIFICATION/DISPOSAL/INSTALLATION OF MECHANICAL WHICH INVOLVE NATURAL GAS PIPING AND EQUIPMENT SHALL BE CONDUCTED IN ACCORDANCE WITH THE MANITOBA FIRE CODE, REGULATIONS, INDUSTRY STANDARDS AND LOCAL BYLAWS.
- USE SKILLED AND LICENSED LABOURERS AND JOURNEYMEN TO PERFORM ALL WORK.
- ALL WASTE IS TO BE DISPOSED OFF SITE IN AN APPROVED FACILITY LICENSED TO ACCEPT SUCH WASTE.
- CONTRACTOR IS RESPONSIBLE TO REMOVE ANY CONTAMINATED OR HAZARDOUS WASTE/REFUSE, WHICH IS CAUSED BY THIS CONSTRUCTION WORK, AND TO DISPOSE THEM OFF SITE AS PER CODE.
- CONTRACTOR TO PROVIDE PROTECTION TO OWNER EQUIPMENT DURING CONSTRUCTION. WORK WITH EXTREME CARE AROUND OPERATING EQUIPMENT.
- COORDINATE THE TIMING, DURATION AND SAFETY REQUIREMENTS FOR SHUT-DOWNS TO ALLOW PIPING TIE-INS AND WORK IN HAZARDOUS ATMOSPHERE WITH THE CITY OF WINNIPEG PLANNING, PROPERTY & DEVELOPMENT DEPARTMENT.

DESIGN CONDITIONS:

35 kPa (5 PSIG) GAS SERVICE: TOTAL = 4400 kW (15.0 MMBH)
 NORTH MECH ROOM 1175 kW (4.0 MMBH)
 SOUTH MECH ROOM 1175 kW (4.0 MMBH)
 ROOF TOP 880 kW (3.0 MMBH)
 FUTURE 440 kW (1.5 MMBH)
 GARAGE AREA 730 kW (2.5 MMBH)

AHU: SIZED FOR COOLING & VENTILATION HEATING
 PERIMETER HEATING: SIZED FOR 100% OF ENVELOPE LOSSES

UMA | AECOM
 © 2007 UMA ENGINEERING LTD. ALL RIGHTS RESERVED.

APEGM
 Certificate of Authorization
 UMA Engineering Ltd. (MB)
 No. 256 Date: 07/07/23

DRN	CHK	DES	ENG	IDR
UMA AECOM REVIEW				

0	ISSUED FOR TENDER	RJP	07/07/23
NO.	REVISION/DESCRIPTION	BY	DATE

SEALS

PROVINCE OF MANITOBA
 July 20, 2007
 B.M. DEVERSON
 REGISTERED PROFESSIONAL ENGINEER

DRAWN BY: RJP
 CHECKED BY: USER
 APPROVED: APPROVAL
 DATE: 2007.07.17

CITY OF WINNIPEG
 PLANNING, PROPERTY & DEVELOPMENT DEPARTMENT
 CIVIC ACCOMMODATIONS DIVISION
 300 - 65 GARRY ST. R3C 4K4

PROJECT
 Construction of Cindy Klassen
 Recreation Complex Facility
 Enhancement Project
 999 Sargent St. Winnipeg, Manitoba

SHEET TITLE
 Mechanical
 General Notes, Legend, Design Conditions

SCALE NTS	PROJECT NO. 2005-059	SHEET NO. MO.1
--------------	-------------------------	-------------------

DRAWING SHEET SIZE: A1 (841mm x 594mm) PLOT 1:1