

- NOTES:**
1. BASELINE = BACK OF PROPOSED CURB LINE LOCATED 3.50 m SOUTH OF WESTBOUND MEDIAN BACK OF CURB. STA 1+001.8 = NORTHWEST PROPERTY LINE OF BISHOP GRANDIN BLVD. & ST. ANNE'S ROAD
 2. PREFORMED VEHICLE DETECTOR LOOP TO BE INSTALLED (BY OTHERS) PRIOR TO CONCRETE PAVEMENT CONSTRUCTION.

BENCH MARK
 In median of Bishop Grandin Blvd. @ St. Anne's Rd., Tblt. 1.7 m E. of E.L. of St. Anne's Rd. produced from the N. & 1.6 m N. of C.L. of median of Bishop Grandin Blvd. produced from the E.

150 mm W.M.	WATER MAIN	150 mm W.M.	HYDRO	150 mm W.M.	WATER MAIN	150 mm W.M.
⊕	HYDRANT VALVE	⊕	M.T.S.	⊕	HYDRANT VALVE	⊕
⊗	LAND DRAINAGE SEWER	⊗	CONCRETE	⊗	LAND DRAINAGE SEWER	⊗
⊙	WASTE WATER SEWER	⊙	ASPHALT	⊙	WASTE WATER SEWER	⊙
○	MANHOLE	○	PLANING	○	MANHOLE	○
□	CATCH BASIN	□	PAVING STONES	□	CATCH BASIN	□
▽	CURB INLET	▽	PARTIAL DEPTH REPAIR	▽	CURB INLET	▽
⊞	JUNCTIONS	⊞	PROPERTY LINE	⊞	JUNCTIONS	⊞
⊞	CULVERT	⊞	SURVEY BAR	⊞	CULVERT	⊞
⊞	GAS	⊞	PARAPLEGIC RAMP	⊞	GAS	⊞
---	EXISTING	---	EXISTING	---	EXISTING	---
---	LEGEND-PLAN	---	PROPOSED	---	LEGEND-PROFILE	---

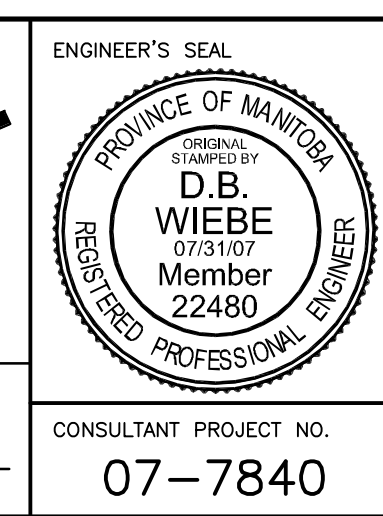
UNDERGROUND STRUCTURES

SUPPLY U/G STRUCTURES COMMITTEE DATE

NOTE:
 LOCATION OF UNDERGROUND STRUCTURES AS SHOWN ARE BASED ON THE BEST INFORMATION AVAILABLE. BUT NO GUARANTEE IS GIVEN THAT ALL EXISTING UTILITIES ARE SHOWN OR THAT THE GIVEN LOCATIONS ARE EXACT. CONFIRMATION OF EXISTENCE AND EXACT LOCATION OF ALL SERVICES MUST BE OBTAINED FROM THE INDIVIDUAL UTILITIES BEFORE PROCEEDING WITH CONSTRUCTION.

B.M. ELEV.	62-033	232.164
4	ISSUED FOR TENDER	07-31-07 D.B.W.
3	ISSUED FOR REVIEW	07-20-07 D.B.W.
2	ISSUED FOR REVIEW	06-28-07 D.B.W.
1	ISSUED FOR REVIEW	06-20-07 D.B.W.
NO.	REVISIONS	DATE BY

DESIGNED BY	R.T.P.
DRAWN BY	P.M.W./A.J.P.
CHECKED BY	D.B.W.
APPROVED BY	
HOR. SCALE	1:250
VERTICAL	1:10
DATE	JUNE 15 / 2007



THE CITY OF WINNIPEG
 TRANSIT DEPARTMENT

ON STREET TRANSIT
 PRIORITY IMPROVEMENTS - PHASE 1

ST ANNE'S CORRIDOR
 ST ANNE'S RD @ BISHOP GRANDIN BLVD

CITY DRAWING NUMBER
 SHEET 9 OF 14

CONSULTANT PROJECT NO.
 07-7840