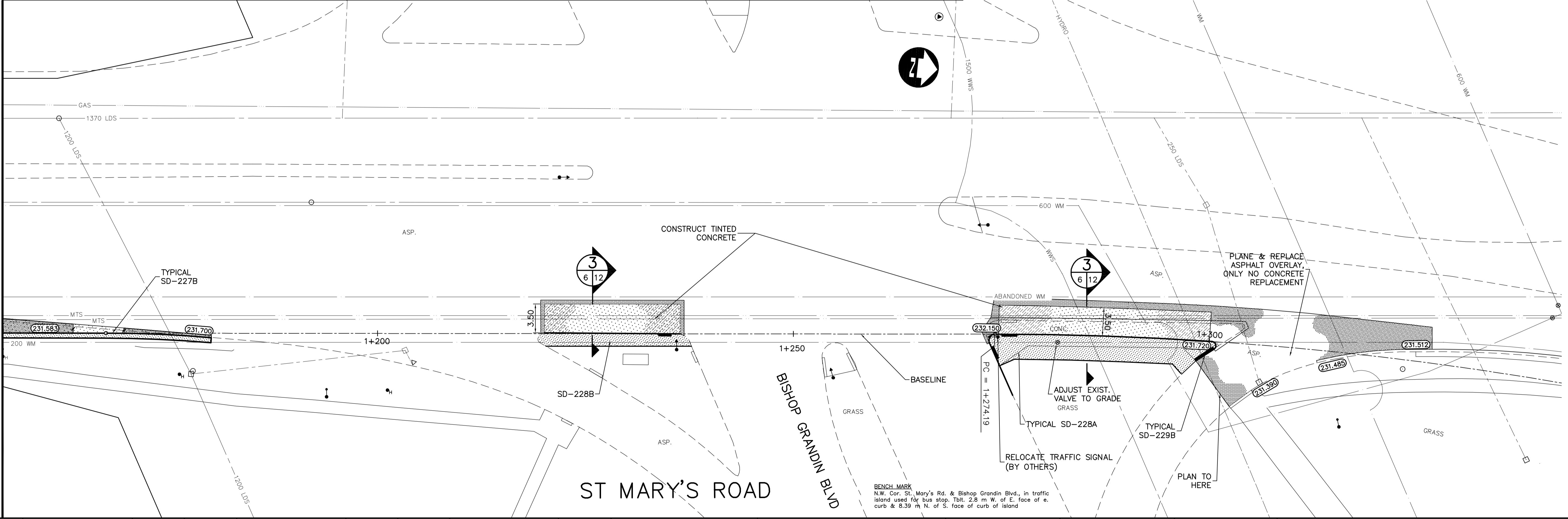


- NOTES:**
1. PREFORMED VEHICLE DETECTOR LOOP TO BE INSTALLED (BY OTHERS) PRIOR TO CONCRETE PAVEMENT CONSTRUCTION.

MATCH LINE



150 mm W.M.	WATER MAIN	150 mm W.M.	HYDRO M.T.S.	150 mm W.M.	WATER MAIN	150 mm W.M.	HYDRANT VALVE
300 mm L.D.S.	LAND DRAINAGE SEWER	300 mm L.D.S.	CONCRETE	300 mm L.D.S.	LAND DRAINAGE SEWER	300 mm L.D.S.	CONCRETE
250 mm W.W.S.	WASTE WATER SEWER	250 mm W.W.S.	ASPHALT	250 mm W.W.S.	WASTE WATER SEWER	250 mm W.W.S.	ASPHALT
○	MANHOLE	○	PLANING	○	MANHOLE	○	PLANING
□	CATCH BASIN	□	SIDEWALK	□	CATCH BASIN	□	SIDEWALK
▽	CURB INLET	▽	PAVING STONES	▽	CURB INLET	▽	PAVING STONES
+	JUNCTIONS	+	PARTIAL DEPTH REPAIR	+	JUNCTIONS	+	PARTIAL DEPTH REPAIR
—	CULVERT	—	PROPERTY LINE	—	CULVERT	—	PROPERTY LINE
—	GAS	—	SURVEY BAR	—	GAS	—	SURVEY BAR
—	LEGEND—PLAN	—	PARAPLEGIC RAMP	—	LEGEND—PLAN	—	PARAPLEGIC RAMP
—	LEGEND—PROFILE	—	PROPOSED	—	LEGEND—PROFILE	—	PROPOSED

**UNDERGROUND STRUCTURES**

SUPPLY U/G STRUCTURES COMMITTEE DATE

**NOTE:**  
LOCATION OF UNDERGROUND STRUCTURES AS SHOWN ARE BASED ON THE BEST INFORMATION AVAILABLE. BUT NO GUARANTEE IS GIVEN THAT ALL EXISTING UTILITIES ARE SHOWN OR THAT THE GIVEN LOCATIONS ARE EXACT. CONFIRMATION OF EXISTENCE AND EXACT LOCATION OF ALL SERVICES MUST BE OBTAINED FROM THE INDIVIDUAL UTILITIES BEFORE PROCEEDING WITH CONSTRUCTION.

B.M. ELEV.	63-026	232.364
DESIGNED BY	R.T.P.	
DRAWN BY	P.M.W./A.J.P.	
CHECKED BY	D.B.W.	
APPROVED BY		
HOR. SCALE	1:250	
VERTICAL	1:10	
RELEASED FOR CONSTRUCTION	DATE	
NO.	REVISIONS	DATE BY
4	ISSUED FOR TENDER	07-31-07 D.B.W.
3	ISSUED FOR REVIEW	07-20-07 D.B.W.
2	ISSUED FOR REVIEW	06-28-07 D.B.W.
1	ISSUED FOR REVIEW	06-20-07 D.B.W.

DESIGNED BY R.T.P.

DRAWN BY P.M.W./A.J.P.

CHECKED BY D.B.W.

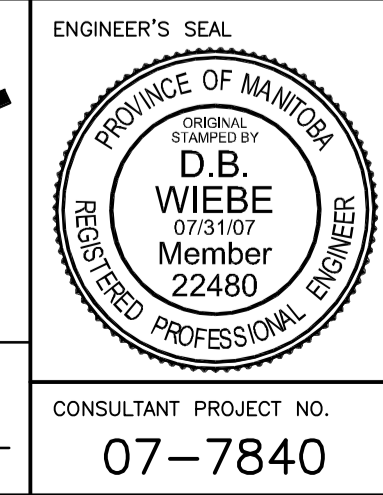
APPROVED BY

HOR. SCALE 1:250

VERTICAL 1:10

RELEASED FOR CONSTRUCTION

DATE



**THE CITY OF WINNIPEG**  
TRANSIT DEPARTMENT

ON STREET TRANSIT  
PRIORITY IMPROVEMENTS - PHASE 1

ST MARY'S CORRIDOR  
ST MARY'S RD @ BISHOP GRANDIN BLVD

CITY DRAWING NUMBER  
SHEET 6 OF 14

CONSULTANT PROJECT NO.  
07-7840