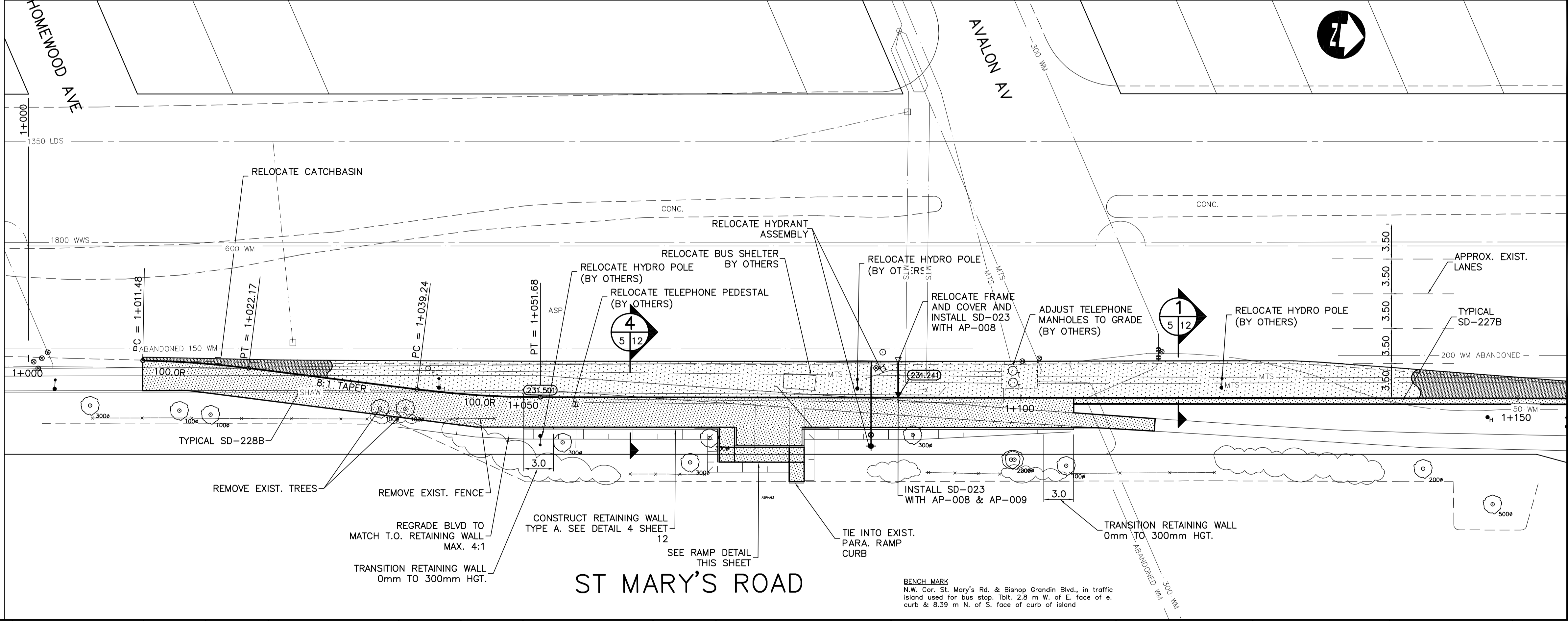


RAMP DETAIL
SCALE 1:100



MATCH LINE

ST MARY'S ROAD

BENCH MARK
N.W. Cor. St. Mary's Rd. & Bishop Grandin Blvd., in traffic island used for bus stop. Hgt. 2.8 m W. of E. face of e. curb & 8.39 m N. of S. face of curb of island



150 mm W.M.	WATER MAIN	150 mm W.M.	HYDRO	150 mm W.M.	WATER MAIN	150 mm W.M.
Hydrant Valve	Hydrant Valve	M.T.S.	Hydrant Valve	Hydrant Valve	Hydrant Valve	Hydrant Valve
300 mm L.D.S.	LAND DRAINAGE SEWER	300 mm L.D.S.	CONCRETE	300 mm L.D.S.	LAND DRAINAGE SEWER	300 mm L.D.S.
250 mm W.W.S.	WASTE WATER SEWER	250 mm W.W.S.	ASPHALT	250 mm W.W.S.	WASTE WATER SEWER	250 mm W.W.S.
Manhole	Manhole	Planing	Planing	Manhole	Manhole	Manhole
Catch Basin	Catch Basin	Sidewalk	Sidewalk	Catch Basin	Catch Basin	Catch Basin
Curb Inlet	Curb Inlet	Paving Stones	Paving Stones	Curb Inlet	Curb Inlet	Curb Inlet
Junctions	Junctions	Partial Depth Repair	Partial Depth Repair	Junctions	Junctions	Junctions
Culvert	Culvert	Property Line	Property Line	Culvert	Culvert	Culvert
Gas	Gas	Survey Bar	Survey Bar	Gas	Gas	Gas
Existing	Legend-Plan	Proposed	Legend-Plan	Proposed	Legend-Profile	Proposed

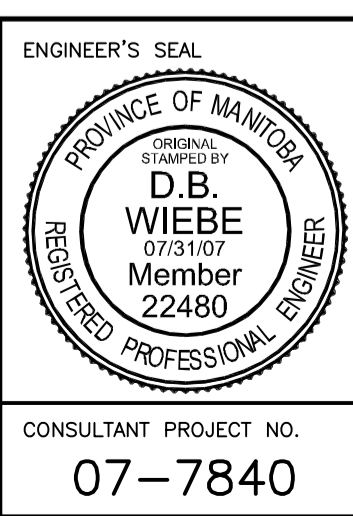
UNDERGROUND STRUCTURES

SUPPLY, U/G STRUCTURES COMMITTEE DATE

NOTE:
LOCATION OF UNDERGROUND STRUCTURES AS SHOWN ARE BASED ON THE BEST INFORMATION AVAILABLE. BUT NO GUARANTEE IS GIVEN THAT ALL EXISTING UTILITIES ARE SHOWN OR THAT THE GIVEN LOCATIONS ARE EXACT. CONFIRMATION OF EXISTENCE AND EXACT LOCATION OF ALL SERVICES MUST BE OBTAINED FROM THE INDIVIDUAL UTILITIES BEFORE PROCEEDING WITH CONSTRUCTION.

B.M. ELEV.	63-026 232.364
DESIGNED BY	R.T.P.
DRAWN BY	P.M.W./A.J.P.
CHECKED BY	D.B.W.
APPROVED BY	
HOR. SCALE	1:250
VERTICAL	1:10
RELEASED FOR CONSTRUCTION	
DATE	JUNE 15 / 2007

NO.	REVISIONS	DATE	BY
4	ISSUED FOR TENDER	07-31-07	D.B.W.
3	ISSUED FOR REVIEW	07-20-07	D.B.W.
2	ISSUED FOR REVIEW	06-28-07	D.B.W.
1	ISSUED FOR REVIEW	06-20-07	D.B.W.



THE CITY OF WINNIPEG
TRANSIT DEPARTMENT

ON STREET TRANSIT PRIORITY IMPROVEMENTS - PHASE 1

ST MARY'S CORRIDOR
ST MARY'S RD @ BISHOP GRANDIN BLVD

CITY DRAWING NUMBER
SHEET 5 OF 14

CONSULTANT PROJECT NO.
07-7840