

- NOTES:**
1. BASELINE = CHAINAGE CONTROL LINE (CTL) AS SHOWN ON DRAWING. STA 1+100 = 30.37 m EAST OF NORTHWEST CORNER OF EARL'S RESTAURANT PROPERTY.
 2. JOINT CONCRETE PAVEMENT AS DIRECTED BY CONTRACT ADMINISTRATOR.
 3. CONCRETE PAVEMENT TO BE TINTED RED TO LIMITS SHOWN.
 4. CLEAR AND GRUB TREES AS DIRECTED BY CONTRACT ADMINISTRATOR.
 5. CONTRACTOR TO REVIEW AND COMPLY WITH OPERATING CONSTRAINTS FOR WORK WITHIN 5 m OF CENTERLINE OF THE 750 FEEDERMAIN DETAILED IN BID OPPORTUNITY SPECIFICATIONS.
 6. CONTRACTOR TO REVIEW LOADING LIMIT OVER THE 750 mm FEEDERMAIN IN APPENDIX A OF THE BID OPPORTUNITY SPECIFICATIONS.

150 mm W.M.	WATER MAIN	150 mm W.M.	HYDRO	150 mm W.M.	WATER MAIN	150 mm W.M.
300 mm L.D.S.	LAND DRAINAGE SEWER	300 mm L.D.S.	M.T.S.	300 mm L.D.S.	LAND DRAINAGE SEWER	300 mm L.D.S.
250 mm W.W.S.	WASTE WATER SEWER	250 mm W.W.S.	CONCRETE	250 mm W.W.S.	WASTE WATER SEWER	250 mm W.W.S.
MANHOLE	MANHOLE	MANHOLE	ASPHALT	MANHOLE	MANHOLE	MANHOLE
CATCH BASIN	CATCH BASIN	CATCH BASIN	PLANING	CATCH BASIN	CATCH BASIN	CATCH BASIN
CURB INLET	CURB INLET	CURB INLET	SIDEWALK	CURB INLET	CURB INLET	CURB INLET
JUNCTIONS	JUNCTIONS	JUNCTIONS	PAVING STONES	JUNCTIONS	JUNCTIONS	JUNCTIONS
CULVERT	CULVERT	CULVERT	PARTIAL DEPTH REPAIR	CULVERT	CULVERT	CULVERT
GAS	GAS	GAS	PROPERTY LINE	GAS	GAS	GAS
EXISTING	LEGEND-PLAN	PROPOSED	SURVEY BAR	EXISTING	LEGEND-PROFILE	PROPOSED
			PARAPLEGIC RAMP			

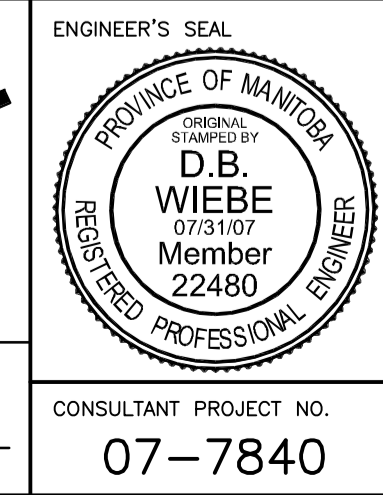
UNDERGROUND STRUCTURES

SUPPLY, U/G STRUCTURES COMMITTEE DATE

NOTE:
LOCATION OF UNDERGROUND STRUCTURES AS SHOWN ARE BASED ON THE BEST INFORMATION AVAILABLE. BUT NO GUARANTEE IS GIVEN THAT ALL EXISTING UTILITIES ARE SHOWN OR THAT THE GIVEN LOCATIONS ARE EXACT. CONFIRMATION OF EXISTENCE AND EXACT LOCATION OF ALL SERVICES MUST BE OBTAINED FROM THE INDIVIDUAL UTILITIES BEFORE PROCEEDING WITH CONSTRUCTION.

B.M. ELEV.	76-074 233.165
NO.	REVISIONS
4	ISSUED FOR TENDER 07-31-07 D.B.W.
3	ISSUED FOR REVIEW 07-20-07 D.B.W.
2	ISSUED FOR REVIEW 06-28-07 D.B.W.
1	ISSUED FOR REVIEW 06-20-07 D.B.W.

DESIGNED BY	R.T.P.
DRAWN BY	P.M.W./A.J.P.
CHECKED BY	D.B.W.
APPROVED BY	
HOR. SCALE	1:250
VERTICAL	1:10
DATE	JUNE 15 / 2007



THE CITY OF WINNIPEG
TRANSIT DEPARTMENT

ON STREET TRANSIT
PRIORITY IMPROVEMENTS - PHASE 1

PEMBINA CORRIDOR
PEMBINA HWY @
BISHOP GRANDIN BLVD E/B OFF RAMP

CITY DRAWING NUMBER
SHEET 2 OF 14

CONSULTANT PROJECT NO.
07-7840

RELEASED FOR CONSTRUCTION