

JOIN A-A

JOIN A-A

WARNING
 IF POWER EQUIPMENT OR EMPLOYEES ARE TO BE USED FOR EXCAVATION ON THIS PROJECT THE CONTRACTOR MUST:
 1) OBTAIN CLEARANCE FROM THE GAS UTILITY PRIOR TO EXCAVATION.
 2) TAKE PRECAUTION TO AVOID DAMAGE TO GAS UTILITY INSTALLATIONS.
 SEE PROVINCIAL REGULATION 210/72 FOR DETAILS

CONSTRUCTION NOTES
 1) CURB REPLACEMENT AS DIRECTED BY THE CONTRACT ADMINISTRATOR.
 2) ALL STREET RADIUS CURBS UNDER 15M RADIUS SHALL BE REPLACED AS MODIFIED OR AS DIRECTED BY THE CONTRACT ADMINISTRATOR.
 3) PAVEMENT REPAIRS SHOWN ARE ONLY A REPRESENTATIVE SAMPLE OF THE TENDERED QUANTITIES.
 4) ASPHALT TIE-INS TO BE DETERMINED IN THE FIELD BY THE CONTRACT ADMINISTRATOR.
 5) SIDEWALK REPLACEMENT AS DIRECTED BY THE CONTRACT ADMINISTRATOR.
 6) BOULEVARD REPLACEMENT AS DIRECTED BY THE CONTRACT ADMINISTRATOR.

METRIC
 WHOLE NUMBERS INDICATE MILLIMETERS
 DECIMAL NUMBERS INDICATE METERS

BID OPPORTUNITY NO. 491-2007

150 MM WATERMAIN HYDRANT	150 MM VALVE	HYDRO MTS	150 MM WATERMAIN SEWER
300 LBS LAND DRAINAGE SEWER	300 LBS COMBINED SEWER	CONCRETE SIDEWALK	300 LBS WATERMAIN SEWER
250 CS MANHOLE	250 CS MANHOLE	LIMIT OF ASPHALT	
CATCH BASIN	CATCH BASIN	CURB RENEWAL	
CURB INLET	CURB INLET	ASPHALT	
WOOD POLES	WOOD POLES	ELEVATIONS	
LAMP STANDARD	LAMP STANDARD	PROPERTY LINE	
GAS	GAS	SURVEY BAR	
		CURB STOP	
		RAMP CURB	

LOCATION APPROVED UNDERGROUND STRUCTURES

DATE: _____

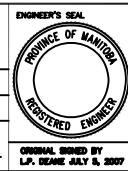
NOTE:
 LOCATION OF UNDERGROUND STRUCTURES AS SHOWN ARE BASED ON THE BEST INFORMATION AVAILABLE, BUT NO GUARANTEE IS GIVEN THAT ALL EXISTING UTILITIES ARE SHOWN OR THAT THE SHOWN LOCATIONS ARE EXACT. CONFIRMATION OF DISTANCE AND EXACT LOCATION OF ALL SERVICES MUST BE OBTAINED FROM THE INDIVIDUAL UTILITIES BEFORE PROCEEDING WITH CONSTRUCTION.

**ENGINEERING DIVISION
 TECHNOLOGY SERVICES BRANCH
 106 - 1155 PACIFIC AVE**

DESIGNED BY: G.C. CHECKED BY: D.J.K.
 DRAWN BY: G.C. APPROVED BY: K.T.

HOR. SCALE: 1 : 250
 VERTICAL: 1 : 10

DATE: 2007/06/14



THE CITY OF WINNIPEG
 PUBLIC WORKS DEPARTMENT

ARCHIBALD STREET E. SIDE
 FROM DENISET ST TO PROSPER ST
 CONSTRUCTION OF NEW CONCRETE SIDEWALK

CITY DRAWING NUMBER: SE-07-40
 SHEET 1 OF 1

1