

- CONSTRUCTION NOTES**
- 1) CURB REPLACEMENT AS DIRECTED BY THE CONTRACT ADMINISTRATOR
  - 2) ALL STREET RADIUS CURB UNDER 15M RADIUS SHALL BE REPLACED AS MODIFIED OR AS DIRECTED BY THE CONTRACT ADMINISTRATOR
  - 3) PAVEMENT REPAIRS SHOWN ARE ONLY A REPRESENTATIVE SAMPLE OF THE TENDERED QUANTITIES
  - 4) ASPHALT TIE-INS TO BE DETERMINED IN THE FIELD BY THE CONTRACT ADMINISTRATOR.
  - 5) SIDEWALK REPLACEMENT AS DIRECTED BY THE CONTRACT ADMINISTRATOR.
  - 6) BOULEVARD REPLACEMENT AS DIRECTED BY THE CONTRACT ADMINISTRATOR.

**WARNING**

IF POWER EQUIPMENT OR EXPLOSIVES ARE TO BE USED FOR EXCAVATION ON THIS PROJECT THE CONTRACTOR MUST:

- 1) OBTAIN CLEARANCE FROM THE GAS UTILITY PRIOR TO EXCAVATION.
- 2) TAKE PRECAUTION TO AVOID DAMAGE TO GAS UTILITY INSTALLATIONS.

SEE PROVINCIAL REGULATION 210/72 FOR DETAILS

BID OPPORTUNITY NO. 491-2007

150 MM	WATERMAIN	150 MM	HYDRO	150 MM	WATERMAIN	150 MM	WATERMAIN
○	HYDRANT	○	MTS	○	SEWER	○	SEWER
●	VALVE	●	CONCRETE	●		●	
○	LAND DRAINAGE SEWER	○	LIMIT OF ASPHALT	○		○	
○	COMBINED SEWER	○	CURB RENEWAL	○		○	
○	MANHOLE	○	ASPHALT	○		○	
○	CATCH BASIN	○	ELEVATIONS	○		○	
○	CURB INLET	○	PROPERTY LINE	○		○	
○	WOOD POLES	○	SURVEY BAR	○		○	
○	LAMP STANDARD	○	CURB STOP	○		○	
○	GAS	○	RAMP CURB	○		○	
EXISTING	LEGEND - PLAN	PROPOSED	EXISTING	LEGEND - PLAN	PROPOSED	EXISTING	LEGEND - PROFILE

**LOCATION APPROVED UNDERGROUND STRUCTURES**

NO. REVISIONS      DATE      BY

**NOTE:**  
LOCATION OF UNDERGROUND STRUCTURES AS SHOWN ARE BASED ON THE BEST INFORMATION AVAILABLE. BUT NO GUARANTEE IS GIVEN THAT ALL EXISTING UTILITIES ARE SHOWN OR THAT THE GIVEN LOCATIONS ARE EXACT. CONFIRMATION OF EXISTENCE AND EXACT LOCATION OF ALL SERVICES MUST BE OBTAINED FROM THE INDIVIDUAL UTILITIES BEFORE PROCEEDING WITH CONSTRUCTION.

NO.	REVISIONS	DATE	BY

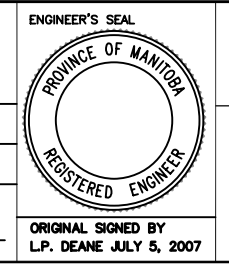
**TRANSPORTATION ENGINEERING DIVISION  
TECHNOLOGY SERVICES BRANCH  
106 - 1155 PACIFIC AVE**

DESIGNED BY: R.W. / G.C.      CHECKED BY: D.K.

DRAWN BY: R.W. / D.T. / G.C.      APPROVED BY: K.T.

SCALE: 1 : 100

DATE: 2007/05/14



**THE CITY OF WINNIPEG  
PUBLIC WORKS DEPARTMENT**

**SMITH STREET  
AT  
NOTRE DAME AVENUE  
ROADWAY IMPROVEMENTS**

CITY DRAWING NUMBER: SE-07-36  
SHEET 1 OF 1

1